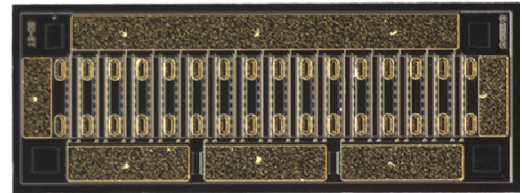


CG2H80045D

45 W, 8.0 GHz, GaN HEMT Die

Description

WolfSpeed's CG2H80045D is a gallium nitride (GaN) High Electron Mobility Transistor (HEMT). GaN has superior properties compared to silicon or gallium arsenide, including higher breakdown voltage, higher saturated electron drift velocity, and higher thermal conductivity. GaN HEMTs offer greater power density and wider bandwidths compared to Si and GaAs transistors



PNs: CG2H80045D

Features

- 15 dB Typical Small Signal Gain at 4 GHz
- 12 dB Typical Small Signal Gain at 8 GHz
- 45 W Typical P_{SAT}
- 28 V Operation
- High Breakdown Voltage
- High Temperature Operation
- Up to 8 GHz Operation
- High Efficiency

Applications

- 2-Way Private Radio
- Broadband Amplifiers
- Cellular Infrastructure
- Test Instrumentation
- Class A, AB, Linear amplifiers suitable for OFDM, W-CDMA, EDGE, CDMA waveforms

Packaging Information



- Bare die are shipped in Gel-Pak® containers
- Non-adhesive tacky membrane immobilizes die during shipment

 Large Signal Models Available for ADS and MWO





Absolute Maximum Ratings (not simultaneous) at 25°C Case Temperature

Parameter	Symbol	Rating	Units	Conditions
Drain-Source Voltage	V_{DSS}	120	V	25°C
Gate-to-Source Voltage	V_{GS}	-10, +2		
Storage Temperature	T_{STG}	-65, +150	°C	
Operating Junction Temperature	T_J	225		
Maximum Forward Gate Current	I_{GMAX}	12	mA	25°C
Maximum Drain Current ¹	I_{DMAX}	4.5	A	
Thermal Resistance, Junction to Case (packaged) ²	$R_{\theta JC}$	3.4	°C/W	85°C
Thermal Resistance, Junction to Case (die only)		2.1		
Mounting Temperature (30 seconds)	T_s	320	°C	30 seconds

Notes:

¹ Current limit for long term, reliable operation

² Eutectic die attach using 80/20 AuSn mounted to a 60 mil thick CuMoCu carrier

Electrical Characteristics (Frequency = 4 GHz unless otherwise stated; $T_c = 25^\circ\text{C}$)

Characteristics	Symbol	Min.	Typ.	Max.	Units	Conditions
DC Characteristics						
Gate Threshold Voltage	$V_{GS(th)}$	-3.8	-3.1	-2.3	V _{DC}	$V_{DS} = 10\text{ V}, I_D = 10.8\text{ mA}$
Gate Quiescent Voltage	$V_{GS(Q)}$	—	-2.7	—		$V_{DD} = 28\text{ V}, I_{DQ} = 500\text{ mA}$
Drain Current	I_{DSS}	7.8	10.8	—	A	$V_{DS} = 6\text{ V}, V_{GS} = 2.0\text{ V}$
Drain-Source Breakdown Voltage	V_{BD}	84	—	—	V	$V_{GS} = -8\text{ V}, I_D = 10.8\text{ mA}$
On Resistance	R_{ON}	—	0.24	—	Ω	$V_{DS} = 0.10\text{ V}$
Gate Forward Voltage	V_{G-ON}	—	1.0	—	V	$I_{GS} = 10.8\text{ mA}$
RF Characteristics						
Small Signal Gain	G_{SS}	—	15	—	dB	$V_{DD} = 28\text{ V}, I_{DQ} = 500\text{ mA}$
Saturated Output Power ¹	P_{SAT}	—	45	—	W	
Drain Efficiency ²	η	—	65	—	%	$V_{DD} = 28\text{ V}, I_{DQ} = 500\text{ mA}, P_{SAT} = 45\text{ W}$
Intermodulation Distortion	IM3	—	-30	—	dBc	$V_{DD} = 28\text{ V}, I_{DQ} = 500\text{ mA}, P_{OUT} = 45\text{ W PEP}$
Output Mismatch Stress ³	VSWR	—	—	10 : 1	Ψ	$V_{DD} = 28\text{ V}, I_{DQ} = 500\text{ mA}, P_{OUT} = 45\text{ W (CW)}$
Dynamic Characteristics						
Input Capacitance	C_{GS}	—	11.0	—	pF	$V_{DS} = 28\text{ V}, V_{GS} = -8\text{ V}, f = 1\text{ MHz}$
Output Capacitance	C_{DS}	—	3.0	—		
Feedback Capacitance	C_{GD}	—	0.7	—		

Notes:

¹ P_{SAT} is defined as $I_G = 0.7\text{ mA}$

² Drain Efficiency = P_{OUT} / P_{DC}

³ No damage at all phase angles



Typical Performance

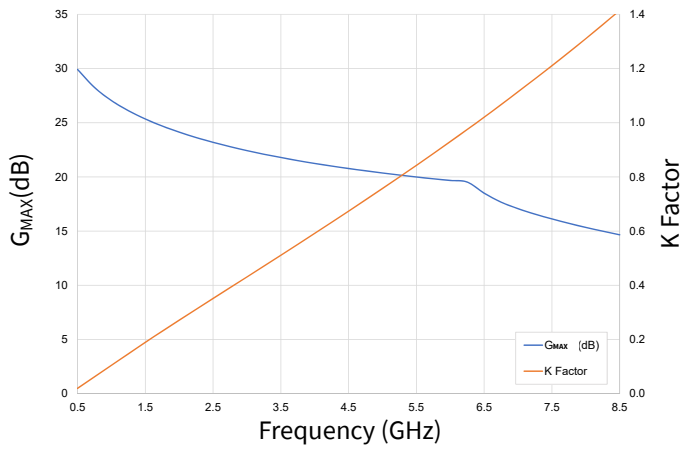


Figure 1. Simulated Maximum Available Gain and K Factor
 $V_{DD} = 28\text{ V}$, $I_{DQ} = 500\text{ mA}$

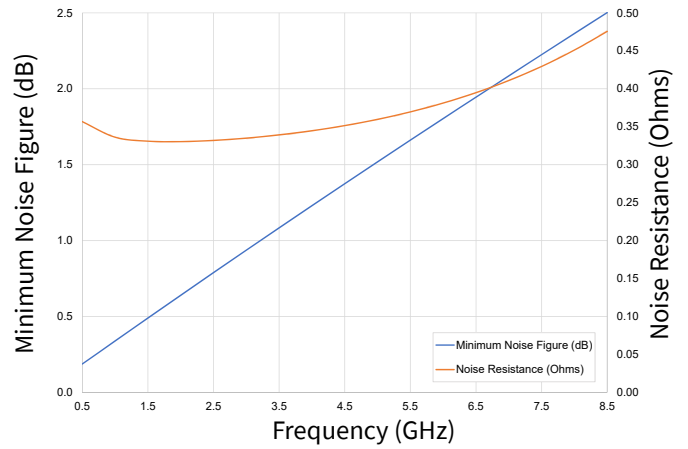


Figure 2. Simulated Minimum Noise Figure and Noise Resistance vs. Frequency
 $V_{DD} = 28\text{ V}$, $I_{DQ} = 500\text{ mA}$

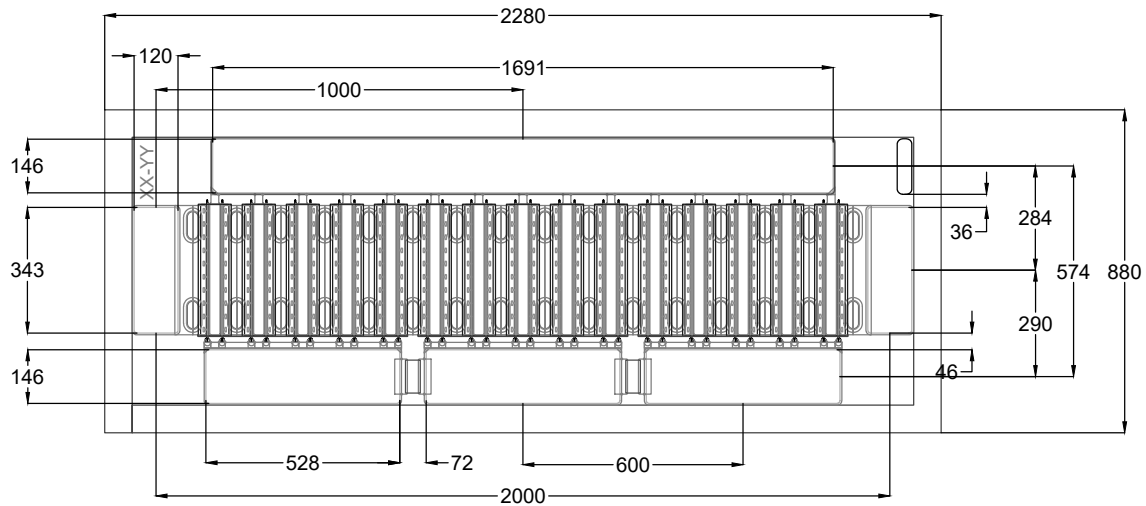
Intrinsic die parameters - reference planes at centers of gate and drain bonding pads. No wire bonds assumed.

Electrostatic Discharge (ESD) Classifications

Parameter	Symbol	Class	Classification Level	Test Methodology
Human Body Model	HBM	TBD	ANSI/ESDA/JEDEC JS-001 Table 3	JEDEC JESD22 A114-D



Die Dimensions (units in microns)



- Recommended solder is AuSn (80/20) solder. Refer to Wolfspeed's website for the Eutectic Die Bond Procedure application note at <https://www.wolfspeed.com/rf/document-library>
- Vacuum collet is the preferred method of pick-up.
- The backside of the die is the Source (ground) contact.
- Die back side gold plating is 5 microns thick minimum.
- Thermosonic ball or wedge bonding are the preferred connection methods.
- Gold wire must be used for connections.
- Use the die label (XX-YY) for correct orientation.



Typical Package S-Parameters for CG2H80045D
 (Small Signal, $V_{DS} = 28\text{ V}$, $I_{DQ} = 250\text{ mA}$, magnitude/angle)

Frequency	Mag S11	Ang S11	Mag S21	Ang S21	Mag S12	Ang S12	Mag S22	Ang S22
0.5	0.942	-164.275	10.729	92.353	0.013	1.630	0.703	-171.310
0.6	0.941	-166.816	8.953	90.072	0.013	-0.450	0.707	-172.076
0.7	0.941	-168.631	7.674	88.148	0.013	-2.145	0.710	-172.549
0.8	0.941	-169.989	6.709	86.448	0.013	-3.603	0.712	-172.837
0.9	0.942	-171.041	5.956	84.900	0.013	-4.907	0.715	-173.003
1.0	0.942	-171.880	5.351	83.460	0.013	-6.105	0.717	-173.083
1.2	0.942	-173.126	4.438	80.804	0.013	-8.293	0.722	-173.079
1.4	0.943	-174.005	3.782	78.348	0.013	-10.303	0.726	-172.944
1.6	0.943	-174.656	3.287	76.027	0.013	-12.197	0.731	-172.741
1.8	0.944	-175.155	2.900	73.808	0.013	-14.007	0.736	-172.506
2.0	0.945	-175.549	2.588	71.669	0.012	-15.749	0.742	-172.260
2.2	0.945	-175.868	2.331	69.599	0.012	-17.433	0.748	-172.017
2.4	0.946	-176.132	2.116	67.590	0.012	-19.064	0.754	-171.787
2.6	0.947	-176.354	1.932	65.636	0.012	-20.646	0.760	-171.576
2.8	0.948	-176.545	1.774	63.735	0.012	-22.181	0.766	-171.387
3.0	0.949	-176.711	1.637	61.884	0.012	-23.670	0.772	-171.222
3.2	0.950	-176.858	1.516	60.081	0.012	-25.116	0.779	-171.082
3.4	0.951	-176.989	1.409	58.324	0.011	-26.518	0.785	-170.966
3.6	0.952	-177.109	1.313	56.613	0.011	-27.877	0.792	-170.875
3.8	0.952	-177.218	1.227	54.946	0.011	-29.194	0.798	-170.808
4.0	0.953	-177.319	1.150	53.322	0.011	-30.470	0.804	-170.763
4.2	0.954	-177.414	1.080	51.740	0.011	-31.705	0.810	-170.739
4.4	0.955	-177.504	1.016	50.200	0.010	-32.900	0.816	-170.734
4.6	0.956	-177.589	0.958	48.699	0.010	-34.056	0.822	-170.748
4.8	0.957	-177.670	0.905	47.239	0.010	-35.174	0.828	-170.777
5.0	0.958	-177.748	0.856	45.816	0.010	-36.254	0.834	-170.822
5.2	0.959	-177.823	0.810	44.431	0.010	-37.298	0.839	-170.880
5.4	0.959	-177.897	0.769	43.081	0.010	-38.306	0.845	-170.951
5.6	0.960	-177.968	0.730	41.767	0.009	-39.280	0.850	-171.032
5.8	0.961	-178.037	0.694	40.487	0.009	-40.220	0.855	-171.123
6.0	0.962	-178.105	0.661	39.240	0.009	-41.127	0.859	-171.223
6.2	0.962	-178.171	0.630	38.025	0.009	-42.003	0.864	-171.330
6.4	0.963	-178.237	0.601	36.841	0.009	-42.848	0.869	-171.443
6.6	0.964	-178.301	0.574	35.687	0.008	-43.663	0.873	-171.563
6.8	0.964	-178.364	0.549	34.562	0.008	-44.449	0.877	-171.687
7.0	0.965	-178.426	0.525	33.465	0.008	-45.208	0.881	-171.816
7.2	0.966	-178.487	0.503	32.394	0.008	-45.940	0.885	-171.948
7.4	0.966	-178.547	0.482	31.350	0.008	-46.645	0.889	-172.083
7.6	0.967	-178.607	0.462	30.331	0.008	-47.326	0.892	-172.220
7.8	0.967	-178.666	0.444	29.336	0.007	-47.982	0.895	-172.360
8.0	0.968	-178.724	0.426	28.364	0.007	-48.614	0.899	-172.501

To download the s-parameters in s2p format, go to the [CG2H80045D](#) Product page and click on the documentation tab.

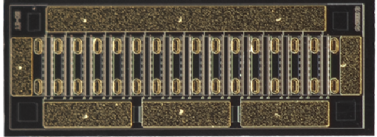


Typical Package S-Parameters for CG2H80045D
 (Small Signal, $V_{DS} = 28\text{ V}$, $I_{DQ} = 500\text{ mA}$, magnitude/angle)

Frequency	Mag S11	Ang S11	Mag S21	Ang S21	Mag S12	Ang S12	Mag S22	Ang S22
0.5	0.948	-165.710	10.792	92.215	0.011	0.034	0.738	-172.689
0.6	0.949	-168.027	9.000	90.194	0.011	-1.754	0.742	-173.378
0.7	0.949	-169.687	7.713	88.498	0.011	-3.154	0.745	-173.832
0.8	0.949	-170.933	6.744	87.006	0.011	-4.321	0.747	-174.136
0.9	0.949	-171.903	5.988	85.652	0.011	-5.345	0.750	-174.337
1.0	0.950	-172.677	5.381	84.395	0.011	-6.274	0.751	-174.464
1.2	0.950	-173.835	4.469	82.076	0.011	-7.964	0.755	-174.572
1.4	0.950	-174.657	3.814	79.931	0.010	-9.522	0.758	-174.555
1.6	0.951	-175.269	3.321	77.900	0.010	-11.004	0.762	-174.464
1.8	0.951	-175.742	2.936	75.952	0.010	-12.436	0.765	-174.331
2.0	0.952	-176.118	2.626	74.068	0.010	-13.829	0.769	-174.174
2.2	0.952	-176.423	2.371	72.237	0.010	-15.189	0.773	-174.006
2.4	0.953	-176.677	2.158	70.452	0.010	-16.520	0.777	-173.835
2.6	0.953	-176.890	1.976	68.708	0.010	-17.824	0.781	-173.667
2.8	0.954	-177.074	1.820	67.003	0.010	-19.100	0.785	-173.507
3.0	0.954	-177.233	1.684	65.333	0.010	-20.349	0.790	-173.358
3.2	0.955	-177.373	1.564	63.698	0.010	-21.571	0.794	-173.221
3.4	0.956	-177.498	1.458	62.096	0.009	-22.765	0.799	-173.097
3.6	0.956	-177.611	1.363	60.527	0.009	-23.932	0.803	-172.988
3.8	0.957	-177.713	1.278	58.990	0.009	-25.071	0.808	-172.894
4.0	0.957	-177.807	1.202	57.484	0.009	-26.183	0.812	-172.814
4.2	0.958	-177.895	1.132	56.009	0.009	-27.266	0.817	-172.750
4.4	0.959	-177.976	1.069	54.565	0.009	-28.322	0.822	-172.699
4.6	0.959	-178.053	1.010	53.151	0.009	-29.349	0.826	-172.662
4.8	0.960	-178.126	0.957	51.766	0.009	-30.349	0.831	-172.639
5.0	0.960	-178.195	0.908	50.410	0.008	-31.321	0.835	-172.627
5.2	0.961	-178.262	0.863	49.083	0.008	-32.266	0.840	-172.628
5.4	0.962	-178.326	0.821	47.785	0.008	-33.184	0.844	-172.640
5.6	0.962	-178.388	0.782	46.513	0.008	-34.075	0.848	-172.661
5.8	0.963	-178.448	0.746	45.269	0.008	-34.940	0.852	-172.693
6.0	0.963	-178.507	0.712	44.051	0.008	-35.779	0.856	-172.733
6.2	0.964	-178.564	0.680	42.860	0.008	-36.592	0.860	-172.782
6.4	0.965	-178.621	0.651	41.693	0.007	-37.381	0.864	-172.838
6.6	0.965	-178.676	0.623	40.551	0.007	-38.144	0.868	-172.901
6.8	0.966	-178.730	0.597	39.434	0.007	-38.884	0.871	-172.970
7.0	0.966	-178.783	0.573	38.339	0.007	-39.600	0.875	-173.045
7.2	0.967	-178.836	0.550	37.268	0.007	-40.293	0.878	-173.125
7.4	0.967	-178.887	0.528	36.219	0.007	-40.963	0.882	-173.209
7.6	0.967	-178.939	0.508	35.192	0.007	-41.611	0.885	-173.298
7.8	0.968	-178.989	0.488	34.186	0.007	-42.238	0.888	-173.391
8.0	0.968	-179.039	0.470	33.200	0.006	-42.843	0.891	-173.487

To download the s-parameters in s2p format, go to the [CG2H80045D](#) Product page and click on the documentation tab.

Product Ordering Information

Order Number	Description	Unit of Measure	Image
CG2H80045D	GaN HEMT Bare Die	Each	

**For more information, please contact:**

4600 Silicon Drive
Durham, NC 27703 USA
Tel: +1.919.313.5300
www.wolfspeed.com/RF

Sales Contact
RFSales@wolfspeed.com

RF Product Marketing Contact
RFMarketing@wolfspeed.com

Notes & Disclaimer

Specifications are subject to change without notice. “Typical” parameters are the average values expected by Wolfspeed in large quantities and are provided for information purposes only. Wolfspeed products are not warranted or authorized for use as critical components in medical, life-saving, or life-sustaining applications, or other applications where a failure would reasonably be expected to cause severe personal injury or death. No responsibility is assumed by Wolfspeed for any infringement of patents or other rights of third parties which may result from use of the information contained herein. No license is granted by implication or otherwise under any patent or patent rights of Wolfspeed.

© 2019-2022 Wolfspeed, Inc. All rights reserved. Wolfspeed® and the Wolfstreak logo are registered trademarks and the Wolfspeed logo is a trademark of Wolfspeed, Inc.
PATENT: <https://www.wolfspeed.com/legal/patents>

The information in this document is subject to change without notice.