

CABLE 395 RF: I-PEX MHF + RP SMA RIGHT ANGLE BULKHEAD JACK WITH O-RING RATED TO IP67/68 + MULTIPLE CABLE SIZES, 6GHz

SPECIFICATIONS :

1. I-PEX MHF PLUG, P/N: FOR RG178 CABLE: 20278-112R-18, FOR ϕ 1.13MM CABLE: 20278-112R-13, FOR ϕ 1.37MM CABLE: 20351-112R-37.
2. COAXIAL CABLE, SEE P/N OPTION FOR DETAIL.
3. RP SMA RIGHT ANGLE BULKHEAD JACK WITH O-RING RATED TO IP67/68, GOLD PLATED, P/N:
FOR RG178 CABLE: RFCT-SMA077-F78.
FOR ϕ 1.13MM CABLE: RFCT-SMA078-F13.
FOR ϕ 1.37MM CABLE: RFCT-SMA078-F37.

ENVIRONMENTAL:

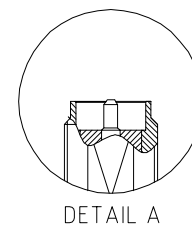
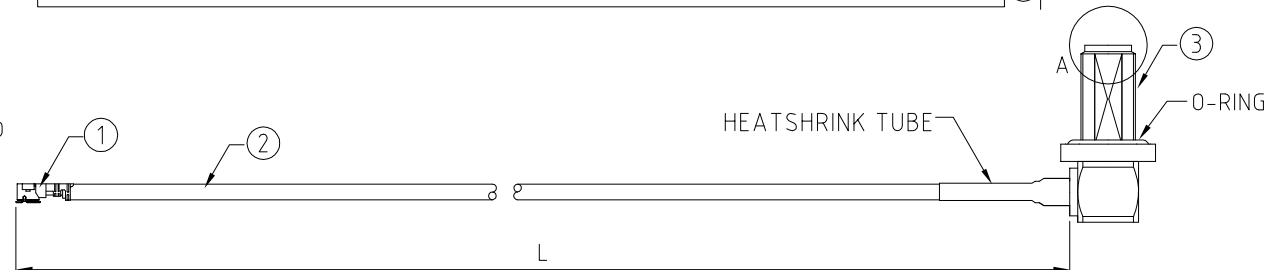
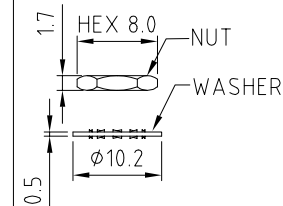
- A. BULKHEAD MOUNTED CONNECTOR (RFCT-SMA077-F78/ RFCT-SMA078-F13) RATED TO THE FOLLOWING SPECIFICATION:
- i. IP6X – DUST TIGHT – NO PARTICLE INGRESS.
 - ii. IPX7 WATERPROOF FOR 30 MINUTES UP TO 1 METER UNDERWATER.
 - iii. IPX8 WATERPROOF FOR 48 HOURS AT 1 METER UNDERWATER.

NOTES:

1. THE ORIENTATION OF CONNECTORS ON DRAWING IS FOR REFERENCE ONLY,
IF THE ORDER IS LEFT BLANK THE CONNECTOR WILL NOT HAVE FIXED
ORIENTATION.
2. FIXED ORIENTATION IS SUGGESTED FOR CABLE LENGTH 50MM TO 100MM.
PLEASE SPECIFY THE FIXED ORIENTATIONS FROM THE ORDER CODE (F1, F2, ETC)
3. CONTACT GRADCONN IF THE ORIENTATION YOU REQUIRE IS NOT SHOWN.
4. WORKING FREQUENCY RANGE: DC-6GHz.
5. OPERATING TEMPERATURE: -40°C TO +85°C
6. IMPEDANCE: 50 OHM.

USAGE PRECAUTIONS: CABLES USING 'MICRO' COAX ARE DELICATE:

- (i) HANDLE WITH CARE.
- (ii) DO NOT TWIST; APPLY EXCESSIVE FORCES OR SHARP BENDS TO THE CABLE. DO NOT FORCEFULLY DEFORM WIRES.
- (iii) CONSULT CONNECTOR MANUFACTURER'S DATASHEETS FOR DETAILED NOTES ON HANDLING INSTRUCTIONS.



HOW TO ORDER

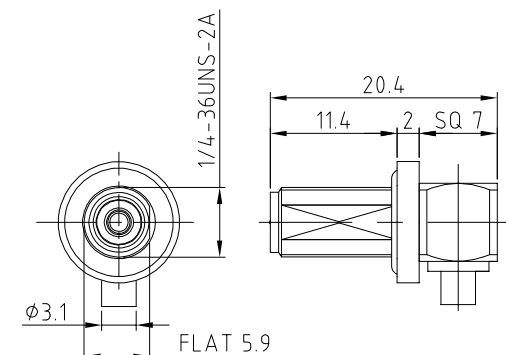
CABLE 395 RF - X X X - X X - X - X

"L" LENGTH IN MM:
eg: 100MM = 100
(MIN. 050-MAX.400
STANDARD = 100, 150, 200)
Tolerance: 50-200mm: ± 5 mm.
201-400mm: ± 7 mm.

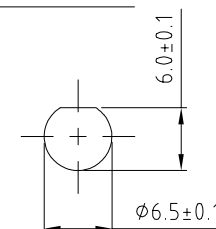
CABLE SIZE OPTIONS:
1 = RG178 CABLE, COLOR: BROWN
2 = Ø1.13MM CABLE, COLOR: GRAY
3 = Ø1.37MM CABLE, COLOR: BLACK

WASHER AND NUT OPTIONS:
BLANK = SEPARATELY PACKED (STANDARD)
A = ASSEMBLED WITH CONNECTOR

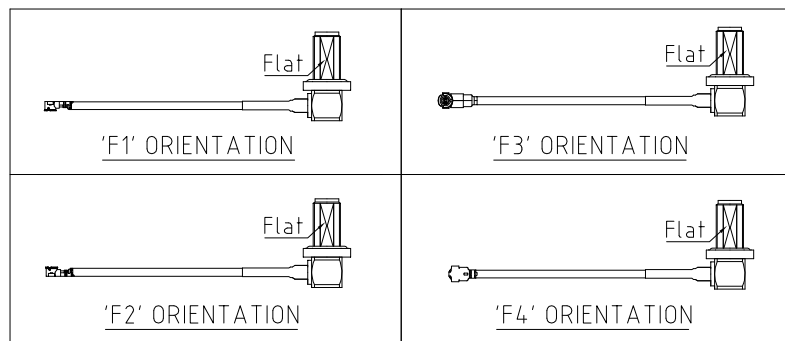
ORIENTATION OPTIONS:
 BLANK = DOES NOT HAVE A FIXED ORIENTATION
 F1 = OPPOSITE ORIENTATION (L=50-200MM)
 F2 = SAME ORIENTATION (L=50-200MM)
 F3 = LEFT CONNECTION SAME AS D-FLAT (L=50-200MM)
 F4 = LEFT CONNECTION OPPOSITE TO D-FLAT (L=50-200MM)
 (SEE NOTES 1 2 3 AND DIAGRAMS FOR MORE INFORMATION)




SMA DETAIL DRAWING



RECOMMENDED SMA
MOUNTING HOLE



Scale: NTS	THIRD ANGLE		Unstated X XX XXX ANGLES	Tolerances: +0.2 +0.2 +0.2 N/A
Drawn: NYW				
App'd: XXX	Title CABLE ASSEMBLY			
Date: 5 SEP '23	Revision: 1.3		Unit: mm	

 <p>IP67/68 Rated Cables</p>	 <p>www.gradconn.com</p>	Drawing Number: CABLE 395 RF	
		Sheet 1	of 1
© THIS DRAWING IS CONFIDENTIAL AND MUST NOT BE COPIED OR DISCLOSED WITHOUT WRITTEN CONSENT		Drawing ©	E and O E