

CABLE 391 RF: MMCX R/A PLUG + SMA RIGHT ANGLE BULKHEAD JACK WITH O-RING RATED TO IP67/68 + MULTIPLE CABLE SIZES, 6GHz

SPECIFICATIONS :

1. MMCX RIGHT ANGLE PLUG, P/N: RFCT-MMCX003-M78.
2. COAXIAL CABLE, SEE P/N OPTIONS FOR DETAIL.
3. SMA RIGHT ANGLE BULKHEAD JACK WITH O-RING RATED TO IP67/68, GOLD PLATED.  
P/N FOR RG178 CABLE: RFCT-SMA073-F78.  
P/N FOR Ø1.37MM CABLE: RFCT-SMA080-F37.

## ENVIRONMENTAL:

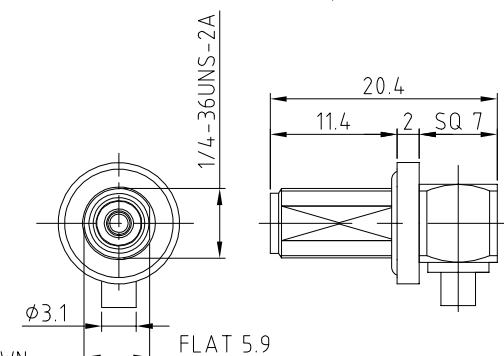
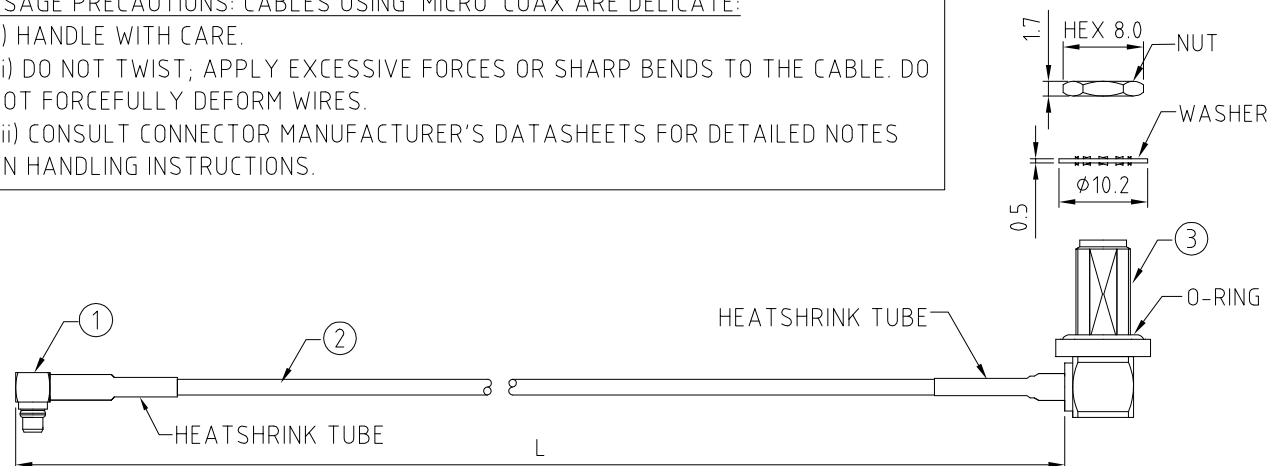
- A. BULKHEAD MOUNTED CONNECTOR (RFCT-SMA073-F78/RFCT-SMA080-F37)  
RATED TO  
THE FOLLOWING SPECIFICATION:
- i. IP6X - DUST TIGHT - NO PARTICLE INGRESS.
  - ii. IPX7 WATERPROOF FOR 30 MINUTES UP TO 1 METER UNDERWATER.
  - iii. IPX8 WATERPROOF FOR 48 HOURS AT 1 METER UNDERWATER.

NOTES:

1. THE ORIENTATION OF CONNECTORS ON DRAWING IS FOR REFERENCE ONLY, IF THE ORDER IS LEFT BLANK THE CONNECTOR WILL NOT HAVE FIXED ORIENTATION.
2. FIXED ORIENTATION IS SUGGESTED FOR CABLE LENGTH 50MM TO 100MM. PLEASE SPECIFY THE FIXED ORIENTATIONS FROM THE ORDER CODE (F1, F2, ETC)
3. CONTACT GRADCONN IF THE ORIENTATION YOU REQUIRE IS NOT SHOWN.
4. WORKING FREQUENCY RANGE: DC-6GHz.
5. OPERATING TEMPERATURE: -40°C~+125°C.
6. IMPEDANCE: 50 Ohm.

USAGE PRECAUTIONS: CABLES USING 'MICRO' COAX ARE DELICATE:

- (ii) HANDLE WITH CARE.
- (iii) DO NOT TWIST; APPLY EXCESSIVE FORCES OR SHARP BENDS TO THE CABLE. DO NOT FORCEFULLY DEFORM WIRES.
- (iii) CONSULT CONNECTOR MANUFACTURER'S DATASHEETS FOR DETAILED NOTES ON HANDLING INSTRUCTIONS.



## HOW TO ORDER

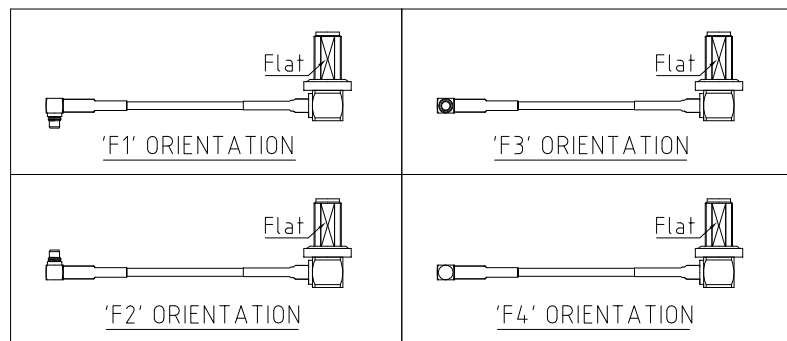
CABLE 391 RF - X X X - X X - X - X

"L" LENGTH IN MM:  
eg: 100MM = 100  
(MIN. 050-MAX.400  
STANDARD = 100, 150, 200)  
Tolerance: 50-200mm:  $\pm 5$ mm.  
201-400mm:  $\pm 7$ mm.

CABLE SIZE OPTIONS:  
1 = RG178 CABLE, COLOR: BROWN  
2 =  $\phi$ 1.37MM CABLE, COLOR: BLACK

WASHER AND NUT OPTIONS:  
BLANK = SEPARATELY PACKED (STANDARD)  
A = ASSEMBLED WITH CONNECTOR


ORIENTATION OPTIONS:  
 BLANK = DOES NOT HAVE A FIXED ORIENTATION  
 F1 = OPPOSITE ORIENTATION (L=50-200MM)  
 F2 = SAME ORIENTATION (L=50-200MM)  
 F3 = LEFT CONNECTION SAME AS D-FLAT (L=50-200MM)  
 F4 = LEFT CONNECTION OPPOSITE TO D-FLAT (L=50-200MM)  
 (SEE NOTES 1, 2, 3 AND DIAGRAMS FOR MORE INFORMATION)



SMA DETAIL DRAWING

RECOMMENDED SMA  
MOUNTING HOLE

REV.	DATE	& DRN
1.0	22/04/'20	- CC RELEASE
1.1	28/04/'20	- NYW ADD NOTE 7.
1.2	27/07/'20	- NYW REMOVE NOTE 7. AMEND OPERATING TEMP..
1.3	09/06/'21	- NYW ADD CABLE SIZE OPTION 2.
1.4	25/06/'21	- NYW ADD SMA P/N FOR 137 CABLE.

Scale: NTS	THIRD ANGLE	Unstated X XX XXX ANGLES	Tolerances: N/A N/A N/A N/A
Drawn: CC			
App'd: XXX	Title CABLE ASSEMBLY		
Date: 25 JUN. '21	Revision:1.4	Unit: mm	

				Type: Cable 391 RF  CABLE 391 RF	
IP67/68 Rated Cables		<a href="http://www.gradconn.com">www.gradconn.com</a>		Drawing Number:	
				Sheet 1	of 1
© THIS DRAWING IS CONFIDENTIAL AND MUST NOT BE COPIED OR DISCLOSED WITHOUT WRITTEN CONSENT				Drawing ©	E and O E