

CAB530RF: I-PEX MHF 4L + SMA STRAIGHT BULKHEAD JACK WITH O-RING RATED TO IP67/68 + ϕ 1.37MM LOW LOSS CABLE, 8GHz

SPECIFICATIONS :

1. I-PEX MHF4L PLUG, P/N: 20632-001R-37.
2. ϕ 1.37MM LOW LOSS COAXIAL CABLE, COLOR: BLACK.
3. SMA STRAIGHT BULKHEAD JACK WITH O-RING RATED TO IP67/68, P/N: RFCT-SMA108-F37.

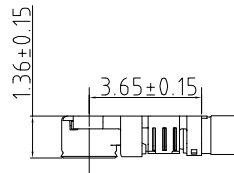
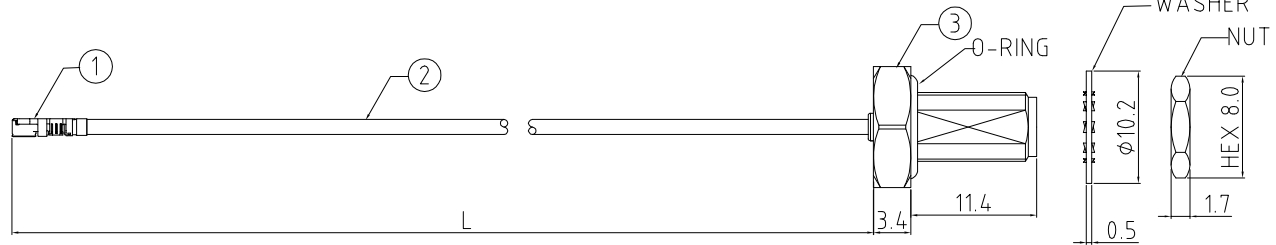
USAGE PRECAUTIONS: CABLES USING 'MICRO' COAX ARE DELICATE:
 (i) HANDLE WITH CARE.
 (ii) DO NOT TWIST; APPLY EXCESSIVE FORCES OR SHARP BENDS TO THE CABLE. DO NOT FORCEFULLY DEFORM WIRES.
 (iii) CONSULT CONNECTOR MANUFACTURER'S DATASHEETS FOR DETAILED NOTES ON HANDLING INSTRUCTIONS.

ENVIRONMENTAL:

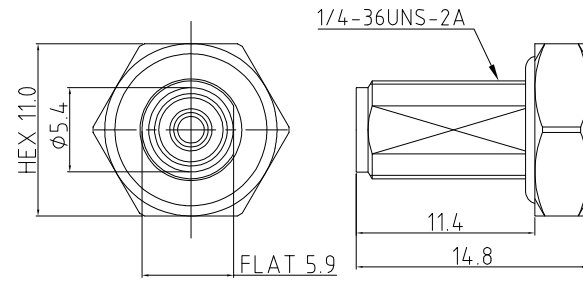
- A. BULKHEAD MOUNTED CONNECTOR (RFCT-SMA108-F37)
 RATED TO THE FOLLOWING SPECIFICATION:
- i. IP6X - DUST TIGHT - NO PARTICLE INGRESS.
 - ii. IPX7 WATERPROOF FOR 30 MINUTES UP TO 1 METER UNDERWATER.
 - iii. IPX8 WATERPROOF FOR 48 HOURS AT 1 METER UNDERWATER.

NOTES:

1. WORKING FREQUENCY RANGE: DC-8GHz.
2. OPERATING TEMPERATURE: -40°C TO +85°C.
3. IMPEDANCE: 50 Ohm.



I-PEX 4L DETAIL DRAWING



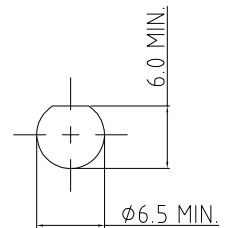
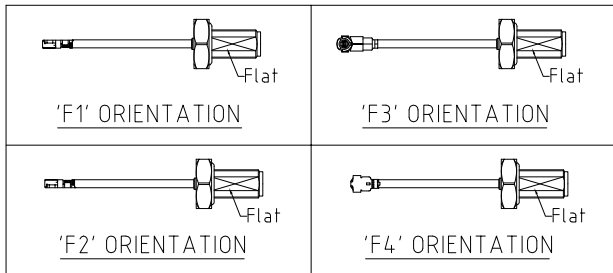
SMA JACK DETAIL DRAWING

HOW TO ORDER
 CAB530RF - X X X X - X X - X - 1

"L" LENGTH IN MM
 eg: 100MM = 0100
 (MIN. 0050-MAX.0400)
 STANDARD = 0100, 0150, 0200)
 Tolerance: 50-200mm: \pm 5mm.
 201-400mm: \pm 7mm.

WASHER AND NUT OPTIONS:
 BLANK = SEPERATELY PACKED (STANDARD)
 A = ASSEMBLED WITH CONNECTOR

ORIENTATION OPTIONS:
 BLANK = DOES NOT HAVE A FIXED ORIENTATION
 F1 = MHF CONNECTION DOWN (L=50-200MM)
 F2 = MHF CONNECTION UP (L=50-200MM)
 F3 = MHF CONNECTION AND D FLAT SAME ORIENTATION (L=50-200MM)
 F4 = MHF CONNECTION AND D FLAT OPPOSITE ORIENTATION (L=50-200MM)
 (SEE NOTES 1, 2, 3 AND DIAGRAMS FOR MORE INFORMATION)



RECOMMENDED SMA MOUNTING HOLE

REV. DATE & DRN
 TO 30/09/22 - NYW RELEASE
 11 22/05/23 - NYW
 12 01/07/23 - NYW
 13 01/07/23 - NYW
 14 01/07/23 - NYW
 15 01/07/23 - NYW
 16 01/07/23 - NYW
 17 01/07/23 - NYW
 18 01/07/23 - NYW
 19 01/07/23 - NYW
 20 01/07/23 - NYW
 21 01/07/23 - NYW
 22 01/07/23 - NYW
 23 01/07/23 - NYW
 24 01/07/23 - NYW
 25 01/07/23 - NYW
 26 01/07/23 - NYW
 27 01/07/23 - NYW
 28 01/07/23 - NYW
 29 01/07/23 - NYW
 30 01/07/23 - NYW
 31 01/07/23 - NYW
 32 01/07/23 - NYW
 33 01/07/23 - NYW
 34 01/07/23 - NYW
 35 01/07/23 - NYW
 36 01/07/23 - NYW
 37 01/07/23 - NYW
 38 01/07/23 - NYW
 39 01/07/23 - NYW
 40 01/07/23 - NYW
 41 01/07/23 - NYW
 42 01/07/23 - NYW
 43 01/07/23 - NYW
 44 01/07/23 - NYW
 45 01/07/23 - NYW
 46 01/07/23 - NYW
 47 01/07/23 - NYW
 48 01/07/23 - NYW
 49 01/07/23 - NYW
 50 01/07/23 - NYW
 51 01/07/23 - NYW
 52 01/07/23 - NYW
 53 01/07/23 - NYW
 54 01/07/23 - NYW
 55 01/07/23 - NYW
 56 01/07/23 - NYW
 57 01/07/23 - NYW
 58 01/07/23 - NYW
 59 01/07/23 - NYW
 60 01/07/23 - NYW
 61 01/07/23 - NYW
 62 01/07/23 - NYW
 63 01/07/23 - NYW
 64 01/07/23 - NYW
 65 01/07/23 - NYW
 66 01/07/23 - NYW
 67 01/07/23 - NYW
 68 01/07/23 - NYW
 69 01/07/23 - NYW
 70 01/07/23 - NYW
 71 01/07/23 - NYW
 72 01/07/23 - NYW
 73 01/07/23 - NYW
 74 01/07/23 - NYW
 75 01/07/23 - NYW
 76 01/07/23 - NYW
 77 01/07/23 - NYW
 78 01/07/23 - NYW
 79 01/07/23 - NYW
 80 01/07/23 - NYW
 81 01/07/23 - NYW
 82 01/07/23 - NYW
 83 01/07/23 - NYW
 84 01/07/23 - NYW
 85 01/07/23 - NYW
 86 01/07/23 - NYW
 87 01/07/23 - NYW
 88 01/07/23 - NYW
 89 01/07/23 - NYW
 90 01/07/23 - NYW
 91 01/07/23 - NYW
 92 01/07/23 - NYW
 93 01/07/23 - NYW
 94 01/07/23 - NYW
 95 01/07/23 - NYW
 96 01/07/23 - NYW
 97 01/07/23 - NYW
 98 01/07/23 - NYW
 99 01/07/23 - NYW
 100 01/07/23 - NYW

Scale: NTS	THIRD ANGLE	Unstated X XX XXX ANGLES	Tolerances: N/A N/A N/A N/A
Drawn: NYW			
App'd: XXX	Title CABLE ASSEMBLY		
Date: 22 MAY '23	Revision: 1.1	Unit: mm	

IP67/68 Rated Cables

www.gradconn.com

© THIS DRAWING IS CONFIDENTIAL AND MUST NOT BE COPIED OR DISCLOSED WITHOUT WRITTEN CONSENT

Drawing Number: CAB530RF	
Sheet 1	of 1
Drawing ©	E and O E