

EMI/EMC FILTER

RoHS

CA5 SERIES



Features

- Remarkable attenuation for high voltage impulse
- Good shield effect by using metal case
- Excellent filtering characteristics for both differential mode and common mode
- Bidirectional structure effective for both noise from outside and internally generated

Applications

- Digital equipments
- Battery, ESS equipments
- Personal computers and peripherals
- Measuring instruments, medical instruments
- For use in miniature equipment
- Suitable for FA equipments

Specifications

Model	Rated Voltage (AC, DC)	Rated Current	Leakage Current (250V AC)	Operating Temperature
CA5-V23, W23	250V (50/60Hz)	1.5A	0.35mA max.	<div style="text-align: center;"> <p>Derating Curve</p> </div>
CA5-V33, W33		3A		
CA5-V43, W43		5A		

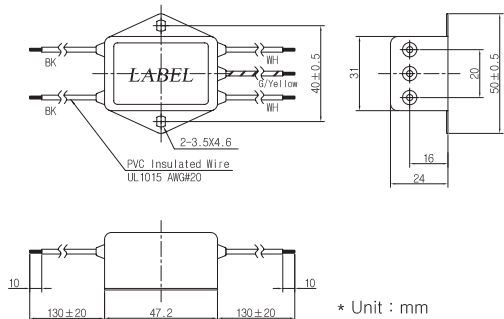
Note
 Test Voltage : 1500V AC one minute, line to earth
 Insulation Resistance : 300 Mohm
 Voltage Drop : 1V max. at rated current
 Weight : W2* - 87g, W3* - 90g, W4* - 93g

Model Number Construction

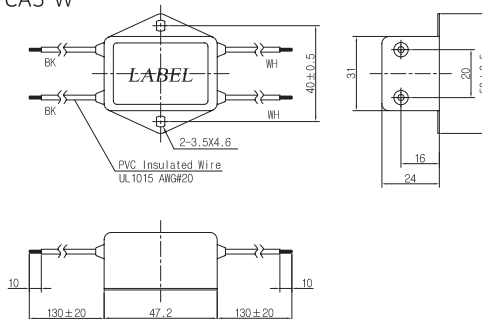
CA5	W	2	2
Series Description Screw Mounting/ Metal case	Input/Output Terminal W : without Ground Wire V : with Ground Wire	Current Rating : AC rms 2 : 1.5amp 3 : 3.0amp 4 : 5.0amp	Line-GND Cap.Value 2 : 2200 pF 3 : 3300 pF

Shapes and Dimensions

CA5-V**

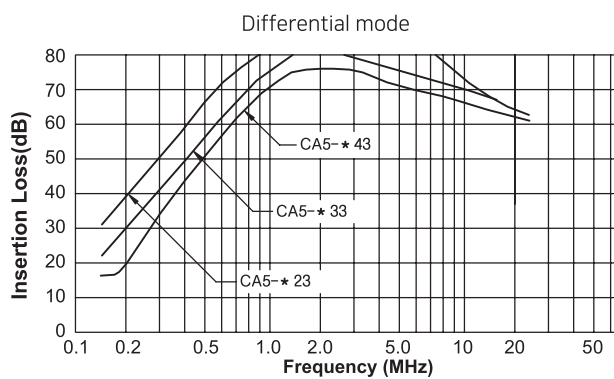
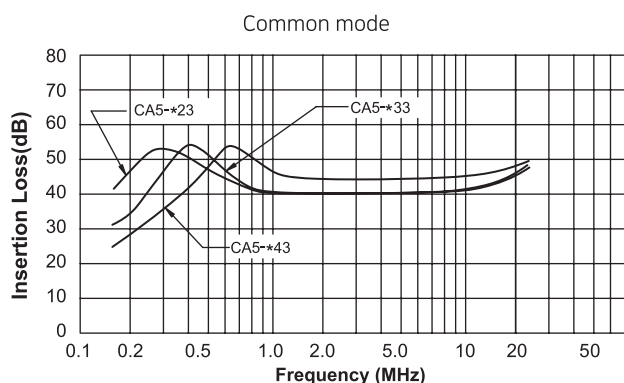


CA5-W**

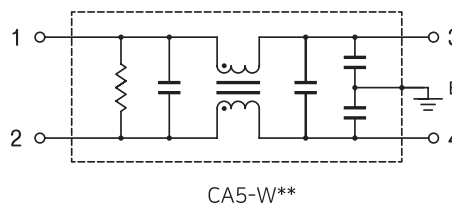
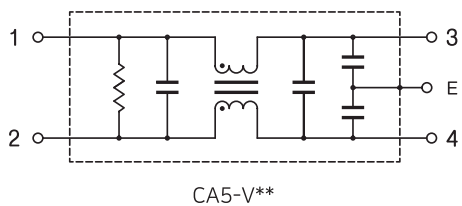


- * Unit : mm
- * General tolerance : ±1.0
- * Metal Case
- * Special wire length can be ordered

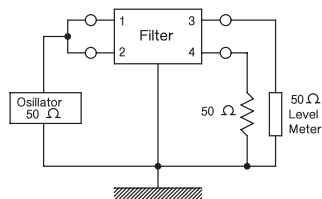
Attenuation Characteristics



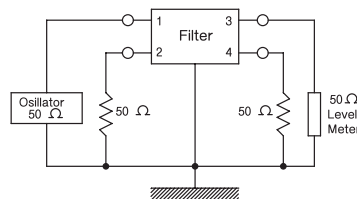
Circuit Diagram



Measurement Configuration



Common mode



Differential mode