

# Butt Connectors

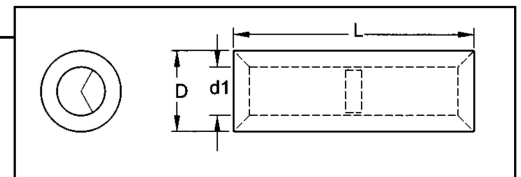
## Non-Insulated Butt Connectors

**Material:** Tin Plated Copper

**Voltage:** 176°C

**Barrel Type:** Tubular

T= Material Thickness



HOFFMAN PART NO.	WIRE SIZE	AMPS MAX	DIMENSIONS (INCHES)				UL	TAPE MOUNTED REEL QTY	DIE FOR TAPE MOUNTED	HAND TOOL
			L	D	d1	T				
C2622	26-22	9	.472	.083	.051	.016	Y	NA	NA	YHT2622
C2622/J	26-22	9	.472	.079	.047	.016	Y	NA	NA	YHT2622
C2216	22-16	18	.591	.130	.067	.031	Y	1000	3H2216	YHM228
C2216/J	22-16	18	.591	.130	.067	.031	Y	NA	NA	YHT2210
C1614	16-14	30	.591	.154	.091	.031	Y	1000	3H1614	YHM228
C1614/J	16-14	30	.591	.161	.091	.031	Y	NA	NA	YHT2210
C1210	12-10	50	.591	.213	.134	.039	Y	500	3H1210	YHM228
C1210/J	12-10	50	.591	.213	.134	.039	Y	NA	NA	YHT2210
C8R1	8	70	.827	.276	.181	.047	Y	NA	NA	YHM228
C6R1	6	95	1.024	.350	.232	.059	Y	NA	NA	
C4R1	4	125	1.142	.445	.307	.069	Y	NA	NA	AK60
C2R1	2	170	1.260	.520	.374	.073	Y	NA	NA	
C1/OR1	1/0	230	1.417	.602	.449	.077	Y	NA	NA	
C2/OR1	2/0	265	1.457	.689	.524	.083	Y	NA	NA	
C3/OR1	3/0	310	1.496	.768	.571	.098	Y	NA	NA	*Hydraulic
C4/OR1	4/0	360	1.496	.870	.646	.112	Y	NA	NA	Head
C150R1	300MCM	445	2.126	1.039	.768	.136	Y	NA	NA	603
C200R1	350MCM	505	2.244	1.122	.827	.148	Y	NA	NA	
C250R1	500MCM	620	2.480	1.276	.945	.165	Y	NA	NA	
C300R1	600MCM	690	2.835	1.457	1.102	.177	Y	NA	NA	

\* Refer to Tool Selector Chart ([page 92-93](#)) for Tool Die Numbers.

