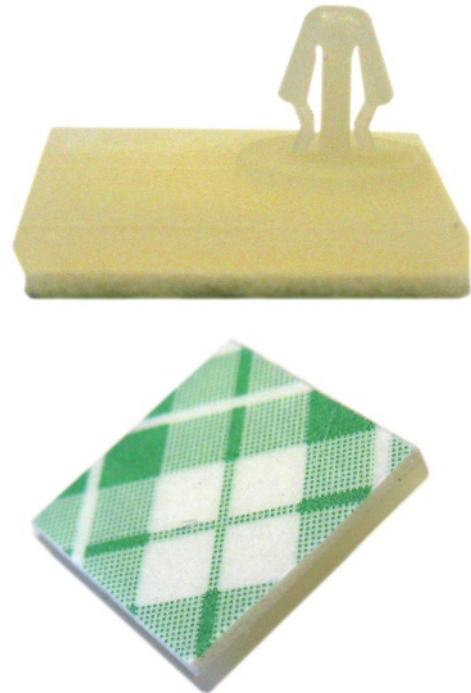
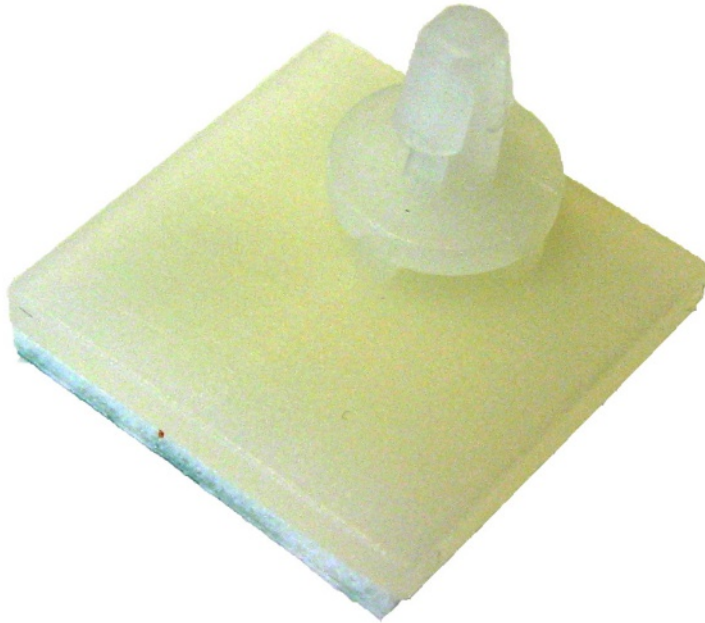


## Adhesive Standoffs (SA)

Adhesive standoffs to securely attach PCBs to flat surfaces.



### 0.12" HEIGHT - AVAILABLE QUANTITIES:

**8 Pack**

PART#:  
SA120x8

**24 Pack**

PART#:  
SA120x24

**100 Pack**

PART#:  
SA120x100

**500 Pack**

PART#:  
SA120x500

**1,000 Pack**

PART#:  
SA120x1000

### 0.18" HEIGHT - AVAILABLE QUANTITIES:

**8 Pack**

PART#:  
SA180x8

**24 Pack**

PART#:  
SA180x24

**100 Pack**

PART#:  
SA180x100

**500 Pack**

PART#:  
SA180x500

**1,000 Pack**

PART#:  
SA180x1000

### Adhesive Standoff Features:

- Low profile 0.12 or 0.18" standoff height.
- 0.6x0.6" square offset base allows use when holes are close to the PCB edge.
- Integrated clip locks PCBs with 0.125" diameter holes in place.
- Material: Nylon 66(UI), Flame Class: 94V-2.
- 3M Adhesive Tape Backing.

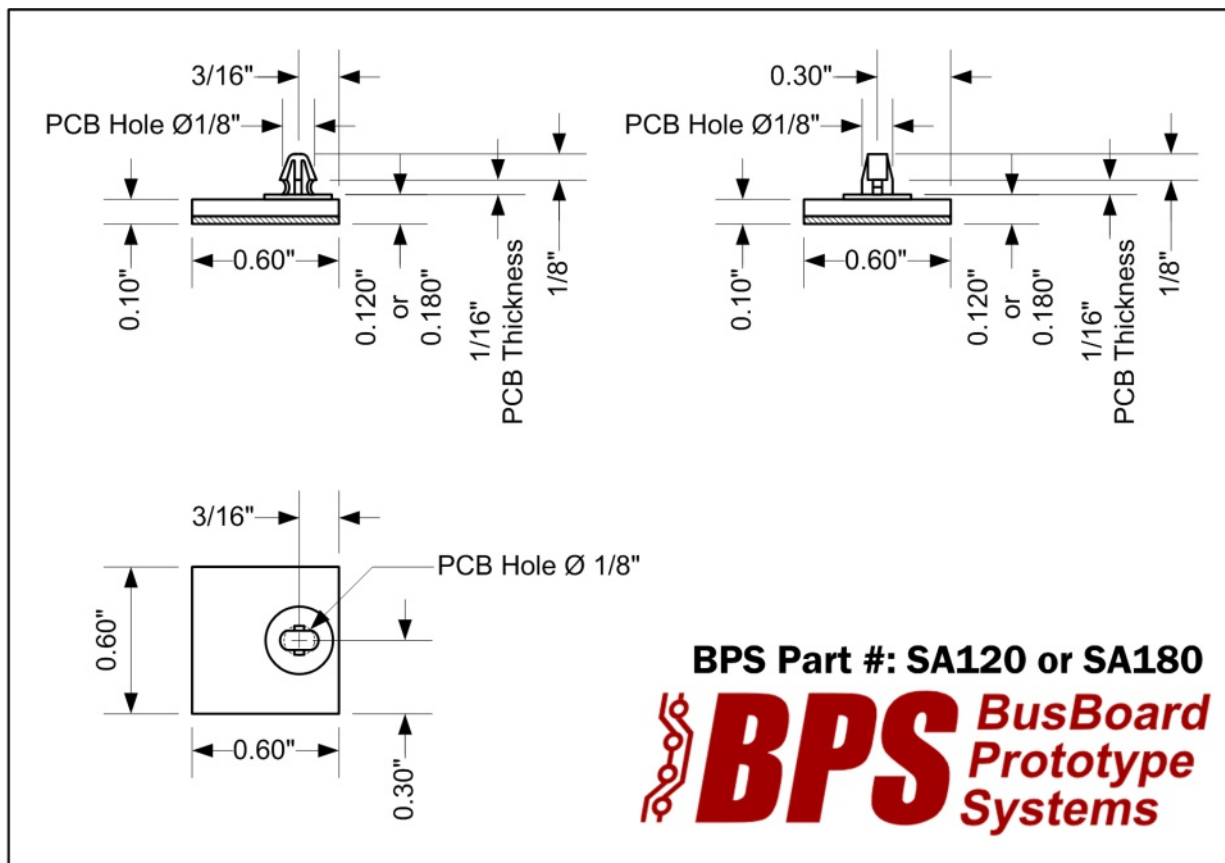


## Adhesive Standoff Details:

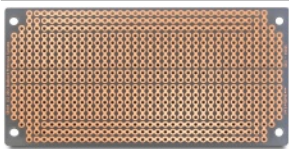
The SA120 and SA180 are low-profile adhesive standoffs with 0.120" and 0.180" standoff heights, respectively. It securely attaches your PCB to a flat surface. The post inserts into a 0.125" mounting hole. The post includes a locking tab that secures the PCB when inserted. It can be used with 1/16" or 1/32" thick PCBs.

The 0.6 x 0.6" square base is offset to allow the base to be underneath the board when the mounting hole is close to the PCB edge. The offset base provides a large sticking surface while permitting the PCB to be mounted in tight spaces or close to walls. This can be useful when working with small enclosures.

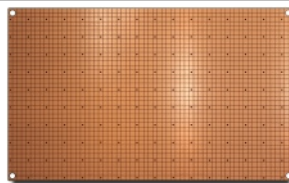
High-quality 3M brand double-sided tape secures the standoff to a flat surface.



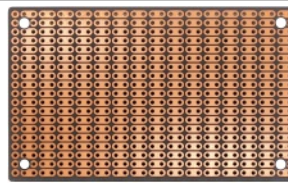
## Related Products:



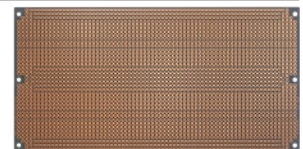
SB404 Solderable PC BreadBoard



SP3-100x100-G Size 3 SMTpads



PR2H1 ProtoBoard



SB1660 Solderable PC BreadBoard