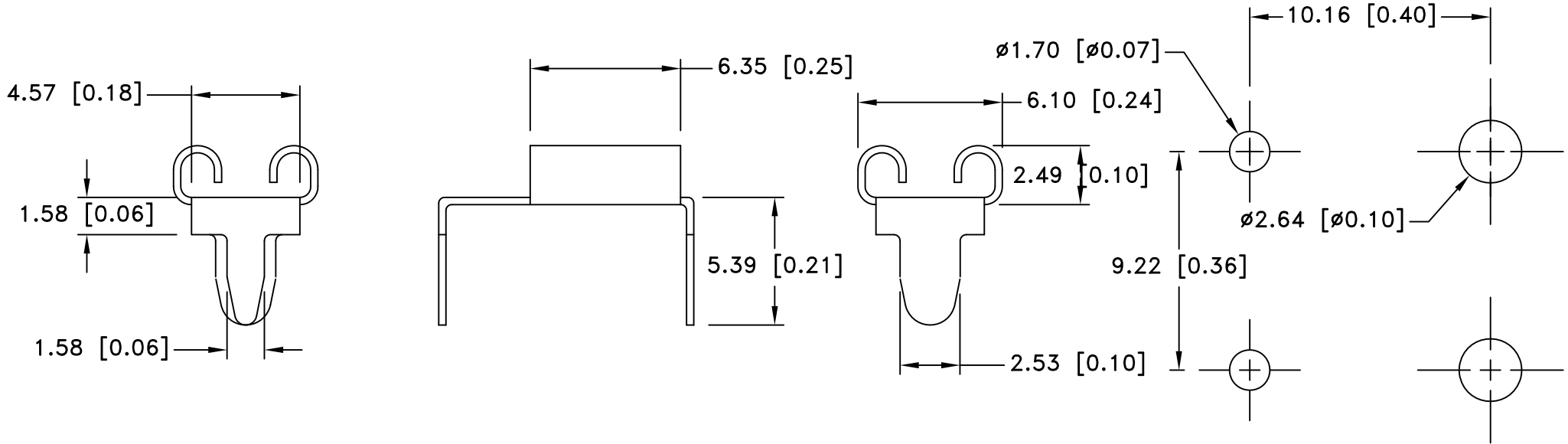



Date	SYM	REVISION RECORD	AUTH	DR.	CK.
7/08/06	A	Added "ROHS COMPLIANT"	T B	B S	
7/22/06	B	Removed "ROHS COMPLIANT"	T B	B S	
2/07/14	C	Updated Specification	T B	B S	



SPECIFICATION:

Current Rating: 15 Amps
 Fuse Entry: Horizontal
 Fuse Type: Automotive
 Material: .012 [.30] Brass, Nickel Plate
 Mounting: THM
 Style: CLIP
 Fuse Reference: Littlefuse ATO 257, Bussmann ATC, APR
 Fuse Size: Standard
 ROHS 2 COMPLIANT

MOUNTING DETAIL FOR TWO CLIPS

Tolerance (Except as noted)	 Memory Protection Devices, Inc 200 Broad Hollow Road, Farmingdale, New York 11735	Scale	Drawn By B.S.
			Approved By T.B.
decimal $\pm .5$ (.020)	Title AUTO FUSE CLIP FOR .205 x .025 STANDARD BLADE		
Fractional $\pm .8$ (.030)	Date 02/07/14	Drawing Number BK-6012	
Angular $\pm 3^\circ$			