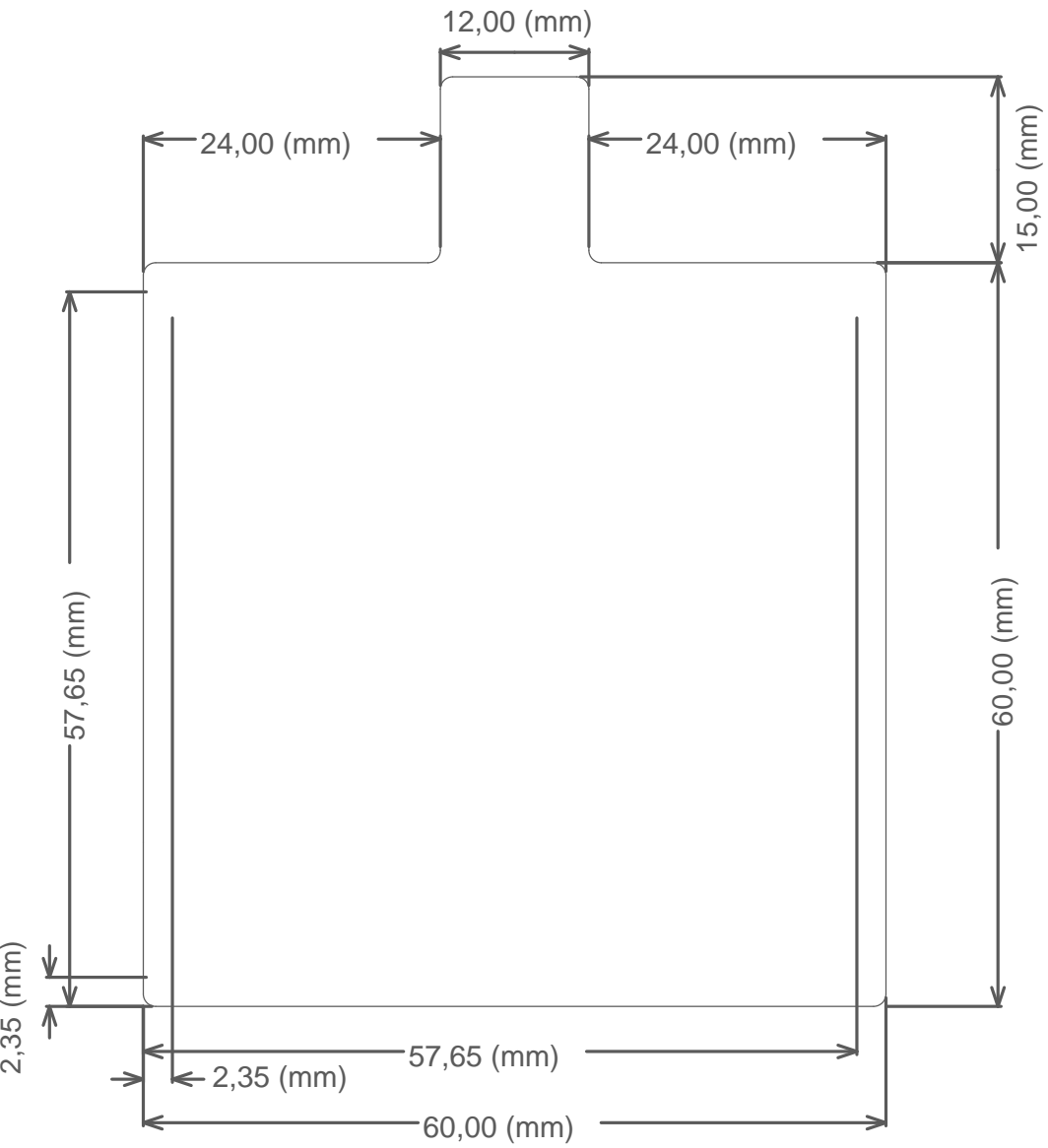
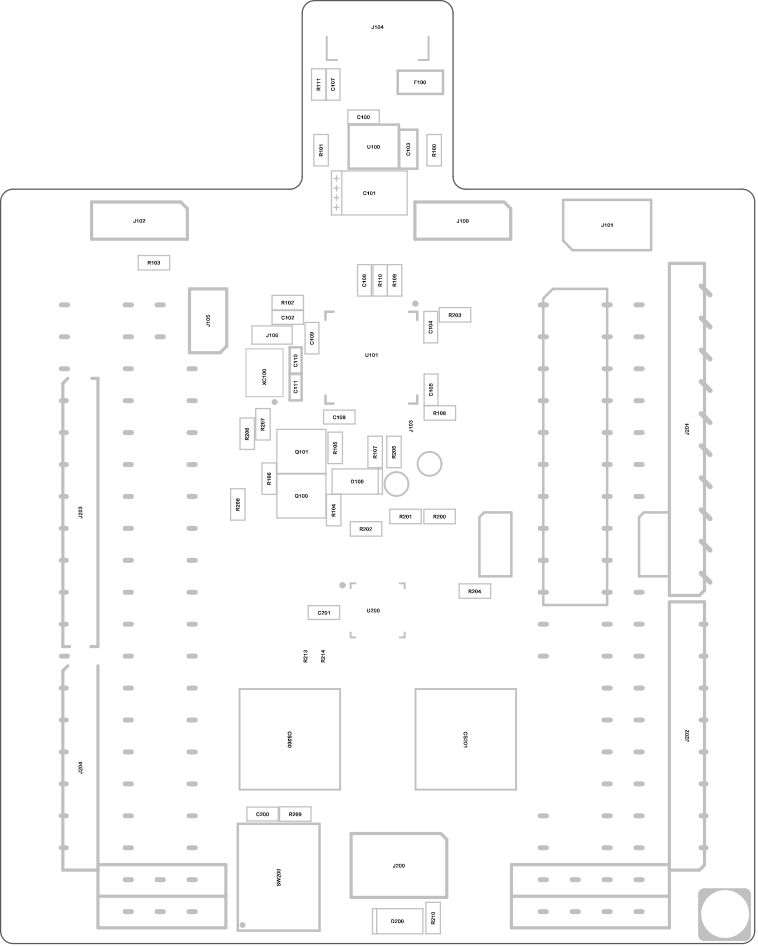
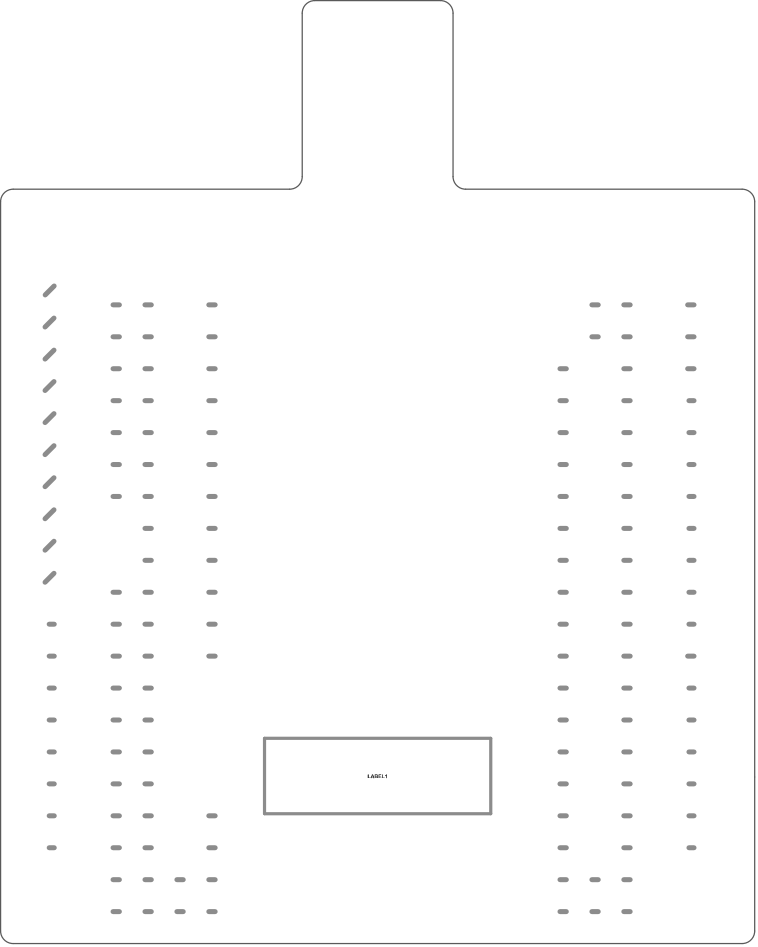


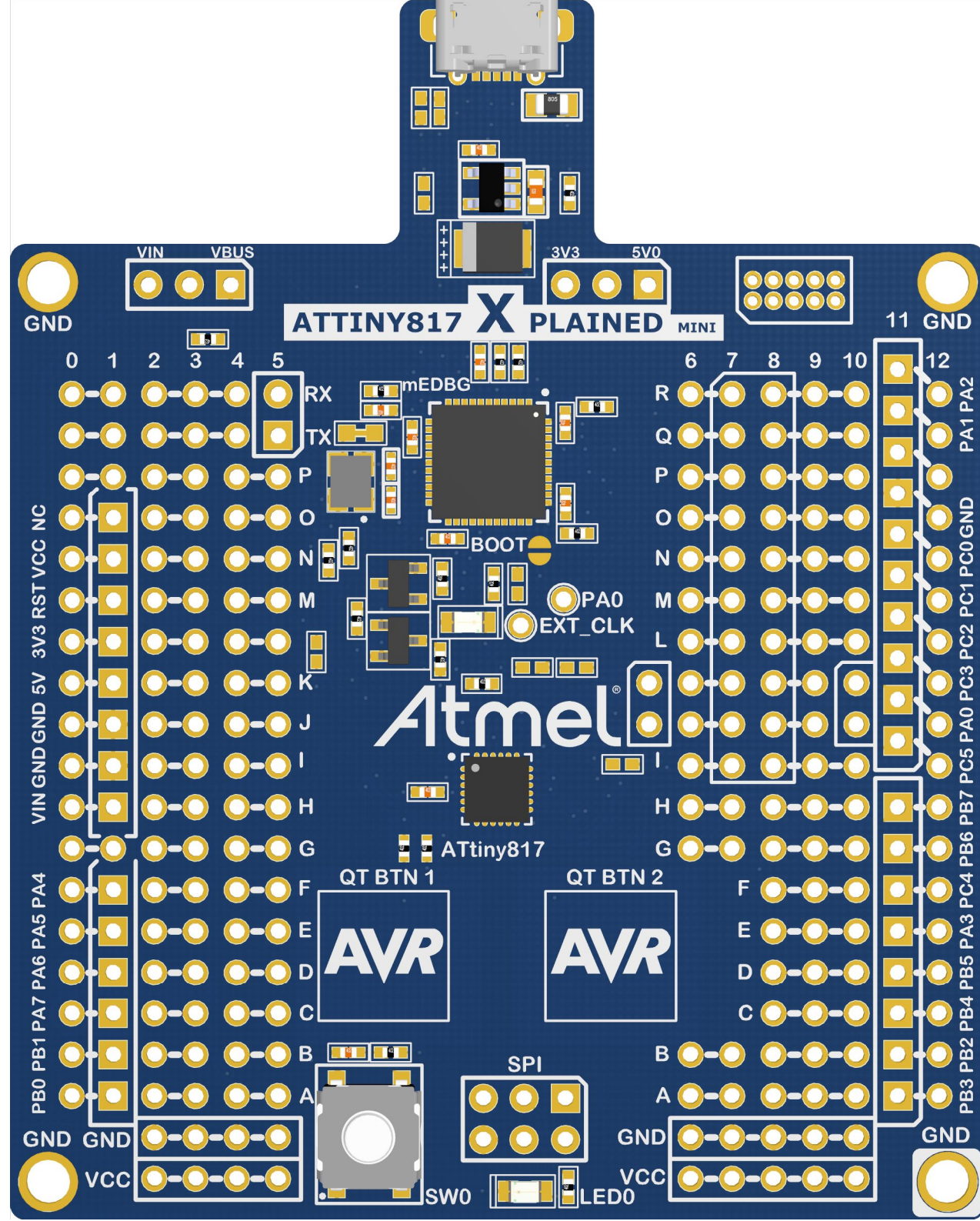
Mechanical Dimensions

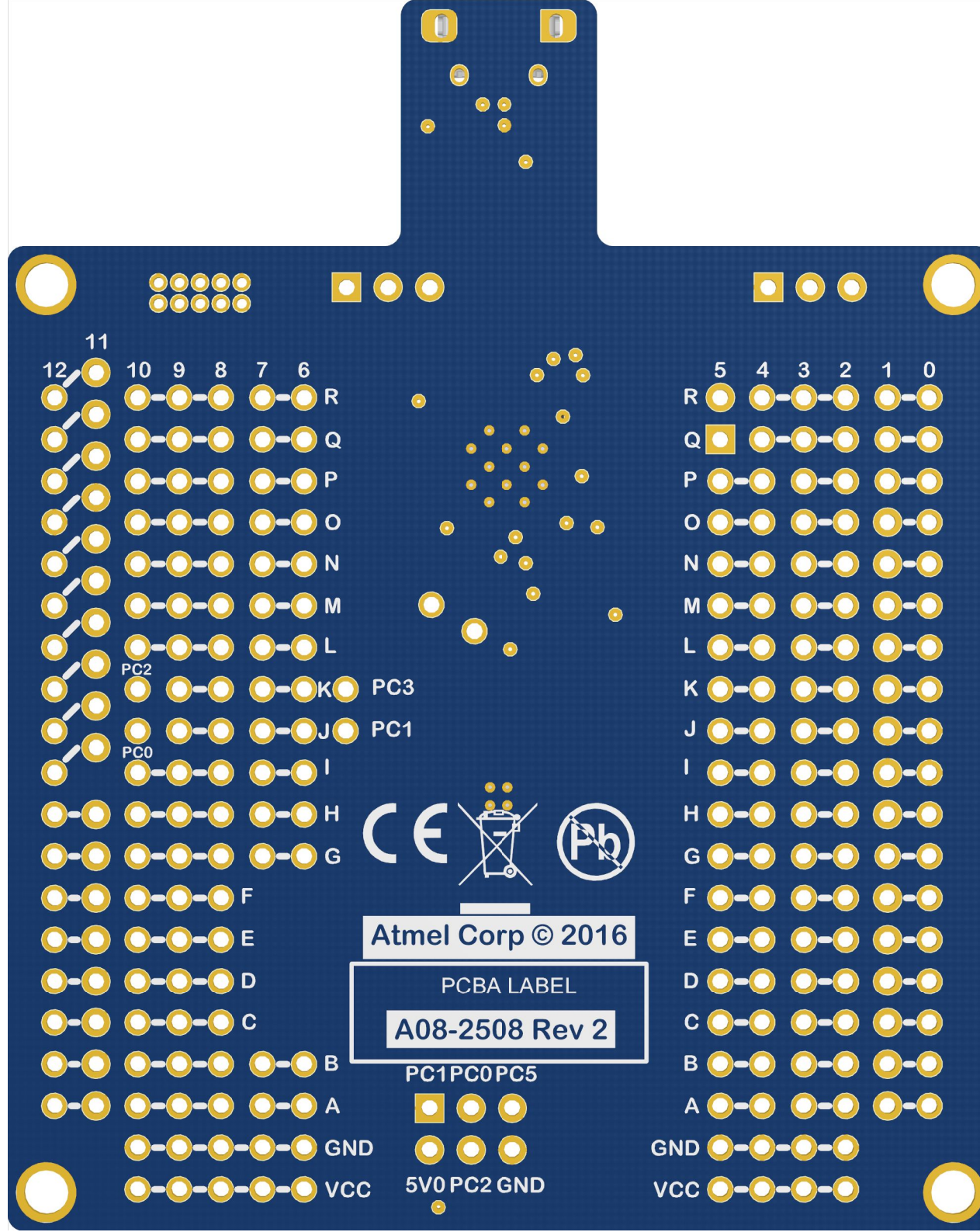


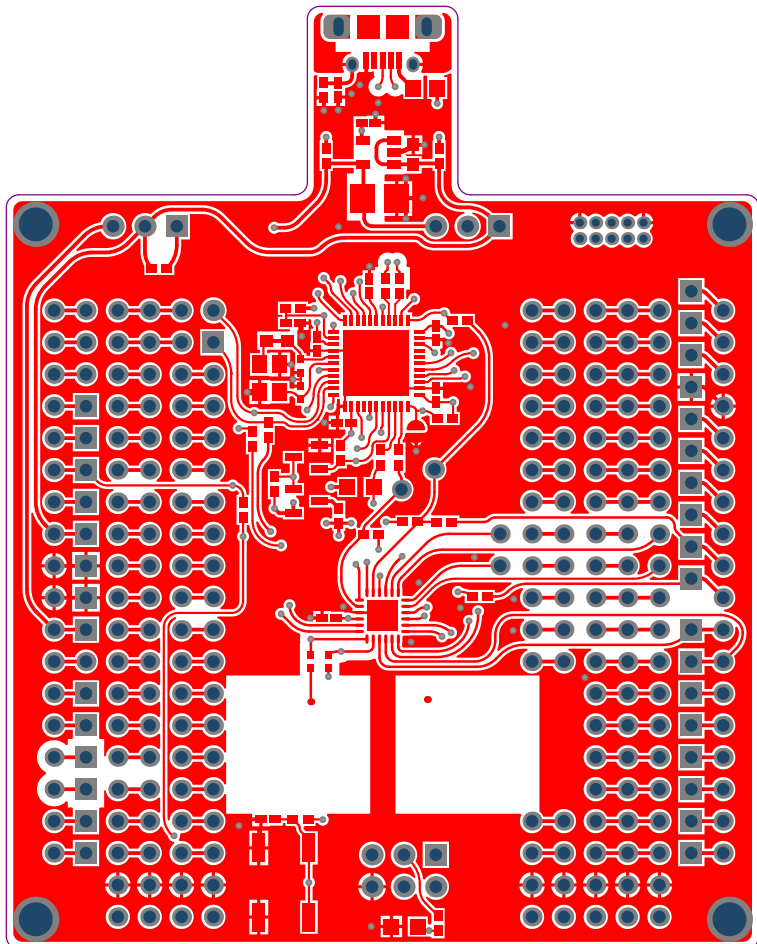


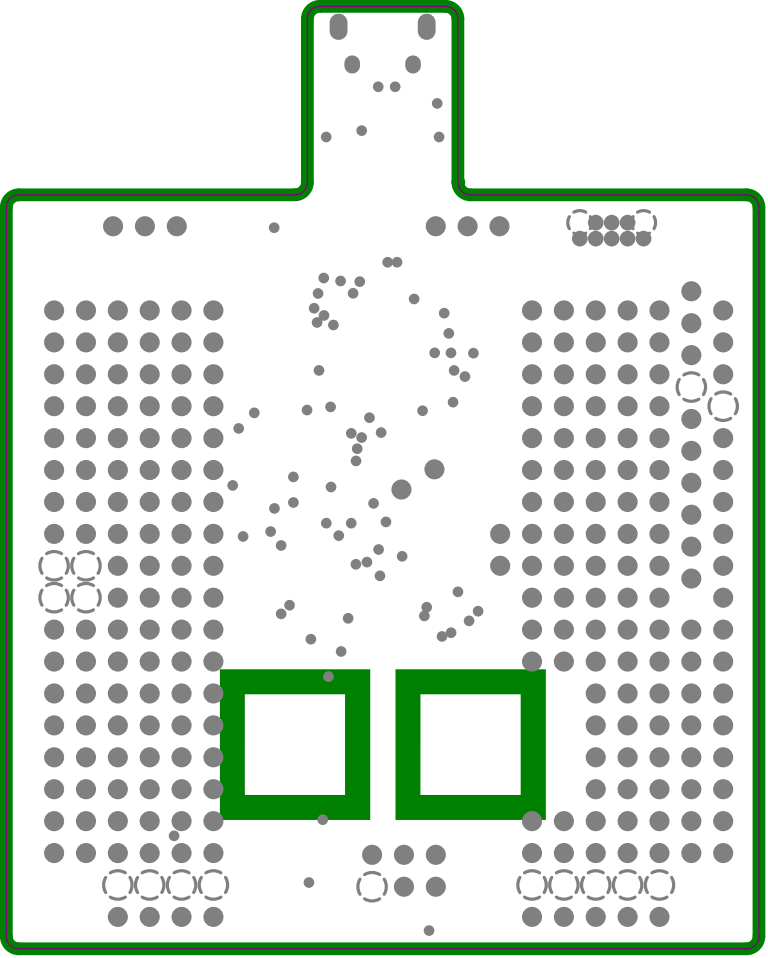


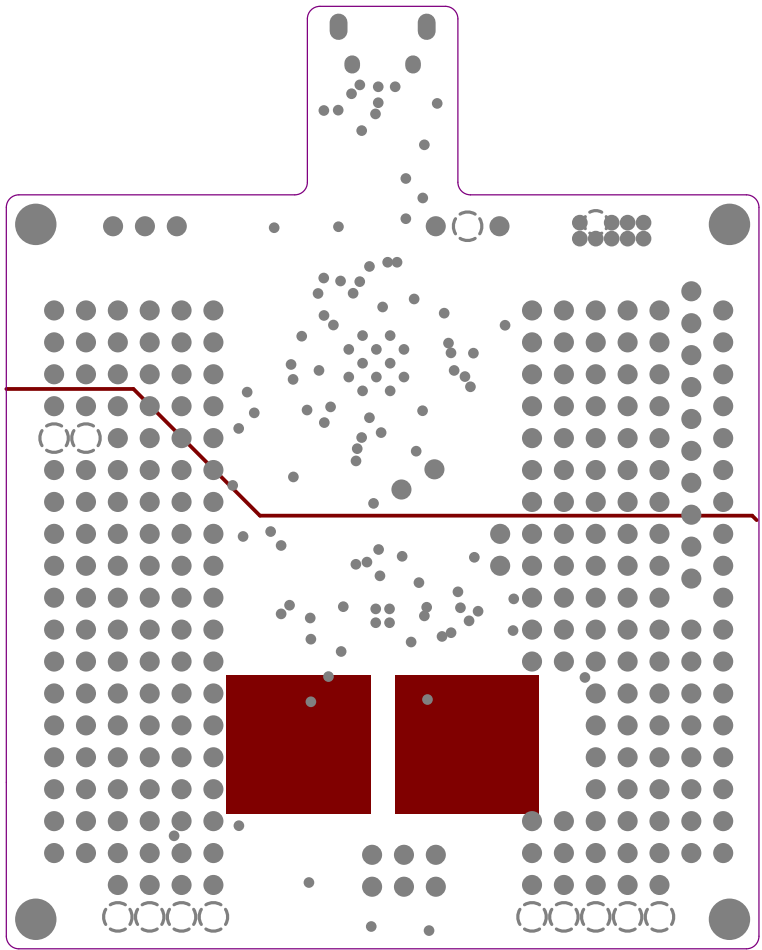
LABEL 1

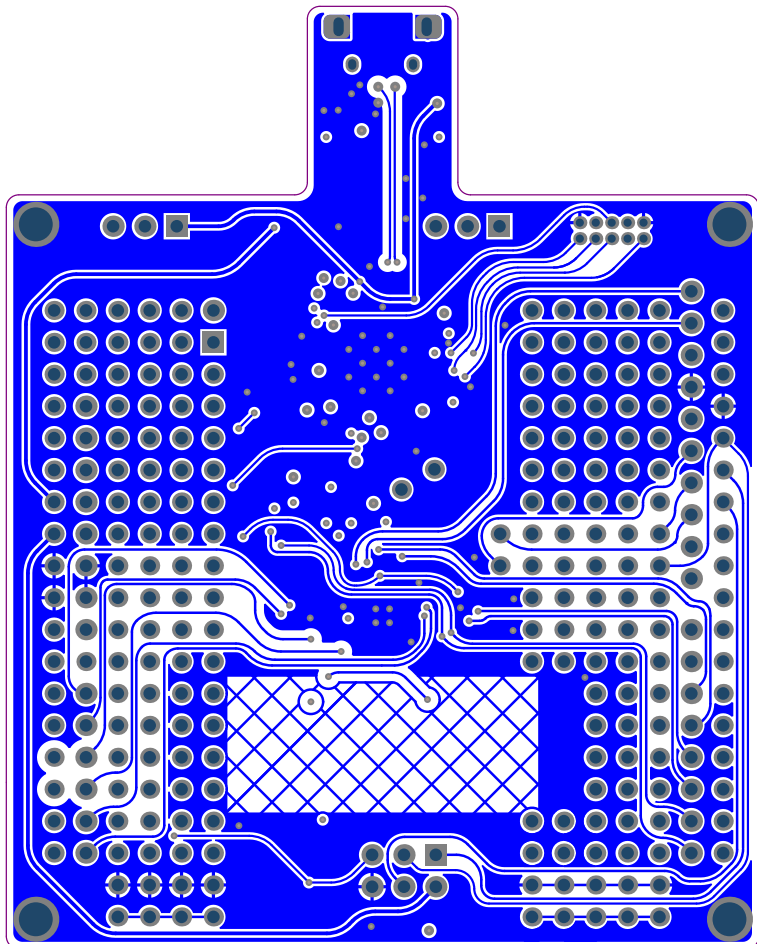












Component list

ATtiny817 Xplained Mini

Source Data From:
Project:
Variant:

ATtiny817_Xplained_Mini.PrjPCB
ATtiny817_Xplained_Mini.PrjPCB
Default_assembly



Report Date: 05.10.2016 15:35:14
Print Date: 05.10.2016 15:34:16

Fitted	Designator	Quantity	Value	Manufacturer	MPN	Description
Fitted	C100	1	10n	YAGEO CORP	C0402KR47R8B8103	Ceramic capacitor, SMD 0402, X7R, 25V, +/-10%
Fitted	C101	1	47uF6V	Kemet	T494B476M006AT	SMD tantalum capacitor, precision molded chip, ESR=0.5
Fitted	C102, C104, C105, C108, C109, C200, C201	7	100n	Kemet	C0402C104K4RACTU	Ceramic capacitor, SMD 0402, X7R, 16V, +/-10%
Fitted	C103	1	4.7uF	AVX	06032D475KA12A	Ceramic capacitor, SMD 0603, X5R, 10V, ±10 %
Fitted	C106	1	1u	Kemet	C0402C105K9PAC	Ceramic capacitor, SMD 0402, X5R, 6.3V, +/-10% (de26942)
Fitted	C110, C111	2	12pF	Kyocera-elco	CM05CG120J50AH	Ceramic capacitor, SMD 0402, NP0, 50V, +/-5% (de19819)
Fitted	D100	1	EL17-21SYGC	Everlight	EL17-21SYGC	LED, Green, Wave length=575nm, SMD 0805, ±70°
Fitted	D200	1	EL17-21UYC/A3	Everlight	17-21UYC/S530-A3/TR8	LED, Yellow, Wave length=591nm, SMD 0805, ±70°
Fitted	F100	1	MC36213	Multicomp	MC36213	Resetable PTC fuse, I _h = 0.5A, I _t = 1.0A, 0805 package
Fitted	FW1	1	MEDBG firmware			MEDBG firmware
Fitted	J104	1	ZX62D-B-5PA8	HIROSE	ZX62D-B-5PA8(30)	Micro USB B Connector, Standard SMT + DIP
Fitted	LABEL1	1	Label PCB A	ACT Logmark AS	505462	PCBA identification label PP Top White Gloss
Fitted	PCB1	1	ATtiny817 Xplained Mini PCB documentation			ATtiny807 Xplained Mini PCB documentation
Fitted	PCBADC01	1	A09-2658 PCB A Files			ATtiny807 Xplained Mini PCB A documentation
Fitted	Q100	1	IRLML6402	International Rectifier	IRLML6402PBF	P-ch. MOSFET, -30V, -3.7A continuous RDS(ON) = 0.050hm@VGS = 4.5V, RDS(ON) = 0.080hm@VGS = 2.5V
Fitted	Q101	1	2N7002.215	IXP	2N7002.215	N-Channel MOSFET, 60V, 0.300A continuous, 1.2A Peak, RDS(ON) = 3.80hm@VGS = 4.5V, VGS(th) < 2.5V
Fitted	R100, R103, R104, R202, R203	5	0R	(n/a)	RMCF0402Z70R00	RES 0.0 OHM 1/16W 0402 SMD
Fitted	R102, R105, R106, R108, R209	5	100k	ASJ	CR10-1003-FK	Thick film resistor, SMD 0402, 1/16W, 1%
Fitted	R107	1	680R	ASJ	CR10-6800-FK	Thick film resistor, SMD 0402, 1/16W, 1%
Fitted	R109, R110	2	22R	Samsung	RC100SF22R0CS	Thick film resistor, SMD 0402, 1/16W, 1% (de23607)
Fitted	R206, R207, R210	3	1k	ASJ	CR10-1001-FK	Thick film resistor, SMD 0402, 1/16W, 1%
Fitted	R213, R214	2	1k	ASJ	CR10-1001-FK	Thick film resistor, SMD 0402, 1/16W, 1%
Fitted	SW200	1	SKRAAKE010	ALPS	SKRAAKE010	6.2x6.2 mm SMD tact sw ich, same as A08-0091 but less force is needed
Fitted	TEST1	1	ATtiny817 Xplained Mini test			Fixture test for ATtiny807 Xplained Pro
Fitted	TESTDOC1	1	ATtiny817 Xplained Mini Test Instructions			ATtiny807 Xplained Mini Test Instructions
Fitted	U100	1	LP2985-33DBV	Texas Instruments	LP2985-33DBV	LDO 3.3V 150mA SOT23-5 1.5% (cer. cap)
Fitted	U101	1	ATmega32U4-MUR	ATMEL	ATmega32U4-MUR	ATmega32U4 QFN package
Fitted	U200	1	ATtiny817-MFR	ATMEL	ATTINY817-MFR	Atmel 8-bit RISC MCU
Fitted	XC100	1	16.0MHz	Epson Toyocom	TSX-3225 16.0000MF092-AC3	16MHz uXtal, 3.2 x 2.5 mm SMD, CL=9pF, 15PPM, ESR=80ohm(Max.
Not Fitted	C107	0	4.7n	PHYCOMP	2238 587 15632	Ceramic capacitor, SMD 0402, X7R, 25V, +/-10% (de35287)
Not Fitted	J100, J102	0	HMTSW-103-23-F-S-237	SAMTEC	HMTSW-103-23-F-S-237	1x3 pin header, 2.54mm pitch, Pin-in-Paste THM, 1mm hole
Not Fitted	J101	0	PIN HEADER 2x5	Garry	176-2-010-0-T-XSO-0730	2x5 pin header, 1.27mm pitch, THM
Not Fitted	J105	0	HMTSW-102-23-F-S-237	SAMTEC	HMTSW-102-23-F-S-237	1x2 pin header, 2.54mm pitch, Pin-in-Paste THM
Not Fitted	J200	0	MTSW-103-08-L-D-276	SAMTEC	MTSW-103-08-L-D-276	2x3 pin header, 2.54 mm pitch, THM
Not Fitted	J201	0	SSQ-110-21-F-S	SAMTEC	SSQ-110-21-F-S	1x10 receptacle pin header, low insertion force, 2.54mm pitch THM, Pin in Paste
Not Fitted	J202, J203	0	SSQ-108-21-F-S	SAMTEC	SSQ-108-21-F-S	1x8 receptacle pin header, low insertion force, 2.54mm pitch THM, Pin in Paste
Not Fitted	J204	0	SSQ-106-21-F-S	SAMTEC	SSQ-106-21-F-S	1x6 receptacle pin header, low insertion force, 2.54mm pitch THM
Not Fitted	R101, R200, R204, R208	0	0R	(n/a)	RMCF0402Z70R00	RES 0.0 OHM 1/16W 0402 SMD
Not Fitted	R111	0	1M	ASJ	CR10-1004-FK	Thick film resistor, SMD 0402, 1/16W, 1%
Not Fitted	R201	0	3.3k	ASJ	CR10-3301-FK	Thick film resistor, SMD 0402, 1/16W, 1%
Not Fitted	R205	0	330R	ASJ	CR10-3300-FK	Thick film resistor, SMD 0402, 1/16W, 1%

Approved

Notes