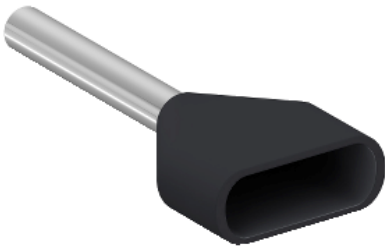


# Product data sheet

Specifications



Cable end, Linergy TR cable ends, twin conductor, black, 1.5mm², for insulated cable, medium size, 5 sets of 50

AZ5DE015

## Main

Range of product	Linergy
Product or component type	Cable end
Cable end size	Medium
Standards	NF C 63-023
Type of packing	Dispenser pack
Quantity per set	5 sets of 100
Cable cross section	1.5 mm²

## Complementary

Cable end type	Twin conductor
Additional information	Without marker tag holder
Colour	Black
Bezel material	Halogen-free plastic
Tube material	Copper conforming to ISO 1337
Number of cables	2
AWG gauge	AWG 16
Bezel size	Ø 3.6 x 6.6 mm
Tube diameter	2.5 mm
Length	15 mm
Tube length	8 mm
Product weight	0.155 kg

## Environment

Product certifications	cCSAus
Ambient air temperature for operation	-20...105 °C

## Packing Units

Unit Type of Package 1	PCE
Number of Units in Package 1	1

Package 1 Height	0.500 cm
Package 1 Width	0.800 cm
Package 1 Length	1.600 cm
Package 1 Weight	0.300 g
Unit Type of Package 2	BB1
Number of Units in Package 2	500
Package 2 Height	13.000 cm
Package 2 Width	7.000 cm
Package 2 Length	12.500 cm
Package 2 Weight	151.000 g
Unit Type of Package 3	S04
Number of Units in Package 3	20000
Package 3 Height	30.000 cm
Package 3 Width	40.000 cm
Package 3 Length	60.000 cm
Package 3 Weight	7.164 kg

Offer Sustainability

Sustainable offer status	Green Premium product
REACH Regulation	<a href="#">REACH Declaration</a>
REACH free of SVHC	Yes
EU RoHS Directive	Pro-active compliance (Product out of EU RoHS legal scope) <a href="#">EU RoHS Declaration</a>
Toxic heavy metal free	Yes
Mercury free	Yes
China RoHS Regulation	<a href="#">China RoHS declaration</a> Pro-active China RoHS declaration (out of China RoHS legal scope)
RoHS exemption information	<a href="#">Yes</a>
Environmental Disclosure	<a href="#">Product Environmental Profile</a>
PVC free	Yes
Halogen content performance	Halogen free plastic parts product

Contractual warranty

Warranty	18 months
----------	-----------

Recommended replacement(s)