

# Product data sheet

Specifications



soft starter for asynchronous motor,  
Altistart 48, 1170A, 208..690V,  
250..900kW

ATS48M12Y

⚠ Discontinued on: 02 May 2023

⚠ To be end-of-service on: 31 December 2030

⚠ Discontinued - Service only

## Main

Range of product	Altistart 48
Product or component type	Soft starter
Product destination	Asynchronous motors
Product specific application	Heavy duty industry and pumps
Device short name	ATS48
Utilisation category	AC-53A
Ue power supply voltage	208...690 V - 15...10 %
Power supply frequency	50...60 Hz - 5...5 %
Motor power kW	250 kW at 230 V for severe applications 355 kW at 230 V for standard applications 500 kW at 400 V for severe applications 630 kW at 400 V for standard applications 630 kW at 440 V for severe applications 630 kW at 500 V for severe applications 630 kW at 525 V for severe applications 710 kW at 440 V for standard applications 800 kW at 500 V for standard applications 800 kW at 525 V for standard applications 900 kW at 660 V for severe applications 900 kW at 690 V for severe applications
Motor power hp	1000 hp at 460 V for standard applications 1000 hp at 575 V for severe applications 1200 hp at 575 V for standard applications 350 hp at 208 V for severe applications 350 hp at 230 V for severe applications 400 hp at 208 V for standard applications 450 hp at 230 V for standard applications 800 hp at 460 V for severe applications

## Complementary

Device connection	In the motor supply line
Protection type	Phase failure: line Thermal protection: motor Thermal protection: starter
Standards	EN/IEC 60947-4-2
Product certifications	GOST CSA C-Tick UL TCF NOM 117 DNV CCC

	SEPRO
Marking	CE
Discrete input number	5
Discrete input type	PTC, 750 Ohm at 25 °C (Stop, Run, LI3, LI4) logic, <= 8 mA 4300 Ohm
Discrete input logic	Positive logic Stop, Run, LI3, LI4 at State 0: < 5 V and <= 2 mA at State 1: > 11 V, >= 5 mA
Minimum switching current	10 mA at 6 V DC for relay outputs
Discrete output number	2
Discrete output type	(LO1) logic output 0 V common configurable (LO2) logic output 0 V common configurable (R1) relay outputs fault relay NO (R2) relay outputs end of starting relay NO (R3) relay outputs motor powered NO
Analogue output type	Current output AO: 0-20 mA or 4-20 mA, impedance <500 Ohm
Communication port protocol	Modbus
Connector type	1 RJ45
Communication data link	Serial
Physical interface	RS485 multidrop
Transmission rate	4800, 9600 or 19200 bps
Function available	External bypass (optional)
Operating position	Vertical +/- 10 degree
Height	890 mm
Width	770 mm
Depth	315 mm
Product weight	115 kg

## Environment

Electromagnetic compatibility	Conducted and radiated emissions level A conforming to IEC 60947-4-2 Damped oscillating waves level 3 conforming to IEC 61000-4-12 Electrostatic discharge level 3 conforming to IEC 61000-4-2 Immunity to electrical transients level 4 conforming to IEC 61000-4-4 Immunity to radiated radio-electrical interference level 3 conforming to IEC 61000-4-3 Voltage/current impulse level 3 conforming to IEC 61000-4-5
Relative humidity	0...95 % without condensation or dripping water conforming to EN/IEC 60068-2-3
Ambient air temperature for operation	40...60 °C (with current derating of 2 % per °C) -10...40 °C (without derating)
Ambient air temperature for storage	-25...70 °C
Operating altitude	<= 1000 m without derating > 1000...2000 m with current derating of 2.2 % per additional 100 m

## Packing Units

Unit Type of Package 1	PCE
Number of Units in Package 1	1
Package 1 Height	62.0 cm
Package 1 Width	183.0 cm
Package 1 Length	90.0 cm
Package 1 Weight	176.0 kg

## Offer Sustainability

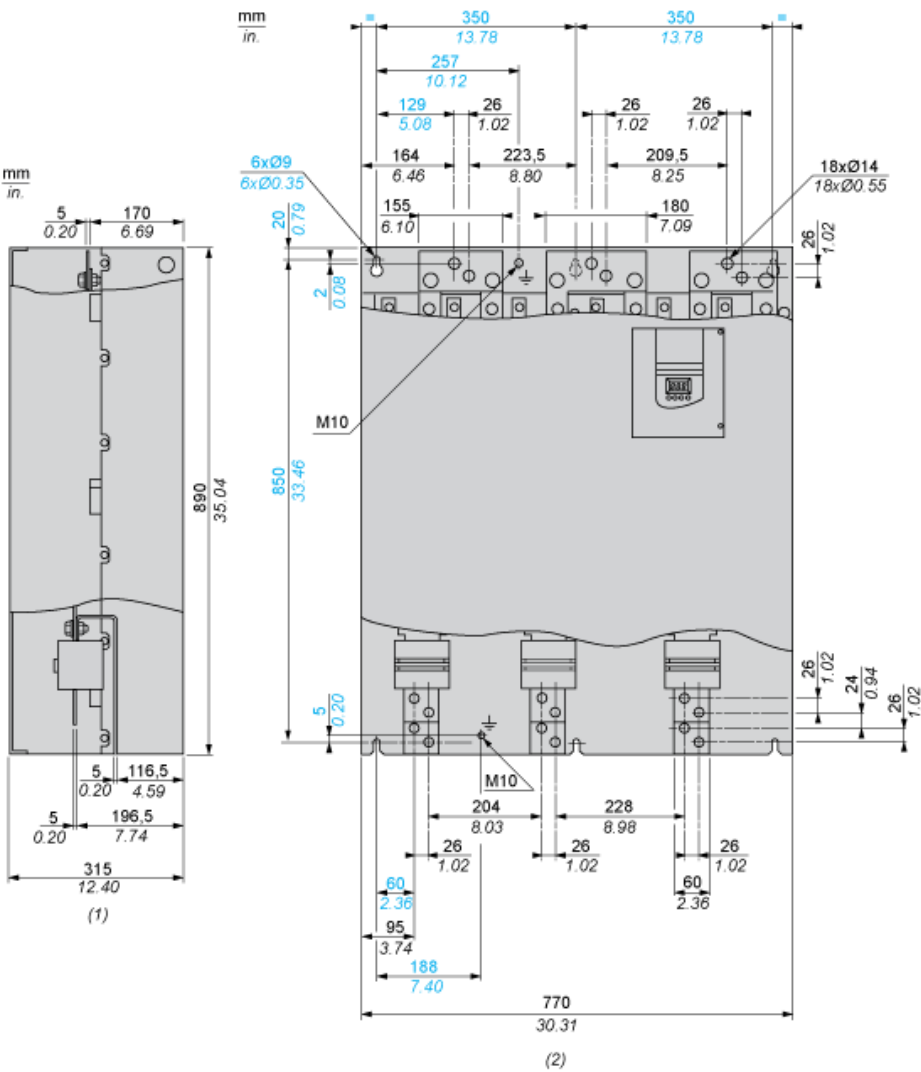
Sustainable offer status	Green Premium product
--------------------------	-----------------------

REACH Regulation	<a href="#">REACH Declaration</a>
EU RoHS Directive	Pro-active compliance (Product out of EU RoHS legal scope) <a href="#">EU RoHS Declaration</a>
Mercury free	Yes
China RoHS Regulation	<a href="#">China RoHS declaration</a>
RoHS exemption information	<a href="#">Yes</a>
Environmental Disclosure	<a href="#">Product Environmental Profile</a>
Circularity Profile	<a href="#">End of Life Information</a>
WEEE	The product must be disposed on European Union markets following specific waste collection and never end up in rubbish bins
California proposition 65	WARNING: This product can expose you to chemicals including: Lead and lead compounds, which is known to the State of California to cause cancer and birth defects or other reproductive harm. For more information go to <a href="http://www.P65Warnings.ca.gov">www.P65Warnings.ca.gov</a>

### Contractual warranty

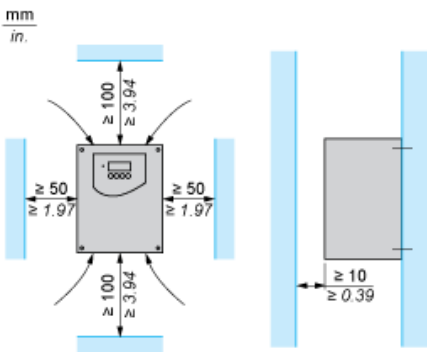
Warranty	18 months
----------	-----------

Dimensions



(1) Right View  
(2) Front View

Clearance



Recommended replacement(s)

ATS48M12Y is replaced by:

1x



soft starter, Altistart 480, 1200A, 208...690V AC, control supply 110...230V AC

ATS480M12Y