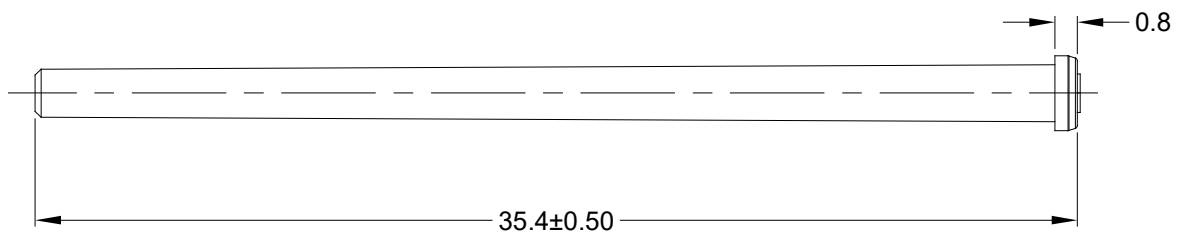
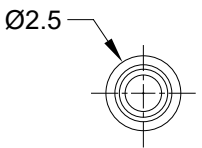
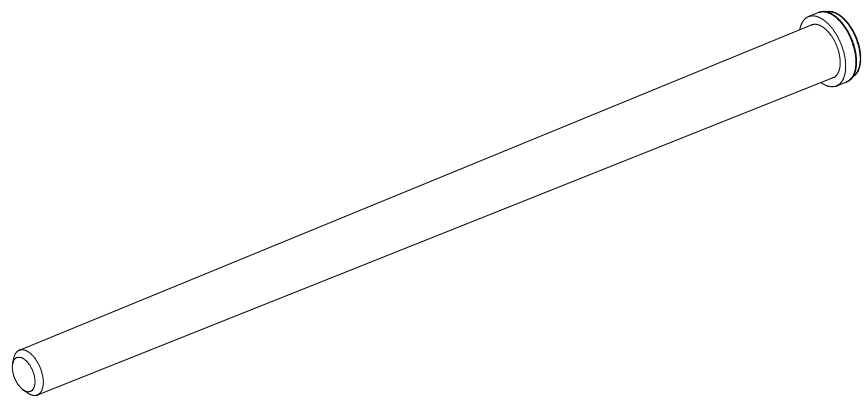


REVISIONS					
REV	ECO	DESCRIPTION	DATE	BY	APPR
A1	--	RELEASE NUMBER	20APR20	BROOK	TOMMY



NOTES: UNLESS OTHERWISE SPECIFIED

1. MATERIAL: THERMOPLASTIC; RoHS COMPLIANT
2. COLOR: BLUE
3. FIT A SERIES CONNECTOR SIZE 20 CONTACT
4. FOR LOCK FUNCTION, INSERT LARGE END FIRST.
5. ALL DIMENSIONS ARE FOR REFERENCE USE ONLY.

ATM13-217-2005-SR				
PART NUMBER		DESCRIPTION		ITEM
QUANTITY	MATERIALS LIST			
<small>UNLESS OTHERWISE SPECIFIED</small> 1) All dimensions are in metric(mm). 2) Tolerances are as follows: 1 PL DEC ±0.30 2 PL DEC ±0.15 3 PL DEC ±0.08 Fractions ±1/64 Angles ±1° 3) Note reference =	SIGNATURES		DATE	
	DRAWN: BROOK.DING		20APR20	
	CHECKED: ORION.LI		21APR20	
	ENGINEER:			
APPROVAL: TOMMY.XIE		22APR20		
MATERIAL SPECIFICATIONS:		CUSTOMER:		
PROCESS SPECIFICATIONS:		THIS DRAWING IS SUPPLIED FOR INFORMATION ONLY. DESIGN FEATURES, SPECIFICATIONS AND PERFORMANCE DATA SHOWN HEREON ARE THE PROPERTY OF THE AMPHENOL CORPORATION. NO RIGHTS OF REPRODUCTION ARE IMPLIED. ALL DIMENSIONS ARE SUBJECT TO NORMAL MANUFACTURING VARIATIONS.		
NEXT ASSY:				
		Sine Systems - www.amphenol-sine.com 44724 Morley Drive Clinton Township, MI 48036		
		LOCKING SEALING PLUG, SIZE 20, BLUE		
SIZE	TYPE	DWG NO:	REVISION	
A	C-	ATM13-217-2005-SR	A1	
SCALE: NONE		SHEET 1 OF 1		