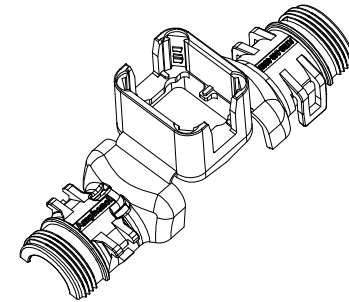
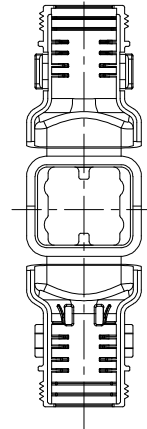
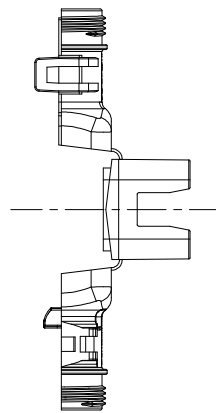
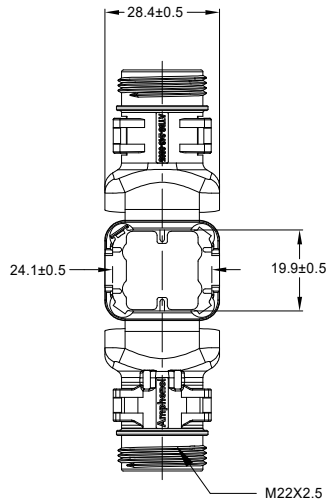
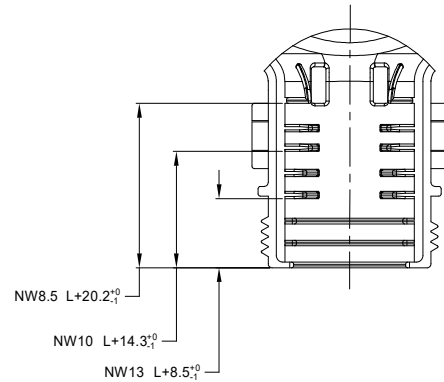
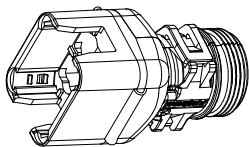
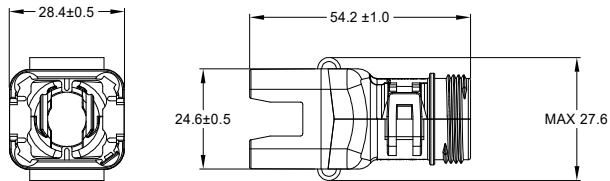


REVISIONS					
REV	ECO	DESCRIPTION	DATE	BY	APPR
A1	-	RELEASE DRAWING	18/MAY/22	ZENIN	TOMMY



CLOSED (MOUNTED) CONDITION AS SHOWN



L+ =ADD LENGTH FOR CORRUGATED TUBE

SCALE 2:1

NOTES: UNLESS OTHERWISE SPECIFIED

1. MATERIAL: SHELL: PA66; COLOR: BLACK  
LOCKING SHEET: SUS
2. USE WITH AT06-08S\*-XXX, \*=ALL KEYS,XXX= ALL COLORS
3. CABLE EXIT DESIGNED FOR CORRUGATED TUBE NW 8.5,10 AND 13.
4. RoHS COMPLIANT
5. ALL DIMENSIONS ARE FOR REFERENCE USE ONLY.

ATBS-243-0805		REF:1011-243-0805	
QUANTITY	PART NUMBER	DESCRIPTION	ITEM
<b>MATERIALS LIST</b>			
<b>UNLESS OTHERWISE SPECIFIED</b> 1) All dimensions are in metric(mm). 2) Tolerances are as follows: 1 PL DEC ±0.30 2 PL DEC ±0.15 3 PL DEC ±0.08 3) Note reference =		<b>SIGNATURES</b> DRAWN: ZHENLDENG CHECKED: ORIONLI ENGINEER: APPROVAL: TOMMYXIE CUSTOMER:	<b>DATE</b> 18/MAY/22 18/MAY/22 19/MAY/22
MATERIAL SPECIFICATIONS:  WEIGHT: 11.0g  PROCESS SPECIFICATIONS:  NEXT ASSY:		 Sine Systems - www.amphenol-sine.com 44724 Morley Drive Clinton Township, MI 48036  <b>BACKSHELL,8 POSITION,AT SERIES          STRAIGHT (180 DEGREE)</b>	
THIS DRAWING IS SUPPLIED FOR INFORMATION ONLY. DESIGN FEATURES, SPECIFICATIONS AND PERFORMANCE DATA SHOWN HEREON ARE THE PROPERTY OF THE AMPHENOL CORPORATION. NO RIGHTS OF REPRODUCTION ARE IMPLIED. ALL DIMENSIONS ARE SUBJECT TO NORMAL MANUFACTURING VARIATIONS.		<b>SIZE</b> B C-	<b>REVISION</b> A1
SCALE: NONE		DWG NO: <b>ATBS-243-0805</b>	SHEET 1 OF 1

TITLE: BACKSHELL COVER AT 8POS STRAIGHT (180 DEGREE)  
 DWG NO: ATBS-243-0805  
 REV: A1  
 SH: 1  
 OF: 1