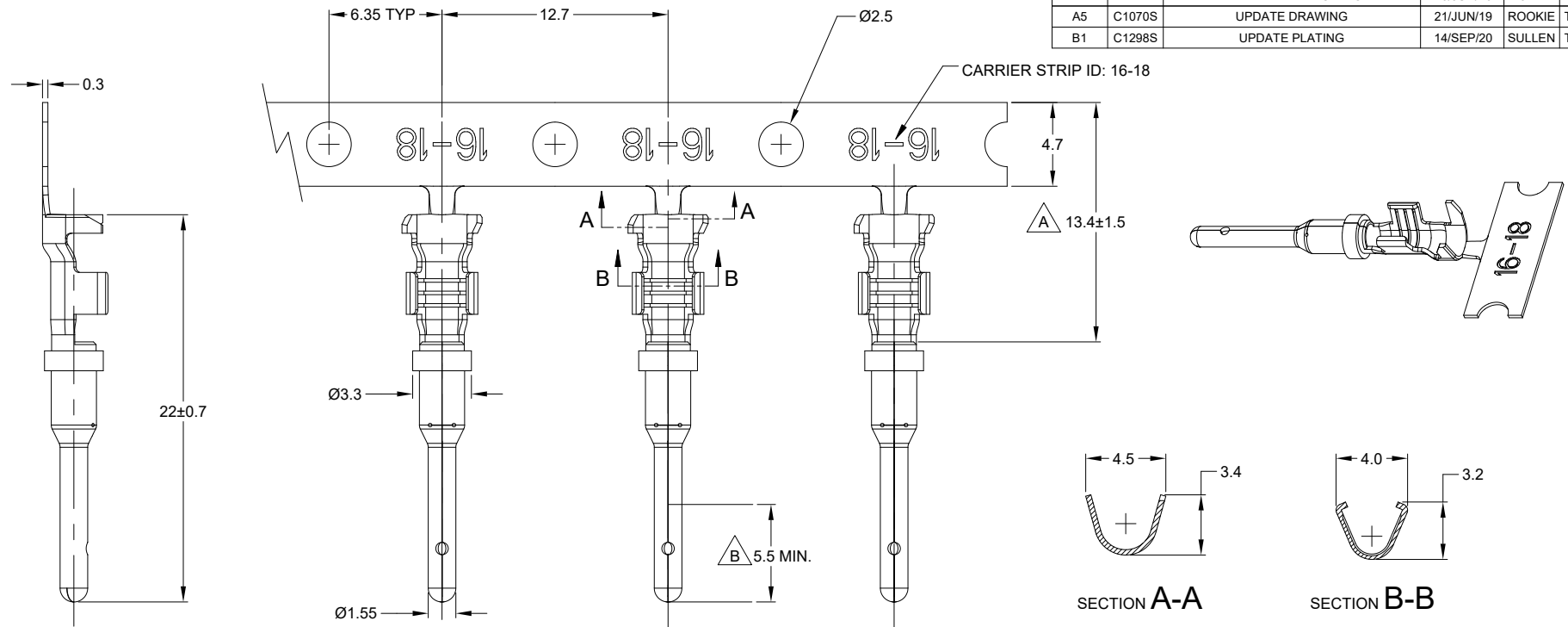


| REVISIONS | | | | | |
|-----------|--------|------------------------|-----------|--------|-------|
| REV | ECO | DESCRIPTION | DATE | BY | APPR |
| A3 | - | RELEASE NEW DWG FORMAT | 21OCT13 | DRP | - |
| A4 | - | REVISED PLATING INFO | 16/JUN/16 | JAH | - |
| A5 | C1070S | UPDATE DRAWING | 21/JUN/19 | ROOKIE | TOMMY |
| B1 | C1298S | UPDATE PLATING | 14/SEP/20 | SULLEN | TOMMY |



NOTES: UNLESS OTHERWISE SPECIFIED

- MATERIAL: COPPER ALLOY
- PLATING: SEE PART NUMBER CHART
- CONTACT SIZE: 16
- SPECIFICATIONS:
 - CURRENT RATING: 13 AMPS
 - CONTACT MILLIVOLT DROP: 100 MILLIVOLT DROP @ 13 AMP TEST CURRENT.
 - RoHS COMPLIANT
- RECOMMENDED WIRE RANGE: 16 - 18 AWG (1.5 - 0.75mm²)
CUSTOMER OPTIONAL WIRE RANGE: 14 AWG (2.0mm²)
RECOMMENDED INSUL O.D.: 1.91 - 3.55MM (0.075 - 0.140INCH)
- PACKAGE: 4000 PCS/REEL
- AVAILABLE APPLICATORS: MFX-3953-K OR MFX-3953-G
- ALL DIMENSIONS ARE FOR REFERENCE USE ONLY

| PART NUMBER CHART | | |
|-------------------|--------------|---|
| PLATING | PART NUMBER | PLATING DESCRIPTION |
| NICKEL | AT60-16-0122 | SELECTIVE TIN OVER NICKEL OVERALL IN Δ ZONE |
| GOLD | AT60-16-0144 | SELECTIVE GOLD FLASH OVER NICKEL OVERALL IN ∇ ZONE OR ENTIRE CONTACT |
| TIN | AT60-16-0177 | TIN OVER NICKEL OVERALL |

| SEE PART NUMBER CHART | | REF: 1060-16-0144, 1060-16-0122, 1060-16-0177 | | | | | | | | | | | | | |
|---|--|--|----------|------------|---------|--------------------|-----------|-----------------|--------------|-----------|--|---------------------|-----------|-----------|--|
| PART NUMBER | | DESCRIPTION | | | | | | | | | | | | | |
| QUANTITY | MATERIALS LIST | | | | | | | | | | | | | | |
| UNLESS OTHERWISE SPECIFIED 1) All dimensions are in metric (mm). 2) Tolerances are as follows: 1 PL DEC ±0.30 2 PL DEC ±0.15 3 PL DEC ±0.08 Fractions ±1/64 Angles ±1° 3) Note reference = Δ | | <table border="1"> <thead> <tr> <th>SIGNATURES</th> <th>DATE</th> </tr> </thead> <tbody> <tr> <td>DRAWN: SULLENZHANG</td> <td>14/SEP/20</td> </tr> <tr> <td>CHECKED: ORONLI</td> <td>15/SEP/20</td> </tr> <tr> <td>ENGINEER:</td> <td></td> </tr> <tr> <td>APPROVAL: TOMMY XIE</td> <td>18/SEP/20</td> </tr> <tr> <td>CUSTOMER:</td> <td></td> </tr> </tbody> </table> | | SIGNATURES | DATE | DRAWN: SULLENZHANG | 14/SEP/20 | CHECKED: ORONLI | 15/SEP/20 | ENGINEER: | | APPROVAL: TOMMY XIE | 18/SEP/20 | CUSTOMER: | |
| SIGNATURES | DATE | | | | | | | | | | | | | | |
| DRAWN: SULLENZHANG | 14/SEP/20 | | | | | | | | | | | | | | |
| CHECKED: ORONLI | 15/SEP/20 | | | | | | | | | | | | | | |
| ENGINEER: | | | | | | | | | | | | | | | |
| APPROVAL: TOMMY XIE | 18/SEP/20 | | | | | | | | | | | | | | |
| CUSTOMER: | | | | | | | | | | | | | | | |
| MATERIAL SPECIFICATIONS: | | <p>Amphenol</p> <p>Sine Systems - www.amphenol-sine.com 44724 Morley Drive Clinton Township, MI 48036</p> | | | | | | | | | | | | | |
| PROCESS SPECIFICATIONS: | | CONTACT, PIN, STAMPED, SIZE 16, 16-18 AWG, A SERIES | | | | | | | | | | | | | |
| NEXT ASSY: | THIS DRAWING IS SUPPLIED FOR INFORMATION ONLY. DESIGN FEATURES, SPECIFICATIONS AND PERFORMANCE DATA SHOWN HEREON ARE THE PROPERTY OF THE AMPHENOL CORPORATION. NO RIGHTS OF REPRODUCTION ARE IMPLIED. ALL DIMENSIONS ARE SUBJECT TO NORMAL MANUFACTURING VARIATIONS. | <table border="1"> <tr> <th>SIZE</th> <th>TYPE</th> <th>DWG NO.</th> <th>REVISION</th> </tr> <tr> <td>B</td> <td>C-</td> <td>AT60-16-01XX</td> <td>B1</td> </tr> </table> | SIZE | TYPE | DWG NO. | REVISION | B | C- | AT60-16-01XX | B1 | | | | | |
| SIZE | TYPE | DWG NO. | REVISION | | | | | | | | | | | | |
| B | C- | AT60-16-01XX | B1 | | | | | | | | | | | | |
| SCALE: NONE | | SHEET 1 OF 1 | | | | | | | | | | | | | |

TITLE: PIN, STAMPED, SIZE 16, 16-18 AWG, A SERIES
DWG NO: AT60-16-01XX
REV: B1
SH: 1
OF: 1