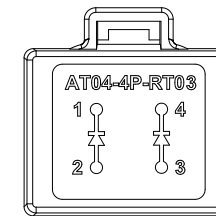
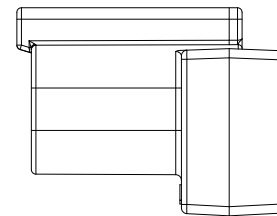
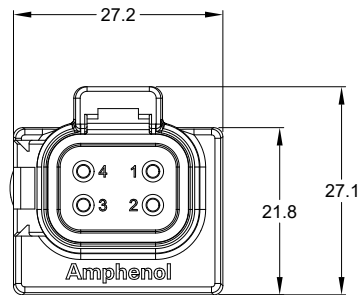
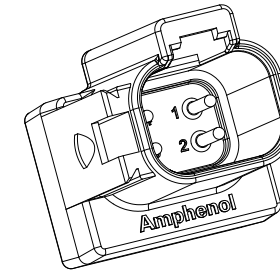
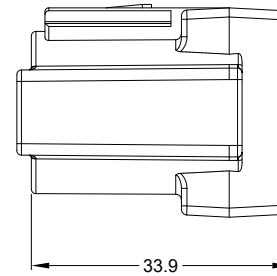


| REVISIONS | | | | | |
|-----------|-----|----------------------------|---------|--------|-------|
| REV | ECO | DESCRIPTION | DATE | BY | APPR |
| A1 | - | RELEASE | 14MAY19 | SULLEN | TOMMY |
| A2 | - | UPDATE MOISTURE RESISTANCE | 14MAY21 | SULLEN | TOMMY |

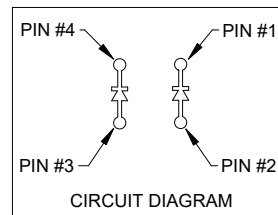


NOTES: UNLESS OTHERWISE SPECIFIED

- MATERIAL:
HOUSING: THERMOPLASTIC, GRAY
CONTACT: COPPER ALLOY
CONTACT PLATING: NICKEL PLATED

- MODIFICATIONS: DIODE

- SPECIFICATIONS:
 - DIODE P/N: MUR460G
 - PEAK REVERSE VOLTAGE: 600.0 V MAX.
 - PEAK FORWARD VOLTAGE: 1.28 V MAX.
 - AVERAGE FORWARD CURRENT: 4.0 A MAX.
 - OPERATING TEMPERATURE: -55°C TO +125°C
 - MOISTURE RESISTANCE:
IP68(1M OF WATER FOR A PERIOD OF 24 HOURS, MATED CONDITION)
IP69K(MATED CONDITION)
 - MATING CYCLE DURABILITY: 100 CYCLES
 - RoHS COMPLIANT



- MATING PART: AT06-4S*
(* = ALL MODIFICATIONS)

- ALL DIMENSIONS ARE FOR REFERENCE USE ONLY

| | | | | | |
|--------------------------------------|--|--|--|---|--|
| AT04-4P-RT03 | | REF: DT04-4P-RT03 | | | |
| PART NUMBER | | DESCRIPTION | | ITEM | |
| QUANTITY | | MATERIALS LIST | | | |
| UNLESS OTHERWISE SPECIFIED | | SIGNATURES | | DATE | |
| 1) All dimensions are in metric(mm). | | DRAWN: SULENZHANG | | 14MAY21 | |
| 2) Tolerances are as follows: | | CHECKED: ORIONLI | | 15MAY21 | |
| 1 PL DEC ±0.30 | | ENGINEER: | | | |
| 2 PL DEC ±0.15 | | APPROVAL: TOMMY.XIE | | 17MAY21 | |
| 3 PL DEC ±0.08 | | CUSTOMER: | | | |
| 3) Note reference = | | THIS DRAWING IS SUPPLIED FOR INFORMATION ONLY. DESIGN FEATURES, SPECIFICATIONS AND PERFORMANCE DATA SHOWN HEREON ARE THE PROPERTY OF THE AMPHENOL CORPORATION. NO RIGHTS OF REPRODUCTION ARE IMPLIED. ALL DIMENSIONS ARE SUBJECT TO NORMAL MANUFACTURING VARIATIONS. | | | |
| MATERIAL SPECIFICATIONS: | | SIZE | | TYPE | |
| PROCESS SPECIFICATIONS: | | B | | C- | |
| NEXT ASSY: | | SCALE | | NONE | |
| | | DWG NO. | | REVISION | |
| | | AT04-4P-RT03 | | A2 | |
| | | SINE SYSTEMS - www.amphenol-sine.com 44724 Morley Drive Clinton Township, MI 48036 | | RECEPTACLE 4PIN, TERMINATOR, AT SERIES | |
| | | SHEET | | 1 OF 1 | |

TITLE: RECEPTACLE 4PIN, TERMINATOR, AT SERIES
DWG NO: AT04-4P-RT03
REV: A2
SH: 1
OF: 1