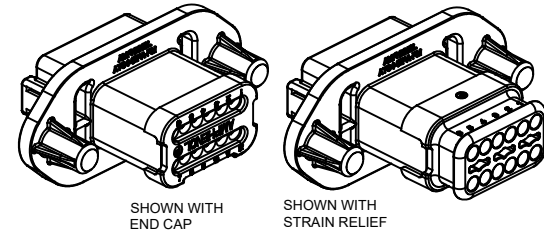
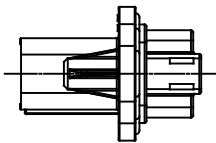
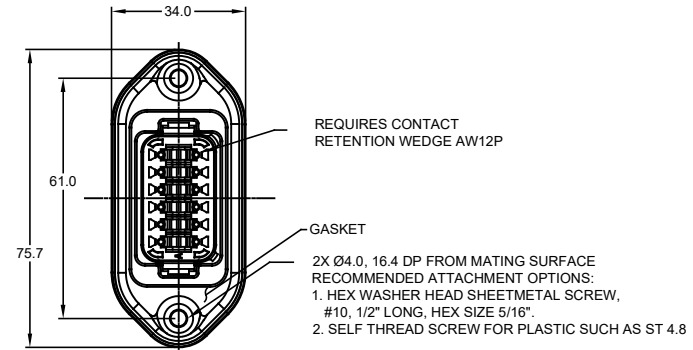
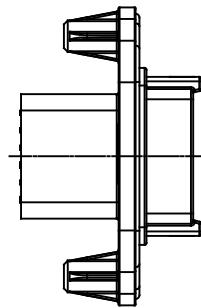
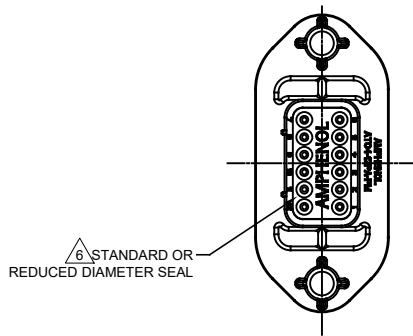


REVISIONS

| REV | ECO | DESCRIPTION  | DATE    | BY    | APPR  |
|-----|-----|--|---------|-------|-------|
| A1  | -   | RELEASE  | 14JUL15 | JAH   |       |
| A2  | -   | UPDATE   | 27OCT15 | JARRY | TOMMY |
| A3  | -   | ADDED -15 & -16 OPTIONS<br>ADDED COLORS TO NOTE #1 | 23MAR18 | JAH   |       |
| A4  | -   | CORRECTED DIMS                                     | 01OCT18 | JAH   |       |



MOUNTING PLATE SIZE



NOTES: UNLESS OTHERWISE SPECIFIED

- MATERIAL:  
HOUSING: THERMOPLASTIC; COLOR: PER KEY OPTION  
END CAP: THERMOPLASTIC; COLOR: BLACK  
STRAIN RELIEF CAP: THERMOPLASTIC; COLOR: BLACK  
SEALS: SILICONE RUBBER; COLOR: RED
- MODIFICATIONS: FLANGE, GASKET, END CAP (OPT), STRAIN RELIEF CAP (OPT), REDUCED DIAMETER SEAL (OPT).
- SPECIFICATIONS:  
3.1 CURRENT RATING: 13 AMPS  
3.2 OPERATING TEMPERATURE: -55°C TO +125°C  
3.3 DIELECTRIC WITHSTANDING VOLTAGE: LESS THAN 2 MILLIAMPS CURRENT LEAKAGE @ 1500 VOLTS AC.  
3.4 INSULATION RESISTANCE: 1000 MEGOHMS MIN @ 25°C.  
3.5 MOISTURE RESISTANCE: IP67 ( MATED CONDITION )  
3.6 MATING CYCLE DURABILITY: 100 CYCLES  
3.7 ROHS COMPLIANT
- MATING PART: AT06-12SX\* PLUG  
( X = A,B,C,D KEYS; \* = MODIFICATIONS AND COLORS )
- ALL DIMENSIONS ARE FOR REFERENCE USE ONLY.

CONTACT SIZE AND REAR SEAL WIRE RANGE

REDUCED DIAMETER SEAL:

| CONTACT SIZE | MIN. INSUL O.D.   | MAX. INSUL O.D.   | TYPICAL WIRE RANGE |
|--------------|-------------------|-------------------|--------------------|
| 16           | 1.35 mm (.053 in) | 3.05 mm (.120 in) | 14 - 20 AWG        |

STANDARD SEAL:

| CONTACT SIZE | MIN. INSUL O.D.   | MAX. INSUL O.D.   | TYPICAL WIRE RANGE |
|--------------|-------------------|-------------------|--------------------|
| 16           | 2.24 mm (.088 in) | 3.68 mm (.145 in) | 14 - 20 AWG        |

| SEE SHEET 2 FOR KEYS   |  | PART NUMBER    |  | DESCRIPTION    |  | ITEM  |
|--|--|----------------|--|----------------|--|---|
| QUANTITY   |  | MATERIALS LIST |  |                |  |   |
| UNLESS OTHERWISE SPECIFIED:<br>1) All dimensions are in metric.(mm).<br>2) Tolerances are as follows:<br>1 PL DEC ±0.30<br>2 PL DEC ±0.15<br>3 PL DEC ±0.08<br>3) Note reference =   |  | SIGNATURES     |  | DATE           |  | <p style="text-align: center;"><b>Amphenol</b></p> <p style="text-align: center;">Sine Systems - www.amphenol-sine.com<br/>44724 Morley Drive<br/>Clinton Township, MI 48036</p> <p style="text-align: center;">RECEPTACLE, 12 PIN, AT SERIES,<br/>W/FLANGE</p> |
| MATERIAL SPECIFICATIONS:   |  | DRAWN: J. HEAD |  | 14JUL15        |  |   |
| PROCESS SPECIFICATIONS:  |  | CHECKED:       |  |                |  |   |
| NEXT ASSY:   |  | APPROVAL:      |  | ENGINEER:      |  |   |
| CUSTOMER:  |  | APPROVAL:      |  | ENGINEER:      |  | SIZE: <b>B C-</b><br>TYPE: <b>AT04-12PX-PMXX</b><br>SCALE: <b>NONE</b>  |
| THIS DRAWING IS SUPPLIED FOR INFORMATION ONLY. DESIGN FEATURES, SPECIFICATIONS AND PERFORMANCE DATA SHOWN HEREON ARE THE PROPERTY OF THE AMPHENOL CORPORATION. NO RIGHTS OF REPRODUCTION ARE IMPLIED. ALL DIMENSIONS ARE SUBJECT TO NORMAL MANUFACTURING VARIATIONS. |  | CUSTOMER:      |  | DWG NO:        |  | REVISION  |
|  |  |                |  | AT04-12PX-PMXX |  | A4  |
|  |  |                |  | SHEET 1 OF 2   |  |   |

TITLE: RECEPTACLE, 12PIN, AT SERIES, W/FLANGE  
DWG NO: AT04-12PX-PMXX  
REV: A4  
SH: 1  
OF: 2

| REVISIONS |     |  |         |       |       |
|-----------|-----|--|---------|-------|-------|
| REV       | ECO | DESCRIPTION  | DATE    | BY    | APPR  |
| A1        | -   | RELEASE  | 14JUL15 | JAH   |       |
| A2        | -   | UPDATE   | 27OCT15 | JARRY | TOMMY |
| A3        | -   | ADDED -15 & -16 OPTIONS<br>ADDED COLORS TO NOTE #1 | 23MAR18 | JAH   |       |
| A4        | -   | CORRECTED DIMS                                     | 01OCT18 | JAH   |       |

P/N AT04-12PA-PMXX  
KEY-A CONFIGURATION  
STANDARD HOUSING COLOR: GREY



P/N AT04-12PB-PMXX  
KEY-B CONFIGURATION  
STANDARD HOUSING COLOR: BLACK



P/N AT04-12PC-PMXX  
KEY-C CONFIGURATION  
STANDARD HOUSING COLOR: GREEN



P/N AT04-12PD-PMXX  
KEY-D CONFIGURATION  
STANDARD HOUSING COLOR: BROWN



END CAP SHOWN  
ON THIS SHEET

| KEY-A CONFIGURATION |              |         |               |
|---------------------|--------------|---------|---------------|
| PART NUMBER         | SEAL         | END CAP | STRAIN RELIEF |
| AT04-12PA-PM11      | STANDARD     | NO      | NO            |
| AT04-12PA-PM12      | REDUCED DIA. | NO      | NO            |
| AT04-12PA-PM13      | STANDARD     | YES     | NO            |
| AT04-12PA-PM14      | REDUCED DIA. | YES     | NO            |
| AT04-12PA-PM15      | STANDARD     | NO      | YES           |
| AT04-12PA-PM16      | REDUCED DIA. | NO      | YES           |

| KEY-B CONFIGURATION |              |         |               |
|---------------------|--------------|---------|---------------|
| PART NUMBER         | SEAL         | END CAP | STRAIN RELIEF |
| AT04-12PB-PM11      | STANDARD     | NO      | NO            |
| AT04-12PB-PM12      | REDUCED DIA. | NO      | NO            |
| AT04-12PB-PM13      | STANDARD     | YES     | NO            |
| AT04-12PB-PM14      | REDUCED DIA. | YES     | NO            |
| AT04-12PB-PM15      | STANDARD     | NO      | YES           |
| AT04-12PB-PM16      | REDUCED DIA. | NO      | YES           |

| KEY-C CONFIGURATION |              |         |               |
|---------------------|--------------|---------|---------------|
| PART NUMBER         | SEAL         | END CAP | STRAIN RELIEF |
| AT04-12PC-PM11      | STANDARD     | NO      | NO            |
| AT04-12PC-PM12      | REDUCED DIA. | NO      | NO            |
| AT04-12PC-PM13      | STANDARD     | YES     | NO            |
| AT04-12PC-PM14      | REDUCED DIA. | YES     | NO            |
| AT04-12PC-PM15      | STANDARD     | NO      | YES           |
| AT04-12PC-PM16      | REDUCED DIA. | NO      | YES           |

| KEY-D CONFIGURATION |              |         |               |
|---------------------|--------------|---------|---------------|
| PART NUMBER         | SEAL         | END CAP | STRAIN RELIEF |
| AT04-12PD-PM11      | STANDARD     | NO      | NO            |
| AT04-12PD-PM12      | REDUCED DIA. | NO      | NO            |
| AT04-12PD-PM13      | STANDARD     | YES     | NO            |
| AT04-12PD-PM14      | REDUCED DIA. | YES     | NO            |
| AT04-12PD-PM15      | STANDARD     | NO      | YES           |
| AT04-12PD-PM16      | REDUCED DIA. | NO      | YES           |



| QUANTITY  | PART NUMBER | DESCRIPTION   | ITEM |
|---|-------------|---|------|
| <b>MATERIALS LIST</b>   |             |   |      |
| <small>UNLESS OTHERWISE SPECIFIED</small><br>1) All dimensions are in metric (mm)<br>2) Tolerances are as follows:<br>1 PL DEC ±0.30   F fractions ±1/64<br>2 PL DEC ±0.15   Angles ±1°<br>3 PL DEC ±0.08 |             | SIGNATURES    DATE<br>DRAWN: J HEAD    14JUL15<br>CHECKED:<br>ENGINEER:<br>APPROVAL:  |      |
| MATERIAL SPECIFICATIONS:  |             | <b>Amphenol</b><br>Sine Systems - www.amphenol-sine.com<br>44724 Morley Drive<br>Clinton Township, MI 48036   |      |
| PROCESS SPECIFICATIONS:   |             | CUSTOMER: RECEPTACLE, 12 PIN, AT SERIES, W/FLANGE<br>THIS DRAWING IS SUPPLIED FOR INFORMATION ONLY. DESIGN FEATURES, SPECIFICATIONS AND PERFORMANCE DATA SHOWN HEREON ARE THE PROPERTY OF THE AMPHENOL CORPORATION. NO RIGHTS OF REPRODUCTION ARE IMPLIED. ALL DIMENSIONS ARE SUBJECT TO NORMAL MANUFACTURING VARIATIONS. |      |
| NEXT ASSY:  |             | SIZE: B C-    TYPE: AT04-12PX-PMXX    REVISION: A4<br>SCALE: NONE    SHEET 2 OF 2   |      |

TITLE: RECEPTACLE, 12 PIN, AT SERIES, W/FLANGE    DWG NO: AT04-12PX-PMXX    REV: A4    SH: 2    OF: 2

# A Series™ - Contact Size 16 Options (Works with: AT, ATV, AHD-9, ARC, DuraMate and PanelMate Series)

| Machined Contacts, Sockets & Pins |  |      |       |          |
|-----------------------------------|--|------|-------|----------|
| Part Number                       | Description                            | Size | AWG   | Type     |
| AT60-215-1631                     | Male Contact - Pin, Gold-plated        | 16   | 14    | Machined |
| AT62-209-1631                     | Female Contact - Socket, Gold-plated   | 16   | 14    | Machined |
| AT60-215-16141                    | Male Contact - Pin, Nickel-plated      | 16   | 14    | Machined |
| AT62-209-16141                    | Female Contact - Socket, Nickel-plated | 16   | 14    | Machined |
| AT60-202-1631                     | Male Contact - Pin, Gold-plated        | 16   | 16-20 | Machined |
| AT62-201-1631                     | Female Contact - Socket, Gold-plated   | 16   | 16-20 | Machined |
| AT60-202-16141                    | Male Contact - Pin, Nickel-plated      | 16   | 16-20 | Machined |
| AT62-201-16141                    | Female Contact - Socket, Nickel-plated | 16   | 16-20 | Machined |
| AT60-202-1631-22                  | Male Contact - Pin, Gold-plated        | 16   | 22-24 | Machined |
| AT62-201-1631-22                  | Female Contact - Socket, Gold-plated   | 16   | 22-24 | Machined |
| AT60-202-16141-22                 | Male Contact - Pin, Nickel-plated      | 16   | 22-24 | Machined |
| AT62-201-16141-22                 | Female Contact - Socket, Nickel-plated | 16   | 22-24 | Machined |

| Tooling - Machined Contacts |   |
|-----------------------------|---|
| Part Number                 | Description   |
| AUTK-20                     | Hand Crimp Tool, Size 20                                      |
| AUTK-100                    | Universal Heavy Duty Contact Crimping Tool Kit, Size 12/16/20 |
| CA-5D12                     | Universal Hand Crimp Tool, Size 12/16/20                      |
| CA-5E12                     | Pneumatic Crimp Tool, Size 12/16/20                           |

| Contact Removal Tools (For both Machined or Stamped & Formed Contacts) |  |
|--|--|
| Part Number  | Description                            |
| ATRT-100   | Contact and Wedgelock Extraction Tool  |
| AT11-310-1605  | Contact Removal Tool, Plastic, Size 16 |

| Sealing Plugs (For both Machined or Stamped & Formed Contacts) |   |
|--|---|
| Part Number  | Description                                     |
| A114017  | Sealing Plug, Size 16, White                    |
| A114017-SR   | Sealing Plug, Size 16, SR01 Series, Black       |
| AT13-217-1605  | Locking Sealing Plug, Size 16, Grey             |
| AT13-217-1605-SR   | Locking Sealing Plug, Size 16, SR01 Series, Red |

| Stamped & Formed Contacts, Sockets & Pins |  |      |       |                  |
|---|--|------|-------|------------------|
| Part Number                               | Description                            | Size | AWG   | Type             |
| AT60-14-0144                              | Male Contact - Pin, Gold-plated        | 16   | 14-16 | Stamped & Formed |
| AT62-14-0144                              | Female Contact - Socket, Gold-plated   | 16   | 14-16 | Stamped & Formed |
| AT60-14-0122                              | Male Contact - Pin, Nickel-plated      | 16   | 14-16 | Stamped & Formed |
| AT62-14-0122                              | Female Contact - Socket, Nickel-plated | 16   | 14-16 | Stamped & Formed |
| AT60-16-0144                              | Male Contact - Pin, Gold-plated        | 16   | 16-18 | Stamped & Formed |
| AT62-16-0144                              | Female Contact - Socket, Gold-plated   | 16   | 16-18 | Stamped & Formed |
| AT60-16-0122                              | Male Contact - Pin, Nickel-plated      | 16   | 16-18 | Stamped & Formed |
| AT62-16-0122                              | Female Contact - Socket, Nickel-plated | 16   | 16-18 | Stamped & Formed |
| AT60-16-0644                              | Male Contact - Pin, Gold-plated        | 16   | 18-20 | Stamped & Formed |
| AT62-16-0644                              | Female Contact - Socket, Gold-plated   | 16   | 18-20 | Stamped & Formed |
| AT60-16-0622                              | Male Contact - Pin, Nickel-plated      | 16   | 18-20 | Stamped & Formed |
| AT62-16-0622                              | Female Contact - Socket, Nickel-plated | 16   | 18-20 | Stamped & Formed |
| AT60-16-0844                              | Male Contact - Pin, Gold-plated        | 16   | 20-22 | Stamped & Formed |
| AT62-16-0844                              | Female Contact - Socket, Gold-plated   | 16   | 20-22 | Stamped & Formed |
| AT60-16-0822                              | Male Contact - Pin, Nickel-plated      | 16   | 20-22 | Stamped & Formed |
| AT62-16-0822                              | Female Contact - Socket, Nickel-plated | 16   | 20-22 | Stamped & Formed |

| Tooling - Stamped & Formed Contacts |                                     |
|-------------------------------------|-------------------------------------|
| MFX-3950                            | Crimp Die - Size 16, 18-20AWG       |
| MFX-3953                            | Crimp Die - Size 16, 16-18AWG       |
| MFX-3975                            | Crimp Die - Size 16, 14-16AWG       |
| MFX-3990                            | Crimp Die - Size 16, 20-22AWG       |
| ATT-16-00                           | Hand Crimp Tool - Size 16, 14-16AWG |
| ATT-16-01                           | Hand Crimp Tool - Size 16, 18-20AWG |
| ATT-1612-03                         | Hand Crimp Tool - Size 16, 20-22AWG |