

1

2

3

4

5

6

7

A

A

B

B

C

C

D

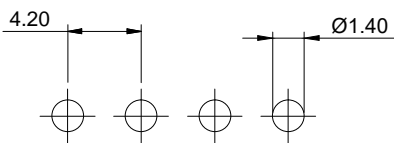
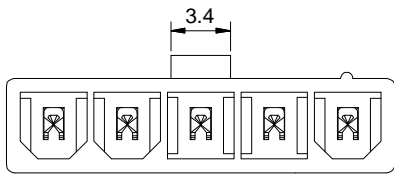
D

E

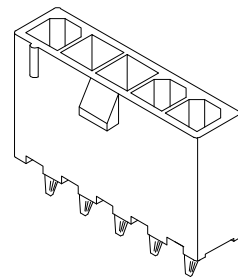
E

F

F



PCB LAYOUT



NOTE:

1.MATERIAL

- 1.1 Insulator:PA 66,UL94V-0
- 1.2 Contact:Brass,Tin plated

2.ELECTRIC

- 2.1 Voltage Rating:600V AC/DC
- 2.2 Current Rating:7A AC/DC
- 2.3 Withstanding Voltage:1500V AC/minute
- 2.4 Insulation Resistance:1000MΩ Min
- 2.5 Contact Resistance:20mΩ Max

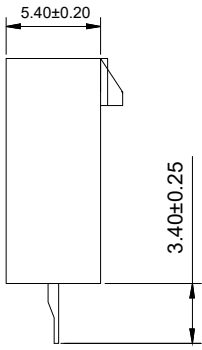
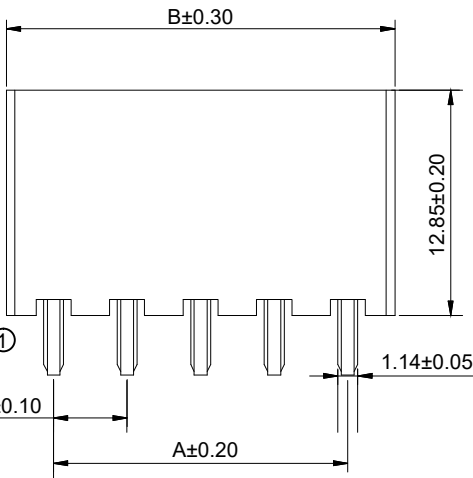
- 3.Temperature Range:-25°C To +85°C
- 4.Packing: Bag

Order code:

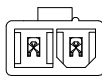
① A-WBP-S002EG-xxTBxx

No. of poles

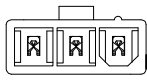
Insulator color:
01:Black
02:Natural



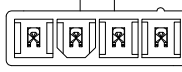
02P



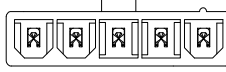
03P



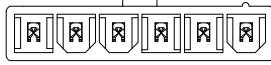
04P



05P



06P



CIRCUIT SIZE LAYOUT

Poles	Part No.	Dimensions (mm)	
		A	B
02	A-WBP-S002EG-02TBxx	4.20	9.60
03	A-WBP-S002EG-03TBxx	8.40	13.80
04	A-WBP-S002EG-04TBxx	12.60	18.00
05	A-WBP-S002EG-05TBxx	16.80	22.20
06	A-WBP-S002EG-06TBxx	21.00	26.40

G

G

RoHS compliant
unit:mm



② File No.: E198287

Scale	Free
TOLERANCE	
X.	±0.35
X.X	±0.25
X.XX	±0.20
X.XXX	±0.15
DIM	TOL
Angle	TOL

Id.	modification	Date	Name
②	Add UL E-No. on page 1,2	03.14.2023	Peter
①	Update design and add P/N	06.05.2022	Daniel
①	Drawn	01.15.2022	Peter

Date

Name

Drawn 01.15.2022 Peter

Approved 03.14.2023 Peter

Description: Wire to Board Wafer Pitch 4.20mm 180° THT	
ASSMANN WSW-NO. A-WBP-S002EG-xxTBxx	
Drawing-No. ASS 9209 CO	rev02
Customer-No.	SHEET 1 / 7

H

H

1

2

3

4

5

6

7

1

2

3

4

5

6

7

A

A

B

B

C

C

D

D

E

E

F

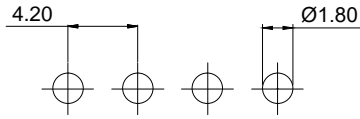
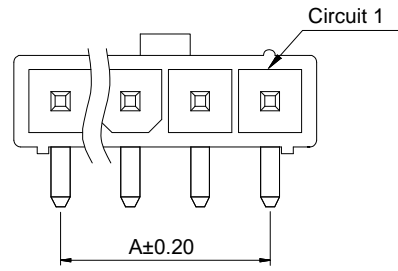
F

G

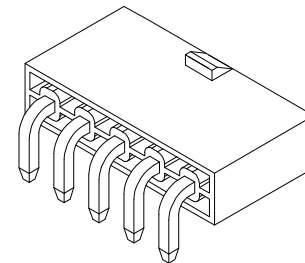
G

H

H



P.C.B. LAYOUT

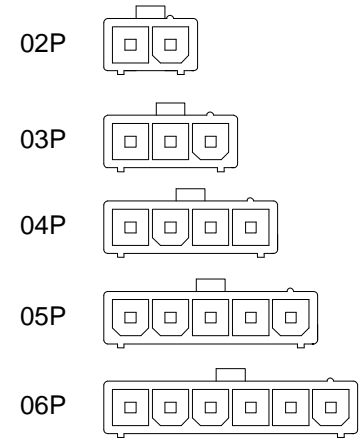
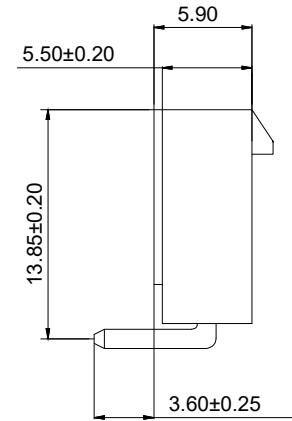
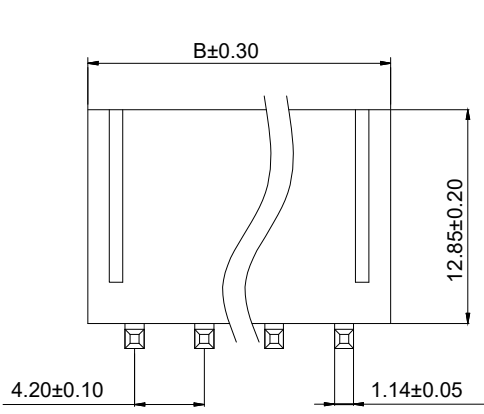


NOTE:

- 1.MATERIAL
 - 1.1 Insulator:PA 66,UL94V-2
 - 1.2 Contact:Brass,Tin over Nickel
- 2.ELECTRIC
 - 2.1 Voltage Rating:600V AC/DC
 - 2.2 Current Rating:7A AC/DC
 - 2.3 Withstanding Voltage:1500V AC/minute
 - 2.4 Insulation Resistance:1000MΩ Min
 - 2.5 Contact Resistance:20mΩ Max
- 3.Temperature Range:-25°C To +85°C
- 4.Packing:PE bag

① Order code:
A-WBP-S002EA-xxTBxx

No. of poles Insulator color:
01:Black
02:Natural



CIRCUIT SIZE LAYOUT

Poles	Part No.	Dimensions (mm)	
		A	B
02	A-WBP-S002EA-02TBxx	4.20	9.80
03	A-WBP-S002EA-03TBxx	8.40	14.00
04	A-WBP-S002EA-04TBxx	12.60	18.20
05	A-WBP-S002EA-05TBxx	16.80	22.40
06	A-WBP-S002EA-06TBxx	21.00	26.60

RoHS compliant
unit:mm



② File No.: E198287

Scale	Free	Date	Name		
TOLERANCE		Drawn	01.15.2022	Peter	
X.	±0.35	Approved	03.14.2023	Peter	
X.X	±0.25				
X.XX	±0.20	②	Add UL E-No. on page 1,2	03.14.2023	Peter
X.XXX	±0.15	①	Update design and add P/N	06.05.2022	Daniel
DIM	TOL	①	Drawn	01.15.2022	Peter
Angle	TOL	Id.	modification	Date	Name



Description: Wire to Board Wafer
Pitch 4.20mm 90° THT

ASSMANN WSW-NO.
A-WBP-S002EA-xxTBxx

Drawing-No.
ASS 9209 CO rev02

Customer-No. SHEET 2 / 7

1

2

3

4

5

6

7

1

2

3

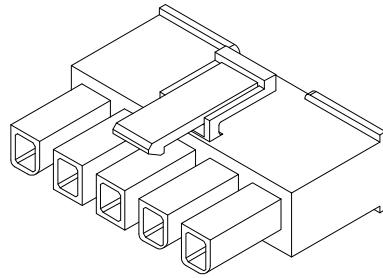
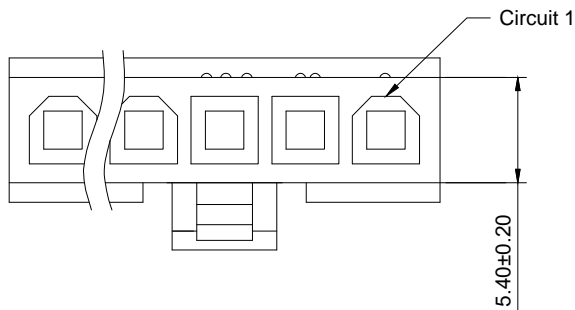
4

5

6

7

A

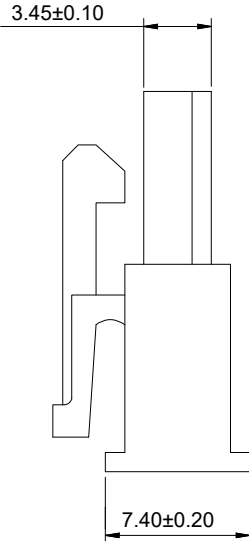
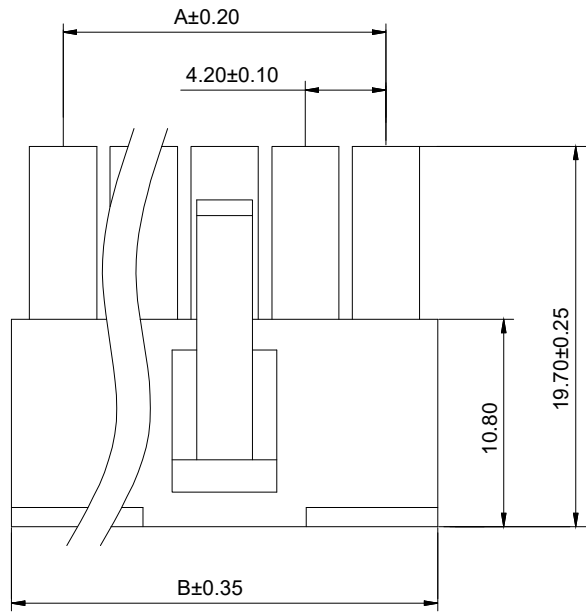


NOTE:

- 1.MATERIAL
 - 1.1 Insulator:PA 66,UL94V-2,Natural
- 2.ELECTRIC
 - 2.1 Voltage Rating:600V AC/DC
 - 2.2 Current Rating:7A AC/DC
 - 2.3 Withstanding Voltage:1500V AC/minute
 - 2.4 Insulation Resistance:1000MΩ Min
 - 2.5 Contact Resistance:20mΩ Max
- 3.Temperature Range:-25°C To +85°C
- 4.Packing:PE bag

B

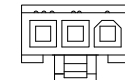
C



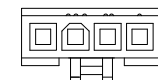
02P



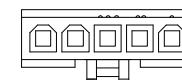
03P



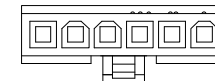
04P



05P



06P



CIRCUIT SIZE LAYOUT

Poles	Part No.	Dimensions (mm)	
		A	B
02	A-WBH-S002EG-02CB02	4.20	9.60
03	A-WBH-S002EG-03CB02	8.40	13.80
04	A-WBH-S002EG-04CB02	12.60	18.00
05	A-WBH-S002EG-05CB02	16.80	22.20
06	A-WBH-S002EG-06CB02	21.00	26.40

F

G

RoHS compliant
unit:mm

Scale	Free					Date	Name
TOLERANCE							
X.	±0.35					Drawn	01.15.2022 Peter
X.X	±0.25					Approved	03.14.2023 Peter
X.XX	±0.20	②	Add UL E-No. on page 1,2	03.14.2023	Peter		
X.XXX	±0.15	①	Update design and add P/N	06.05.2022	Daniel		
DIM	TOL	③	Drawn	01.15.2022	Peter		
Angle	TOL	Id.	modification	Date	Name		

Description: Wire to Board Housing
Pitch 4.20mm

ASSMANN WSW-NO.
A-WBH-S002EG-xxCB02

Drawing-No.
ASS 9209 CO rev02

Customer-No.
SHEET 3 / 7

1

2

3

4

5

6

7

H

A

B

C

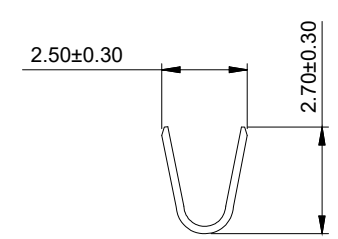
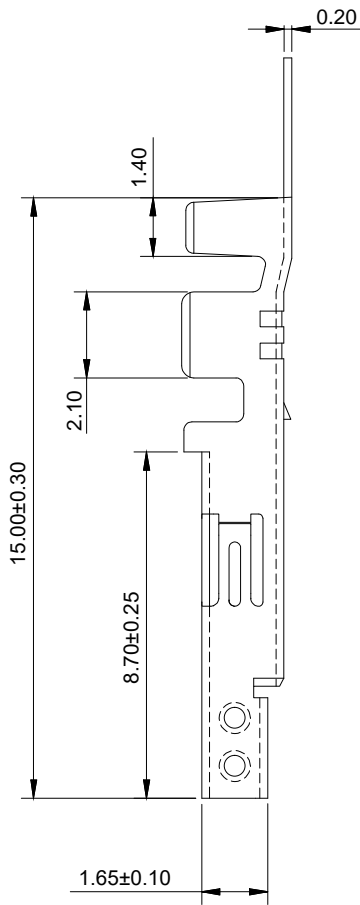
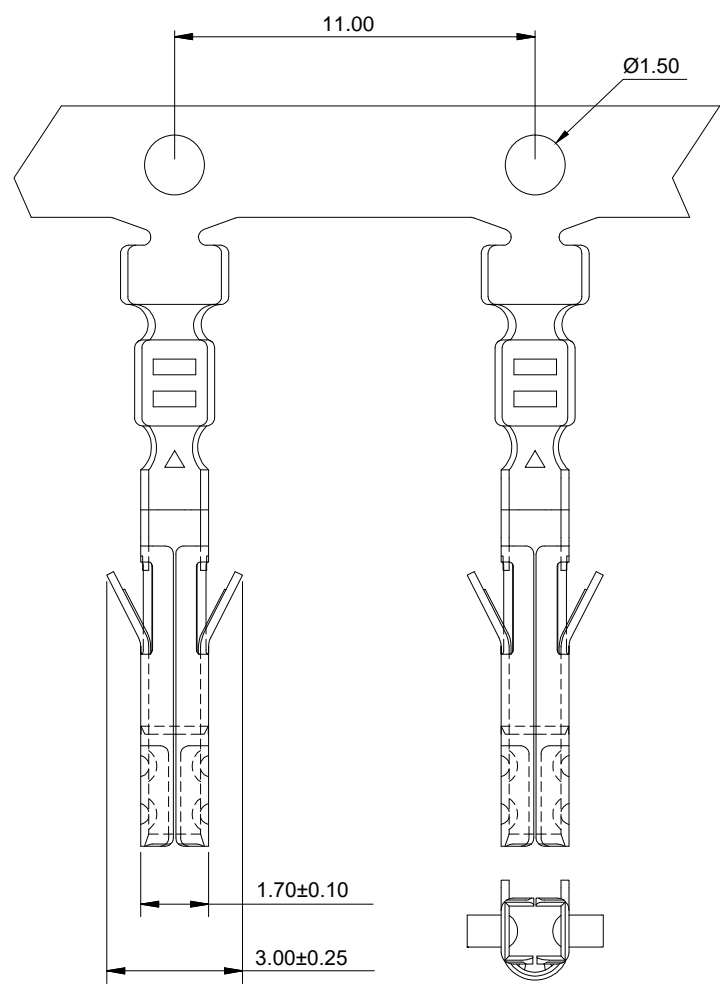
D

E

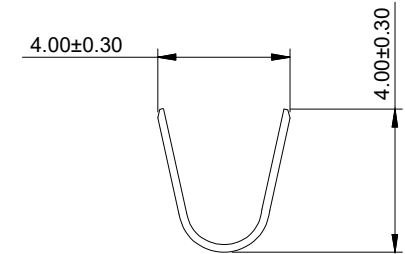
F

G

H



SEC:B-B



SEC:A-A

NOTE:
 1.MATERIAL
 1.1 Insulator:Phosphor Bronze,Tin over Nickel
 2.ELECTRIC
 2.1 Voltage Rating:600V AC/DC
 2.2 Current Rating:7A AC/DC
 2.3 Withstanding Voltage:1500V AC/minute
 2.4 Insulation Resistance:1000MΩ Min
 2.5 Contact Resistance:20mΩ Max
 3.Temperature Range:-25°C To +85°C
 4.Applicable Wire:AWG#18-#22
 5.Packing:Reel

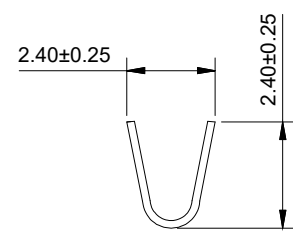
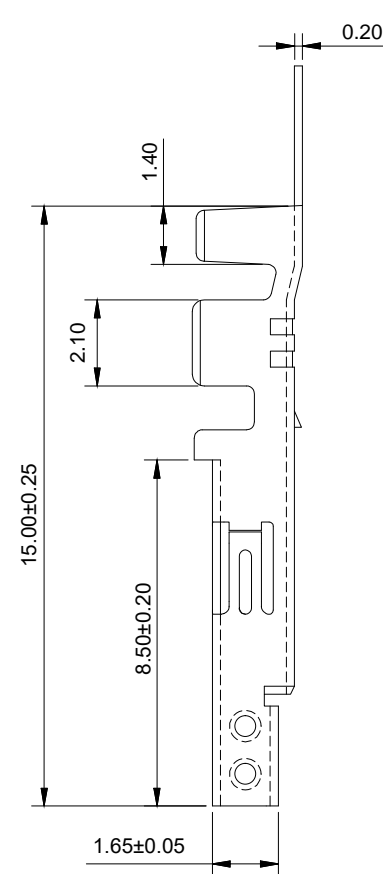
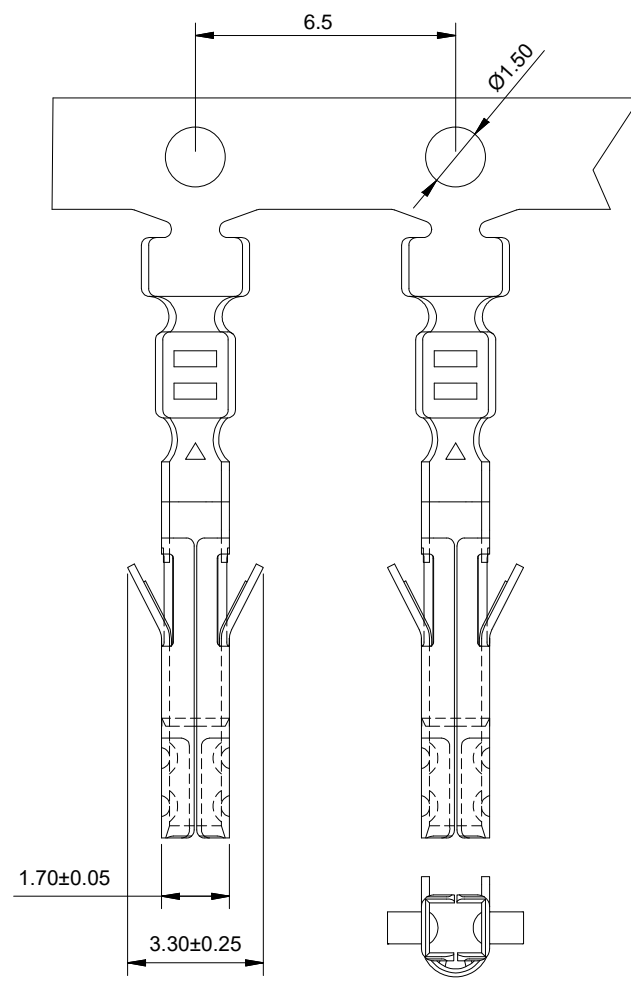
RoHS compliant
unit:mm

Scale	Free
TOLERANCE	
X.	±0.35
X.X	±0.25
X.XX	±0.20
X.XXX	±0.15
DIM	TOL
Angle	TOL

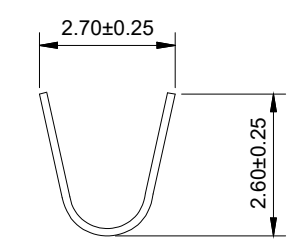
②	Add UL E-No. on page 1,2	03.14.2023	Peter
①	Update design and add P/N	06.05.2022	Daniel
①	Drawn	01.15.2022	Peter
Id.	modification	Date	Name

Date
Name
Description: Wire to Board Terminal
Pitch 4.20mm
Drawn 01.15.2022 Peter
Approved 03.14.2023 Peter
ASSMANN WSW-NO.
A-WBT-S002EG-01CR01
Drawing-No.
ASS 9209 CO
Customer-No.
ASSMANN WSW components

rev02
SHEET 4 / 7



SEC: B-B



SEC: A-A

NOTE:

- MATERIAL**
1.1 Insulator: Phosphor Bronze, Tin over Nickel
- ELECTRIC**
2.1 Voltage Rating: 600V AC/DC
2.2 Current Rating: 7A AC/DC
2.3 Withstanding Voltage: 1500V AC/minute
2.4 Insulation Resistance: 1000MΩ Min
2.5 Contact Resistance: 20mΩ Max
- Temperature Range: -25°C To +85°C
- Applicable Wire: AWG#20-#24
- Packing: Reel

RoHS compliant
unit:mm

Scale	Free					Date	Name	Description: Wire to Board Terminal Pitch 4.20mm	
TOLERANCE									
X.	±0.35					Drawn	01.15.2022	Peter	
X.X	±0.25					Approved	03.14.2023	Peter	ASSMANN WSW-NO.
X.XX	±0.20	②	Add UL E-No. on page 1,2	03.14.2023	Peter				① A-WBT-S002EG-01CR02
X.XXX	±0.15	①	Update design and add P/N	06.05.2022	Daniel				
DIM	TOL	①	Drawn	01.15.2022	Peter				
Angle	TOL	Id.	modification	Date	Name				

Drawing-No. ASS 9209 CO rev02
Customer-No. SHEET 5 / 7

1

2

3

4

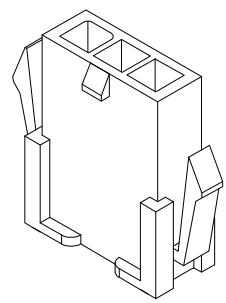
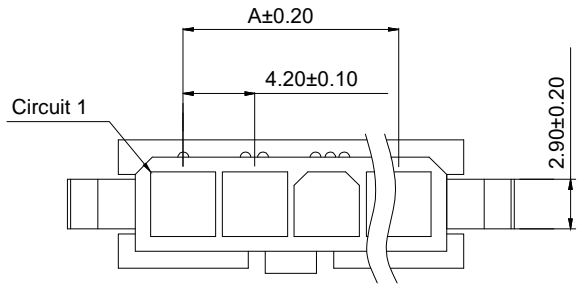
5

6

7

A

A



NOTE:

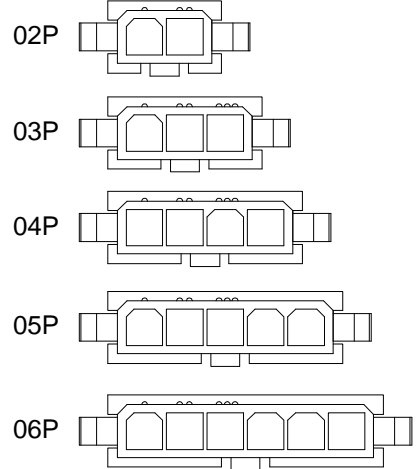
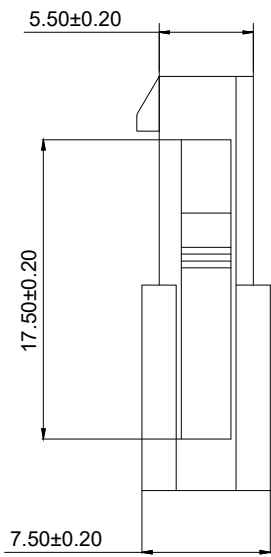
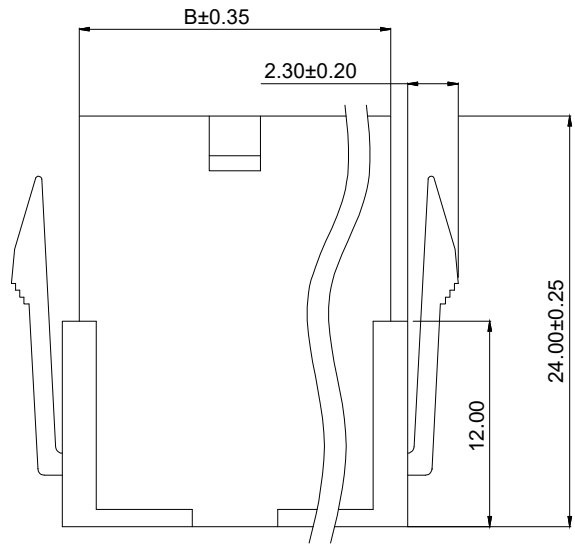
- 1.MATERIAL
 - 1.1 Insulator:PA 66,UL94V-2,Black
- 2.ELECTRIC
 - 2.1 Voltage Rating:600V AC/DC
 - 2.2 Current Rating:7A AC/DC
 - 2.3 Withstanding Voltage:1500V AC/minute
 - 2.4 Insulation Resistance:1000MΩ Min
 - 2.5 Contact Resistance:20mΩ Max
- 3.Temperature Range:-25°C To +85°C
- 4.Packing:PE bag

B

B

C

C



CIRCUIT SIZE LAYOUT

Poles	Part No.	Dimensions (mm)	
		A	B
02	A-WBH-S002EG-02CB01	4.20	9.80
03	A-WBH-S002EG-03CB01	8.40	14.00
04	A-WBH-S002EG-04CB01	12.60	18.20
05	A-WBH-S002EG-05CB01	16.80	22.40
06	A-WBH-S002EG-06CB01	21.00	26.60

D

D

E

E

F

F

G

G

RoHS compliant
unit:mm

Scale	Free
TOLERANCE	
X.	±0.35
X.X	±0.25
X.XX	±0.20
X.XXX	±0.15
DIM	TOL
Angle	TOL

					Date	Name	Description: Wire to Board Housing Pitch 4.20mm
				Drawn	01.15.2022	Peter	
				Approved	03.14.2023	Peter	ASSMANN WSW-NO. A-WBH-S002EG-xxCB01
		②	Add UL E-No. on page 1,2	03.14.2023	Peter		
		①	Update design and add P/N	06.05.2022	Daniel		Drawing-No. ASS 9209 CO
		③	Drawn	01.15.2022	Peter		
		Id.	modification	Date	Name		Customer-No.

H

H

1

2

3

4

5

6

7

1 2 3 4 5 6 7

A

B

C

D

E

F

NOTE:
 1.MATERIAL
 1.1 Insulator:Phosphor Bronze,Tin over Nickel
 2.ELECTRIC
 2.1 Voltage Rating:600V AC/DC
 2.2 Current Rating:7A AC/DC
 2.3 Withstanding Voltage:1500V AC/minute
 2.4 Insulation Resistance:1000MΩ Min
 2.5 Contact Resistance:20mΩ Max
 3.Temperature Range:-25°C To +85°C
 4.Applicable Wire:AWG#18-#22
 5.Packing:Reel

SEC:A-A SEC:B-B

G

H

RoHS compliant
unit:mm

Scale	Free						Date	Name	Description: Wire to Board Terminal Pitch 4.20mm			
TOLERANCE							Drawn	01.15.2022		Peter		
X.	±0.35						Approved	03.14.2023	Peter	ASSMANN WSW-NO.		
X.X	±0.25									① A-WBT-S002EG-01CR03		
X.XX	±0.20	②	Add UL E-No. on page 1,2	03.14.2023	Peter							
X.XXX	±0.15	①	Update design and add P/N	06.05.2022	Daniel							
DIM	TOL	③	Drawn	01.15.2022	Peter				Drawing-No.	ASS 9209 CO	rev02	
Angle	TOL	Id.	modification	Date	Name					Customer-No.		SHEET 7 / 7

1 2 3 4 5 6 7