

1

2

3

4

5

6

7

A

A

B

B

C

C

D

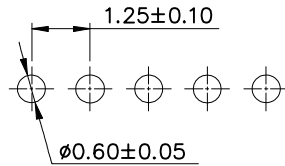
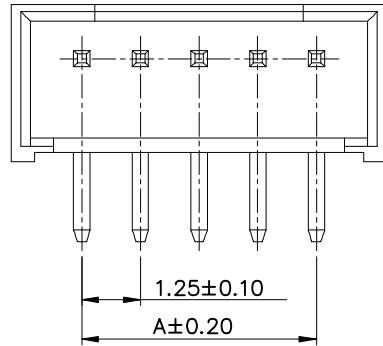
D

E

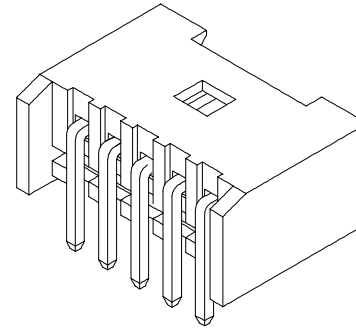
E

F

F



P.C.B LAYOUT



## NOTE:

## 1.MATERIAL

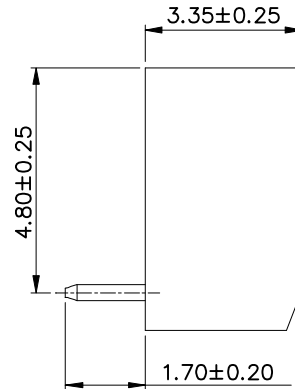
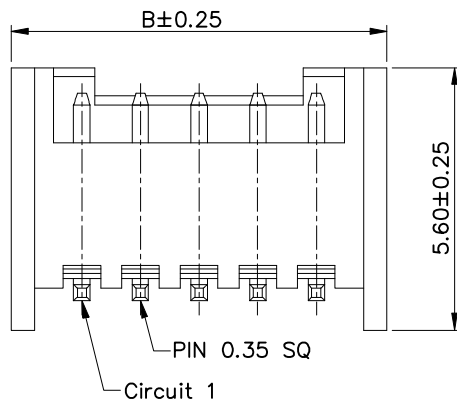
- 1.1 Insulator:Nylon 66,UL94V-0,Reddish brown
- 1.2 Contact: Brass,Tin over Nickel

## 2.ELECTRIC

- 2.1 Voltage Rating:200V AC/DC
- 2.2 Current Rating:1A AC/DC
- 2.3 Withstanding Voltage:500V AC/minute
- 2.4 Insulation Resistance:100MΩ Min.

## 3.Temperature Range:-40°C To +105°C

## 4.Packing:PE bag



Poles	Part No.	Dimensions (mm)	
		A	B
02	A-WBP-D003EA-02TB01	1.25	4.25
03	A-WBP-D003EA-03TB01	2.50	5.50
04	A-WBP-D003EA-04TB01	3.75	6.75
05	A-WBP-D003EA-05TB01	5.00	8.00
06	A-WBP-D003EA-06TB01	6.25	9.25
07	A-WBP-D003EA-07TB01	7.50	10.50
08	A-WBP-D003EA-08TB01	8.75	11.75
09	A-WBP-D003EA-09TB01	10.00	13.00
10	A-WBP-D003EA-10TB01	11.25	14.25
11	A-WBP-D003EA-11TB01	12.50	15.50
12	A-WBP-D003EA-12TB01	13.75	16.75
13	A-WBP-D003EA-13TB01	15.00	18.00
14	A-WBP-D003EA-14TB01	16.25	19.25
15	A-WBP-D003EA-15TB01	17.50	20.50

G

G

RoHS compliant

unit:mm

H

H

Scale	Free
TOLERANCE	
X.	±0.35
X.X	±0.25
X.XX	±0.20
X.XXX	±0.15
DIM	TOL
Angle	TOL

①

Drawn

12.27.2021

Peter

Id.

modification

Date

Name

Date

Name

Description: Wire to Board Wafer  
Pitch1.25mm 90° THT

Drawn

12.27.2021

Peter

Approved

12.27.2021

Peter

ASSMANN WSW-NO.

A-WBP-D003EA-xxTB01

Drawing-No.

ASS 9185 CO

rev00

Customer-No.

SHEET  
1 / 4

**ASSMANN**  
WSW components

1

2

3

4

5

6

7

SV4422

1

2

3

4

5

6

7

A

A

B

B

C

C

D

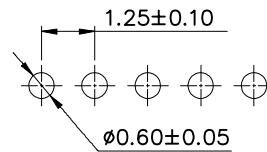
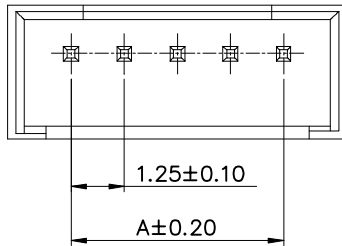
D

E

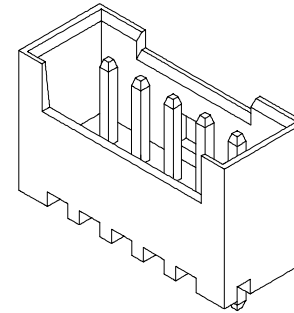
E

F

F



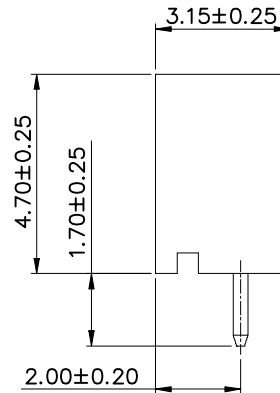
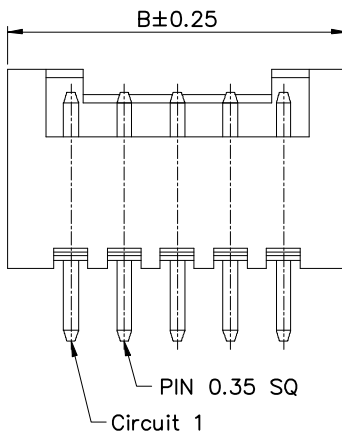
P.C.B LAYOUT

**NOTE:****1.MATERIAL**

- 1.1 Insulator:Nylon 66,UL94V-0,Reddish brown
- 1.2 Contact: Brass,Tin over Nickel

**2.ELECTRIC**

- 2.1 Voltage Rating:200V AC/DC
- 2.2 Current Rating:1A AC/DC
- 2.3 Withstanding Voltage:500V AC/minute
- 2.4 Insulation Resistance:100MΩ Min.

**3.Temperature Range:-40°C To +105°C****4.Packing:PE bag**

Poles	Part No.	Dimensions (mm)	
		A	B
02	A-WBP-D003EG-02TB01	1.25	4.25
03	A-WBP-D003EG-03TB01	2.50	5.50
04	A-WBP-D003EG-04TB01	3.75	6.75
05	A-WBP-D003EG-05TB01	5.00	8.00
06	A-WBP-D003EG-06TB01	6.25	9.25
07	A-WBP-D003EG-07TB01	7.50	10.50
08	A-WBP-D003EG-08TB01	8.75	11.75
09	A-WBP-D003EG-09TB01	10.00	13.00
10	A-WBP-D003EG-10TB01	11.25	14.25
11	A-WBP-D003EG-11TB01	12.50	15.50
12	A-WBP-D003EG-12TB01	13.75	16.75
13	A-WBP-D003EG-13TB01	15.00	18.00
14	A-WBP-D003EG-14TB01	16.25	19.25
15	A-WBP-D003EG-15TB01	17.50	20.50

G

G

H

H

RoHS compliant

unit:mm

Scale Free

TOLERANCE

X. ±0.35

X.X ±0.25

X.XX ±0.20

X.XXX ±0.15

DIM TOL

Angle TOL

①

Drawn

Id.

modification

12.27.2021

Date

Peter

Name

Date

12.27.2021

Approved

12.27.2021

Name

Peter

Peter

Description: Wire to Board Wafer  
Pitch1.25mm 180° THT

ASSMANN WSW-NO.

A-WBP-D003EG-xxTB01

Drawing-No.

ASS 9185 CO

rev00

Customer-No.

SHEET  
2 / 4

1

2

3

4

5

6

7

SV4422

1

2

3

4

5

6

7

A

A

B

B

C

C

D

D

E

E

F

F

**NOTE:**

**1.MATERIAL**

1.1 Insulator:Nylon 66,UL94V-0,Reddish brown

**2.ELECTRIC**

2.1 Voltage Rating:200V AC/DC

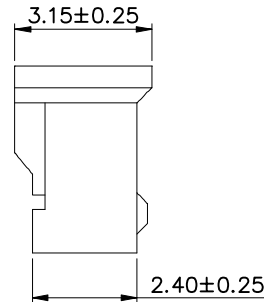
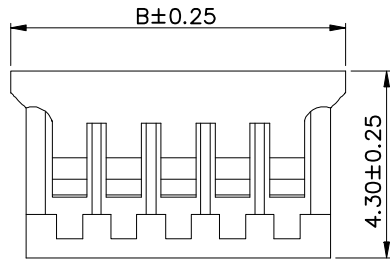
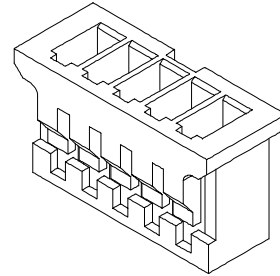
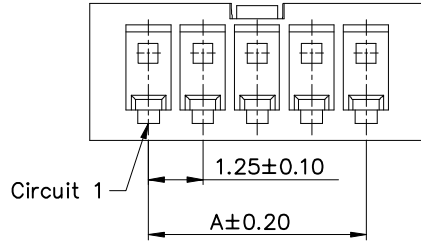
2.2 Current Rating:1A AC/DC

2.3 Withstanding Voltage:500V AC/minute

2.4 Insulation Resistance:100MΩ Min.

3.Temperature Range:-40°C To +105°C

4.Packing:PE bag



Poles	Part No.	Dimensions (mm)	
		A	B
02	A-WBH-D003EG-02CB01	1.25	3.95
03	A-WBH-D003EG-03CB01	2.50	5.20
04	A-WBH-D003EG-04CB01	3.75	6.45
05	A-WBH-D003EG-05CB01	5.00	7.70
06	A-WBH-D003EG-06CB01	6.25	8.95
07	A-WBH-D003EG-07CB01	7.50	10.20
08	A-WBH-D003EG-08CB01	8.75	11.45
09	A-WBH-D003EG-09CB01	10.00	12.70
10	A-WBH-D003EG-10CB01	11.25	13.95
11	A-WBH-D003EG-11CB01	12.50	15.20
12	A-WBH-D003EG-12CB01	13.75	16.45
13	A-WBH-D003EG-13CB01	15.00	17.70
14	A-WBH-D003EG-14CB01	16.25	18.95
15	A-WBH-D003EG-15CB01	17.50	20.20

G

G

H

H

**RoHS compliant**  
unit:mm

Scale	Free
<b>TOLERANCE</b>	
X.	±0.35
X.X	±0.25
X.XX	±0.20
X.XXX	±0.15
DIM	TOL
Angle	TOL

①	Drawn	12.27.2021	Peter
Id.	modification	Date	Name



Description: Wire to Board Housing Pitch1.25mm	
ASSMANN WSWW-NO. <b>A-WBH-D003EG-xxCB01</b>	
Drawing-No. <b>ASS 9185 CO</b>	rev00
Customer-No.	SHEET 3 / 4

1

2

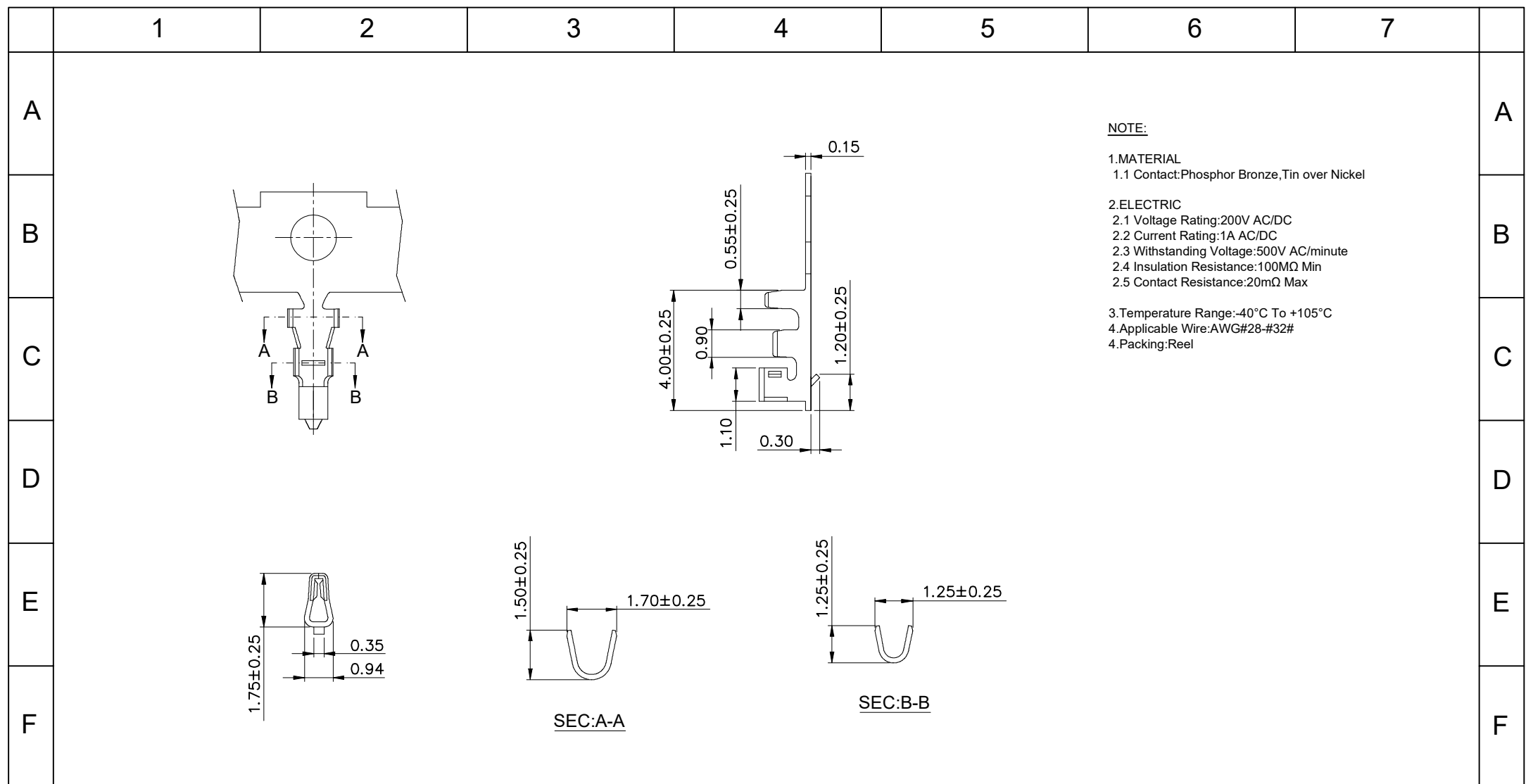
3

4

5

6

7



**NOTE:**

1.MATERIAL  
1.1 Contact:Phosphor Bronze,Tin over Nickel

2.ELECTRIC  
2.1 Voltage Rating:200V AC/DC  
2.2 Current Rating:1A AC/DC  
2.3 Withstanding Voltage:500V AC/minute  
2.4 Insulation Resistance:100MΩ Min  
2.5 Contact Resistance:20mΩ Max

3.Temperature Range:-40°C To +105°C  
4.Applicable Wire:AWG#28-#32#  
4.Packing:Reel

G	RoHS compliant unit:mm	Scale	Free					Date	Name	Description: Wire to Board Terminal Pitch1.25mm	
		TOLERANCE						Drawn	12.27.2021		Peter
H		X.	±0.35					Approved	12.27.2021	Peter	ASSMANN WSW-NO. A-WBT-D003EG-01CR01
		X.X	±0.25								Drawing-No. ASS 9185 CO rev00
		X.XX	±0.20								
		X.XXX	±0.15								Customer-No. SHEET 4 / 4
		DIM	TOL	Ⓢ	Drawn	12.27.2021	Peter				
		Angle	TOL	Id.	modification	Date	Name				