

1 2 3 4 5 6 7

A

A

B

B

C

C

D

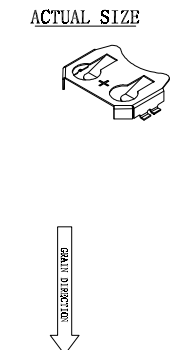
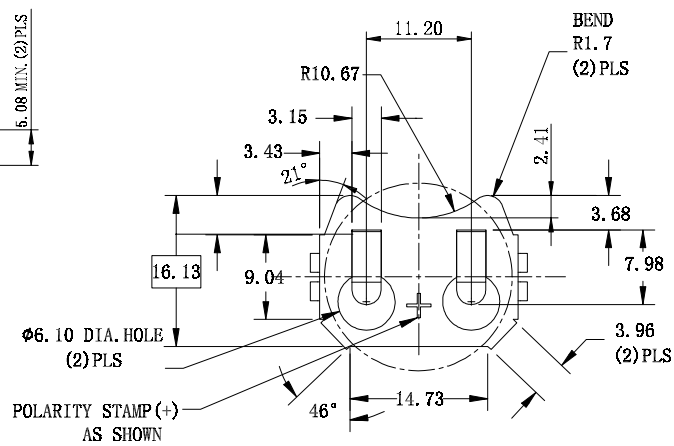
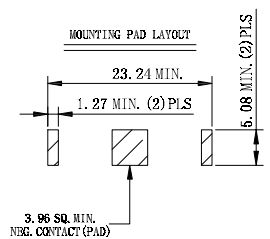
D

E

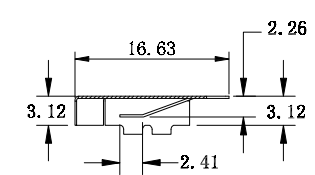
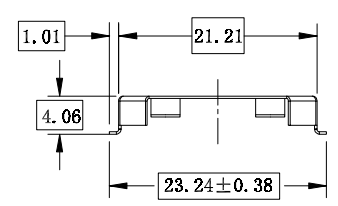
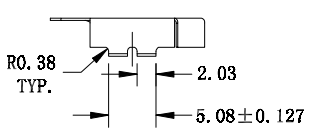
E

F

F



**NOTE:**  
 1.MATERIAL  
 1.1 Contact: Phosphor Bronze,T=0.254mm Full Hard  
 2.FINISH  
 2.1 Contact: Nickel Plate  
 0.00254-0.00762 Nickel,Over 0.00127-0.00254 Copper  
 3.Geometry  
 3.1 All inside bend radii to be a min. of material thickness unless otherwise specified  
 3.2 Part must be free of all burrs and sharp edges  
 3.3 Indicates critical dimension  
 4.Packing: Tape & Reel



G

G

H

H

RoHS compliant  
unit:mm

Scale	Free						Date	Name	Description: Battery Contacts CR2032 Type	
	TOLERANCE						Drawn	29.11.2021	Peter	
X.	±0.35					Approved	29.11.2021	Peter	ASSMANN WSW-NO. A-BAT-CH-C8-EA-CSR4	
.X	±0.25								Drawing-No. ASS 9105 CO rev00	
.XX	±0.20								Customer-No. SHEET 1 / 2	
.XXX	±0.15									
DIM	TOL									
Angle	TOL									
①	Drawn		29.11.2021	Peter						
Id.	modification		Date	Name						

1 2 3 4 5 6 7

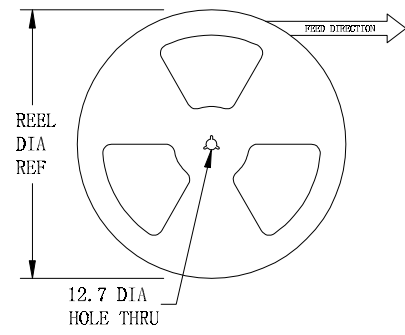
1 2 3 4 5 6 7

A

A

**NOTE:**

- 1. Tape and Reel Specifications
- 1.1 Tape: MATL-ALL Conductive Polystyrene Carrier  
ANSI/EIA-481 Standard
- 1.2 Reel: 330.2 DIA, 500 Pieces Part Per Reel



SEE INSPECTION REQUIREMENT



B

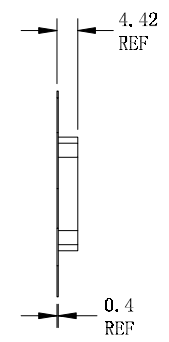
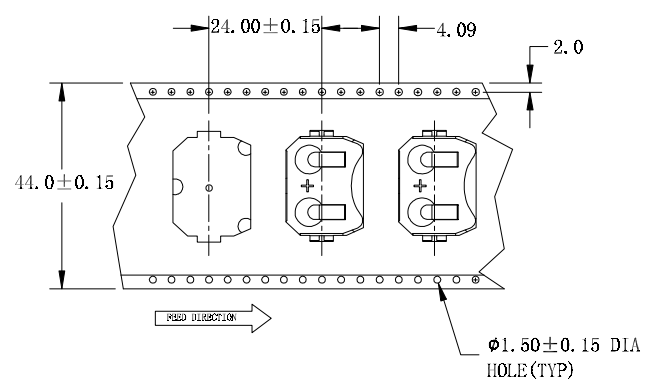
B

C

C

D

D



E

E

F

F

G

G

**RoHS compliant**  
unit:mm

Scale	Free
<b>TOLERANCE</b>	
.X	±0.35
.X	±0.25
.XX	±0.20
.XXX	±0.15
DIM	TOL
Angle	TOL

						Date	Name	Description: Battery Contacts Packing method	
					Drawn	29.11.2021	Peter		
					Approved	29.11.2021	Peter	ASSMANN WSW-NO. <b>A-BAT-CH-C8-EA-CSR4</b>	
								Drawing-No. <b>ASS 9105 CO</b>	rev00
								Customer-No.	
①	Drawn		29.11.2021	Peter					
	modification		Date	Name					

H

H

1 2 3 4 5 6 7