

NOTES:

MATERIAL

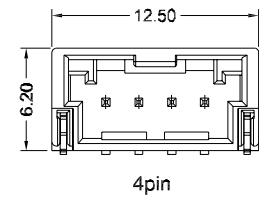
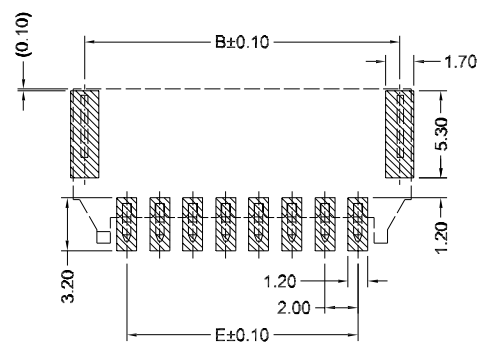
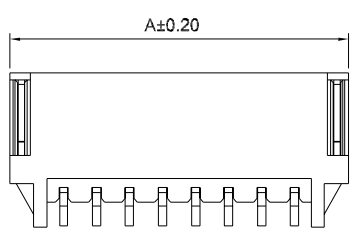
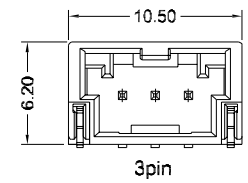
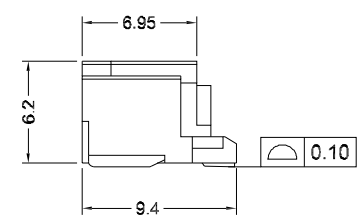
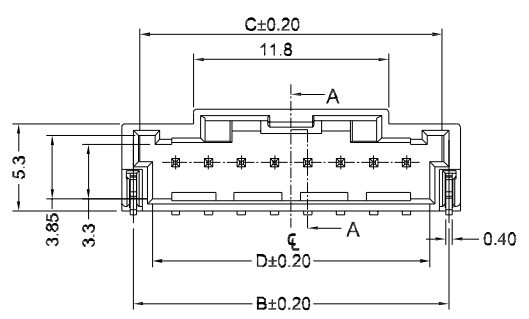
- 1. Insulator Material: PA9T(UL94V-0),Black
- 2. Contact Material: Brass
- 3. Contact Plating: Matte Tin

ELECTRICAL

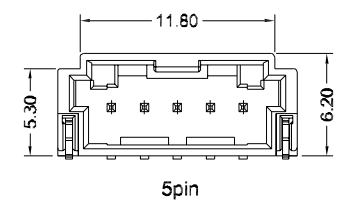
- 1. Current Rating: 3 Amp max
- 2. Withstand Voltage: 500V AC/minute
- 3. Contact Resistance: 10mΩ max
- 4. Insulation Resistance: 1000MΩ min

ENVIRONMENTAL

- 1. Operation Temperature: -45°C to +105°C
- Packing: Tape&Reel



Poles	Dimensions (mm)				
	A	B	C	D	E
02	8.50	7.13	6.30	4.80	2.00
03	10.50	9.13	8.30	6.80	4.00
04	12.50	11.13	10.30	8.80	6.00
05	14.50	13.13	12.30	10.80	8.00
06	16.50	15.13	14.30	12.80	10.00
07	18.50	17.13	16.30	14.80	12.00
08	20.50	19.13	18.30	16.80	14.00
09	22.50	21.13	20.30	18.80	16.00
10	24.50	23.13	22.30	20.80	18.00
11	26.50	25.13	24.30	22.80	20.00
12	28.50	27.13	26.30	24.80	22.00
13	30.50	29.13	28.30	26.80	24.00
14	32.50	31.13	30.30	28.80	26.00
15	34.50	33.13	32.30	30.80	28.00



RECOMMENDED P.C.B LAYOUT
(TOLERANCE:±0.05)

RoHS compliant
Unit:mm

Scale	Free
TOLERANCE	
X.	±0.50
X. X	±0.40
X. XX	±0.25
X. XXX	±0.15
DIM	TOL
X°	±5°
Angle	TOL

①	Drawn	25.04.2020	Winnie
	Modification	Date	Name

	Date	Name
Drawn	25.04.2020	Winnie
Approved	25.04.2020	Winnie
ASSMANN components		

Customer-No.	
ASSMANN WSW-No. A-WBP-K009EAXxSR1	
Drawing-No.	rev00
ASS 8586 CO	SHEET 1/3
Replace	

1

2

3

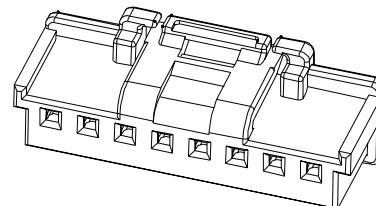
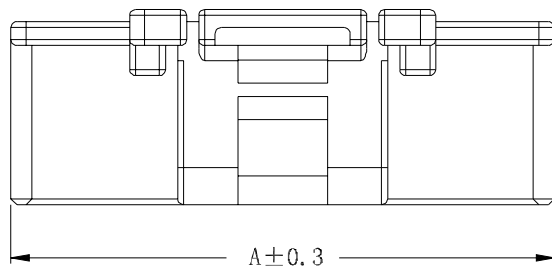
4

5

6

7

A

**NOTES:****MATERIAL**

1. Insulator Material: PA66(UL94V-0), Black

ELECTRICAL

1. Current Rating: 3 Amp max

2. Withstand Voltage: 500V AC/minute

3. Contact Resistance: 10mΩ max

4. Insulation Resistance: 1000MΩ min

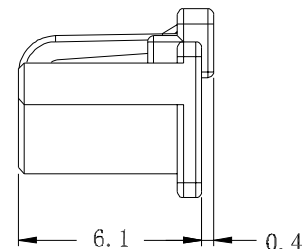
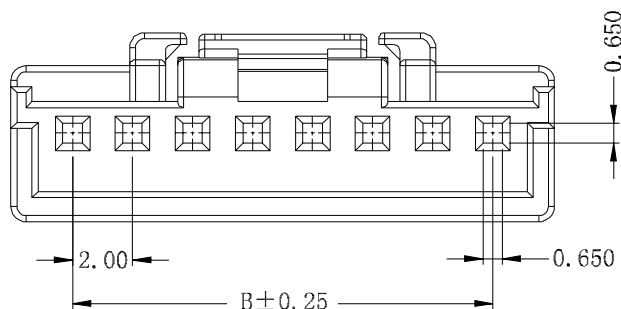
Packing: PE Bag

A

B

B

C



Poles	Dimensions		Poles	Dimensions	
	A	B		A	B
02	8.00	2.00	09	20.10	16.00
03	8.10	4.00	10	22.10	18.00
04	10.10	6.00	11	24.10	20.00
05	12.10	8.00	12	26.10	22.00
06	14.10	10.00	13	28.10	24.00
07	16.10	12.00	14	30.10	26.00
08	18.10	14.00	15	32.10	28.00

C

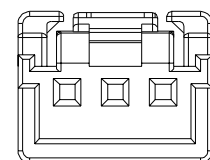
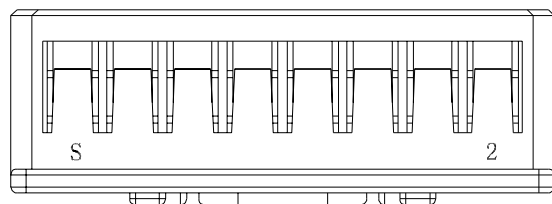
D

D

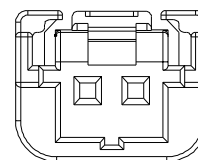
05P~15P Shape
Scale 1:1

E

E



03P~04P Shape
Scale 0.8:1





02P Shape
Scale 0.8:1

F

F

G

RoHS compliant
Unit:mm

Scale	Free				Date	Name	Customer-No.
TOLERANCE					Drawn	25.04.2020	Winnie
X.	±0.50				Approved	25.04.2020	Winnie
X. X	±0.40						
X. XX	±0.25						
X. XXX	±0.15						
DIM	TOL						ASSMANN WSW-No. A-WBH-K009EGxxCB1
X°	±5°	①	Drawn	25.04.2020			
Angle	TOL	Id.	Modification	Date	Name		ASS 8586 CO rev00 SHEET 2/3

G

H

H

1

2

3

4

5

6

7

1 2 3 4 5 6 7

A B C D E F G H

A B C D E F G H

NOTES:

MATERIAL
 1.Contact Material: Phosphor Bronze
 2. Contact Plating :Tin
 ELECTRICAL
 1.Current Rating: 3 Amp max
 2.Withstand Voltage: 500V AC/minute
 3.Contact Resistance: 10mΩ max
 4.Insulation Resistance: 1000MΩ min
 Wire Size: AWG24~AWG30
 OD:1.40mm
 Packing:Reel

SECTION: A-A
SCALE: 1:1

SECTION: B-B
SCALE: 1:1

SECTION: C-C
SCALE: 1:1

RoHS compliant
Unit:mm

Scale	Free				Date	Name	Customer-No.
TOLERANCE					Drawn	25.04.2020	Winnie
X.	±0.50				Approved	25.04.2020	Winnie
X. X	±0.40						
X. XX	±0.25						
X. XXX	±0.15						
DIM	TOL						
X°	±5°	①	Drawn	25.04.2020			
Angle	TOL	Id.	Modification	Date	Name	Replace	SHEET 2/3

ASSMANN WSW-No.
A-WBT-K009EG01CR1

Drawing-No.
ASS 8586 CO rev00

1 2 3 4 5 6 7

SV4880