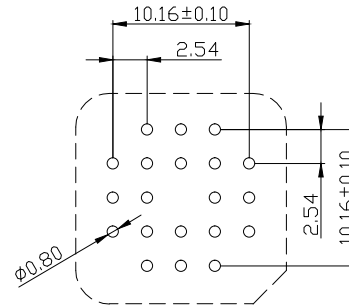
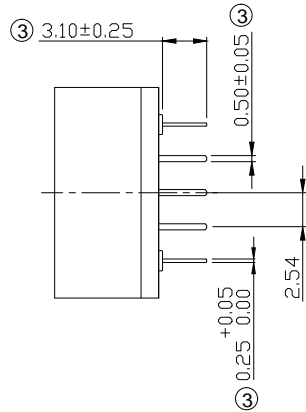
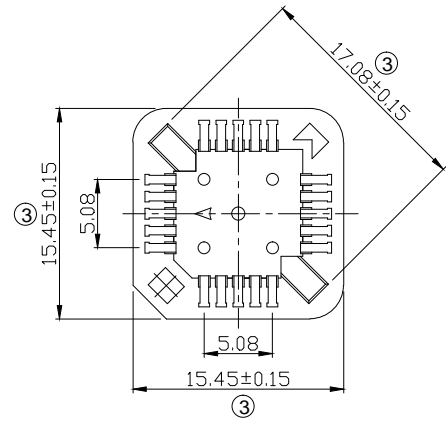
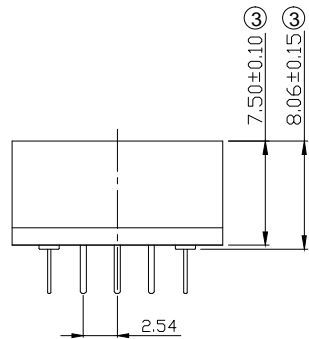


20PIN



Recommended P.C.B Layout



NOTES:

- 1.MATERAIL
 - ③ 1.1 Housing:PPS Glass Fiber filled,UL94 V-0,Black
 - 1.2 Contact:Phosphor Bronze,T=0.25mm
- 2.FINISH
 - ③ 2.1 Contact:Gold flash on contact area,20-200u" Tin on solder area,all over 15-80u" Nickel
- 3.MECHANICAL
 - ③ 3.1 Mating Force:4Kg·f Max.
 - ③ 3.2 Unmating Force:0.70Kg·f Min.
 - ③ 3.3 Durability (mating cycles):200 cycles Min.
- 4.ELECTRICAL
 - ③ 4.1 Rated Current:1.0 Amp
 - ③ 4.2 Rated Voltage:125~250 V
 - ③ 4.3 Withstand Voltage:600V for 1 minute
 - ③ 4.4 Contact Resistance:20mΩ Max.
 - ③ 4.5 Insulation Resistance:1000MΩ Min.
- 5.ENVIRONMENTAL
 - ③ 5.1 Operating Temperature:-40°C To +105°C
 - ③ 5.2 High Temperature Resistance:260±5°C 10S
- 6.Packing:Tube

RoHS compliant
Unit: mm

Scale	Free
TOLERANCE	
X.	±0.50
X.X	±0.20
X.XX	±0.10
Dim	TOL
X°	±1°
Angle	TOL

③	Change the Plant	12.07.2023	Peter	Approved	12.07.2023	Peter
②	Add Pin out Diagrams	02.08.2018	Xavier			
①	Update the plating spec	11.05.2018	Segal			
①	Drawn	29.09.2015	Amy			
Id.	Modification	Date	Name			

Drawn	29.09.2015	Amy
Approved	12.07.2023	Peter

Description. PLCC Socket Connector 20Pin Pitch 1.27mm Straight THT	
ASSMANN WSW-No. A-CCS 020-G-T	
Drawing-No.	rev03
ASS 7007 CO	Sheet 1 / 2
Customer-No.	

1

2

3

4

5

6

7

1

2

3

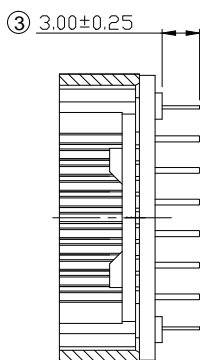
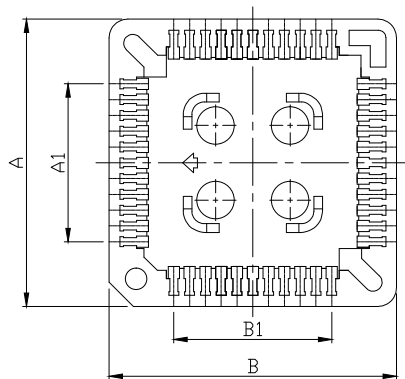
4

5

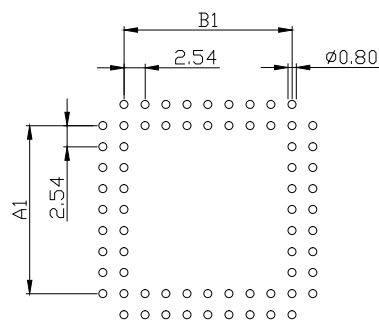
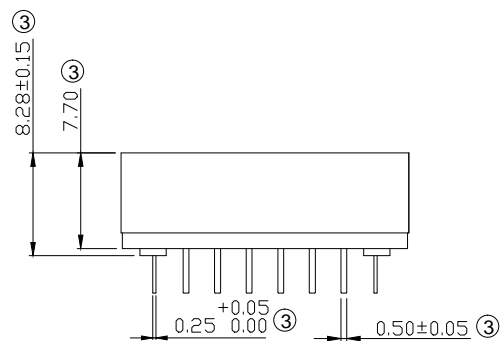
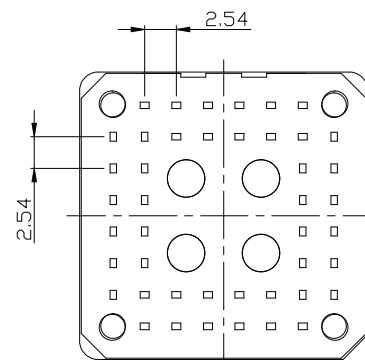
6

7

28-84 PIN



SEC:A-A



Recommended P.C.B Layout

Pin Count	Dimension			
	Dim A	Dim A1	Dim B	Dim B1
28	18.00	7.62	18.00	7.62
32	18.10	7.62	20.65	10.16
44	23.05	12.70	23.05	12.70
52	25.70	15.24	25.70	15.24
68	30.80	20.32	30.80	20.32
84	36.00	25.40	36.00	25.40

RoHS compliant
Unit: mm

Scale Free

TOLERANCE

X. ±0.50

X.X ±0.20

X.XX ±0.10

Dim TOL

X° ±1°

Angle TOL

③

Change the Plant

12.07.2023

Peter

Approved

12.07.2023

Peter

②

Add Pin out Diagrams

02.08.2018

Xavier

①

Update the plating spec

11.05.2018

Segal

⑩

Drawn

29.09.2015

Amy

Id.

Modification

Date

Name

Date

Name

Description. PLCC Socket Connector
20Pin Pitch 1.27mm Straight THT

ASSMANN WSW-No.

A-CCS 0xx-G-T

Drawing-No.

ASS 7007 CO

rev03

Customer-No.

Sheet

2 / 2

ASSMANN
WSW components

1

2

3

4

5

6

7