

Molded SMD Power Inductor



ASPI-8040HS

Request Samples



Check Inventory



8.2 x 8.6 x 3.8 mm
RoHS/RoHS II Compliant
MSL Level = 1

Features

- Shielded construction
- Soft saturation
- High Saturation Current
- Designed for switching frequencies between 100KHz-2MHz

Applications

- DC/DC Switching converters
- Power supplies for Notebooks, workstations, and Servers
- Low Profile applications
- High current, transient load applications
- Applications requiring extended temperature.

Electrical Specifications

Part Number	Inductance	Tolerance	DC Resistance	Saturation Current	Temperature Rise Current
	0.1MHz/1.0V		Max	Typ.	Typ.
Units	μH	%	mΩ	A	A
Symbol	L		DCR	Isat	Irms
ASPI-8040HS-R22	0.22	M, N	1.68	45.0	30.7
ASPI-8040HS-R33	0.33	M, N	2.14	36.0	29.5
ASPI-8040HS-R47	0.47	M, N	2.62	31.5	25.0
ASPI-8040HS-R68	0.68	M, N	3.67	24.5	21.0
ASPI-8040HS-R82	0.82	M, N	4.42	24.2	19.0
ASPI-8040HS-1R0	1.0	M, N	5.78	24.0	18.0
ASPI-8040HS-2R2	2.2	M, N	13.7	23.0	10.5
ASPI-8040HS-3R3	3.3	M, N	17.7	20.0	9.2
ASPI-8040HS-4R7	4.7	M, N	32.0	16.7	7.25
ASPI-8040HS-5R6	5.6	M, N	35.5	15.0	6.8
ASPI-8040HS-6R8	6.8	M, N	47.7	15.2	5.7
ASPI-8040HS-8R2	8.2	M, N	50.8	10.0	5.5
ASPI-8040HS-100	10	M, N	59.9	9.0	5.2

Test Conditions

Isat: DC current at which the inductance drops 20% from its value.

Irms: DC current that causes the temperature rise (ΔT , approximate 40 °C) from 20°C ambient

Operating Temperature: -40°C ~ +125°C (including self-temperature rise)

Storage Condition: -10°C ~ +40°C and R.H. 60 max

Operating Voltage: 75V (across inductor)

ASPI-8040HS Series is RoHS Compliant and Pb free

MSL level: 1



5101 Hidden Creek Ln Spicewood TX 78669
Phone: 512-371-6159 | Fax: 512-351-8858
For terms and conditions of sales, please visit:
www.abracon.com

REVISED: 06-27-23

ABRACON IS
ISO9001-2015
CERTIFIED

Molded SMD Power Inductor



ASPI-8040HS

Request Samples

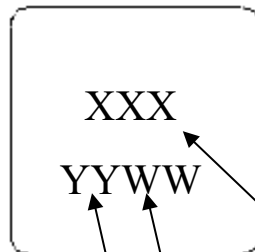


Check Inventory



8.2 x 8.6 x 3.8 mm
RoHS/RoHS II Compliant
MSL Level = 1

Marking



Inductance Code

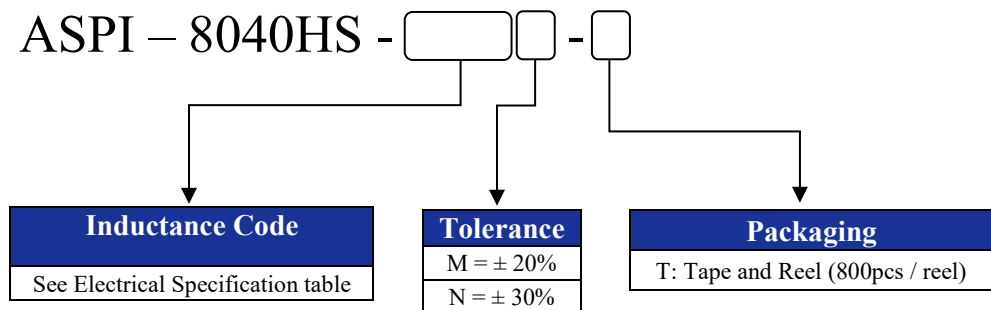
e.g. 5R6

W: Week: E.g. 05 for the 5th week of the year.

Y: Year: E.g. 20 for 2020

Marking Method: Ink

Part Identification



Molded SMD Power Inductor



ASPI-8040HS

Request Samples

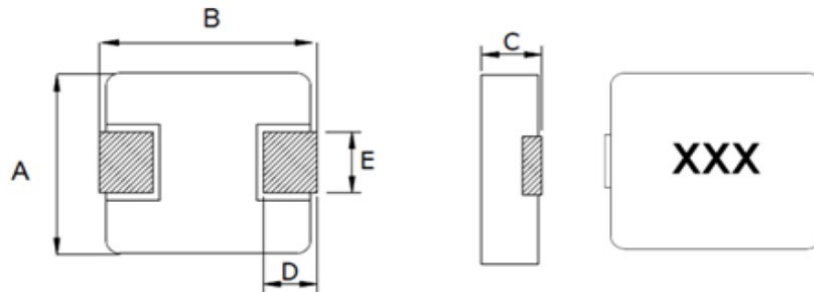


Check Inventory



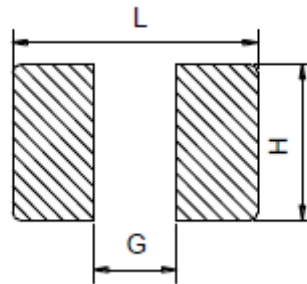
8.2 x 8.6 x 3.8 mm
RoHS/RoHS II Compliant
 MSL Level = 1

Mechanical Dimensions



Series	A	B	C	D	E
ASPI-8040HS	8.2 ± 0.3	8.6 ± 0.3	3.8 ± 0.2	1.5 ± 0.3	5.0 ± 0.2

Recommended Land Pattern



L	G	H
9.6 Ref.	4.8 Ref.	5.3 Ref.

Molded SMD Power Inductor



ASPI-8040HS

Request Samples

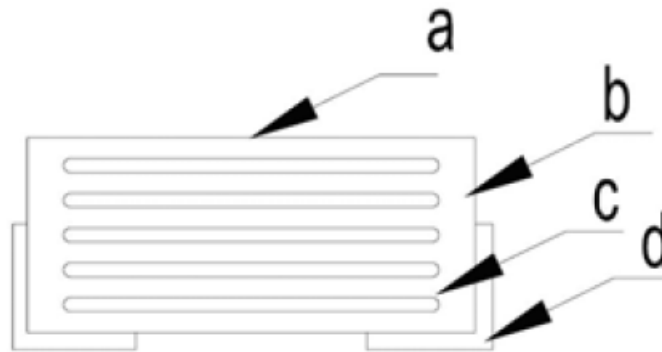


Check Inventory



8.2 x 8.6 x 3.8 mm
RoHS/RoHS II Compliant
MSL Level = 1

Materials



	Components	Material
a	Marking	Ink (black)
b	Core	Metal Alloy
c	Wire	Polyurethane Copper Wire
d	Terminal	Copper plated with Sn

Molded SMD Power Inductor



ASPI-8040HS

Request Samples

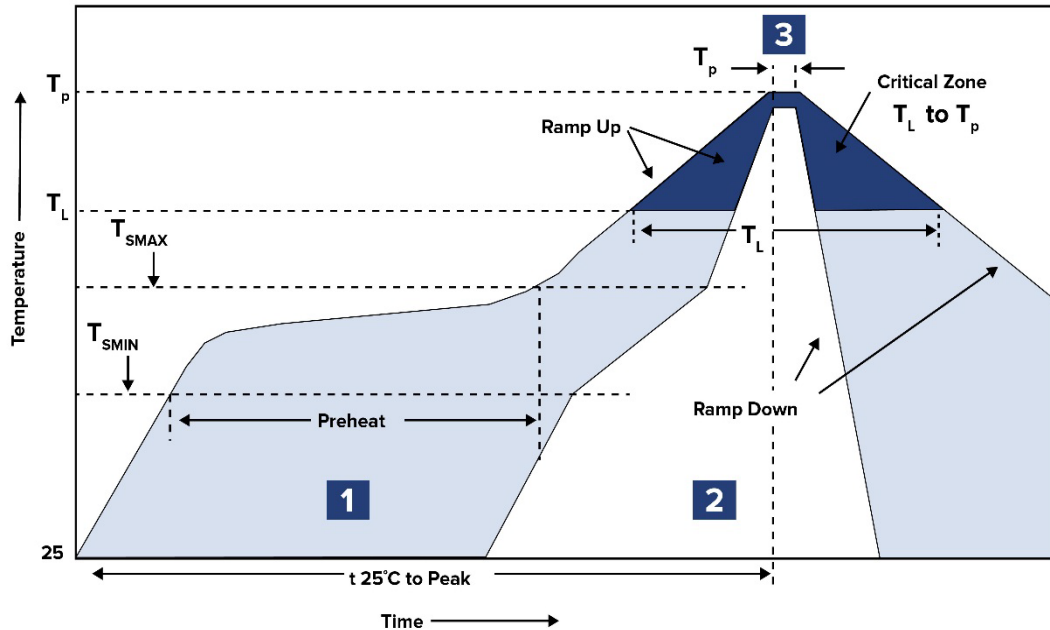


Check Inventory



8.2 x 8.6 x 3.8 mm
RoHS/RoHS II Compliant
 MSL Level = 1

Reflow Profile



Zone	Description	Temperature	Times
1	Preheat	$T_{SMIN} \sim T_{SMAX}$ 150°C ~ 200°C	60 ~ 120 sec.
2	Reflow	T_L 217°C	60 ~ 90 sec.
3	Peak heat	T_P 260°C±5°C	10 sec. MAX

Molded SMD Power Inductor



ASPI-8040HS

Request Samples



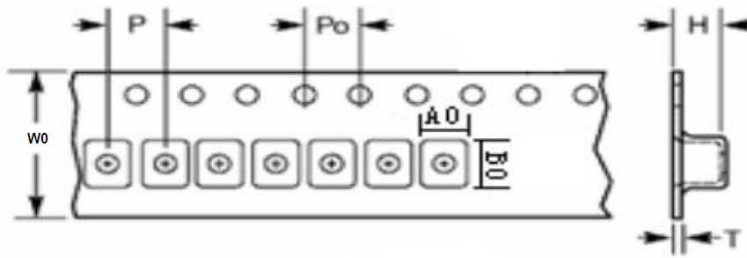
Check Inventory



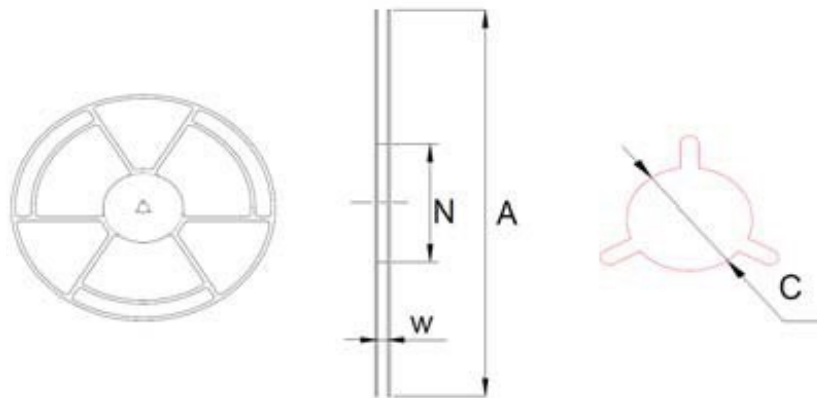
8.2 x 8.6 x 3.8 mm
RoHS/RoHS II Compliant
 MSL Level = 1

Packaging

Packing (Tape & Reel: 800 pcs/reel)



W0	P	P0	H	T	A0	B0
16±0.3	12±0.1	4±0.1	4.3±0.1	0.35±0.05	8.45±0.1	9.65±0.1



A	N	C	W
330±2.0	100±2.0	13±1.0	16.4±2.0

Dimension: mm

ATTENTION: Abracon LLC's products are COTS – Commercial-Off-The-Shelf products; suitable for Commercial, Industrial and, where designated, Automotive Applications. Abracon's products are not specifically designed for Military, Aviation, Aerospace, Life-dependent Medical applications or any application requiring high reliability where component failure could result in loss of life and/or property. For applications requiring high reliability and/or presenting an extreme operating environment, written consent and authorization from Abracon LLC is required. Please contact Abracon LLC for more information.



5101 Hidden Creek Ln Spicewood TX 78669
 Phone: 512-371-6159 | Fax: 512-351-8858
 For terms and conditions of sales, please visit:
www.abracon.com

REVISED: 06-27-23

ABRACON IS
 ISO9001-2015
 CERTIFIED