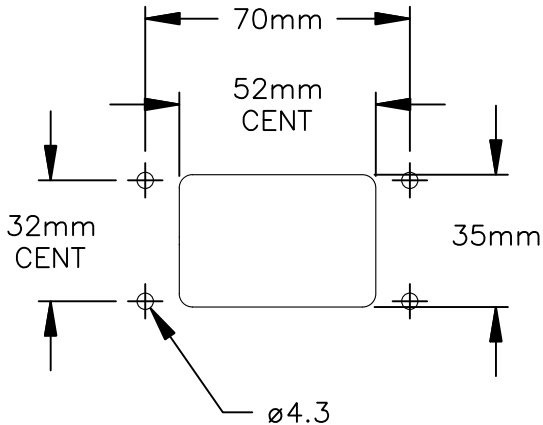
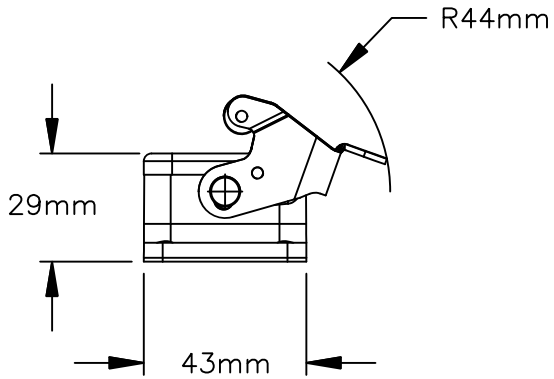
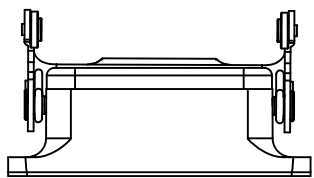
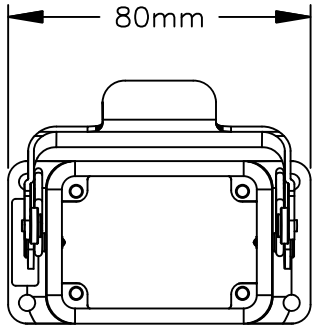


CHARACTERISTISTS		
NUMBER OF CONTACTS	INSERT	6 + PE
TERMINATION	INSERT	SCREW
WIRE GAUGE	INSERT	0.25–2.5mm²
FLAMMABILITY	INSERT	V–0
IP DEGREE OF PROTECTION	SHELL	IP65
ELECTRICAL CHARACTERISTISTS (INSERT)		
RATED VOLTAGE	DIN EN 60664–1	500V (600V UL/CSA)
RATED IMPULSE VOLTAGE	DIN EN 60664–1	6000V
RATED CURRENT AT 40°C		22A
VOLTAGE PROOF	DIN EN 60512–2, TEST 4a	2.800V
INSTALLATION CATEGORY	DIN EN 60664–1	III
INSULATION GROUP	DIN EN 60664–1	IIIb
INSULATION RESISTANCE	DIN EN 60512–2, TEST 3a	>10 <sup>12</sup> OHMS
CONTACT RESISTANCE	DIN EN 60512–2, TEST 2a	<5m OHMS
CLEARANCE	DIN VDE 0627	>4.0mm
CREEPAGE	DIN VDE 0627	>6.3mm
CURRENT CARRYING CAP.	DIN EN 60512–3, TEST 5b	DERATED
POLLUTION DEGREE	DIN EN 60664–1	3
MECHANICAL CHARACTERISTISTS		
INSERTION FORCE	DIN EN 60512–13–2, TEST 13b	20–30N
WITHDRAWAL FORCE	DIN EN 60512–13–2, TEST 13b	20–30N
MECHANICAL LIFETIME	IEC 60512–5, TEST 9a	>500 MATING CYCLES
CLIMATICAL CHARACTERISTISTS		
TEMPERATURE RANGE		–40°C TO 100°C
UPPER TEMPERATURE		100°C/1000H
LOWER TEMPERATURE		–40°C/16H
MATERIALS		
INSERT		PC GV
COLOR		GRAY
CONTACT PLATING		SILVER
KNURLED SCREW AND NUT		CuZn
GASKET		NBR

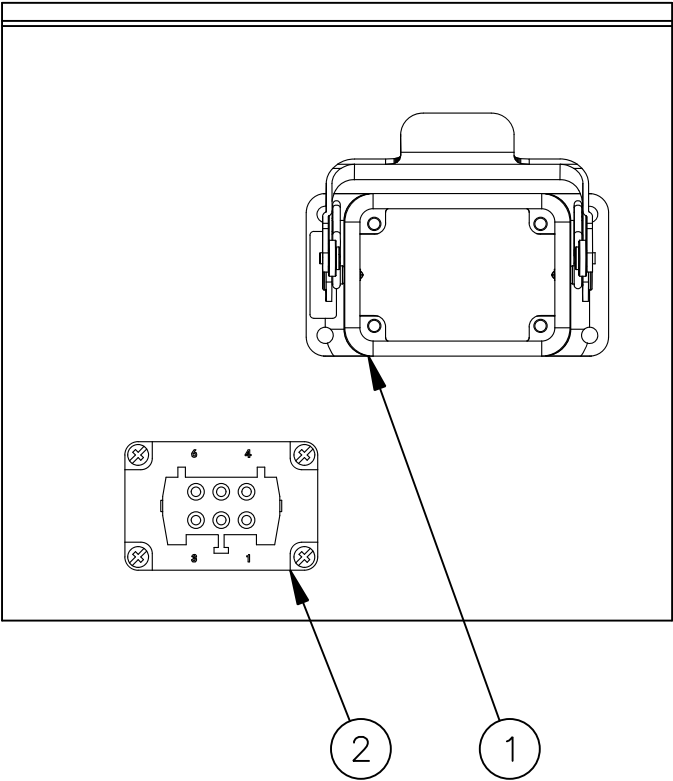
C146 10E 006 9401



PANEL CUTOUT

REVISIONS					
REV	ECD	DESCRIPTION	DATE	BY	APPR
01	–	CUSTOMER DRAWING	–	–	–

ILLUSTRATION: COMPLETE KIT



1	C14610B0061021	INSERT, FEMALE, 6POS	2
1	C14610F0060001	RECEPTACLE, SIZE 6	1
QUANTITY	PART NUMBER	DESCRIPTION	ITEM

MATERIALS LIST			
UNLESS OTHERWISE SPECIFIED		SIGNATURES	DATE
1) All dimensions are in metric(mm).		DRAWN: MRF	110CT13
2) Tolerances are as follows:		CHECKED:	
1 PL DEC ±0.30		ENGINEER:	
2 PL DEC ±0.15		APPROVAL:	
3 PL DEC ±0.08		CUSTOMER:	
3) Note reference =		THIS DRAWING IS SUPPLIED FOR INFORMATION ONLY. DESIGN FEATURES, SPECIFICATIONS AND PERFORMANCE DATA SHOWN HEREON ARE THE PROPERTY OF THE AMPHENOL CORPORATION. NO RIGHTS OF REPRODUCTION ARE IMPLIED. ALL DIMENSIONS ARE SUBJECT TO NORMAL MANUFACTURING VARIATIONS.	
MATERIAL SPECIFICATIONS:		KIT, HEAVYMATE	
PROCESS SPECIFICATIONS:		SIZE B C- DWG NO: C14610E0069401 REVISION 01	
NEXT ASSY:		SCALE: NONE SHEET 1 OF 1	

TITLE:	KIT, HEAVYMATE	DWG NO:	C14610E0069401	REV:	01	SH:	1	DF:	1
--------	----------------	---------	----------------	------	----	-----	---	-----	---