



ANATECH ELECTRONICS INC
RF & Microwave Filters & Products

15 MHz Low Pass Filter

Part Number: AE15L9256



Electrical Specifications

Cutoff Frequency: 15 MHz
Passband(PB): DC-15 MHz
Insertion Loss in PB: 0.5 dB Max.
Return Loss in PB: 16 dB Min.
Rejection: 50dB Min. @ 19.5-150 MHz
Power Handling: 70 W CW
Input/output Impedance: 50 Ohms

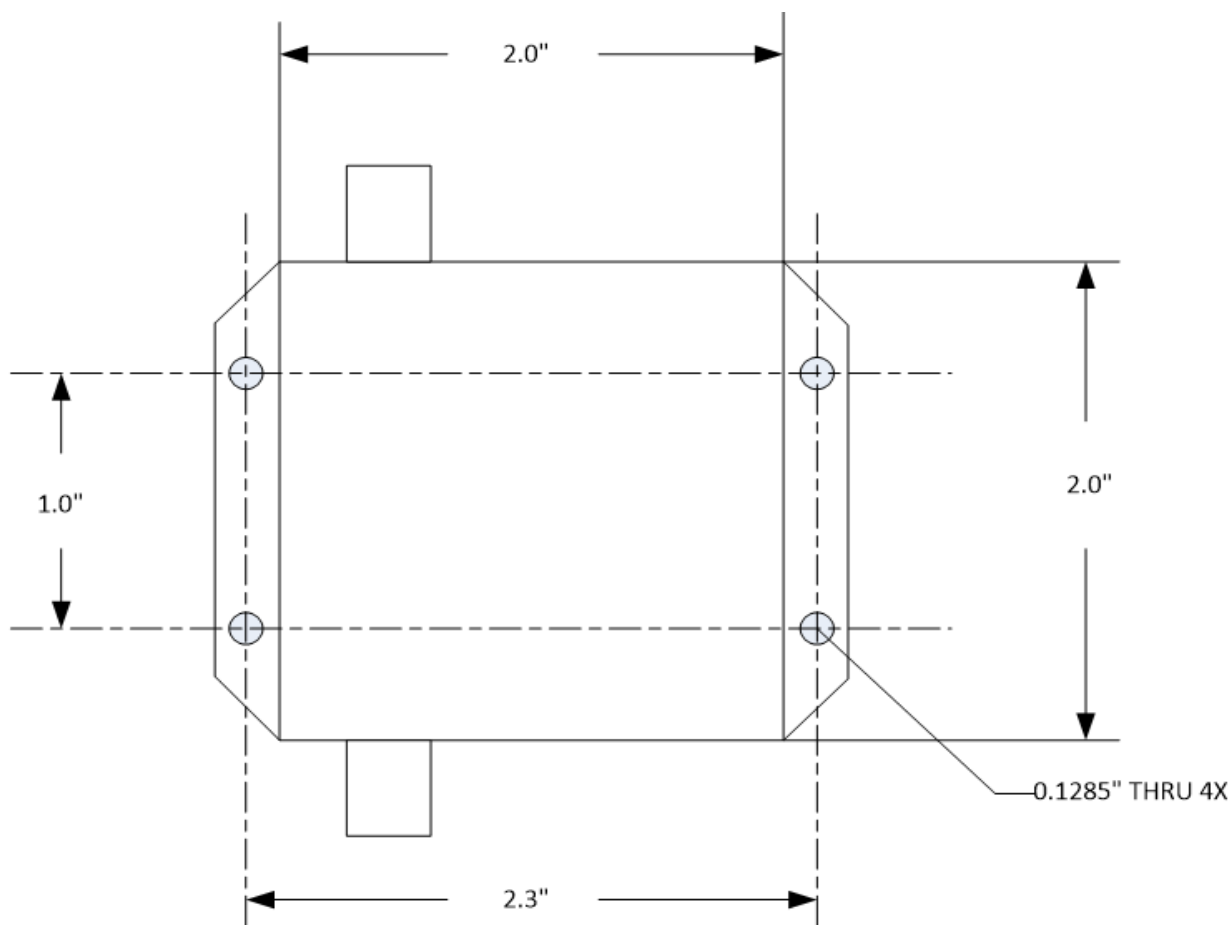
Mechanical

Mounting Method: Flanged Through Holes
Connector Type: BNC(F)
Dimensions: 2.0 X 2.0 X 1.6 In.

Environmental

Operating Temperature: -40° C to +70° C
Storage Temperature: -55° C to +95° C
Shock: 10 G.11ms
Vibration: 10 G. 5 to 200Hz

Outline Drawing:



Tolerance: +/-0.01 inches [+/- 0.3mm]

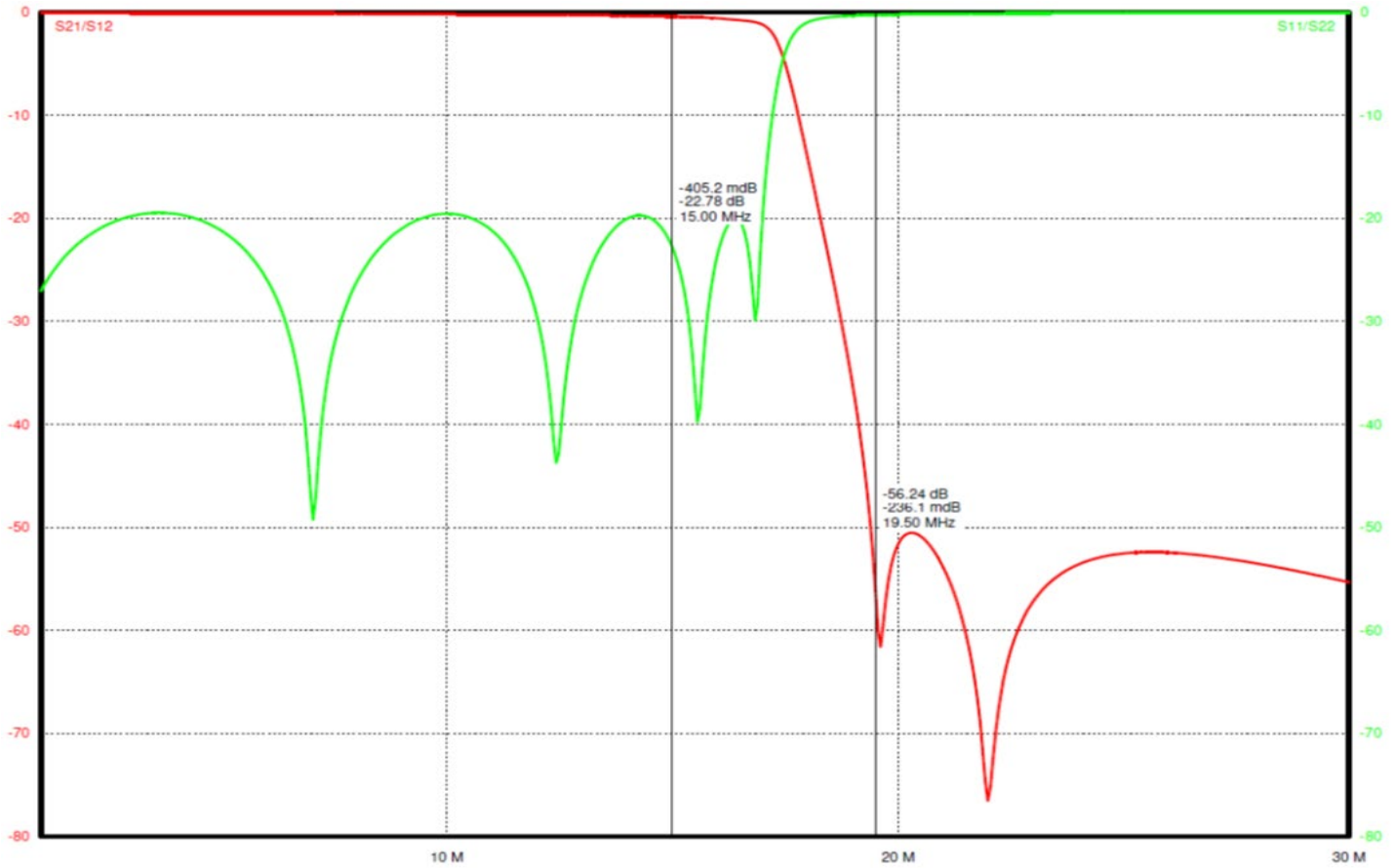
Angles: +/- 1 Deg.

*Tolerance as shown unless otherwise specified in the datasheet electrical specification tables above.

*When max dimensions are called out the above tolerances do not apply as long as it is under the max call out.



Simulation Plot:



Note: This is a simulated response plot. Actual performance might differ.