



912 MHz Cavity Bandpass Filter

Part Number: AB912B611



ANATECH ELECTRONICS INC
RF & Microwave Filters & Products

Electrical Specifications

Center Frequency: 912.5 MHz
6 dB Xk JXk : 19 MHz
Pass Band: 903-922 MHz
Passband Ripple: 1 dB max
Insertion loss: 1.6 dB max
Rejection 1: 40 dB @ 895 MHz
Rejection 2: 40 dB @ 929 MHz
CW Power : 30 Watts

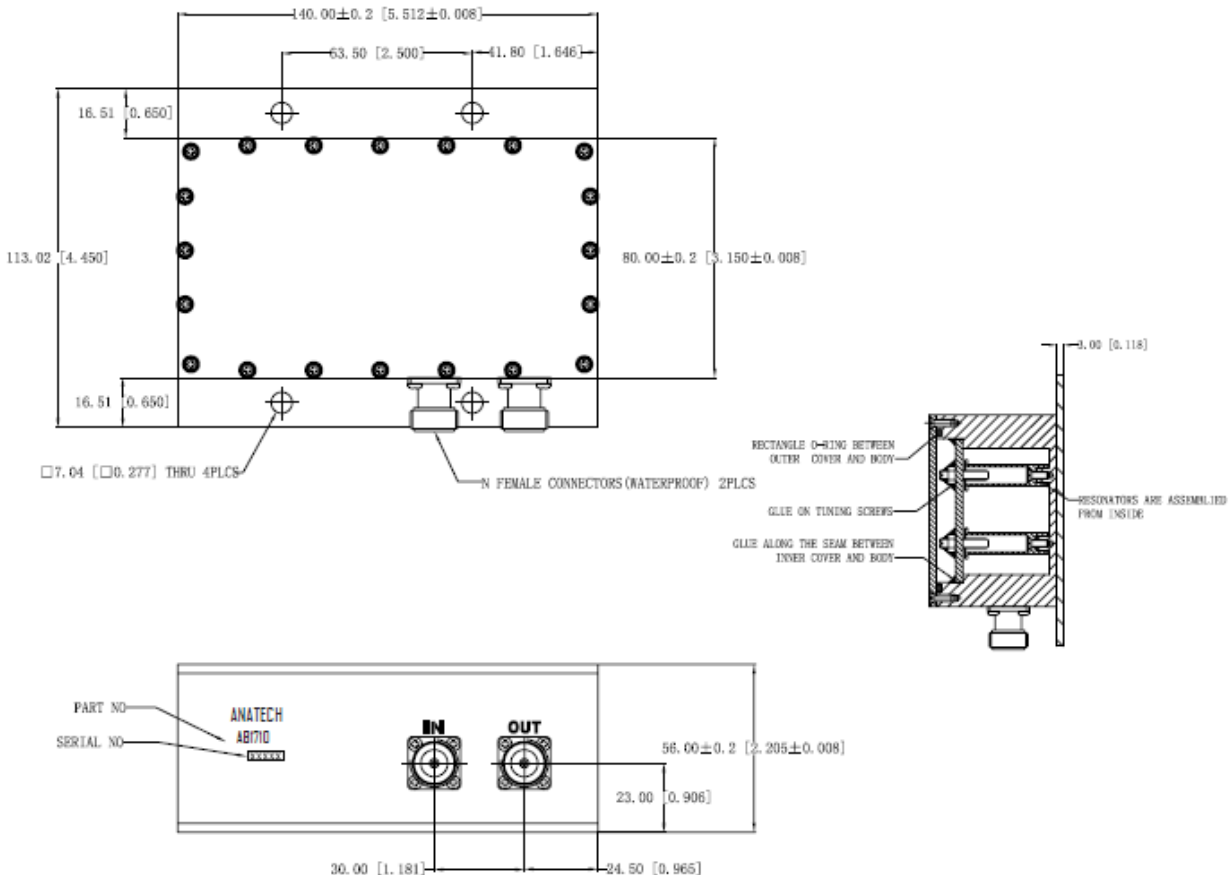
Mechanical

Mounting Method: Threaded Mounting Holes
Connector Type: N Female
Dimensions: 5.12" X 4.45" X 2.20" in

Environmental

Operating Temperature: -45 to +85° C
Storage Temperature: -55 to +95° C
Shock: 20 G. 11ms
Vibration: 20 G. 5 to 200 MHz

Outline Drawing:



NOTES:

1. Enclosure is waterproof
2. Paint: Black epoxy