

NOTES:

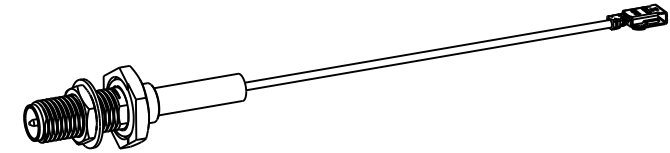
1. MATERIALS AND FINISHES:
 RP SMA STR BHD JACK IP 67 - BRASS, GOLD PLATING

MHF-1-LK RA PLUG:
 HOUSING - PBT, BLACK
 CONTACT & GROUND CONTACT - PHOSPHOR BRONZE, SILVER PLATING
 CABLE - 1.13 MM CABLE

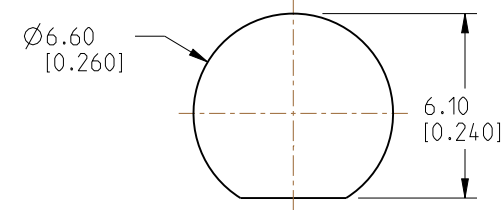
2. ELECTRICAL:
 A. IMPEDANCE: 50 OHM

3. PACKAGING:
 A. QUANTITY: SINGLE PACK
 B. MARKING: BAG TO BE MARKED
 "AMPHENOL RF, 95-902-587-XXX AND DATE CODE"

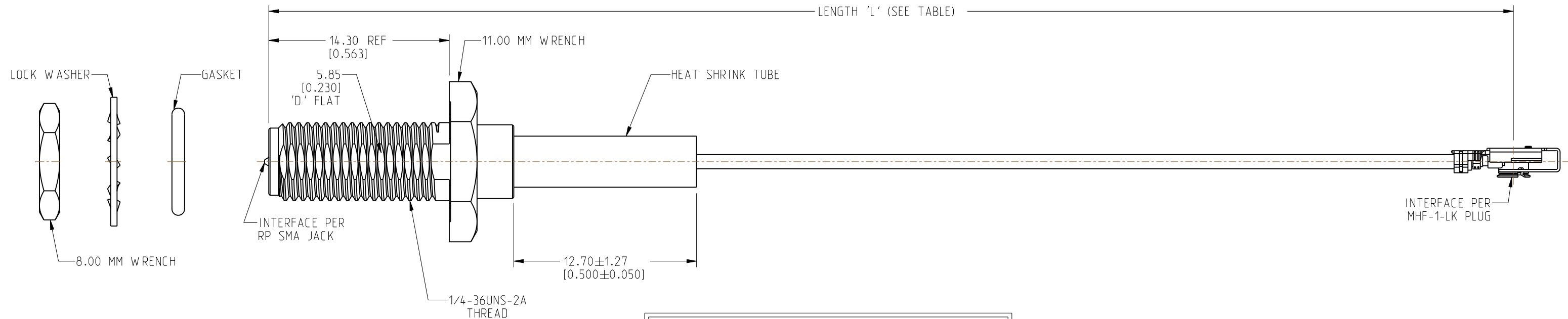
REVISIONS				
REV	DESCRIPTION	DATE	ECN	BY
A	RELEASE TO MFG.	21-FEB-23	16577	SG



SCALE 0.900



RECOMMENDED MOUNTING HOLE DIMENSIONS



LENGTH TABLE	
PART NUMBER (METRIC)	LENGTH 'L' AND TOLERANCE IN MM (INCHES)
95-902-587-050	50.00 ± 3.81 [1.969 ± 0.150]
95-902-587-100	100.00 ± 3.81 [3.937 ± 0.150]
95-902-587-150	150.00 ± 3.81 [5.906 ± 0.150]
95-902-587-200	200.00 ± 5.08 [7.874 ± 0.200]
95-902-587-250	250.00 ± 5.08 [9.843 ± 0.200]
95-902-587-300	300.00 ± 5.08 [11.811 ± 0.200]
95-902-587-400	400.00 ± 5.08 [15.748 ± 0.200]

DESIGN REQUIREMENTS:

- | | |
|---|--|
| <input checked="" type="checkbox"/> FREQUENCY: DC - 6 GHz | <input checked="" type="checkbox"/> CONTINUITY |
| <input type="checkbox"/> VSWR: _____ MAX. | <input checked="" type="checkbox"/> HI-POT: 200 VRMS |
| <input type="checkbox"/> INS. LOSS: _____ dB MAX. | <input type="checkbox"/> OTHER: |

CUSTOMER OUTLINE DRAWING

ALL OTHER SHEETS ARE FOR INTERNAL USE ONLY

NOTICE: These drawings, specifications, or other data (1) are, and remain the property of Amphenol corp. (2) must be returned upon request; and (3) are confidential and not to be disclosed to any person other than those to whom they are given by Amphenol Corp. The furnishing of these drawings, specifications, or other data by Amphenol Corp., or to any other person to anyone for any purpose is not to be regarded by implication or otherwise in any manner licensing, granting rights to permitting such holder or any other person to manufacture, use or sell any product, process or design, patented or otherwise, that may in any way be related to or disclosed by said drawings, specifications, or other data.

UNLESS OTHERWISE SPECIFIED DIMENSIONS ARE METRIC (INCHES) AND TOLERANCES ARE:
 <0.5mm = ±0.05mm [$<0.020 = \pm 0.002$]
 0.5 - 6mm = ±0.1mm [$0.020 - 0.236 = \pm 0.004$]
 >6.00 - 30mm = ±0.2mm [$0.236 - 1.181 = \pm 0.008$]
 >30.00 - 120mm = ±0.3mm [$1.181 - 4.725 = \pm 0.012$]

MATERIAL: SEE NOTES
 ENGR.1: SIVA
 ENGR.2:
 DATE: 27-DEC-22

TITLE: RP SMA STR BHD JACK IP 67 TO MHF-1-LK RA PLUG USING 1.13 MM CABLE VARIOUS LENGTH
 SHEET NO. 2 OF 2
 SCALE: 3.3:1.0

Amphenol RF		SIZE: B	DRAWING NO. 95-902-587-XXX	REV: A
			ITEM NO. 95-902-587-XXX	
			PART NO. 95-902-587-XXX	

THIRD ANGLE PROJ.

REFERENCE

EAR# 11658

ANGLES = ±1°

ENGR.1 SIVA

ENGR.2

DATE 27-DEC-22

SHEET NO. 2 OF 2

SCALE: 3.3:1.0

SIZE B

DRAWING NO. 95-902-587-XXX
 ITEM NO. 95-902-587-XXX
 PART NO. 95-902-587-XXX

REV: A