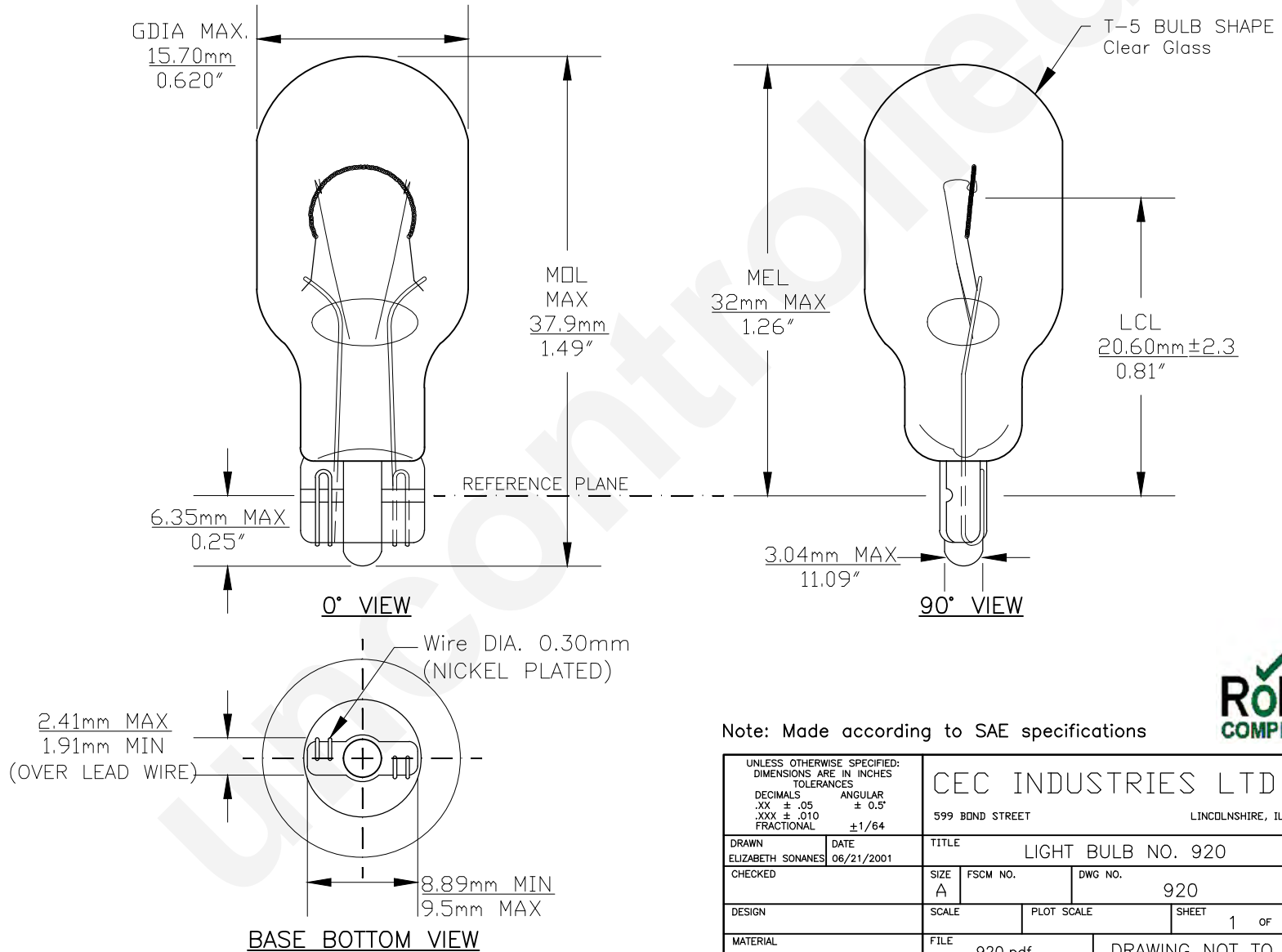




PART NO.	BASE TYPE	DESIGN VOLTS	DESIGN AMPS	MSCD	FILAMENT TYPE	AVERAGE LIFE HOURS	REVISIONS			
							REV #	DESCRIPTION	DATE	APPROVED
920	Glass Wedge (T-5) W2.1x9.2d	12.8V	1.20±10%	10±20%	C-2F	1,200	1	ISSUED	06/21/2001	E.S.
							2	ADDITIONAL DIMENSIONS, AMP, MSCP TOLERANCE	04/09/2010	D.C.
							3	ADDITION OF 90° VIEW	04/04/2016	R.M.



Note: Made according to SAE specifications



UNLESS OTHERWISE SPECIFIED: DIMENSIONS ARE IN INCHES TOLERANCES		CEC INDUSTRIES LTD	
DECIMALS .XX ± .05	ANGULAR .XXX ± .010	599 BOND STREET LINCOLNSHIRE, IL 60069	
FRACTIONAL ±1/64		TITLE LIGHT BULB NO. 920	
DRAWN ELIZABETH SONANES	DATE 06/21/2001	SIZE A	REV 3
CHECKED		FSCM NO.	DWG NO. 920
DESIGN	SCALE	PLOT SCALE	SHEET 1 OF 1
MATERIAL	FILE 920.pdf	DRAWING NOT TO SCALE	