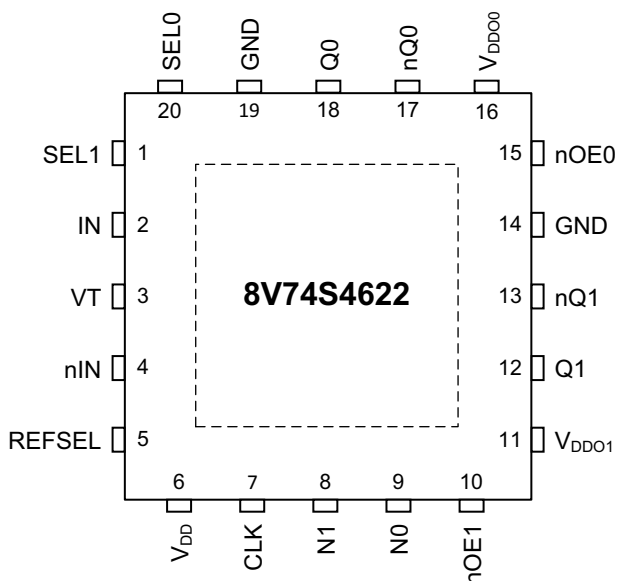


### General Description

The 8V74S4622 is a versatile Clock Fanout Buffer/Frequency Divider. The device supports the selection, division and distribution of high-frequency clock signals with very low additive phase noise. The 8V74S4622 uses SiGe technology for an optimum of high clock frequency and low phase noise performance, combined with high power supply noise rejection and internal isolation.

Two selectable inputs are supported for differential and single ended clocks. Each of the two outputs can select a copy or a frequency-divided input signal. The available frequency divisions are divide-by-2, 4, 5 and 8. Both outputs support LVDS interfaces. For each of the two outputs, a synchronous output enabled control is implemented for stopping the output clock synchronously to the input clock signal. All device configurations are through a logic pin interface. The device is packaged in a lead-free (RoHS 6) 20-lead VFQFN package. The extended temperature range supports wireless infrastructure, telecommunication and networking end equipment requirements. The device is a member of the high-performance clock family from IDT.

### Pin Assignment

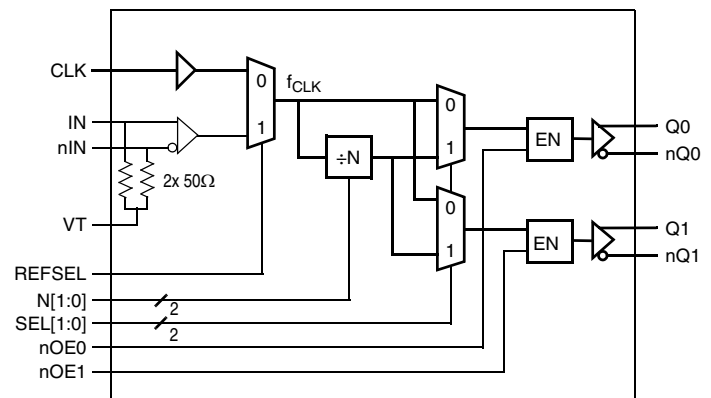


20-pin, 4mm x 4mm VFQFN Package

### Features

- Clock signal selection, frequency-division and distribution
- Two outputs individually select:
  - The input signal  $\div 2$ ,  $\div 4$ ,  $\div 5$  and  $\div 8$  or
  - The input signal without frequency division (input signal is passed through)
- Two inputs to support single-ended and differential operation
- Differential input supports LVDS and LVPECL signals
- Single-ended input supports LVC MOS signals
- Two differential LVDS outputs
- Maximum Input Frequency (differential input clock): 2000MHz
- Maximum Output Frequency: 2000MHz
- Output skew: 22ps (maximum)
- Additive phase noise RMS, 125MHz, SELn = 0, 12kHz - 20MHz integration range: 180fs (maximum)
- LVDS output rise/fall time: 260ps (maximum)
- 3.3V core and output supply voltages
- -40°C to 85°C ambient operating temperature
- Lead-free (RoHS 6) 4x4 mm<sup>2</sup> 20-lead VFQFN packaging

### Block Diagram



## Pin Descriptions and Characteristics

**Table 1. Pin Descriptions<sup>1</sup>**

| Number | Name              | Type   |          | Description   |
|--------|-------------------|--------|----------|---|
| 1      | SEL1              | Input  | Pulldown | Function select control input. LVCMOS 3.3V interface. See <a href="#">Table 3B</a> for function.  |
| 2      | IN                | Input  |          | Differential clock signal non-inverting differential input. Internal termination 50Ω.   |
| 3      | VT                |        |          | Differential clock input termination pin for built-in 50Ω termination interface. See the application information for terminating LVDS and LVPECL input signals. |
| 4      | nIN               | Input  |          | Differential clock signal inverting differential input. Internal termination 50Ω.   |
| 5      | REFSEL            | Input  | Pulldown | Input select control input. LVCMOS 3.3V interface. See <a href="#">Table 3A</a> for function.   |
| 6      | V <sub>DD</sub>   | Power  |          | Positive supply voltage (3.3V).   |
| 7      | CLK               | Input  | Pulldown | Single-ended LVCMOS 3.3V clock signal input.  |
| 8      | N1                | Input  | Pullup   | Frequency divider control input. LVCMOS 3.3V interface.   |
| 9      | N0                | Input  | Pulldown | See <a href="#">Table 3C</a> for function.  |
| 10     | nOE1              | Input  | Pullup   | Output Q1 enable control input. LVCMOS 3.3V interface. See <a href="#">Table 3D</a> for function.   |
| 11     | V <sub>DDO1</sub> | Power  |          | Positive supply voltage (3.3V) for the Q1 output.   |
| 12     | Q1                | Output |          | Differential clock output 1. LVDS interface signals.  |
| 13     | nQ1               | Output |          |   |
| 14     | GND               | Power  |          | Ground supply voltage (0V). Connect to board GND.   |
| 15     | nOE0              | Input  | Pullup   | Output Q0 enable control input. LVCMOS 3.3V interface. See <a href="#">Table 3D</a> for function.   |
| 16     | V <sub>DDO0</sub> | Power  |          | Positive supply voltage (3.3V) for the Q0 output.   |
| 17     | nQ0               | Output |          | Differential clock output 0. LVDS interface signals.  |
| 18     | Q0                | Output |          |   |
| 19     | GND               | Power  |          | Ground supply voltage (0V). Connect to board GND.   |
| 20     | SEL0              | Input  | Pulldown | Function select control input. LVCMOS 3.3V interface. See <a href="#">Table 3B</a> for function.  |
| —      | GND               | Power  |          | Exposed package ground supply voltage (GND). Connect to board GND.  |

NOTE: 1. *Pullup* and *Pulldown* refer to internal input resistors. See [Table 2, Pin Characteristics](#), for typical values.

**Table 2. Pin Characteristics**

| Symbol                | Parameter               | Test Conditions | Minimum | Typical | Maximum | Units |
|-----------------------|-------------------------|-----------------|---------|---------|---------|-------|
| C <sub>IN</sub>       | Input Capacitance       |                 |         | 2       |         | pF    |
| R <sub>PULLUP</sub>   | Input Pullup Resistor   |                 |         | 50      |         | kΩ    |
| R <sub>PULLDOWN</sub> | Input Pulldown Resistor |                 |         | 50      |         | kΩ    |

# Logic Truth Tables

**Table 3A. Input Signal Source Select<sup>1</sup>**

| REFSEL      | Input Selection              |
|-------------|------------------------------|
| 0 (default) | LVC MOS input (CLK)          |
| 1           | Differential input (IN, nIN) |

NOTE: 1. Asynchronous control

**Table 3B. Function Select<sup>1</sup>**

| SEL0        | SEL1        | Q0               | Q1               |
|-------------|-------------|------------------|------------------|
| 0 (default) | 0 (default) | $f_{CLK}$        | $f_{CLK}$        |
| 0           | 1           | $f_{CLK}$        | $f_{CLK} \div N$ |
| 1           | 0           | $f_{CLK} \div N$ | $f_{CLK}$        |
| 1           | 1           | $f_{CLK} \div N$ | $f_{CLK} \div N$ |

NOTE: 1. Asynchronous control.  $f_{CLK}$  is the selected input clock signal, N is the selected clock frequency divider.

**Table 3C. Frequency Divider N Select<sup>1</sup>**

| N1          | N0          | N Divider |
|-------------|-------------|-----------|
| 0           | 0           | $\div 2$  |
| 0           | 1           | $\div 4$  |
| 1 (default) | 0 (default) | $\div 5$  |
| 1           | 1           | $\div 8$  |

NOTE: 1. Asynchronous control.

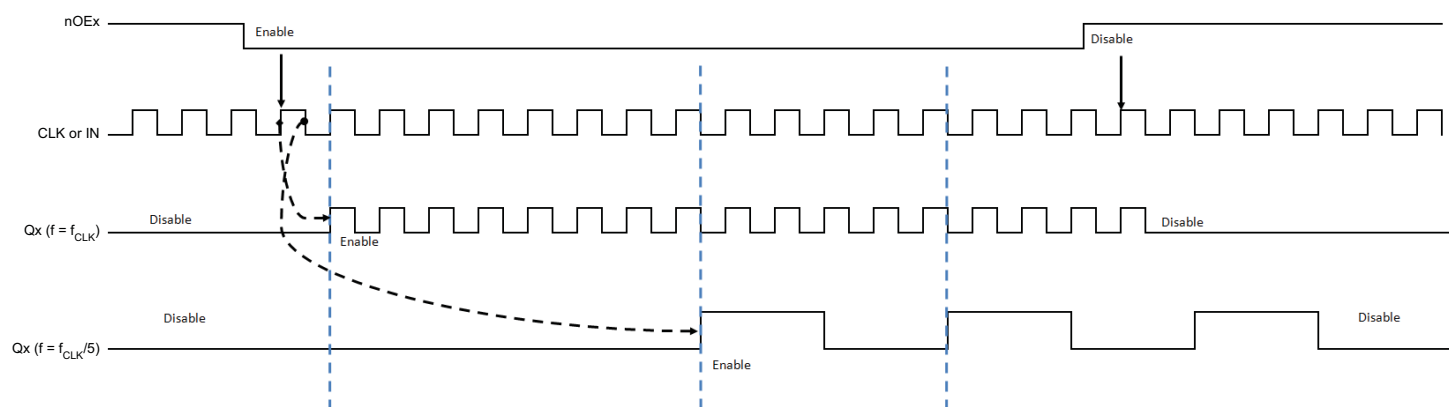
**Table 3D. Output Q0 and Q1 Enable<sup>1 2</sup>**

| nOE0, nOE1  | Q0, Q1 State                         |
|-------------|--------------------------------------|
| 0           | Enabled                              |
| 1 (default) | Disabled (output in logic low state) |

NOTE: 1. Individual setting for each output Q0, Q1.

NOTE: 2. Synchronous to the clock signal to prevent runt pulses.

See [Figure 1](#)



**Figure 1. Synchronous Output Enable Timing Diagram**

**Table 3E. Synchronous Output Enable Timing**

| Divider      | Max. Output Enable/Disable Delay (IN/ nIN or CLK to any Output), Measured in Number of Input Clock Pulses |
|--------------|---|
| pass-through | 1   |
| $\div 2$     | 4   |
| $\div 4$     | 7   |
| $\div 5$     | 9   |
| $\div 8$     | 16  |

## Absolute Maximum Ratings

NOTE: Stresses beyond those listed under *Absolute Maximum Ratings* may cause permanent damage to the device. These ratings are stress specifications only. Functional operation of the product at these conditions or any conditions beyond those listed in the *DC Characteristics* or *AC Characteristics* is not implied. Exposure to absolute maximum rating conditions for extended periods may affect product reliability.

**Table 4. Absolute Maximum Ratings**

| Item   | Rating                   |
|--|--------------------------|
| Supply Voltage, $V_{DD}$                                     | 4.6V                     |
| Inputs   | -0.5V to $V_{DD} + 0.5V$ |
| Outputs, $I_O$ (LVDS)<br>Continuous Current<br>Surge Current | 10mA<br>15mA             |
| Input Current $I_{IN}$ , $nI_{IN}$                           | $\pm 50mA$               |
| $V_T$ Current ( $I_{VT}$ )                                   | $\pm 100mA$              |
| Maximum Junction Temperature                                 | 125°C                    |
| Storage Temperature  | -65°C to 125°C           |
| ESD - Human Body Model <sup>1</sup>                          | 2000V                    |
| ESD - Charged Device Model <sup>1</sup>                      | 500V                     |

NOTE: 1. According to JEDEC/JESD 22-A114/22-C101.

## DC Electrical Characteristics

**Table 5A. Power Supply DC Characteristics,  $V_{DD} = V_{DDO} = 3.3V \pm 5\%$ ,  $T_A = -40^\circ C$  to  $85^\circ C$**

| Symbol    | Parameter                           | Test Conditions  | Minimum | Typical | Maximum | Units |
|-----------|-------------------------------------|--|---------|---------|---------|-------|
| $V_{DD}$  | Positive Supply Voltage             |  | 3.135   | 3.3     | 3.465   | V     |
| $V_{DDO}$ | Output Supply Voltage               |  | 3.135   | 3.3     | 3.465   | V     |
| $I_{DD}$  | Core Power Output<br>Supply Current | All Outputs Terminated with 100 $\Omega$<br>Between Qx and nQx |         | 37      | 43      | mA    |
| $I_{DDO}$ | Output Power Supply Current         | All Outputs Terminated with 100 $\Omega$<br>Between Qx and nQx |         | 73      | 83      | mA    |

**Table 5B. LVCMOS/LVTTL DC Characteristics,  $V_{DD} = V_{DDO} = 3.3V \pm 5\%$ ,  $T_A = -40^\circ C$  to  $85^\circ C$**

| Symbol   | Parameter                | Test Conditions   | Minimum | Typical | Maximum        | Units   |
|----------|--------------------------|---|---------|---------|----------------|---------|
| $V_{IH}$ | Input High Voltage       |   | 2       |         | $V_{DD} + 0.3$ | V       |
| $V_{IL}$ | Input Low Voltage        |   | -0.3    |         | 0.8            | V       |
| $I_{IH}$ | Input<br>High<br>Current | CLK, REFSEL,<br>N0, SEL0, SEL1<br>$V_{DD} = V_{IN} = 3.465V$        |         |         | 150            | $\mu A$ |
|          |                          | N1, nOE0, nOE1<br>$V_{DD} = V_{IN} = 3.465V$                        |         |         | 5              | $\mu A$ |
| $I_{IL}$ | Input<br>Low<br>Current  | CLK, REFSEL,<br>N0, SEL0, SEL1<br>$V_{DD} = 3.465V$ , $V_{IN} = 0V$ | -5      |         |                | $\mu A$ |
|          |                          | N1, nOE0, nOE1<br>$V_{DD} = 3.465V$ , $V_{IN} = 0V$                 | -150    |         |                | $\mu A$ |

**Table 5C. Differential Input DC Characteristics,  $V_{DD} = V_{DDO} = 3.3V \pm 5\%$ ,  $T_A = -40^{\circ}C$  to  $85^{\circ}C$** 

| Symbol         | Parameter                                  |         | Test Conditions     | Minimum | Typical | Maximum             | Units    |
|----------------|--|---------|---------------------|---------|---------|---------------------|----------|
| $R_{IN}$       | Differential Input Resistance              | IN, nIN | IN to VT, nIN to VT |         | 50      |                     | $\Omega$ |
| $V_{CMR}$      | Common mode input voltage. <sup>1, 2</sup> |         |                     | 1       |         | $V_{DD} - V_{PP}/2$ | V        |
| $V_{PP}$       | Input Voltage Swing <sup>2</sup>           |         |                     | 0.15    |         | 1.2                 | V        |
| $V_{DIFF\_IN}$ | Differential Input Voltage Swing           | IN, nIN |                     | 0.30    |         |                     | V        |
| $I_{IN}$       | Input Current                              | IN, nIN |                     |         |         | 30                  | mA       |

NOTE: 1.  $V_{CMR}$  is defined as the signal crosspoint.

NOTE: 2.  $V_{IL}$  should not be less than -0.3V.  $V_{IH}$  should not be greater than  $V_{DD}$ .

**Table 5D. LVDS DC Characteristics,  $V_{DD} = V_{DDO} = 3.3V \pm 5\%$ ,  $T_A = -40^{\circ}C$  to  $85^{\circ}C$** 

| Symbol          | Parameter                   | Test Conditions | Minimum | Typical | Maximum | Units |
|-----------------|-----------------------------|-----------------|---------|---------|---------|-------|
| $V_{OD}$        | Differential Output Voltage |                 | 247     |         | 460     | mV    |
| $\Delta V_{OD}$ | $V_{OD}$ Magnitude Change   |                 |         |         | 50      | mV    |
| $V_{OS}$        | Offset Voltage              |                 | 1       |         | 1.4     | V     |
| $\Delta V_{OS}$ | $V_{OS}$ Magnitude Change   |                 |         |         | 50      | mV    |

## AC Electrical Characteristics

**Table 6. AC Characteristics,  $V_{DD} = V_{DDO} = 3.3V \pm 5\%$ ,  $T_A = -40^{\circ}C$  to  $85^{\circ}C$  <sup>1</sup>**

| Symbol                          | Parameter                          |                          | Test Conditions   |                        | Minimum | Typical | Maximum             | Units |
|---------------------------------|------------------------------------|--------------------------|---|------------------------|---------|---------|---------------------|-------|
| f <sub>IN</sub>                 | Input Frequency                    | IN, nIN                  |   |                        | 0       |         | 2000                | MHz   |
|                                 |                                    | CLK                      |   |                        | 0       |         | 250                 | MHz   |
| f <sub>OUT</sub>                | Output Frequency                   |                          | SELn = 0  |                        | 0       |         | 2000                | MHz   |
|                                 |                                    |                          | SEL1 = 1, SEL0 = 1  |                        | 0       |         | f <sub>IN</sub> ÷ N | MHz   |
| t <sub>PD</sub>                 | Propagation Delay <sup>2, 3</sup>  |                          | SELn = 0 (pass-through)   |                        | 300     |         | 550                 | ps    |
|                                 |                                    |                          | SEL1 = 1 and<br>SEL0 = 1  | N Divider = ÷2, ÷4, ÷8 | 450     |         | 760                 | ps    |
|                                 |                                    |                          |   | N Divider = ÷5         | 550     |         | 900                 | ps    |
| t <sub>sk(o)</sub>              | Output Skew <sup>4, 5</sup>        |                          |   |                        |         |         | 22                  | ps    |
| t <sub>R</sub> / t <sub>F</sub> | Output Rise/Fall Time              | Q0, Q1                   | 20% to 80%  |                        |         | 145     | 260                 | ps    |
|                                 | Output Isolation                   | Q0 to Q1 and<br>Q1 to Q0 | f <sub>OUT</sub> = 125MHz and 25MHz   |                        |         | 78      |                     | dBc   |
|                                 | Input Mux Isolation                |                          | f <sub>OUT</sub> = 125MHz   |                        |         | 64      |                     | dBc   |
| f <sub>jit</sub> (Ø)            | RMS Additive Phase Jitter (Random) | Q0, Q1                   | f <sub>OUT</sub> = 125MHz,<br>Integration Range: 12kHz - 20MHz,<br>SELn = 0 |                        |         | 114     | 180                 | fs    |
| odc                             | Output Duty Cycle                  | Q0, Q1                   | 50% Input Duty Cycle  |                        | 45      |         | 55                  | %     |

NOTE: 1. Electrical parameters are guaranteed over the specified ambient operating temperature range, which is established when the device is mounted in a test socket with maintained transverse airflow greater than 500 lfm. The device will meet specifications after thermal equilibrium has been reached under these conditions.

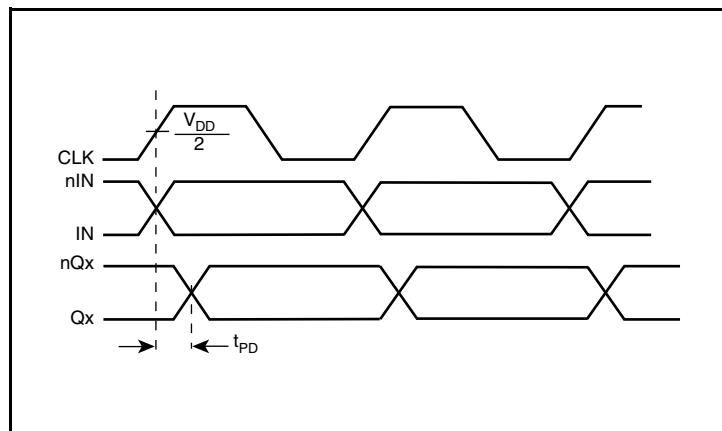
NOTE: 2. Measured from  $V_{DD}/2$  of the input to the differential output crosspoint.

NOTE: 3. Measured from the differential input crossing point to the differential output crosspoint.

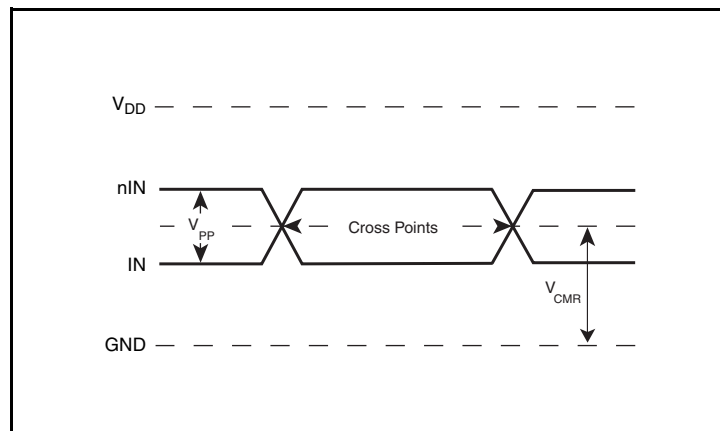
NOTE: 4. This parameter is defined in accordance with JEDEC standard 65.

NOTE: 5. Defined as skew between outputs at the same supply voltage and with equal load conditions. Measured at the differential crosspoints.

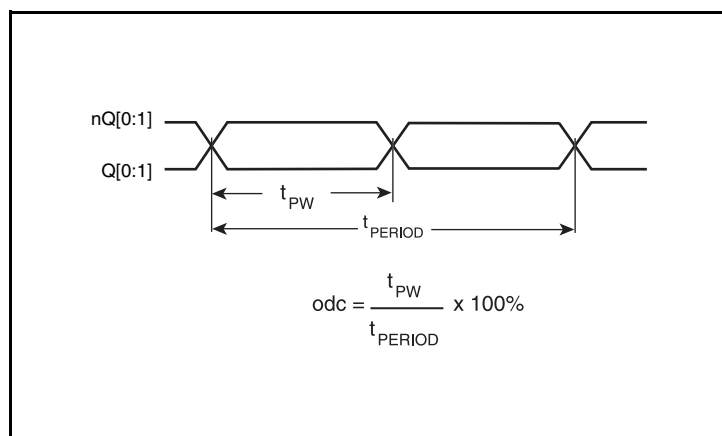
## Parameter Measurement Information



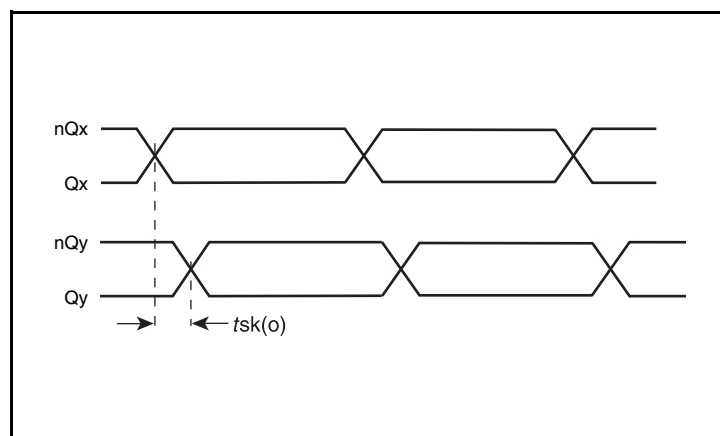
Propagation Delay



Differential Input Level

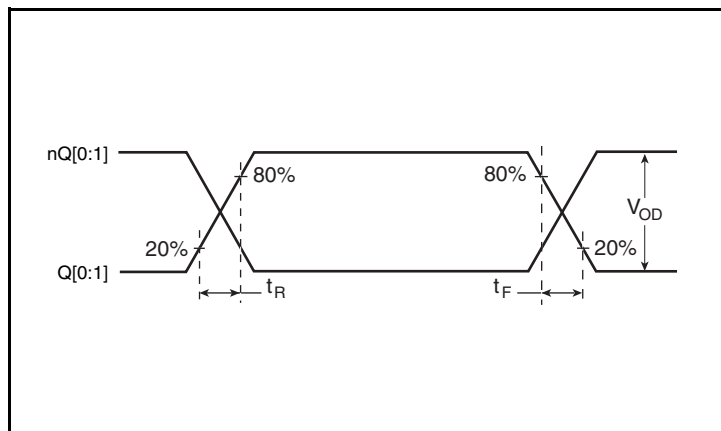


Output Duty Cycle/Pulse Width/Period

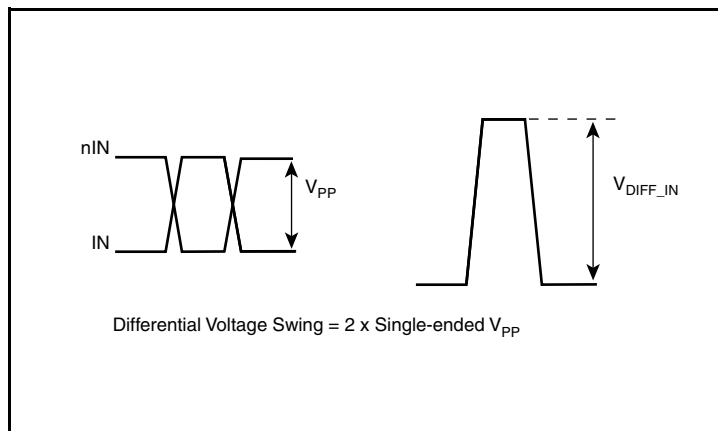


Output Skew

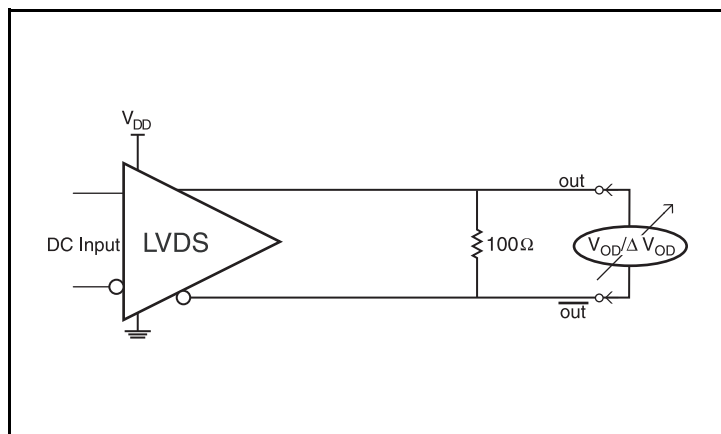
## Parameter Measurement Information



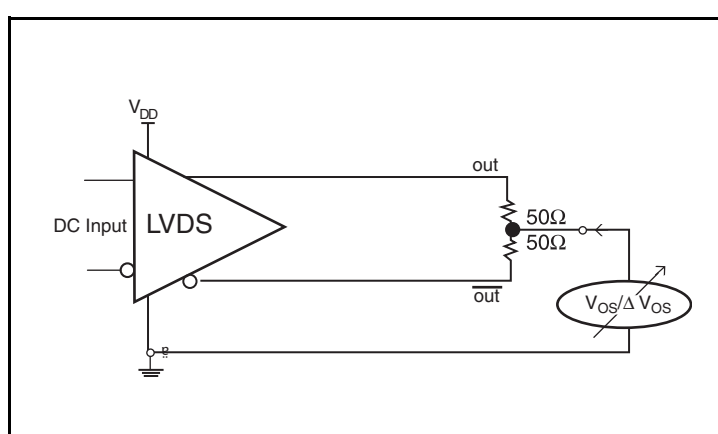
Output Rise/Fall Time



Differential Input Voltage Swing



Differential Output Voltage Setup



Offset Voltage



## Applications Information

### Differential Input with Built-In 50Ω Termination Interface

The IN/nIN with built-in 50Ω terminations accept LVDS, LVPECL and other differential signals. Both differential signals must meet the  $V_{PP}$  and  $V_{CMR}$  input requirements. [Figure 2A](#) to [Figure 2B](#) to show interface examples for the IN/nIN input with built-in 50Ω terminations driven by the most common driver types. The input interfaces

suggested here are examples only. If the driver is from another vendor, use their termination recommendation. Please consult with the vendor of the driver component to confirm the driver termination requirements.

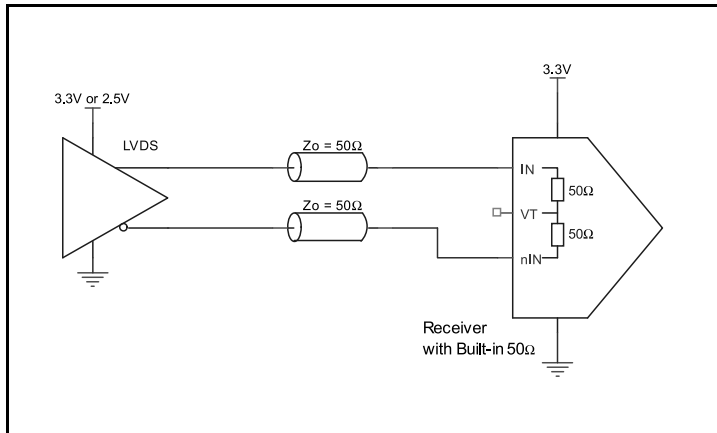


Figure 2A. IN/nIN Input with Built-In 50Ω driven by an LVDS Driver

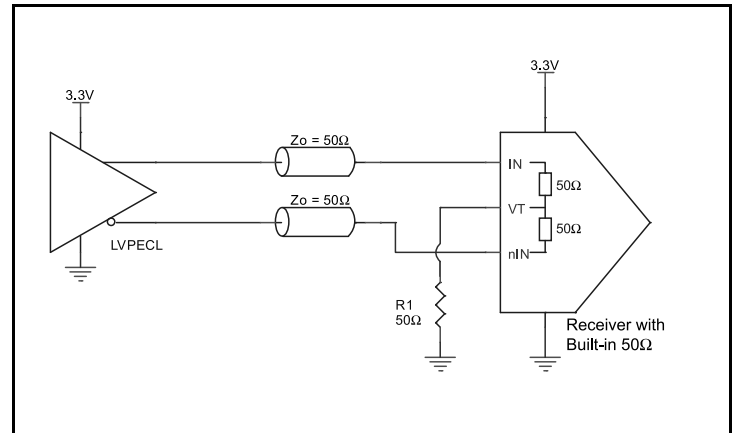


Figure 2B. IN/nIN Input with Built-In 50Ω driven by an LVPECL Driver

### Recommendations for Unused Input and Output Pins

#### Inputs:

##### CLK Input

For applications not requiring the use of a clock input, it can be left floating. Though not required, but for additional protection, a 1kΩ resistor can be tied from the CLK input to ground.

##### IN/nIN Inputs

For applications not requiring the use of a differential input, a 1KΩ resistor should tie IN to ground and a 1KΩ resistor should tie nIN to  $V_{CC}$ .

##### LVCMOS Control Pins

All control pins have internal pullup or pulldown resistors; additional resistance is not required but can be added for additional protection. A 1kΩ resistor can be used.

#### Outputs:

##### LVDS Outputs

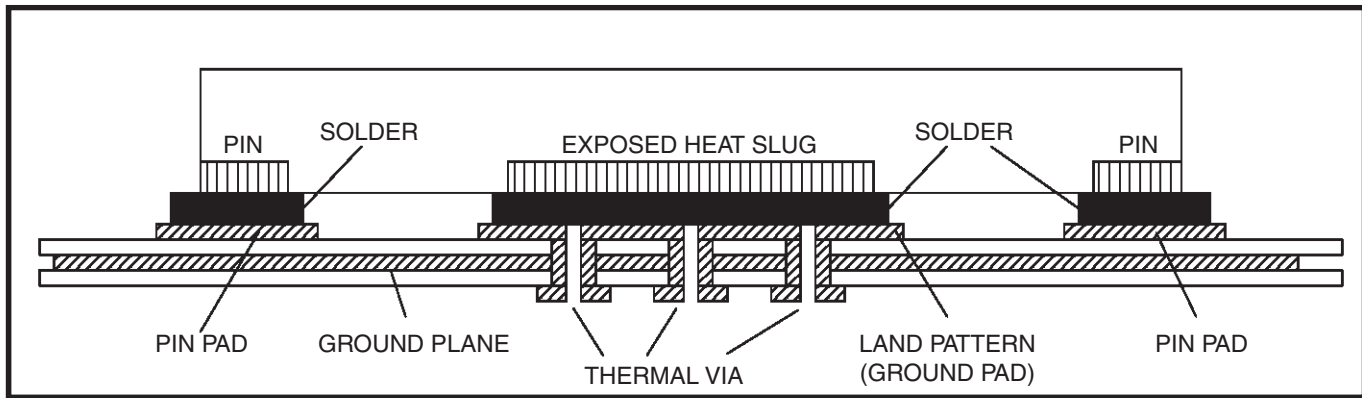
All unused LVDS output pairs can be either left floating or terminated with 100Ω across. If they are left floating, there should be no trace attached.

## VFQFN EPAD Thermal Release Path

In order to maximize both the removal of heat from the package and the electrical performance, a land pattern must be incorporated on the Printed Circuit Board (PCB) within the footprint of the package corresponding to the exposed metal pad or exposed heat slug on the package, as shown in [Figure 3](#). The solderable area on the PCB, as defined by the solder mask, should be at least the same size/shape as the exposed pad/slug area on the package to maximize the thermal/electrical performance. Sufficient clearance should be designed on the PCB between the outer edges of the land pattern and the inner edges of pad pattern for the leads to avoid any shorts.

While the land pattern on the PCB provides a means of heat transfer and electrical grounding from the package to the board through a solder joint, thermal vias are necessary to effectively conduct from the surface of the PCB to the ground plane(s). The land pattern must be connected to ground through these vias. The vias act as “heat pipes”. The number of vias (i.e. “heat pipes”) are application specific

and dependent upon the package power dissipation as well as electrical conductivity requirements. Thus, thermal and electrical analysis and/or testing are recommended to determine the minimum number needed. Maximum thermal and electrical performance is achieved when an array of vias is incorporated in the land pattern. It is recommended to use as many vias connected to ground as possible. It is also recommended that the via diameter should be 12 to 13mils (0.30 to 0.33mm) with 1oz copper via barrel plating. This is desirable to avoid any solder wicking inside the via during the soldering process which may result in voids in solder between the exposed pad/slug and the thermal land. Precautions should be taken to eliminate any solder voids between the exposed heat slug and the land pattern. Note: These recommendations are to be used as a guideline only. For further information, please refer to the Application Note on the Surface Mount Assembly of Amkor's Thermally/Electrically Enhance Lead frame Base Package, Amkor Technology.



**Figure 3. P.C. Assembly for Exposed Pad Thermal Release Path – Side View (drawing not to scale)**

## LVDS Driver Termination

For a general LVDS interface, the recommended value for the termination impedance ( $Z_T$ ) is between  $90\Omega$  and  $132\Omega$ . The actual value should be selected to match the differential impedance ( $Z_0$ ) of your transmission line. A typical point-to-point LVDS design uses a  $100\Omega$  parallel resistor at the receiver and a  $100\Omega$  differential transmission-line environment. In order to avoid any transmission-line reflection issues, the components should be surface mounted and must be placed as close to the receiver as possible. IDT offers a full line of LVDS compliant devices with two types of output structures: current source and voltage source type. The standard termination schematic as shown in [Figure 4A](#) can be used with either

type of output structure. [Figure 4B](#), which can also be used with both output types, is an optional termination with center tap capacitance to help filter common mode noise. The capacitor value should be approximately  $50\text{pF}$ . If using a non-standard termination, it is recommended to contact IDT and confirm if the output structure is current source or voltage source type. In addition, since these outputs are LVDS compatible, the input receiver's amplitude and common-mode input range should be verified for compatibility with the output.

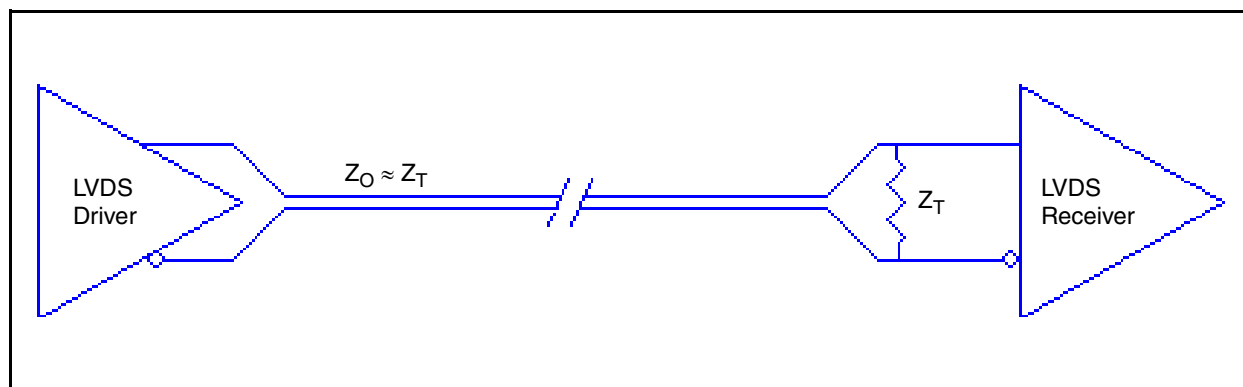


Figure 4A. Standard LVDS Termination

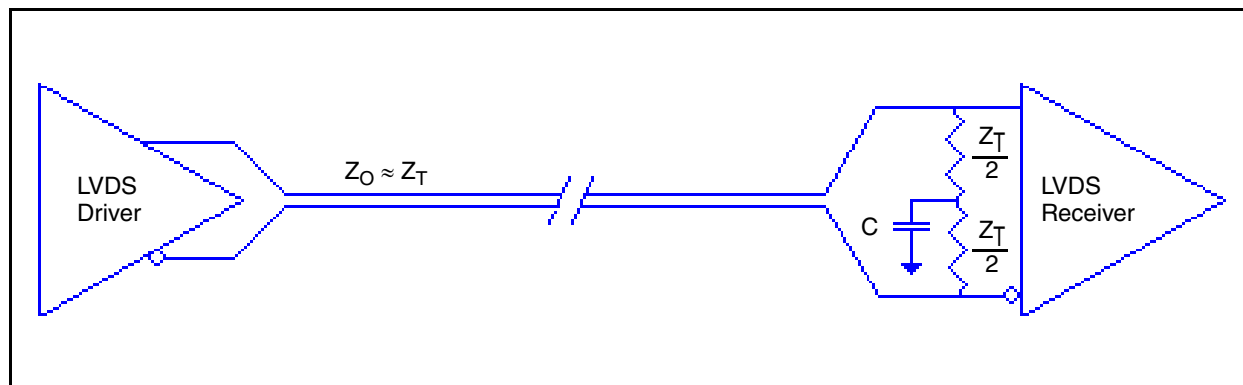


Figure 4B. Optional LVDS Termination

## Power Considerations

This section provides information on power dissipation and junction temperature for the 8V74S4622. Equations and example calculations are also provided.

The following calculation is for maximum current at 85°C.

### 1. Power Dissipation.

The total power dissipation for the 8V74S4622 is the sum of the core power plus the power dissipated due to the load.

The following is the power dissipation for  $V_{DD} = 3.3V + 5\% = 3.465V$ , which gives worst case results.

- Power (core)<sub>MAX</sub> =  $V_{DD\_MAX} * I_{DD\_MAX} = 3.465V * 40.3mA = 139.6mW$
- Power (outputs)<sub>MAX</sub> =  $V_{DDO\_MAX} * I_{DDO\_MAX} = 3.465V * 78mA = 270.3mW$

$$\text{Total Power}_{MAX} = 139.6mW + 270.3mW = 409.9mW$$

### 2. Junction Temperature.

Junction temperature,  $T_j$ , is the temperature at the junction of the bond wire and bond pad directly affects the reliability of the device. The maximum recommended junction temperature is 125°C. Limiting the internal transistor junction temperature,  $T_j$ , to 125°C ensures that the bond wire and bond pad temperature remains below 125°C.

The equation for  $T_j$  is as follows:  $T_j = \theta_{JA} * Pd_{total} + T_A$

$T_j$  = Junction Temperature

$\theta_{JA}$  = Junction-to-Ambient Thermal Resistance

$Pd_{total}$  = Total Device Power Dissipation (example calculation is in section 1 above)

$T_A$  = Ambient Temperature

In order to calculate junction temperature, the appropriate junction-to-ambient thermal resistance  $\theta_{JA}$  must be used. Assuming no air flow and a multi-layer board, the appropriate value is 62.2°C/W per [Table 7](#) below.

Therefore,  $T_j$  for an ambient temperature of 85°C with all outputs switching is:

$$85^\circ C + 0.41W * 62.2^\circ C/W = 110.5^\circ C. \text{ This is below the limit of } 125^\circ C.$$

This calculation is only an example.  $T_j$  will obviously vary depending on the number of loaded outputs, supply voltage, air flow and the type of board (multi-layer).

**Table 7. Thermal Resistance  $\theta_{JA}$  for 20-Lead VFQFN, Forced Convection**

| $\theta_{JA}$ vs. Air Flow                  |          |          |          |
|---|----------|----------|----------|
| Meters per Second                           | 0        | 1        | 2.5      |
| Multi-Layer PCB, JEDEC Standard Test Boards | 62.2°C/W | 54.4°C/W | 48.8°C/W |

## Reliability Information

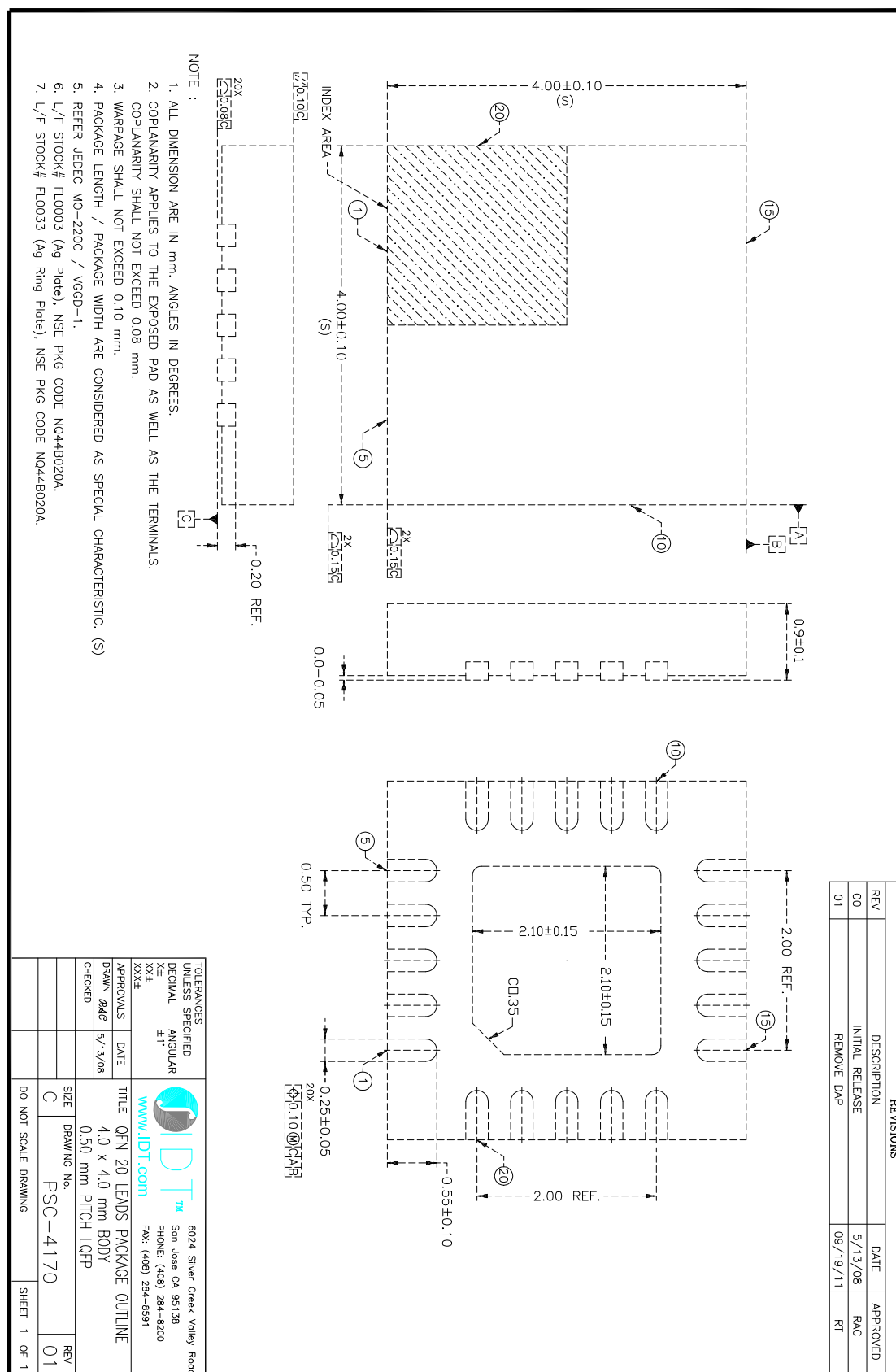
**Table 8.  $\theta_{JA}$  vs. Air Flow Table for a 20-lead VFQFN**

| $\theta_{JA}$ vs. Air Flow                  |          |          |          |
|---|----------|----------|----------|
| Meters per Second                           | 0        | 1        | 2.5      |
| Multi-Layer PCB, JEDEC Standard Test Boards | 62.2°C/W | 54.4°C/W | 48.8°C/W |

## Transistor Count

The transistor count for 8V74S4622 is: 1723

# 20-Lead VFQFN Package Outline and Package Dimensions



# Ordering Information

Table 9. Ordering Information

| Part/Order Number | Marking       | Package                  | Shipping Packaging                          | Temperature   |
|-------------------|---------------|--------------------------|---|---------------|
| 8V74S4622NLGI     | 8V74S4622NLGI | 20-lead VFQFN, Lead-Free | Tray  | -40°C to 85°C |
| 8V74S4622NLGI8    | 8V74S4622NLGI | 20-lead VFQFN, Lead-Free | Tape & Reel                                 | -40°C to 85°C |
| 8V74S4622NLGI/W   | 8V74S4622NLGI | 20-lead VFQFN, Lead-Free | Tape & Reel,<br>Pin 1 Orientation EIA-481-D | -40°C to 85°C |

Table 10. Pin 1 Orientation in Tape and Reel Packaging

| Part Number Suffix | Pin 1 Orientation      | Illustration |
|--------------------|------------------------|--------------|
| 8                  | Quadrant 1 (EIA-481-C) |              |
| /W                 | Quadrant 2 (EIA-481-D) |              |





## IMPORTANT NOTICE AND DISCLAIMER

RENESAS ELECTRONICS CORPORATION AND ITS SUBSIDIARIES ("RENESAS") PROVIDES TECHNICAL SPECIFICATIONS AND RELIABILITY DATA (INCLUDING DATASHEETS), DESIGN RESOURCES (INCLUDING REFERENCE DESIGNS), APPLICATION OR OTHER DESIGN ADVICE, WEB TOOLS, SAFETY INFORMATION, AND OTHER RESOURCES "AS IS" AND WITH ALL FAULTS, AND DISCLAIMS ALL WARRANTIES, EXPRESS OR IMPLIED, INCLUDING, WITHOUT LIMITATION, ANY IMPLIED WARRANTIES OF MERCHANTABILITY, FITNESS FOR A PARTICULAR PURPOSE, OR NON-INFRINGEMENT OF THIRD PARTY INTELLECTUAL PROPERTY RIGHTS.

These resources are intended for developers skilled in the art designing with Renesas products. You are solely responsible for (1) selecting the appropriate products for your application, (2) designing, validating, and testing your application, and (3) ensuring your application meets applicable standards, and any other safety, security, or other requirements. These resources are subject to change without notice. Renesas grants you permission to use these resources only for development of an application that uses Renesas products. Other reproduction or use of these resources is strictly prohibited. No license is granted to any other Renesas intellectual property or to any third party intellectual property. Renesas disclaims responsibility for, and you will fully indemnify Renesas and its representatives against, any claims, damages, costs, losses, or liabilities arising out of your use of these resources. Renesas' products are provided only subject to Renesas' Terms and Conditions of Sale or other applicable terms agreed to in writing. No use of any Renesas resources expands or otherwise alters any applicable warranties or warranty disclaimers for these products.

(Disclaimer Rev.1.0 Mar 2020)

### Corporate Headquarters

TOYOSU FORESIA, 3-2-24 Toyosu,  
Koto-ku, Tokyo 135-0061, Japan  
[www.renesas.com](http://www.renesas.com)

### Contact Information

For further information on a product, technology, the most up-to-date version of a document, or your nearest sales office, please visit:  
[www.renesas.com/contact/](http://www.renesas.com/contact/)

### Trademarks

Renesas and the Renesas logo are trademarks of Renesas Electronics Corporation. All trademarks and registered trademarks are the property of their respective owners.