

DATA DISPLAY PRODUCTS (DDP) PROPRIETARY INFORMATION. DO NOT REPRODUCE, COPY, OR USE WITHOUT EXPRESS WRITTEN PERMISSION. COPYRIGHT DATA DISPLAY PRODUCTS.

ELECTRO-OPTICAL CHARACTERISTICS

@ T_a = 25°C

SYM	PARAMETER	X = LED COLOR						UNIT	
		RED	ORANGE	AMBER	GREEN	BLUE	WHITE		
I _v	TYP. LUMINOUS INTENSITY @ I _f =20mA	300	450	325	300	125	270	mcd	
V _o	OPERATING VOLTAGE	6	6	6	6	6	6	V	
I _f	TYP. FORWARD CURRENT @ V _f =6V	23~30						8~13	mA
I _m	MAX. FORWARD CURRENT @ V _f =7V	40	40	40	20	20	20	mA	
V _{br}	REVERSE BREAKDOWN @ I _r =100μA	-	-	-	-	-	-	V	
λ _{pk}	PEAK WAVELENGTH	635	609	592	520	465	-	nm	
λ _d	DOMINANT WAVELENGTH	626	605	590	525	470	-	nm	

ABSOLUTE MAX. RATING T_a=25°C

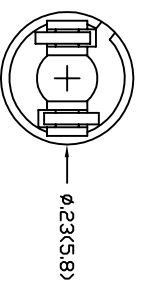
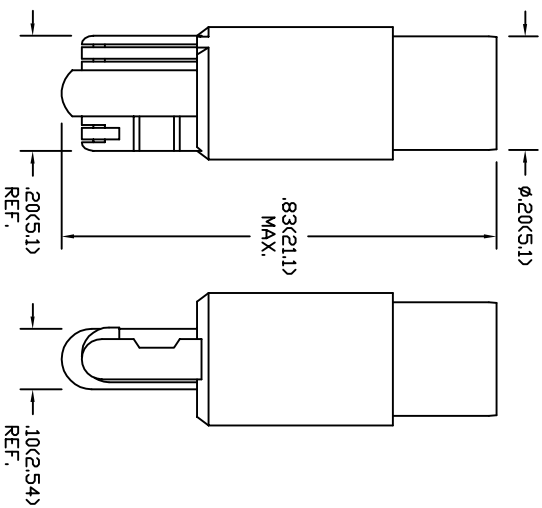
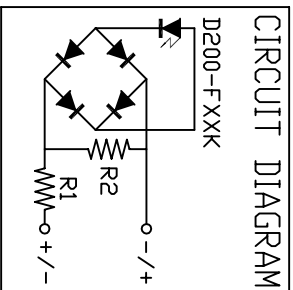
PARAMETER	VALUE			UNIT
	R, D & A	G, B & W		
POWER DISSIPATION	280	140		mW
DERATE/°C >T _a	4.2	2.1		mW
OPERATING VOLTAGE	7	7		V
OPERATING TEMPERATURE	-40~+100	-30~+85		°C
STORAGE TEMPERATURE	-40~+120	-40~+100		°C

REMARKS:

1. Dimensions are in inches(mm).
2. LED encapsulation is water-clear.
3. This device is immune to peak noise current of 3mA.
4. Caution: GaIn LEDs are class 1 ESD sensitive (MIL-STD-1686). Exceeding absolute maximum ratings may cause damage to, or possibly result in catastrophic failure of these devices. Use appropriate ESD precautions during handling and operation.
5. For 200-FW4K LED chromaticity coordinate range, see drawing #502590.

REV.	DATE	BY	DESCRIPTION
A	011212	LC	INITIAL RELEASE

503265



Data Display Products

445 S. DOUGLAS ST., EL SEGUNDO, CA. 90245 (310)640-0442 FAX: (310)640-7639

DATE: 011212 DWN BY: LC CHK'D BY: APPR'D BY:

LAST REV. DATE: -

REV LEVEL: A

MATERIAL: -

TITLE: 86LS-X1

SCALE: NONE TOL: .XX(X) .XXX(XXX) ANG. DWG NUMBER: 503265