

NOTES:

1. MATERIALS AND FINISHES:

BODY, COUPLING NUT AND
 OUTER CONTACT - BRASS, BLACK CHROMATE OVER NICKEL
 CONTACT - BRASS, GOLD PLATING
 INSULATOR AND INSULATOR DISC - PTFE, NATURAL
 RETAINING RING - PHOSPHOR BRONZE, BLACK CHROMATE OVER NICKEL
 GASKET - SILICONE RUBBER, RED
 FERRULE - COPPER, BLACK CHROMATE OVER NICKEL
 HEAT SHRINK TUBING - CROSSLINKED POLYOLEFIN, BLACK

2. ELECTRICAL:

A. IMPEDANCE: 50 OHM
 B. FREQUENCY RANGE: DC - 6 GHz
 C. DIELECTRIC WITHSTANDING VOLTAGE: 1000 VRMS, MIN.

3. MECHANICAL:

A. DURABILITY: 500 CYCLES MIN.
 B. TEMPERATURE RANGE: -65°C TO +165°C
 C. COSMETIC PARAMETERS OF PLATING PER AMPHENOL SPEC. 349-50966.

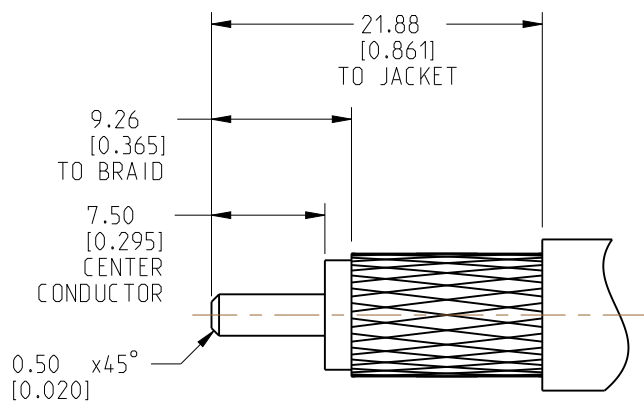
4. PACKAGING:

A. QUANTITY: SINGLE PACK
 B. MARKING: PACKAGING TO BE MARKED
 "AMPHENOL RF, 82-6642-BC AND DATE CODE"

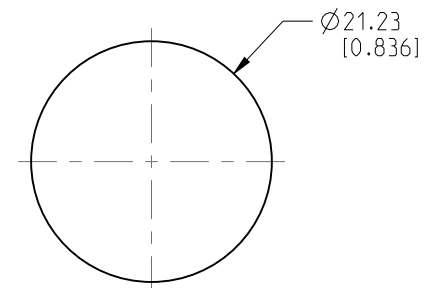
5. CABLE ASSEMBLY INSTRUCTIONS:

- A. TRIM CABLE AS SHOWN.
- B. SLIDE HEAT SHRINK TUBING, FERRULE AND INSULATOR DISC ONTO CABLE.
- C. SOLDER CABLE CENTER CONDUCTOR TO CONTACT.
- D. INSERT CABLE WITH FOIL ENTERING CONNECTOR AND BRAID OVER KNURL.
- E. CRIMP FERRULE OVER BRAID WITH 0.429" HEX DIE.
- F. APPLY HEAT SHRINK TUBING OVER FERRULE.

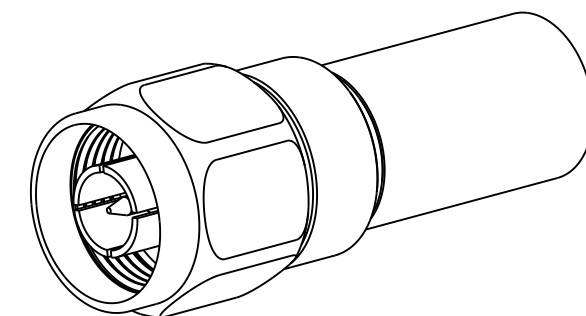
6 SHOWS CABLE ENTRY DIMENSIONS.



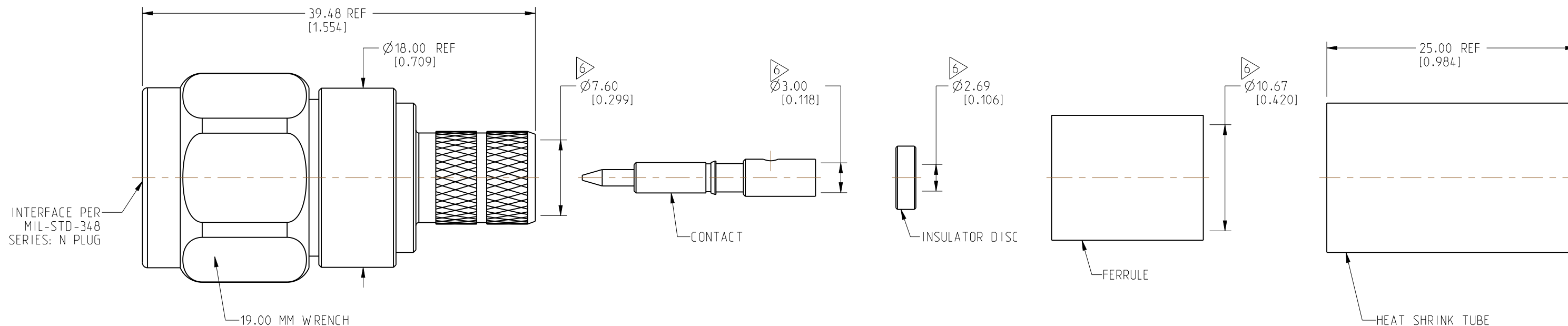
RECOMMENDED CABLE STRIPPING DIMENSIONS



MIN PASS THRU DIAMETER



SCALE 1.500



CUSTOMER OUTLINE DRAWING

ALL OTHER SHEETS ARE FOR INTERNAL USE ONLY

NOTICE: These drawings, specifications, or other data (1) are, and remain the property of Amphenol corp. (2) must be returned upon request; and (3) are confidential and not to be disclosed to any person other than those to whom they are given by Amphenol Corp. The furnishing of these drawings, specifications, or other data by Amphenol Corp., or to any other person to anyone for any purpose is not to be regarded by implication or otherwise in any manner licensing, granting rights to permitting such holder or any other person to manufacture, use or sell any product, process or design, patented or otherwise, that may in any way be related to or disclosed by said drawings, specifications, or other data.

UNLESS OTHERWISE SPECIFIED
 DIMENSIONS ARE METRIC (INCHES) AND TOLERANCES ARE:
 <0.5mm = ±0.05mm [$\pm 0.020 = \pm 0.002$]
 0.5 - 6mm = ±0.1mm [$\pm 0.020 - 0.236 = \pm 0.004$]
 >6.00 - 30mm = ±0.2mm [$\pm 0.236 - 1.181 = \pm 0.008$]
 >30.00 - 120mm = ±0.3mm [$\pm 1.181 - 4.725 = \pm 0.012$]
 ANGLES = ±1°

MATERIAL
 SEE NOTES
 ENGR.1 SIVA ENGR.2 M.ZHANG DATE 30-SEP-22

TITLE
 N STR PLUG FOR LMR 400 CABLE BLACK PLATED
 SHEET NO. 2 OF 2 SCALE: 2.5:1.0

Amphenol RF
 DRAWING NO. 82-6642-BC
 ITEM NO. 82-6642-BC
 PART NO. 82-6642-BC
 REV A

THIRD ANGLE PROJ.

REFERENCE 82-6642 EAR# 11379