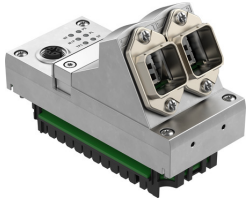


Interface CPX-M-FB44

Part number: 8110370

FESTO



Data sheet

| Feature | Value |
|----------------------------------|---|
| Protocol | PROFINET IRT PROFINET RT |
| Dimensions W x L x H | (incl. interlinking block) 50 mm x 107 mm x 80 mm |
| Product weight | 280 g |
| Ambient temperature | -5 °C ... 50 °C |
| Storage temperature | -20 °C ... 70 °C |
| Degree of protection | IP65 IP67 |
| Corrosion resistance class (CRC) | 0 - No corrosion stress |
| LABS (PWIS) conformity | VDMA24364-B2-L |
| Certification | RCM compliance mark |
| Note on materials | RoHS-compliant |
| Housing material | Die-cast aluminum |
| LED display (product-specific) | M: Modify, parameterization PL: load supply PS: electronics supply, sensor supply SF: system fault |
| LED display (bus-specific) | M/P: maintenance/PROFenergy NF: network fault TP1: network active port 1 TP2: network active, port 2 |
| Device-specific diagnostics | Channel-oriented and module-oriented diagnostics Undervoltage of modules Diagnostic memory |
| Control elements | DIL switch |
| Fieldbus interface | 2x RJ45 push-pull socket, AIDA |
| Max. address capacity inputs | 64 byte |
| Max. address capacity outputs | 64 byte |
| Parameterization | Diagnostic behavior Fail-safe response forcing of channels Signal setup System parameter |
| Baud rate | 100 Mbit/s |
| Configuration support | GSDML file |

| Feature | Value |
|--|--|
| Additional functions | Acyclic data access via fieldbus Acyclic data access via Ethernet Fast start-up (FSU) I&M Channel-based diagnostics via fieldbus LLDP MQTT MRP MRPD PROFinergy PROFI-safe S2 system redundancy Start-up parameterization in plain text via fieldbus System status can be indicated via process data Additional diagnostic interface for operator units |
| DC operating voltage range | 18 V ... 30 V |
| Nominal operating voltage DC | 24 V |
| Intrinsic current consumption at nominal operating voltage | Typ. 70 mA |