

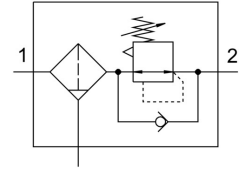
Compressed air filter regulator MS2-LFR-QS6-D6-C-P-M-A8-B

Part number: 8086646

FESTO



Data sheet



Feature	Value
Size	2
Series	MS
Actuator lock	Rotary knob with detent
Mounting position	Vertical +/- 5°
Grade of filtration	5 µm
Condensate drain	Manually rotating
Structural design	Filter regulator without pressure gauge
Max. condensate volume	3 ml
Controller function	Outlet pressure constant With secondary exhausting With return flow function
Symbol	00991590
Pressure gauge	G1/8 prepared
Operating pressure	0.1 MPa ... 0.8 MPa
Operating pressure	1 bar ... 8 bar
Pressure regulation range	0.5 bar ... 7 bar
Max. pressure hysteresis	0.025 MPa
Max. pressure hysteresis	0.25 bar
Max. pressure hysteresis	3.625 psi
Standard nominal flow rate	310 l/min
Operating medium	Compressed air as per ISO 8573-1:2010 [7:4:4] Inert gas
Corrosion resistance class (CRC)	1 - Low corrosion stress
LABS (PWIS) conformity	VDMA24364-B1/B2-L
Cleanroom class	Class 7 according to ISO 14644-1
Storage temperature	-5 °C ... 50 °C
Air quality class at the output	Compressed air as per ISO 8573-1:2010 [6:4:4]
Temperature of medium	-5 °C ... 50 °C
Ambient temperature	-5 °C ... 50 °C
Product weight	35.7 g
Type of mounting	Optionally: Front panel mounting Line installation With accessories
Pneumatic connection 1	QS-6
Pneumatic connection 2	QS-6
Note on materials	RoHS-compliant

Feature	Value
Seals material	NBR
Rotary knob material	POM
Material of spring	High-alloy steel
Compressed air filter material	PE
Housing material	PA-reinforced
Diaphragm material	NBR
Material of bowl	PC
Separating disc material	POM
Valve tappet material	Wrought aluminum alloy NBR