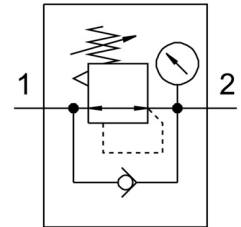


# Pressure regulator MS2-LR-QS6-D6-AR-BAR-B

Part number: 8086638

**FESTO**



## Data sheet

Feature	Value
Size	2
Series	MS
Actuator lock	Rotary knob with detent
Mounting position	Any
Structural design	Directly controlled diaphragm regulator
Controller function	Outlet pressure constant With secondary exhausting With return flow function
Symbol	00991558
Displayable unit(s)	bar psi
Pressure gauge	with pressure gauge
Operating pressure	0.1 MPa ... 0.8 MPa
Operating pressure	1 bar ... 8 bar
Pressure regulation range	0.5 bar ... 7 bar
Max. pressure hysteresis	0.025 MPa
Max. pressure hysteresis	0.25 bar
Max. pressure hysteresis	3.625 psi
Standard nominal flow rate	350 l/min
Operating medium	Compressed air as per ISO 8573-1:2010 [7:4:4] Inert gas
Corrosion resistance class (CRC)	1 - Low corrosion stress
LABS (PWIS) conformity	VDMA24364-B1/B2-L
Cleanroom class	Class 4 according to ISO 14644-1
Storage temperature	-5 °C ... 50 °C
Temperature of medium	-5 °C ... 50 °C
Ambient temperature	-5 °C ... 50 °C
Product weight	36.1 g
Type of mounting	Optionally: Front panel mounting Line installation With accessories
Pneumatic connection 1	QS-6
Pneumatic connection 2	QS-6
Note on materials	RoHS-compliant
Lower cover material	PA

Feature	Value
Seals material	NBR
Rotary knob material	POM
Material of spring	High-alloy steel
Housing material	PA-reinforced
Diaphragm material	NBR
Valve tappet material	Wrought aluminum alloy NBR