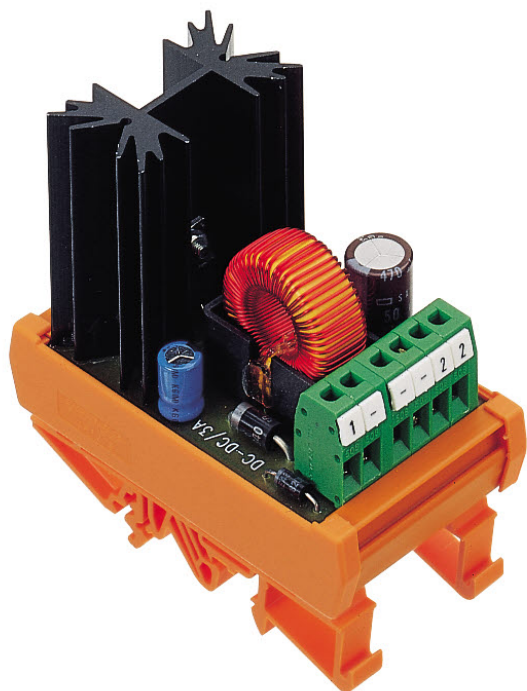


# Data sheet

## 7795.2 DC-DC/12-3



DC/DC converter module, regulated, Screw connection, Mounting type: Mounting rail TS 35, Input: 1-phase, Output: 12 VDC/3 A

### Business data

|  |                  |
|--|------------------|
| Article number                             | 7795.2           |
| Article name                               | DC-DC/12-3       |
| GTIN (EAN)                                 | 4044211078133    |
| Packaging unit                             | 1                |
| Quantity unit                              | PC               |
| Weight per piece (not including packaging) | 162 g            |
| Weight per piece (including packaging)     | 192 g            |
| Unit of weight                             | G                |
| Customs number                             | 85423990         |
| Country of origin                          | NL               |
| Product description                        | Converter module |

# Data sheet

## 7795.2 DC-DC/12-3

### Technical data

#### Dimensions

|                  |       |
|------------------|-------|
| Length           | 50 mm |
| Width            | 87 mm |
| Height TS 35/7.5 | 88 mm |

#### Ratings

|                      |     |
|----------------------|-----|
| Overvoltage category | III |
| Contamination degree | 2   |

#### Connection data

|  |                     |
|--|---------------------|
| Connection principle                                     | Screw connection    |
| Wire cross-section single core (rigid), min.             | 0.2 mm <sup>2</sup> |
| Wire cross-section single-core (rigid), max.             | 4 mm <sup>2</sup>   |
| Wire cross-section stranded, min.                        | 0.2 mm <sup>2</sup> |
| Wire cross-section stranded, max.                        | 2.5 mm <sup>2</sup> |
| Wire cross-section stranded with wire-end ferrules, min. | 0.2 mm <sup>2</sup> |
| Wire cross-section stranded with wire-end ferrules, max. | 2.5 mm <sup>2</sup> |
| Stripping length   | 7 mm                |
| Torque   | 0.6 Nm              |

#### Input data

|                       |        |
|-----------------------|--------|
| Input voltage DC min. | 14,5 V |
| Input voltage DC max. | 40 V   |
| Zero-load current     | 20 mA  |
| Power consumption     | 36 W   |

#### Output data

|                       |         |
|-----------------------|---------|
| Output voltage DC     | 12 V    |
| Regulated DC voltage  | ✓       |
| Output current        | 3 A     |
| Short-circuit current | 5,3 A   |
| Residual ripple       | <250 mV |

#### Materials

|                           |        |
|---------------------------|--------|
| Working temperature, min. | -20 °C |
| Working temperature, max. | 50 °C  |

# Data sheet

## 7795.2 DC-DC/12-3



### Technical data

#### Further technical data

|                         |           |
|-------------------------|-----------|
| Protection class        | IP00      |
| Status display          | ✓         |
| Efficiency              | 80 %      |
| Switching frequency     | 50000 kHz |
| Short-circuit resistant | ✓         |

#### Environmental Product Compliance

|                                |            |
|--------------------------------|------------|
| REACH Conform                  | yes        |
| REACH Reference date           | 2023-06-14 |
| REACH Candidate Substance Note | No         |
| RoHS Conform                   | yes        |

# Data sheet

## 7795.2 DC-DC/12-3



---

### Approvals

---

#### Standards and regulations

---

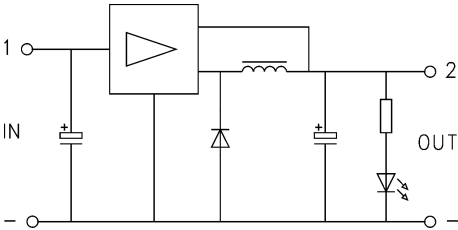
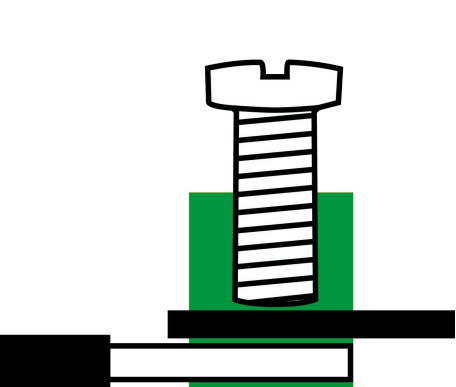
|                            |                             |
|----------------------------|-----------------------------|
| CE compliant               | yes                         |
| Standards / specifications | DIN EN 50178 / DIN VDE 0110 |

---

# Data sheet

## 7795.2 DC-DC/12-3

### Media



---

**Accessories**

---