

**Product: [GDM2106-V1U-10D](#)**

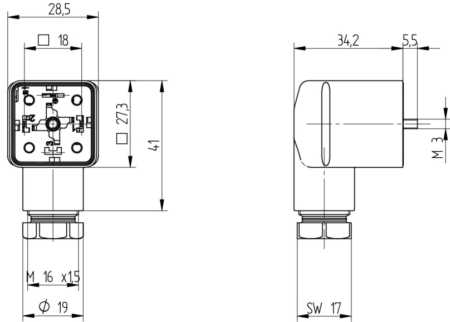


**GDM Standard DIN Standard Field Attachable Connector: Form A, 3-pin (2+1PE; PE across cable outlet), black housing, screw type, M16; with varistor, 230 V AC/DC, 10 A**

**Product Description**

GDM Standard DIN Standard Field Attachable Connector: Form A, 3-pin (2+1PE; PE across cable outlet), black housing, screw type, M16; with varistor, 230 V AC/DC, 10 A

**Technical Drawing**



**Montageanleitung Ventillöseventilrührer**

**GDM**

**DIN EN 175305-803**

IP65, IP 67

Kabelquerschnitt: 0,5 bis 2,5 mm<sup>2</sup> (SG) bis 32,0 mm<sup>2</sup> (LH) (Leitungsquerschnitt AWG 20 – AWG 14)

**Achtung!** Steckverbinder nicht unter Last oder Spannung stecken / remove!

Wir haben den Inhalt des Steckverbinder auf Übereinstimmung mit den Anschlüssen überprüft und sichergestellt, dass die Anschlüsse korrekt sind. Die Verantwortung für die richtige Montage liegt bei dem Anwender. Die Verantwortung für die richtige Montage liegt bei dem Anwender. Die Verantwortung für die richtige Montage liegt bei dem Anwender.

**Warnung:** Es werden darauf hingewiesen, dass der Inhalt dieser Bedienungsanleitung nicht als Ersatz für die Bedienungsanleitung des Herstellers zu verwenden ist. Die Verantwortung für die richtige Montage liegt bei dem Anwender.

**Warnung:** Es werden darauf hingewiesen, dass der Inhalt dieser Bedienungsanleitung nicht als Ersatz für die Bedienungsanleitung des Herstellers zu verwenden ist. Die Verantwortung für die richtige Montage liegt bei dem Anwender.

**Sicherheitsrechtliche Hinweise**

Dieses Produkt enthält Elemente, die für die Verwendung als Schutzvorrichtung für die Verwendung von Hochspannung geeignet sind. Die Verantwortung für die richtige Montage liegt bei dem Anwender.

**1. Leittypenbezeichnung, Kabelquerschnitt / Anzeigensystem**

GDM206	0,5 – 2,5 mm <sup>2</sup>	10 A/250 V
GDM208	0,5 – 2,5 mm <sup>2</sup>	10 A/250 V
GDM210	0,5 – 2,5 mm <sup>2</sup>	10 A/250 V
GDM212	0,5 – 2,5 mm <sup>2</sup>	10 A/250 V
GDM214	0,5 – 2,5 mm <sup>2</sup>	10 A/250 V
GDM216	0,5 – 2,5 mm <sup>2</sup>	10 A/250 V
GDM218	0,5 – 2,5 mm <sup>2</sup>	10 A/250 V
GDM220	0,5 – 2,5 mm <sup>2</sup>	10 A/250 V

**2. Schutzkategorie, Überspannungskategorie / Elektr. Werte**

AWG 20	40 Nm	64 / 300 V a.c./d.c.
AWG 22	40 Nm	100 / 300 V a.c./d.c.
AWG 24	40 Nm	150 / 300 V a.c./d.c.
AWG 26	40 Nm	200 / 300 V a.c./d.c.
AWG 28	40 Nm	250 / 300 V a.c./d.c.
AWG 30	40 Nm	300 / 300 V a.c./d.c.

**3. Betriebskategorie-Angebot**

M 3000	4,5	10 Nm
M 3000	5,0	10 Nm
M 3000	5,5	10 Nm
M 3000	6,0	10 Nm
M 3000	6,5	10 Nm
M 3000	7,0	10 Nm
M 3000	7,5	10 Nm
M 3000	8,0	10 Nm
M 3000	8,5	10 Nm
M 3000	9,0	10 Nm
M 3000	9,5	10 Nm
M 3000	10,0	10 Nm

**4. Leistung, Adress, Abblende**

Option 1: 10 A / 230 V AC/DC

Option 2: 10 A / 230 V AC/DC

Option 3: 10 A / 230 V AC/DC

Option 4: 10 A / 230 V AC/DC

Option 5: 10 A / 230 V AC/DC

Option 6: 10 A / 230 V AC/DC

Option 7: 10 A / 230 V AC/DC

Option 8: 10 A / 230 V AC/DC

Option 9: 10 A / 230 V AC/DC

Option 10: 10 A / 230 V AC/DC

Option 11: 10 A / 230 V AC/DC

Option 12: 10 A / 230 V AC/DC

Option 13: 10 A / 230 V AC/DC

Option 14: 10 A / 230 V AC/DC

Option 15: 10 A / 230 V AC/DC

Option 16: 10 A / 230 V AC/DC

Option 17: 10 A / 230 V AC/DC

Option 18: 10 A / 230 V AC/DC

Option 19: 10 A / 230 V AC/DC

Option 20: 10 A / 230 V AC/DC

Option 21: 10 A / 230 V AC/DC

Option 22: 10 A / 230 V AC/DC

Option 23: 10 A / 230 V AC/DC

Option 24: 10 A / 230 V AC/DC

Option 25: 10 A / 230 V AC/DC

Option 26: 10 A / 230 V AC/DC

Option 27: 10 A / 230 V AC/DC

Option 28: 10 A / 230 V AC/DC

Option 29: 10 A / 230 V AC/DC

Option 30: 10 A / 230 V AC/DC

Option 31: 10 A / 230 V AC/DC

Option 32: 10 A / 230 V AC/DC

Option 33: 10 A / 230 V AC/DC

Option 34: 10 A / 230 V AC/DC

Option 35: 10 A / 230 V AC/DC

Option 36: 10 A / 230 V AC/DC

Option 37: 10 A / 230 V AC/DC

Option 38: 10 A / 230 V AC/DC

Option 39: 10 A / 230 V AC/DC

Option 40: 10 A / 230 V AC/DC

Option 41: 10 A / 230 V AC/DC

Option 42: 10 A / 230 V AC/DC

Option 43: 10 A / 230 V AC/DC

Option 44: 10 A / 230 V AC/DC

Option 45: 10 A / 230 V AC/DC

Option 46: 10 A / 230 V AC/DC

Option 47: 10 A / 230 V AC/DC

Option 48: 10 A / 230 V AC/DC

Option 49: 10 A / 230 V AC/DC

Option 50: 10 A / 230 V AC/DC

Option 51: 10 A / 230 V AC/DC

Option 52: 10 A / 230 V AC/DC

Option 53: 10 A / 230 V AC/DC

Option 54: 10 A / 230 V AC/DC

Option 55: 10 A / 230 V AC/DC

Option 56: 10 A / 230 V AC/DC

Option 57: 10 A / 230 V AC/DC

Option 58: 10 A / 230 V AC/DC

Option 59: 10 A / 230 V AC/DC

Option 60: 10 A / 230 V AC/DC

Option 61: 10 A / 230 V AC/DC

Option 62: 10 A / 230 V AC/DC

Option 63: 10 A / 230 V AC/DC

Option 64: 10 A / 230 V AC/DC

Option 65: 10 A / 230 V AC/DC

Option 66: 10 A / 230 V AC/DC

Option 67: 10 A / 230 V AC/DC

Option 68: 10 A / 230 V AC/DC

Option 69: 10 A / 230 V AC/DC

Option 70: 10 A / 230 V AC/DC

Option 71: 10 A / 230 V AC/DC

Option 72: 10 A / 230 V AC/DC

Option 73: 10 A / 230 V AC/DC

Option 74: 10 A / 230 V AC/DC

Option 75: 10 A / 230 V AC/DC

Option 76: 10 A / 230 V AC/DC

Option 77: 10 A / 230 V AC/DC

Option 78: 10 A / 230 V AC/DC

Option 79: 10 A / 230 V AC/DC

Option 80: 10 A / 230 V AC/DC

Option 81: 10 A / 230 V AC/DC

Option 82: 10 A / 230 V AC/DC

Option 83: 10 A / 230 V AC/DC

Option 84: 10 A / 230 V AC/DC

Option 85: 10 A / 230 V AC/DC

Option 86: 10 A / 230 V AC/DC

Option 87: 10 A / 230 V AC/DC

Option 88: 10 A / 230 V AC/DC

Option 89: 10 A / 230 V AC/DC

Option 90: 10 A / 230 V AC/DC

Option 91: 10 A / 230 V AC/DC

Option 92: 10 A / 230 V AC/DC

Option 93: 10 A / 230 V AC/DC

Option 94: 10 A / 230 V AC/DC

Option 95: 10 A / 230 V AC/DC

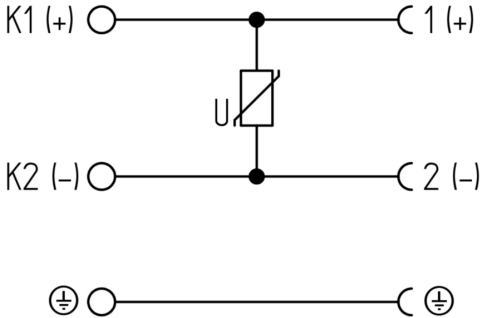
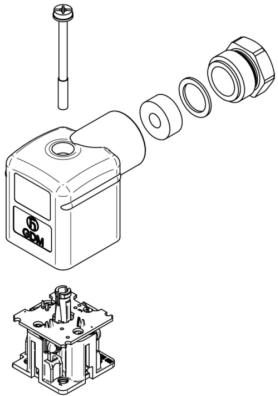
Option 96: 10 A / 230 V AC/DC

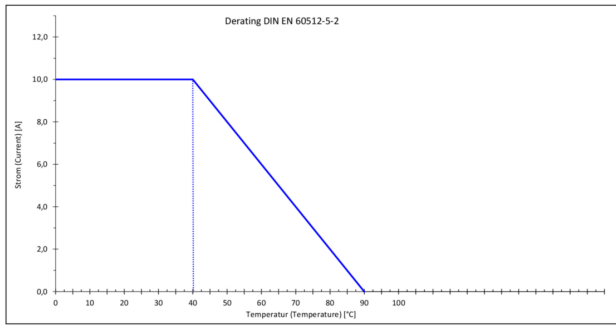
Option 97: 10 A / 230 V AC/DC

Option 98: 10 A / 230 V AC/DC

Option 99: 10 A / 230 V AC/DC

Option 100: 10 A / 230 V AC/DC





## Technical Specifications

### Technical Data

Product Family:	Valve Connectors
Product Sub Family:	GDM Standard
Brand:	Hirschmann
Connector Type:	Field attachable
Type of Contact / Gender:	Female
Connector Design:	Angled
Number of Pins:	2+PE (PE across cable outlet)
Coding:	A
Shielding:	Unshielded
Attachment Type:	Central Screw
Rated Impulse Voltage:	4.0 kV (PCBA 2.0 kV)
Operating Voltage:	230 V AC/DC
Rated Current*:	10 A
Contact Resistance:	≤ 10 mOhm
Insulation Resistance:	> 10 <sup>9</sup> Ohm
Mating Cycles:	≤ 50
Type of Connection:	Screw
Cable Gland:	M16
Conductor Cross Section:	0.25 - 1.5 mm <sup>2</sup>
Suitable Cables:	Ø 4.5 - 10 mm
Ambient Temperature (Operation)*:	-40 °C - +125 °C
Protection Degree / IP Rating**:	IP65
Design Standard:	DIN EN 175301-803-A, ISO 4400
Pollution Degree:	3 acc. to DIN EN 60664-1 (VDE 0110-1)
Clearance / Creepage Distance:	DIN EN 60664-1 (2008/01); VDE 0110-1
Overvoltage Category:	III acc. to DIN EN 60664-1 (VDE 0110-1)

### Materials

Contact Base Material:	CuZn
Contact Plating:	Cu/Sn
Contact Bearer Material:	PA GF
Contact Bearer Color:	black
Flammability Class (Contact Bearer):	UL 94 HB
Housing Material:	PA GF
Housing Color:	Black
Flammability Class (Housing):	UL 94 HB
Cable Gland Material:	PA GF
Cable Gland Gasket:	NBR
Cable Gland Color:	Black

Attachment Material:	Steel, Philips combi slot
Gasket Material:	Sold separately

## Protection Circuitry

Protective Circuit:	Varistor
---------------------	----------

## Additional Technical Data

Fastening Torque (Contact Screw):	M3: (25-30) Ncm
Fastening Torque (Cable Gland):	(150-200) Ncm
Fastening Torque (Attachment):	(50-60) Ncm

## Approvals

VDE:	yes
SEV:	yes

## Safety & Environmental Compliance

RoHS Compliant:	yes
-----------------	-----

## Notes

Note Derating:	Notice derating
Protection Degree / IP Rating Note:	** only if mounted and locked in combination with Hirschmann / Lumberg Automation connector.
Note:	Do not connect or disconnect under load.

## Variants

Item #	Item Description
934888033	GDM2106-V1U-10D

© 2023 Belden, Inc

All Rights Reserved.

Although Belden makes every reasonable effort to ensure their accuracy at the time of this publication, information and specifications described here in are subject to error or omission and to change without notice, and the listing of such information and specifications does not ensure product availability.

Belden provides the information and specifications herein on an "ASIS" basis, with no representations or warranties, whether express, statutory or implied. In no event will Belden be liable for any damages (including consequential, indirect, incidental, special, punitive, or exemplary damages) whatsoever, even if Belden has been advised of the possibility of such damages, whether in an action under contract, negligence or any other theory, arising out of or in connection with the use, or inability to use, the information or specifications described herein.

All sales of Belden products are subject to Belden's standard terms and conditions of sale.

Belden believes this product to be in compliance with all applicable environmental programs as listed in the data sheet. The information provided is correct to the best of Belden's knowledge, information and belief at the date of its publication. This information is designed only as a general guide for the safe handling, storage, and any other operation of the product itself or the one that it becomes a part of. The Product Disclosure is not to be considered a warranty or quality specification. Regulatory information is for guidance purposes only. Product users are responsible for determining the applicability of legislation and regulations based on their individual usage of the product.