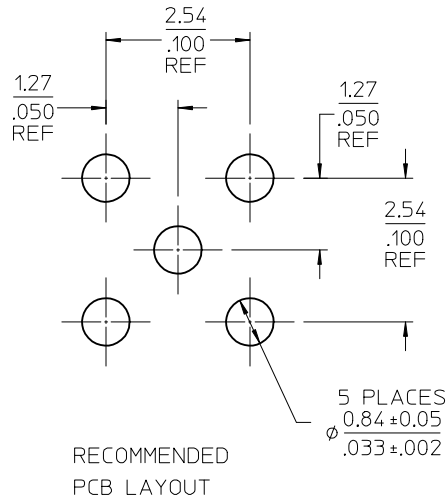
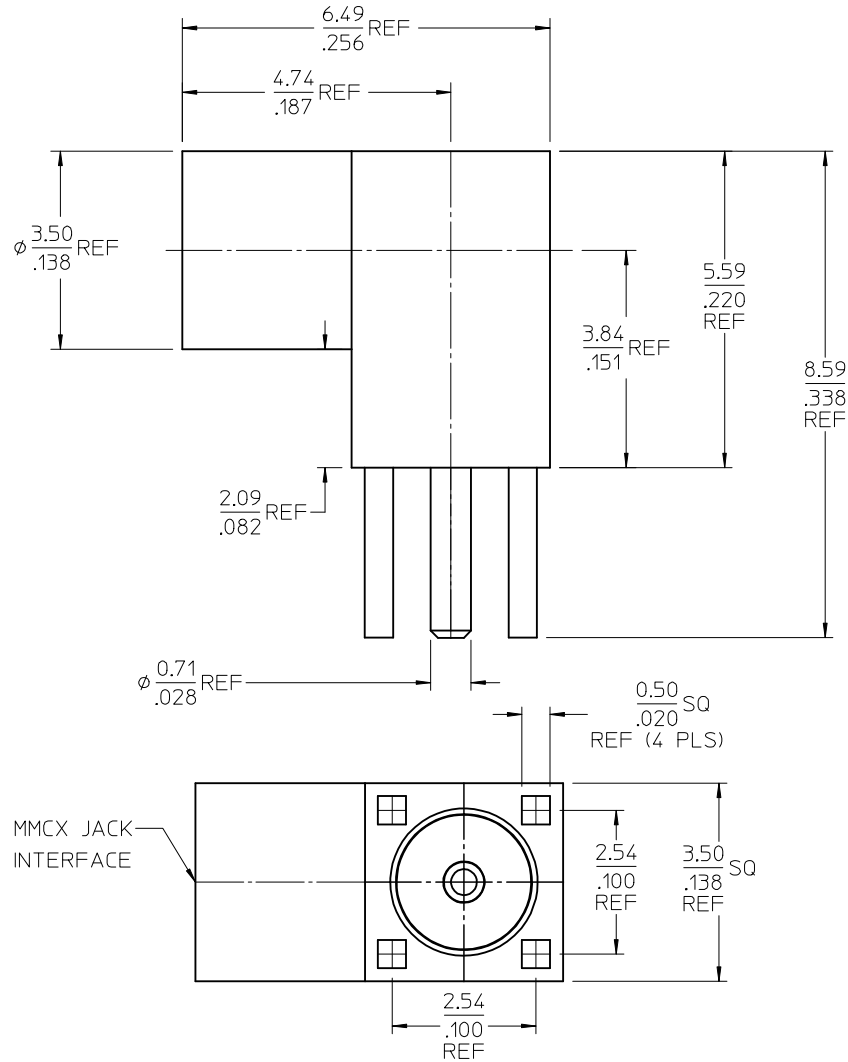
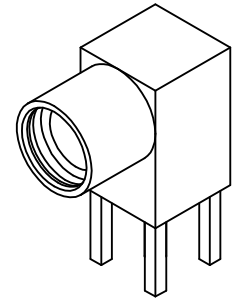


MATERIALS AND FINISHES

BODY BRASS
PLATED GOLD ,SEE TABLE

CENTER CONTACT BERYLLIUM COPPER
PLATED GOLD , SEE TABLE

INSULATOR TEFLON



ES-73599-0000-016	INTERFACE
SPECIFICATION	DESCRIPTION

73415-5262	OCNTACT PIN GOLD 1~3u", BODY GOLD 1u"
73415-5261	OCNTACT PIN GOLD 30u", BODY GOLD 1~3u"
PART NO.	DESCRIPTION

UNLESS OTHERWISE SPECIFIED DIMS ARE MILLIMETERS AND ANGLES ARE DEGREES.

- ALL OVER.
- NO CHATTER OR NON-UNIFORM SURFACE FINISH ALLOWED.
- PARTS TO BE FREE OF BURRS & SHARP EDGES 0.13(.005) MAX BREAK.
- EXTERNAL THREADS TO BE ROLLED OR SINGLE POINT.
- DIAMETERS TO BE CONCENTRIC WITHIN 0.08(.003) TIR.

CHG: MODIFIED	QUALITY SYMBOLS
INSULATORS	▽=0
EC NO: URF2013-0055	▽=0
DRWN:YCHENG 2012/07/26	
CHKD:	
APPR:MHUANG 2012/08/06	
DESCRIPTION	
REV: D1	

GENERAL TOLERANCES (UNLESS SPECIFIED)
mm INCH
4 PLACES ± --- ± ---
3 PLACES ± --- ± ---
2 PLACES ± --- ± ---
1 PLACE ± --- ± ---
ANGULAR ± 2 °
DRAFT WHERE APPLICABLE MUST REMAIN WITHIN DIMENSIONS

DIMENSION STYLE	SCALE
MM/IN	DESIGN UNITS
DRAWN BY	METRIC
DATE	THIRD ANGLE PROJECTION
SSS 2008/02/28	
CHECKED BY	
TEF 2008/02/28	
APPROVED BY	
GMH 2008/02/28	
MATERIAL NO.	DOCUMENT NO.
SEE TABLE	SD-73415-526
SIZE	SHEET NO.
C	1 OF 1

MMCX JACK, R/A, PCB	
50 OHMS, EWR-2734	
MMCX-J/PCB	
MOLEX INCORPORATED	
THIS DRAWING CONTAINS INFORMATION THAT IS PROPRIETARY TO MOLEX INCORPORATED AND SHOULD NOT BE USED WITHOUT WRITTEN PERMISSION	