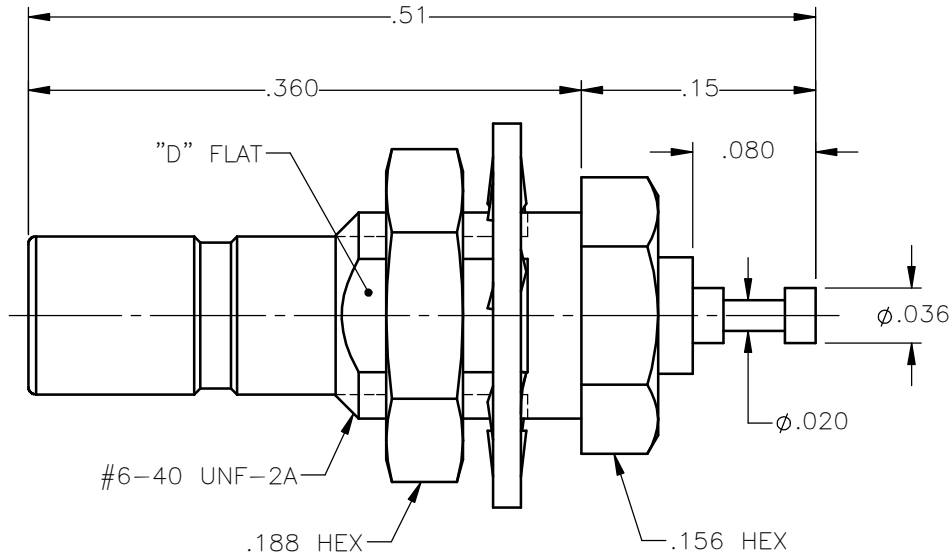


REVISIONS			
REV.	DESCRIPTION	DATE	APPROVED
A	INITIAL RELEASE	01/28/16	D.N.





NOTES:

MATERIALS:

1. BODY & NUT = BRASS PER ASTM B16, ALLOY C36000, TEMPER H02.
2. INSULATOR = VIRGIN WHITE TEFLON PER ASTM D1710, GRADE 1, TYPE I, CLASS "B".
3. CONTACT = BERYLLIUM COPPER PER ASTM B196, ALLOY C17300, TEMPER TD04.
4. LOCKWASHER = PHOSPHOR BRONZE PER ASTM B139, COPPER ALLOY C53400, TEMPER H04.

FINISHES:

1. CONTACT = GOLD PLATE PER ASTM B488-11, TYPE II, 50 $\mu$ in MIN, GRADE C, OVER 100 TO 200 $\mu$ in STRESS FREE SULFAMATE NICKEL PER AMS-QQ-N-290.
2. ALL OTHER METAL PARTS = GOLD PLATE PER ASTM B488-11, TYPE II, 30 $\mu$ in MIN, GRADE C OVER 100 TO 200 $\mu$ in COPPER STRIKE PER AMS 2418.

UNLESS OTHERWISE SPECIFIED DIMENSIONS ARE IN INCHES TOLERANCES ON	DWN:	DATE	 <b>Property of Radiall</b> This document cannot be reproduced or communicated to a third party without prior written permission of RADIALL.	
	D.N.	01/28/16		
DECIMAL	ANGLE	CHKD:	DATE	SSMB STRAIGHT JACK REAR MOUNT BULKHEAD RECEPTACLE TURRET CONTACT
		N.D.	01/28/16	
		APVD:	DATE	
REFERENCE:	MATERIALS & FINISHES:	J.M.	01/28/16	SIZE A FSCM NO. 19505 DWG NO. 7204-1511-000 REV A SCALE 8:1 THIRD ANGLE PROJECTION SHEET 1 OF 1
ORIGINATED: D.N. DATE: 01/28/16	SEE NOTES			

7204-1511-000