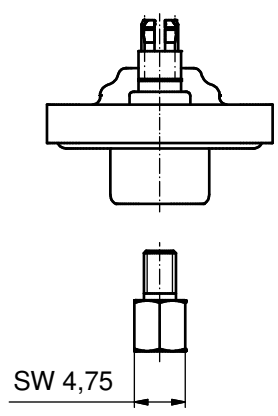
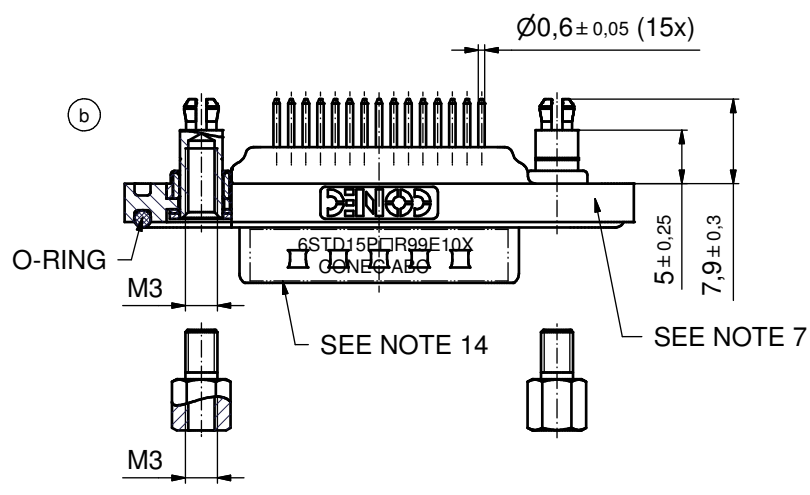
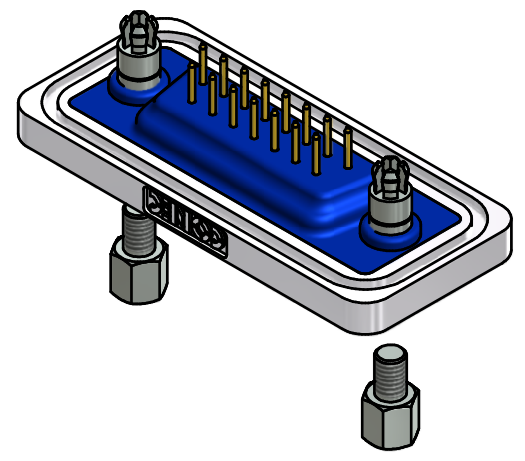
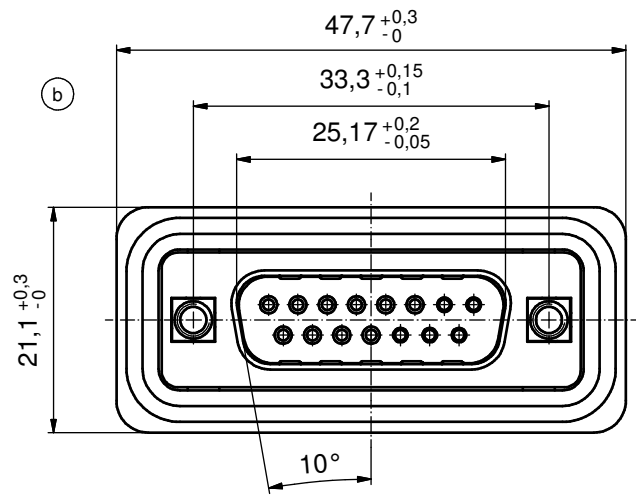
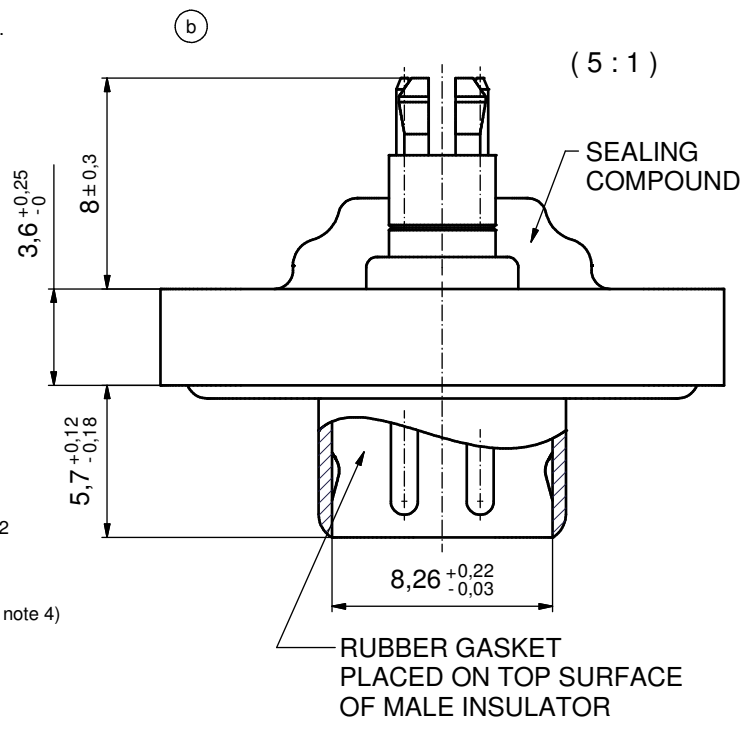


NOTES: (b)

1. FOR WAVESOLDERING (SOLDER BATH TEMPERATURE 240°C FOR 5 SEC. AND SOLDER PREHEAT 120°C FOR 120 SEC.)
2. METALSHELLS: COPPER ALLOY; min. 315µm TIN over 40-80µm NICKEL
3. INSULATORS: PBT GF UL 94 V-0, BLACK
4. CONTACTS: COPPER ALLOY; PLATING (SEE PART NO.):
 - PLEASE ADD C for 30µm HARD GOLD over min. 50µm NICKEL
 - PLEASE ADD B for 20µm HARD GOLD over min. 50µm NICKEL
 - PLEASE ADD A for GOLD FLASH over NICKEL (PREFERRED TYPE)
5. THREADED SPACER CLIPS: COPPER ALLOY; min. 200µm TIN over 80µm NICKEL
PCB-HOLE: $\varnothing 3.1 \pm 0.1$; PCB THICKNESS 1.6mm
6. COLLARS: COPPER ALLOY; min. 200µm TIN over 80µm NICKEL
7. FRAME: ZINC DIE CAST; NICKEL PLATED
8. O-RING: SILICON; BLUE
9. SEALING COMPOUND: PUR; BLUE
10. RUBBER GASKET: TPE; BLACK
11. HEXLOCKING SCREWS: STAINLESS STEEL
12. PCB HOLE DRILLINGS AND RECOMMENDED PANEL CUT-OUT ON SHEET 2
13. RECOMMENDED TORQUE FOR MOUNTING SCREW 35Ncm (3.1 in.LB) / max.40Ncm (3.5 in.LB)
14. CONNECTOR IS PART MARKED: **6STD15P□R99E10X CONEC ABC** (see note 4)



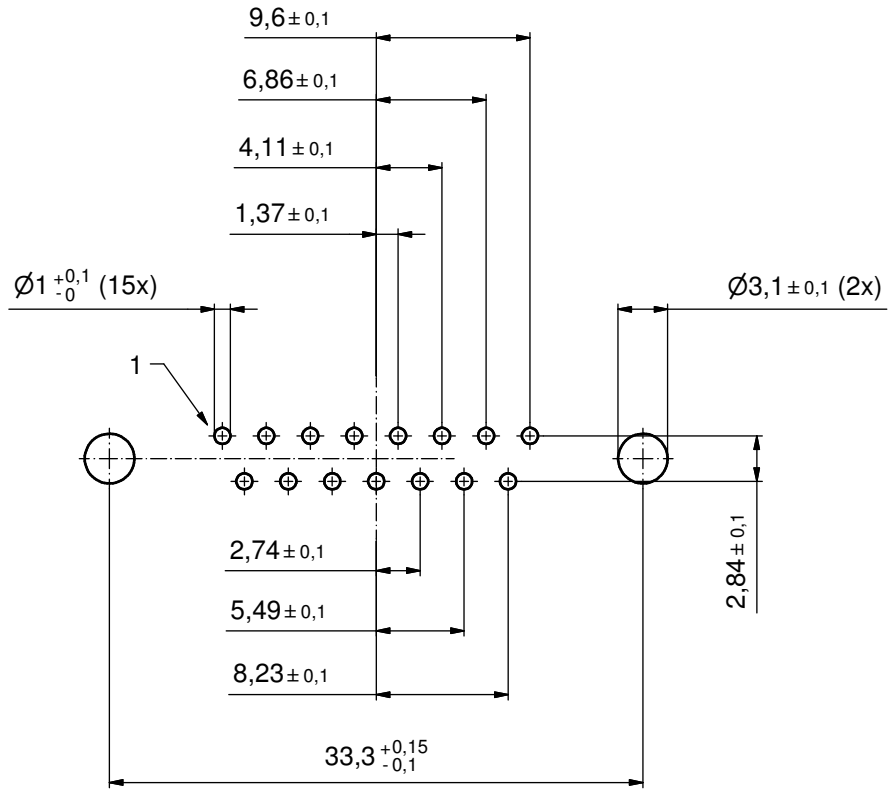
AT ALL TIMES WATER RESISTANT CONNECTORS NOT IN USE SHOULD BE COVERED WITH A CONEC WATER RESISTANT CAP OR WATER TIGHT HOOD.

Directive 2002/95/EC RoHS compliant

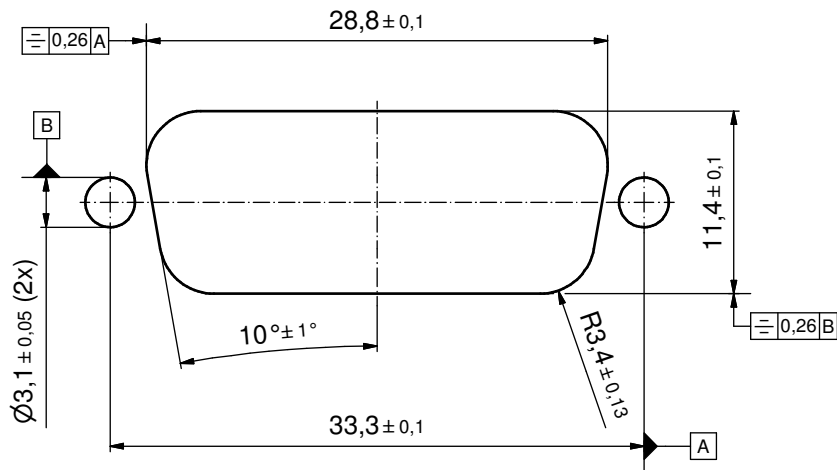
| | | | | | | |
|---|----------|------------|-------|--|----------|---------------------------------------|
| THIS DRAWING MAY NOT BE COPIED OR REPRODUCED IN ANY WAY, AND MAY NOT BE PASSED ON TO A THIRD PARTY WITHOUT WRITTEN PERMISSION. OWNERSHIP AND COPYRIGHT OF CONEC GmbH DO NOT ALTER CAD DRAWING BY HAND | | | | tolerance | | scale: 2:1 (5:1) |
| | | | | date | name | material: SEE NOTES |
| | | | | drawn | 30.06.08 | Lehmenkühle |
| | | | | appd. | 30.06.08 | Mickenbecker |
| | | | | norm | | |
| | | | d-old | | | |
| 5 x b | A4394 | 19.07.2012 | K.H. | title: D-SUB MALE 15pos. SOLDER PIN STRAIGHT threaded spacer clip and hexlocking screw | | |
| a | Original | | | | | |
| | | | rev. | description | date | dwg no: 15K1A244 |
| | | | | | | DIN-A3 |
| | | | | | | part no: 6STD15P□R99E10X (see note 4) |

(b) sh:1/2

P.C.B. HOLE DRILLINGS
(P.C.B. TOP SIDE)



RECOMMENDED PANEL CUT-OUT (b)



| | | | | | | | | | |
|--|-------------|----------|------|-----------|----------|----------------------|-----------------------|---|--|
| THIS DRAWING MAY NOT BE COPIED OR REPRODUCED IN ANY WAY, AND MAY NOT BE PASSED ON TO A THIRD PARTY WITHOUT WRITTEN PERMISSION. OWNERSHIP AND COPYRIGHT OF CONEC GmbH DO NOT ALTER CAD DRAWING BY HAND | | | | tolerance | | dim. in mm | scale: 3:1 | | |
| | | | | | | | material: SEE SHEET 1 | | |
| | | | | date | name | | title: | | |
| | | | | drawn | 30.06.08 | Lehmenkühler | | P.C.B. HOLE DRILLINGS RECOMMENDED PANEL CUT-OUT D-SUB MALE 15pos. | |
| | | | | appd. | 30.06.12 | Mickenbecker | | | |
| | | | norm | | d-old | | dwg no: | | |
| 1 x b | Ä4394 | 19.07.12 | K.H. | | | | 15K1A244 | | |
| a | Original | | | DIN-A3 | | | | | |
| rev. | description | date | name | | | part no: SEE SHEET 1 | | sh:2/2 | |