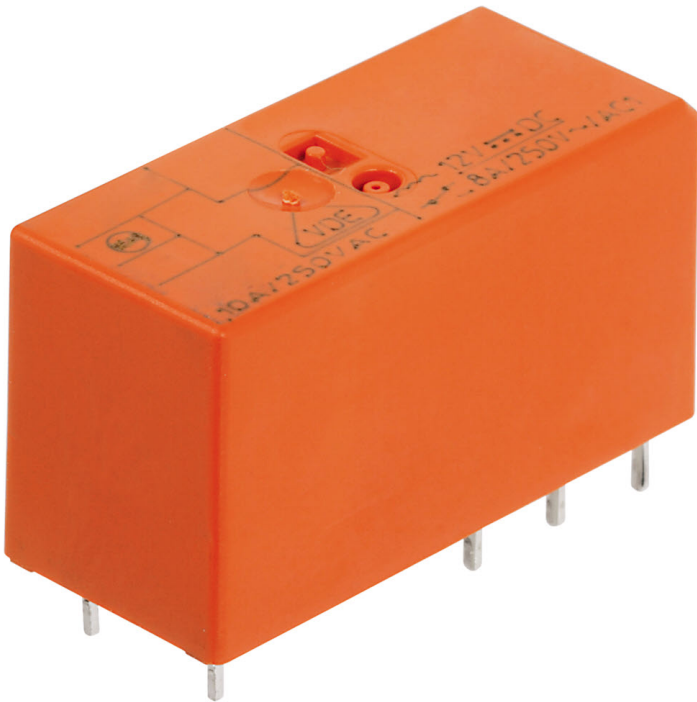


# Data sheet

## 6482.2 PRS 2/12V DC



Plug-in miniature power relay, Encapsulated design with power contact, 2 CO contact, Input voltage: 12 VDC

### Business data

Article number	6482.2
Article name	PRS 2/12V DC
GTIN (EAN)	4044211074210
Packaging unit	1
Quantity unit	PC
Weight per piece (not including packaging)	12.9 g
Weight per piece (including packaging)	14.71 g
Unit of weight	G
Customs number	85364900
Country of origin	AT
Product description	Relay, encapsulated construction

# Data sheet

## 6482.2 PRS 2/12V DC

### Technical data

#### Dimensions

Length	29 mm
Width	12.7 mm
Height	15.7 mm

#### Ratings

Overvoltage category	III
Contamination degree	3 (250 VAC) / 2 (400 VAC)

#### Input data

Working voltage	>8,4 VDC -
Drop-out voltage	1,2 VDC
Coil voltage	12 VDC -
Power consumption	0,4 W
Coil resistance	360 Ohm

#### Output data

Switching voltage / switching voltage max.	250 / 400 VAC
Continuous current max. / Inrush current max.	8 / 15 A
Contact configuration	2 CO contacts
Switching capacity, max.	2000 VA
Electrical lifespan (AC1)	1x10 <sup>5</sup>
Mechanical lifespan	30x10 <sup>6</sup>
Bounce time at close of the NO/NC contact	8/6 ms

#### Materials

Contact material	AgNi 90/10
Working temperature, min.	-40 °C
Working temperature, max.	70 °C

#### Further technical data

Degree of protection	RTII
Insulation voltage coil/contact	5 kV
Response/release time	8 / 6 ms
Insulation voltage contact/contact	1 kV
Vibration resistance NO/NC	20/5 g
Pinning	5 mm

# Data sheet

## 6482.2 PRS 2/12V DC



### Technical data

#### Environmental Product Compliance

REACH Conform	yes
REACH Reference date	2023-06-14
REACH Candidate Substance Note	No
RoHS Conform	yes

# Data sheet

## 6482.2 PRS 2/12V DC



---

### Approvals

---

#### Standards and regulations

---

CE compliant	yes
--------------	-----

---

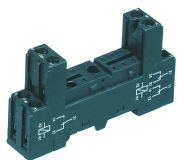
---

**Media**

---

### Accessories

#### ##INVERSE##CONTA-ELECTRONICS



Relay socket base PRS, for miniature power relay with 2 CO contacts, Screw connection, Plug-in option for input/suppression modules, Mounting type: Mounting rail TS 35

Article number	Article name	GTIN (EAN)	Packaging unit
<u>15136.2</u>	PRS 2	4044211046194	1 ST



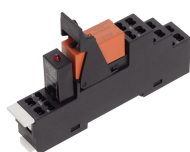
Relay socket base PRS, for miniature power relay with 2 CO contacts, Screw connection, Plug-in option for input/suppression modules, Mounting type: Mounting rail TS 35

Article number	Article name	GTIN (EAN)	Packaging unit
<u>15320.2</u>	PRS 2 G	4044211047115	1 ST



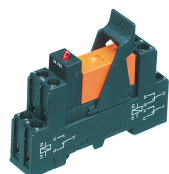
Relay socket base PRS, for miniature power relay with 2 CO contacts, Tension-spring connection, Plug-in option for input/suppression modules, Mounting type: Mounting rail TS 35

Article number	Article name	GTIN (EAN)	Packaging unit
<u>15789.2</u>	PRS 2 Z	4044211135256	1 ST



Pre-assembled relay module PRS..., Tension-spring connection, Consisting of: relay socket base, power contact relay, pluggable display/suppression module and holding clip, 2 CO contact, Input voltage: 12 VDC

Article number	Article name	GTIN (EAN)	Packaging unit
<u>15790.2</u>	PRSU 2Z/12V DC	4044211135348	10 ST



Pre-assembled relay module PRS..., Screw connection, Consisting of: relay socket base, power contact relay, pluggable display/suppression module and holding clip, 2 CO contacts, Input voltage: 12 VDC

Article number	Article name	GTIN (EAN)	Packaging unit
<u>15165.2</u>	PRSU 2/12V DC	4044211046446	10 ST

### ##INVERSE##CONTA-ELECTRONICS



Pre-assembled relay module PRS..., Screw connection, Consisting of: relay socket base, power contact relay, pluggable display/suppression module and holding clip, 2 CO contacts, Input voltage: 12 VDC

Article number	Article name	GTIN (EAN)	Packaging unit
<u>15414.2</u>	PRSU 2G/12V DC	4044211080808	1 ST



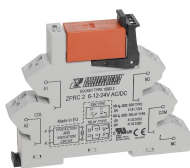
Relay socket base PRS, for miniature power relay with 2 CO contacts, Push-in connection, Plug-in option for input/suppression modules and cross connections, Mounting type: Mounting rail TS 35

Article number	Article name	GTIN (EAN)	Packaging unit
<u>16503.2</u>	PPRS 2	4044211236298	20 ST



Relay socket base PRS, for miniature power relay with 2 CO contacts, Push-in connection, Plug-in option for input/suppression modules and cross connections, Mounting type: Mounting rail TS 35

Article number	Article name	GTIN (EAN)	Packaging unit
<u>16503.2</u>	PPRS 2	4044211236298	20 ST



Plug-Relay-Compact (PRC) Complete, Consisting of base PRC... with tension-spring connection and pluggable miniature relay PRS... with power contact, Mounting type: Mounting rail TS 35, 2 CO contacts, Input voltage: 12 VAC/DC

Article number	Article name	GTIN (EAN)	Packaging unit
<u>15927.2</u>	ZPRCU 2 12V AC/DC	4044211137458	10 ST



Plug-Relay-Compact (PRC) Complete, Consisting of base PRC... with screw connection and pluggable miniature relay PRS... with power contact, Mounting type: Mounting rail TS 35, 2 CO contacts, Input voltage: 12 VAC/DC

Article number	Article name	GTIN (EAN)	Packaging unit
<u>15924.2</u>	PRCU 2 12V AC/DC	4044211137427	10 ST

# Data sheet

## 6482.2 PRS 2/12V DC

##INVERSE##CONTA-ELECTRONICS



Relay socket base PRS, for miniature power relay with 2 CO contacts, Push-in connection, Plug-in option for input/suppression modules and cross connections, Mounting type: Mounting rail TS 35

Article number	Article name	GTIN (EAN)	Packaging unit
<u>16503.2</u>	PPRS 2	4044211236298	20 ST