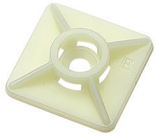
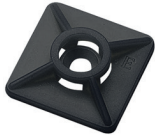




BI-DIRECTIONAL MOUNTS FOR SCREW FIXING



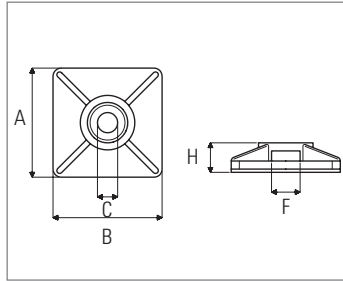
ABS Natural



ABS Black



PA 6.6 DT



Technical Data

CODE			NOMINAL DIMENSIONS					For cable tie width (Inches)
Natural	Black	Blue	(Inches) A	(Inches) B	(Inches) C	(Inches) F	(Inches) H	
-	5468	-	0,75	0,75	0,17	0,16	0,20	0,14
5472	5474	-	1,06	1,06	0,20	0,24	0,26	0,19
5467RB	5469RB	-	0,75	0,75	0,17	0,16	0,20	0,14
5473RB	5475RB	-	1,06	1,06	0,20	0,24	0,26	0,19
54673MV	54693MV	-	0,75	0,75	0,17	0,16	0,20	0,14
54733MV	54753MV	5473DTRB	1,06	1,06	0,20	0,24	0,26	0,19

COLORS

- ABS Natural
- ABS Black
- PA 6.6 DT

Lorem ipsum

MATERIALS

ABS: natural or additivated with carbon black for the black color

Halogen free

Material flammability rating:
UL 94-HB

Good resistance to: bases and greases

Limited resistance to: acids

Not resistant to: solvents, thinners, petroleum products

PA 6.6 DT: Polyamide 6.6 natural additivated with iron oxide for identification by metal detector or X-ray inspection equipment

Halogen free

Material flammability rating:
UL 94-HB

Excellent resistance to: aromatic solvents, oils, greases and derivates

Good resistance to: bases

Limited resistance to: acids

Not resistant to: phenols and to chlorinated solvents

PRODUCTS CONFORMITY:

CE Marking: Our products comply with the Low Voltage Directive 2014 / 35 / EU and the cable ties are tested in accordance with CE IEN IEC 62275 "Cable management system – Cable ties for electrical installations."

REACH: the materials used to produce the cable ties comply with 1907 / 2006 / CE (REACH)

Mechanical features and packaging

CODE		Material	Adhesive	MECHANICAL FEATURES			PACKAGING	
Natural	Black			Installation temperature (°F)	Working temperature (°F)	Newton Tensile strength (Pound)*	(pcs) Bag	(pcs) Box
-	5468	ABS	no	14°F ÷ 140°F	-40°F ÷ 167°F	29,211	100	10.000
5472	5474	ABS	no	14°F ÷ 140°F	-40°F ÷ 167°F	40,455	100	5.000
5467RB	5469RB	ABS	rubber base	59°F ÷ 104°F	-40°F ÷ 140°F	29,211	100	15.000
5473RB	5475RB	ABS	rubber base	59°F ÷ 104°F	-40°F ÷ 140°F	40,455	100	6.000
54673MV	54693MV	ABS	acrylic base	68°F ÷ 104°F	-40°F ÷ 167°F	29,211	100	15.000
54733MV	54753MV	ABS	acrylic base	68°F ÷ 104°F	-40°F ÷ 167°F	40,455	100	6.000

CODE		Material	Adhesive	MECHANICAL FEATURES			PACKAGING	
Blue				Installation temperature (°F)	Working temperature (°F)	Newton Tensile strength (Pound)	(pcs) Bag	(pcs) Box
5473DTRB		PA 6.6 DT	rubber base	59°F ÷ 104°F	-40°F ÷ 185°F	40,455	100	6.000

*Please consider a suitable safety factor equal or above 2

ADHESIVE DATA				
Adhesive	Bonding foam	Density (Kg/m ³)	U.V. Resistance	Usage
Rubber base	Polyethylene	100	limited (not recommended)	For immediate application
Acrylic base	Polyurethane	320	good	Leave to rest for 24hs