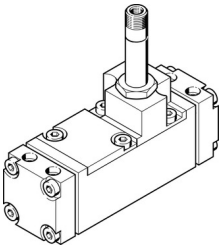


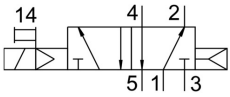
Air solenoid valve

CM-5/2-1/2-FH

Part number: 6223



Data sheet



Feature	Value
Valve function	5/2, monostable
Pneumatic working port	G1/2
Operating pressure	1.5 bar ... 8 bar
Symbol	00991049
LABS (PWIS) conformity	VDMA24364 zone III
Pneumatic connection 1	G1/2
Pneumatic connection 2	G1/2
Pneumatic connection 3	G1/2
Pneumatic connection 4	G1/2
Pneumatic connection 5	G1/2