
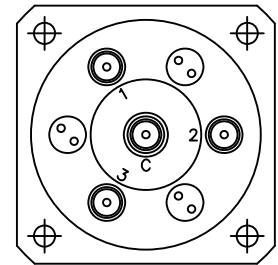
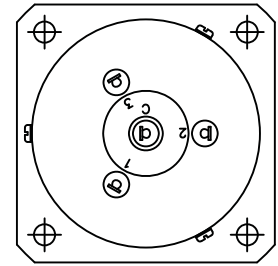
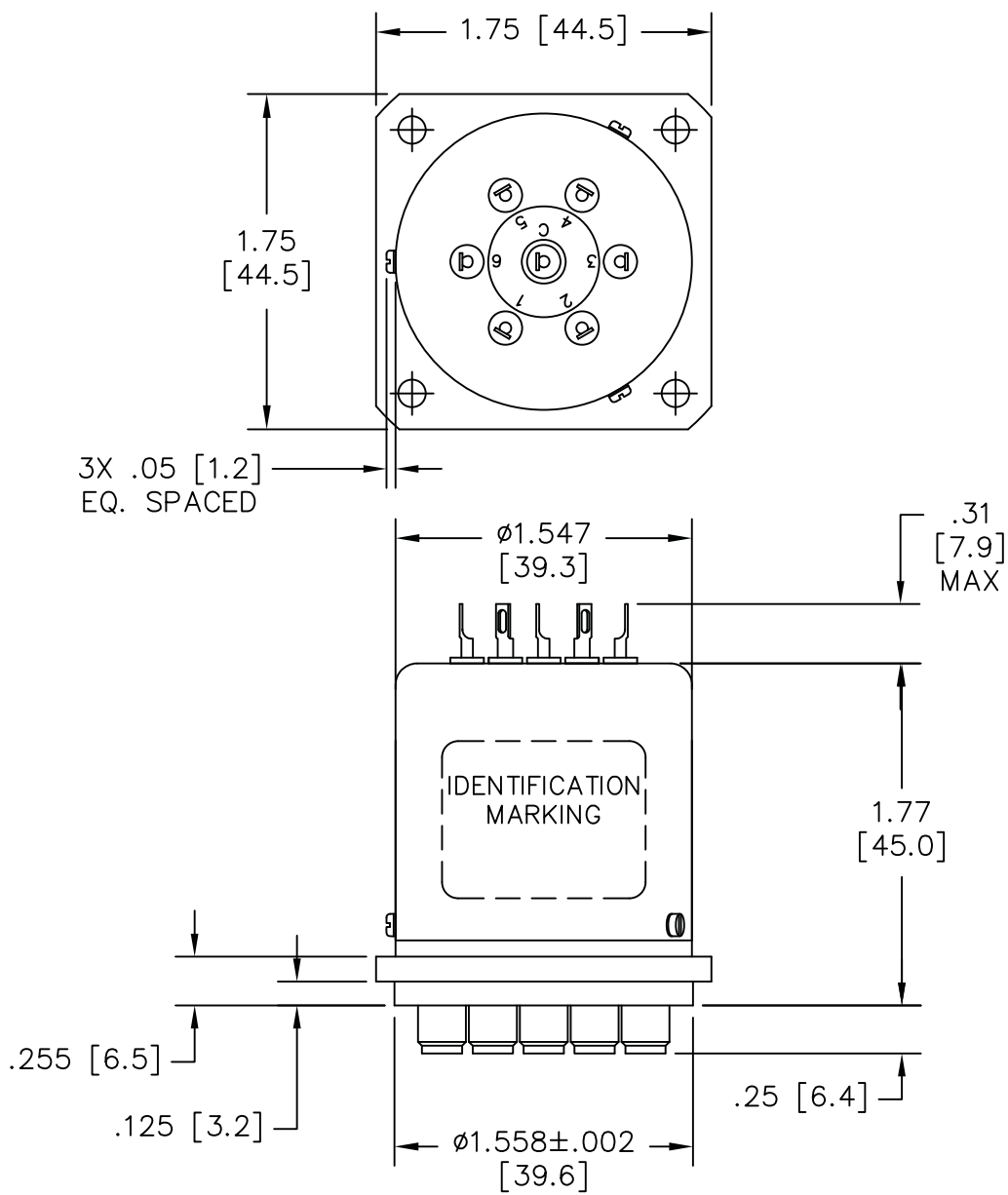


REVISIONS			
REV.	DESCRIPTION	DATE	APPROVED
A	PRODUCTION RELEASE	8/31/06	A.L.
B	REVISED PER ECO #9777	1/20/10	K.R.
C	REVISED PER ECO #10112	5/19/11	K.R.

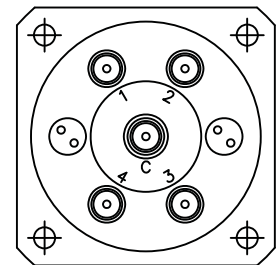
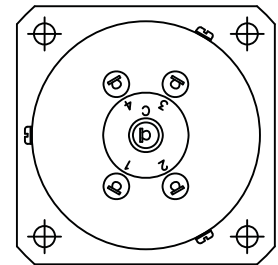
Nominal Coil Voltage	Part Number		
	SP3T	SP4T	SP6T
12 Vdc	535Y-5211	545Y-5211	565Y-5211
15 Vdc	535Y-5911	545Y-5911	565Y-5911
24 Vdc	535Y-5811	545Y-5811	565Y-5811
28 Vdc	535Y-5311	545Y-5311	565Y-5311

REVISIONS	C	C	C				 DowKey[®] Microwave CORPORATION	4822 McGrath Street Ventura, CA. 93003-5641 PH: (805) 650-0260 FAX: (805) 650-1734
SHEET NO.	1	2	3					
APPROVALS		DATE					A DOVER TECHNOLOGIES COMPANY SWITCH, 3-6 POSITION, NORMALLY OPEN 2.9mm (K) FEMALE CONNECTORS 40 GHz	
DRAWN	S. LEE	2/22/06						
ENG	G. NICKLAUS	3/21/08						
ENG. MGR.	R. SZNUK	3/21/08						
SALES MGR.	L. NEELEY	3/28/06						
D.A. MGR.	R. MATSUMOTO	3/23/06						
MFG. MGR.	R. GONZALEZ	3/23/06					CODE IDENT. NO. 00471	DWG. NO. 5X5Y-5X11
SCALE		NONE		FINAL ASSY:		SHEET 1 OF 3		

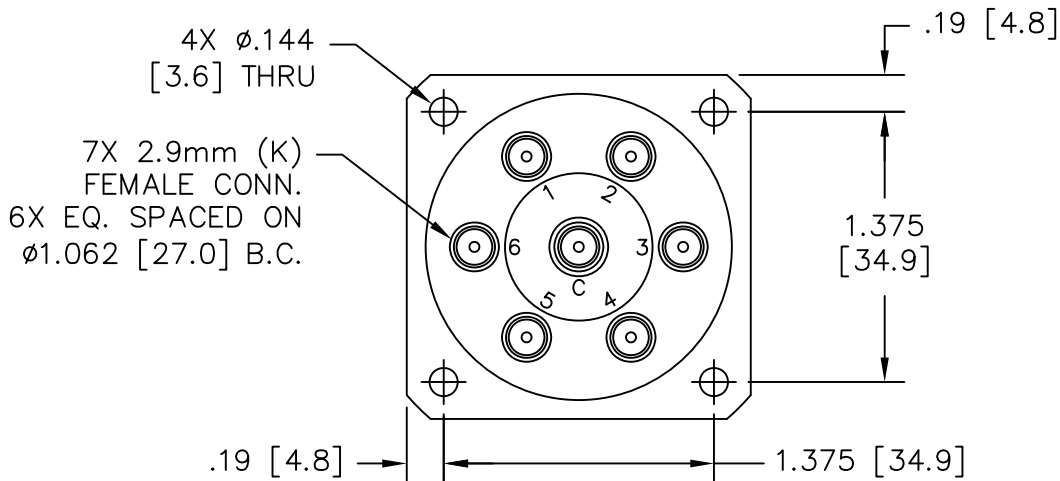
OUTLINE DRAWING:



3 POSITION



4 POSITION



[] MILLIMETERS

UNLESS OTHERWISE SPECIFIED TOLERANCES ARE: .XXX ±.010 ANGLES: ±3° .XX ±.030	CODE IDENT. NO. 00471	DWG. NO. 5X5Y-5X11	REV. C
	SCALE NONE	SHEET 2 OF 3	

SPECIFICATIONS:

1. RF CHARACTERISTICS:

1.1 FREQUENCY (GHz):	DC-6	6-12	12-18	18-26.5	26.5-40
1.2 VSWR (RATIO MAX):	1.30:1	1.40:1	1.50:1	1.70:1	1.95:1
1.3 INSERTION LOSS (dB MAX):	0.30	0.40	0.50	0.70	0.95
1.4 ISOLATION (dB MIN):	70	60	60	55	50
1.5 RF POWER (WATTS CW MAX):	40	30	25	15	8

RF POWER TEST CONDITIONS - SEA LEVEL, +25°C, LOAD VSWR 1:1

2. ACTUATION DATA:

2.1	NOMINAL VOLTAGE	OPERATING VOLTAGE	CURRENT (TYP)
			@ NOMINAL VOLTAGE & 25°C
	12	11-14	335mA
	15	13-17	280mA
	24	20-28	190mA
	28	24-32	160mA

2.2 SWITCHING TIME:	20ms MAX
2.3 OPERATING MODE:	NORMALLY OPEN

3. MECHANICAL:

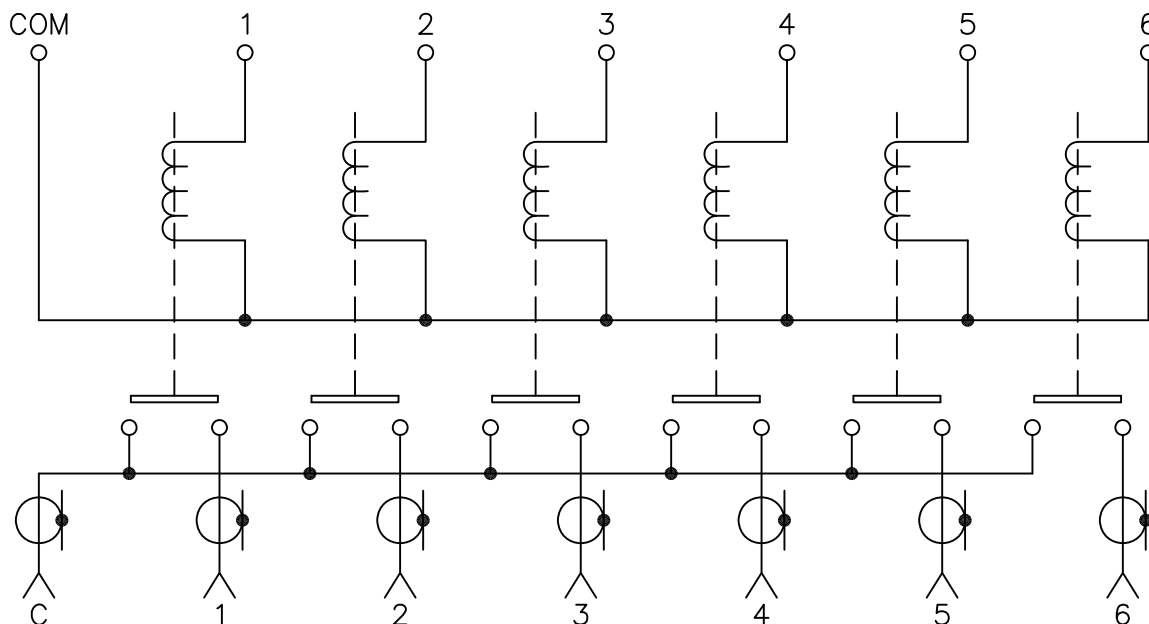
3.1 RF CONTACTS:	BREAK BEFORE MAKE
3.2 WEIGHT:	4.0oz. (113g.) NOMINAL
3.3 DESIGN LIFE:	1,000,000 CYCLES MIN

4. ENVIRONMENTAL:

4.1 OPERATING TEMPERATURE:	-25°C TO +65°C
4.2 STORAGE TEMPERATURE:	-55°C TO +85°C
4.3 SEAL:	SAND AND DUST

SCHEMATIC:

TERMINALS ARE NOT POLARITY SENSITIVE



CODE IDENT. NO. 00471	DWG. NO. 5X5Y-5X11	REV. C
SCALE NONE	SHEET 3 OF 3	