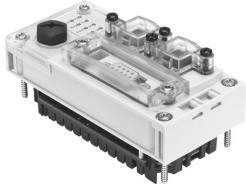


Control block CPX-CEC

Part number: 567346

FESTO



Data sheet

Feature	Value
Protocol	CODESYS level 2 EasyIP Modbus® TCP TCP/IP
Dimensions W x L x H	50 mm x 107 mm x 55 mm
Product weight	155 g
Ambient temperature	-5 °C ... 50 °C
Storage temperature	-20 °C ... 70 °C
Relative air humidity	95 % Non-condensing
Degree of protection	IP65 IP67
Corrosion resistance class (CRC)	2 - Moderate corrosion stress
LABS (PWIS) conformity	VDMA24364-B2-L
Note on materials	RoHS-compliant
Housing material	PA-reinforced PC
LED display (product-specific)	ERR: PLC runtime error M: modify/forcing active PL: load supply PS: electronics supply, sensor supply RUN: PLC status SF: system fault STOP: PLC status
LED display (bus-specific)	TP: link/traffic
Device-specific diagnostics	Channel-oriented and module-oriented diagnostics Undervoltage/short circuit of modules Diagnostic memory
Control elements	Rotary switch for RUN/Stop
IP address setting	DHCP Via CODESYS Via MMI
Ethernet interface	RJ 45 (socket, 8-pin)
Ethernet, number	1
Ethernet, supported protocols	TCP/IP, EasyIP, Modbus® TCP
Ethernet, connector plug	RJ45 Socket 8-pin
Ethernet, data transmission speed	10/100 Mbit/s
Parameterization	CODESYS V2.3
Baud rate	10/100 bit/s as per IEEE 802.3 (10BaseT) or 802.3u (100BaseTx)

Feature	Value
Configuration support	CODESYS V2.3
Additional functions	Diagnostic functions RS232 communication function
CPU data	32 MB flash 32 MB RAM 400 MHz processor
Nominal operating voltage DC	24 V
Nominal operating voltage DC load voltage	Without pneumatics: 18 ... 30V 24 V With midi/maxi pneumatic valves types: 21.6 ... 26.4 V With pneumatic type CPA: 20.4 ... 26.4 V With pneumatics type MPA: 18 ... 30 V
Intrinsic current consumption at nominal operating voltage	Typ. 85 mA
Power failure buffering	10 ms
Data interface	RS232 interface Sub-D, 9-pin, socket 9.6 ... 230.4 kBit/s Galvanically isolated
Programming, operating language	DE, EN
Programming language	as per IEC 61131-3 KOP AWL ST FUP AS Additionally CFC
Programming, file handling support	yes
Programming software	CODESYS provided by Festo V2.3
Program memory	4 MB user program
Processing time	Approx. 200 µs/1 k instruction
Function blocks	Read CPX module diagnostics CPX diagnostic status Copy CPX diagnostic trace and others
Flag	30 kB remanent data 8 MB global data memory CODESYS variable concept