

4

3

2

1


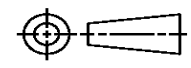
THIS DRAWING IS UNPUBLISHED. RELEASED FOR PUBLICATION
© COPYRIGHT ALL RIGHTS RESERVED.

LOC		DIST		REVISIONS			
P	LTR	DESCRIPTION		DATE	DWN	APVD	
	T1	ECR-14-002309		14FEB2014	GK	HMR	

REPLACED BY OCEAN STYLE APPLICATOR PART NUMBER 2151488-1

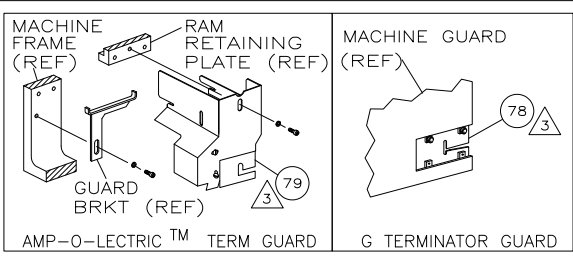
FOR REPLACEMENT PARTS FOR APPLICATOR 567297 REFER TO ADDITIONAL PAGE(S). SPARE PARTS KIT (IF LISTED) WILL REMAIN AVAILABLE.

THE REPLACEMENT OCEAN STYLE APPLICATOR HAS THE SAME TERMINATOR/PRESS INTERFACE AS APPLICATOR 567297

THIS DRAWING IS A CONTROLLED DOCUMENT.		DWN	GOPALAKRISHNA HV			TE Connectivity	
DIMENSIONS:		CHK	RAGHAVENDRA			NAME	
		TOLERANCES UNLESS OTHERWISE SPECIFIED:		APVD	RAGHAVENDRA		
		0 PLC ±	1 PLC ±	PRODUCT SPEC			
MATERIAL		2 PLC ±	3 PLC ±	APPLICATION SPEC			
FINISH		4 PLC ±	ANGLES ±	SIZE	CAGE CODE	DRAWING NO	RESTRICTED TO
				A3		©- 567297	
CUSTOMER ACCESSIBLE PRODUCTION DRAWING				SCALE	SHEET 1 OF 2	REV T1	

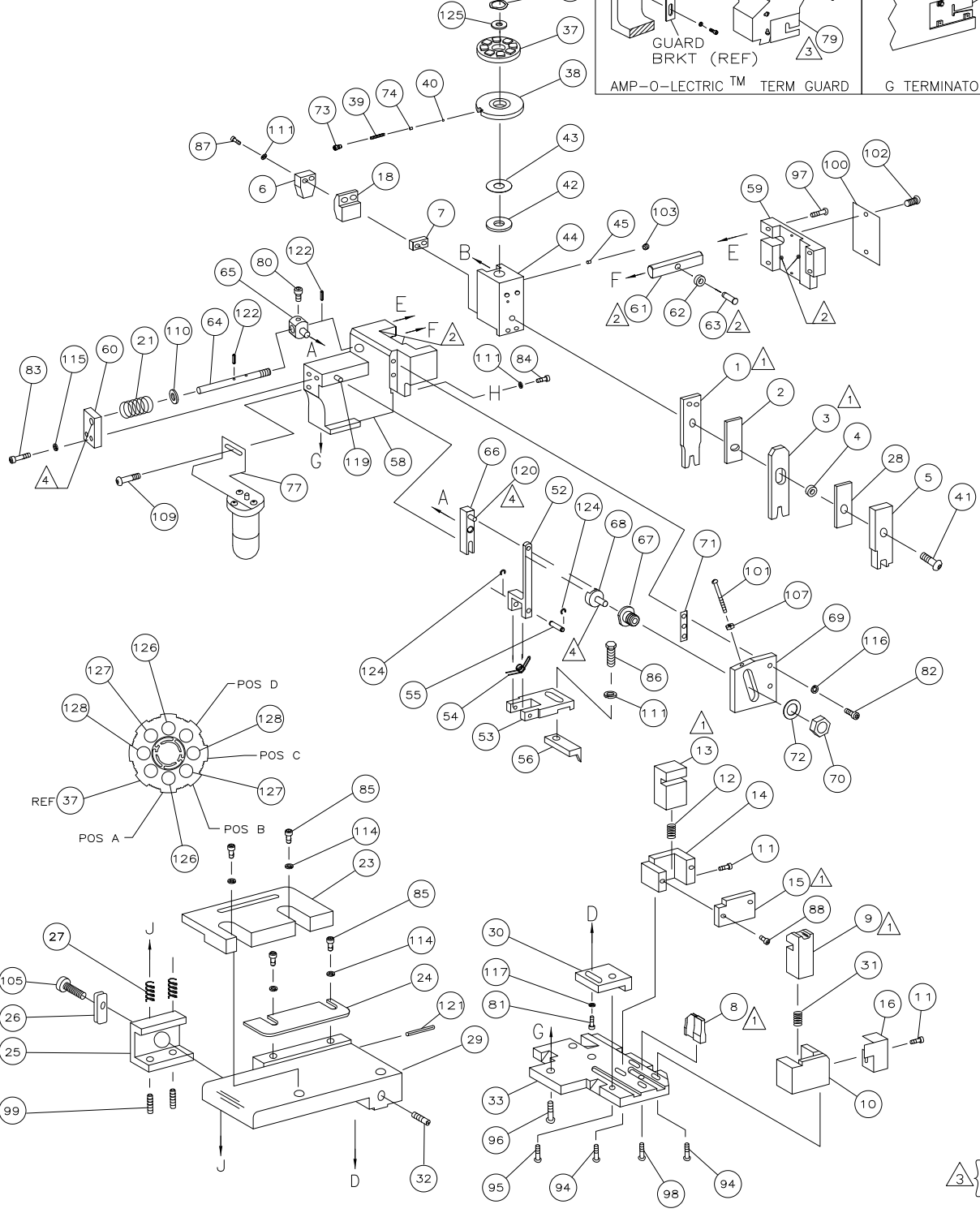
THIS DRAWING IS A CONTROLLED DOCUMENT.

PART NUMBER	REV	FIRST USED
567297-1	T	122500-1
567297-2	T	565435-5
567297-3	T	354500-1
7-567297-7	L	-



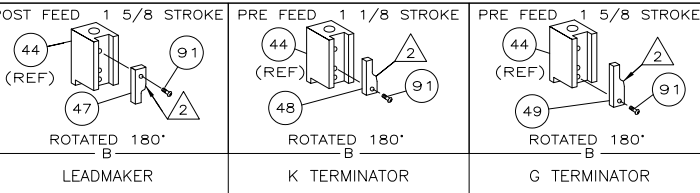
TERMINAL NAME: CRIMP SNAP-IN RECEPTACLE CONTACT		104480	
CRIMPING DATA			
PAD LTR	CRIMP HEIGHT	WIRE SIZE	
A	.036 ±.002 [0.91 ±.05mm]	22	
B	.032 ±.002 [0.81 ±.05mm]	24	
C	.030 ±.002 [0.76 ±.05mm]	26	
D	NOT	USED	
CRIMP	SIZE	TYPE	RANGE
WIRE	.042 [1.07mm]	F	26-22
INSUL	.062 [1.57mm]	0	.025-.060
WIRE STRIP LENGTH	TERM APPL SPEC	FEED	APPL INSTRUCTION
.125-.156	114-25038	.250	408-8040
			SET UP GAGE LAYOUT 458637-1 L1316

USED ON	
-1	LEADMAKER MECH POST FEED -77 SPARE TOOLING KIT
-2	BENCH MODEL K MECH PRE FEED
-3	BENCH MODEL G MECH PRE FEED

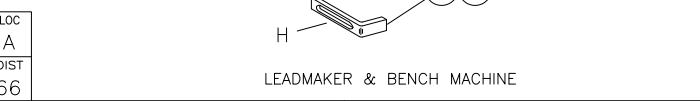


QTY REQD PER ASSY	PART NO	DESCRIPTION	ITEM NO		
2	2	5-354779-2	PIN, WIRE DISC (.3250)C	129	
2	2	4-354779-8	PIN, WIRE DISC (.3230)B	127	
2	2	4-354779-2	PIN, WIRE DISC (.3200)A	126	
1	1	986950-1	WASHER, FLAT PRECISION	125	
REF	REF	21045-3	RING, RET "C" (Ø.187) FD FING PIN	124	
REF	REF	5-21028-1	PIN, SLT SPR (Ø.125x.50) ADJ ROD	122	
1	1	4-21028-0	PIN, SLT SPR (Ø.093x.75) ST GDE PL	121	
REF	REF	1-21030-1	PIN, DOWEL (Ø.187x.50) LEVER	120	
REF	REF	1-21030-6	PIN, DOWEL (Ø.187x1.25) HOUSING	119	
1	1	21024-5	WASHER, LOCK (#10) ADJ BLOCK	117	
REF	REF	21024-5	WASHER, LOCK (#10) ADJ PLATE	116	
REF	REF	21024-5	WASHER, LOCK (#10) FEED GDE ROD	115	
4	4	21024-2	WASHER, LOCK (#4) FRONT STP GUIDE	114	
4	4	21024-4	WASHER, LOCK (#8) STRIPPER	111	
REF	REF	21899-4	WASHER, FLAT (Ø5/16) SCREW ADJ	110	
1	1	2-21002-6	SCR, BHC (10-32x.38) LUBE ASSY	109	
REF	REF	21018-5	NUT, HEX (6-32) FEED ADJ	107	
1	1	22353-8	SCR, SHLD (Ø.187x.25) DRAG LEVER	105	
1	1	21009-2	SCR, SKT SET (1/4-20x.25 LW) RAM	103	
2	2	21017-2	SCR, DRIVE (#2x.19) ID PLATE	102	
REF	REF	6-23715-5	SCR, PAN HD (6-32x1.50) FEED ADJ	101	
1	1	461264-1	PLATE, IDENTIFICATION	100	
2	2	5-21006-6	SCR, SET, 10-32 X .75	99	
1	1	22733-8	SCR, BHC (8-32x.38 LW) ANVIL	98	
REF	REF	2-21002-9	SCR, BHC (10-32x.75) CAP	97	
REF	REF	2-22733-8	SCR, BHC (1/4-20x.62) HOUSING	96	
REF	REF	2-21002-7	SCR, BHC (10-32x.50) SG ADJ BLOCK	95	
4	4	2-21002-2	SCR, BHC (8-32x.50) TERM H DWN	94	
1	1	1-21002-7	SCR, BHC (6-32x.38) CAM	91	
2	2	1-21000-8	SCR, SHC (6-32x.25) R SHEAR PLATE	88	
2	2	2-21000-8	SCR, SHC (8-32x.62) DEP-HOLD	87	
1	1	2-22603-0	SCR, HEX HD (8-32x.31) FEED FINGER	86	
4	4	1-21000-3	SCR, SHC (4-40x.25) F ST GUIDE	85	
1	1	2-21000-7	SCR, SHC (8-32x.50) STRIPPER	84	
REF	REF	3-21000-7	SCR, SHC (10-32x.75) FEED ROD GD	83	
REF	REF	3-21000-6	SCR, SHC (10-32x.62) FD ADJ BLK	82	
1	1	3-21000-4	SCR, SHC (10-32x.38) SG ADJ BL	81	
REF	REF	3-21000-4	SCR, SHC (10-32x.38) PIVOT BLK	80	
REF	REF	455749-1	GUARD, WINDOW	79	
REF	REF	679532-1	INSERT, GUARD	78	
1	1	1-465184-0	LUBRICATOR ASSY	77	
1	1	690603-1	SPRING, ASSIST	74	
1	1	23030-1	SCR, SHC (6-32x.25 SL) INS DISC	73	
REF	REF	458109-1	WASHER, SPECIAL	72	
REF	REF	690517-1	SPACER	71	
-77	-3	-2	-1	U/M	

QTY REQD PER ASSY	PART NO	DESCRIPTION	ITEM NO		
1	1	694433-7	PAWL, FEED	56	
REF	REF	240624-1	PIN, FEED FINGER	55	
REF	REF	691499-1	SPRING, FEED FINGER	54	
REF	REF	690541-1	HOLDER, FEED FINGER	53	
REF	REF	455679-1	LEVER, TERMINAL FEED ARM	52	
1	1	690602-6	CAM, PRE-FEED 1 5/8 ST	49	
1	1	690602-5	CAM, PRE-FEED 1 1/8 ST	48	
1	1	690501-4	CAM, POST-FEED 1 5/8 ST	47	
1	1	459456-1	APPLICATOR, BASIC (SUBASSY)	46	
1	1	690191-1	PLUG, NYLON	45	
1	1	455673-1	RAM	44	
1	1	690125-1	WASHER, LAMINATED	43	
1	1	690124-1	WASHER, RAM	42	
1	1	7-21002-9	BOLT, CRIMPER (5/16x1.00)	41	
1	1	23241-6	BALL, STEEL	40	
1	1	690170-1	SPRING, COMPRESSION	39	
1	1	690142-1	DISC, INSULATION	38	
1	1	354777-1	WIRE DISC	37	
1	1	22480-5	WASHER, SPRING	36	
1	1	690212-1	POST, RAM	35	
REF	REF	455675-1	PLATE, BASE	33	
1	1	690432-3	SCREW, ADJUSTMENT	32	
1	1	6-22279-3	SPRING, SHEAR (FRONT)	31	
REF	REF	455689-1	BLOCK, STRIP GUIDE ADJ	30	
1	1	844048-1	PLATE, STRIP GUIDE	29	
1	1	455888-8	SPACER, FRONT SHEAR DEP	28	
2	2	1-22284-0	SPRING, DRAG	27	
1	1	356835-1	LEVER, DRAG RELEASE	26	
1	1	240792-1	DRAG, TERMINAL	25	
1	1	690438-1	GUIDE, STRIP (REAR)	24	
1	1	690487-1	GUIDE, STRIP (FRONT)	23	
1	1	690472-2	STRIPPER	22	
REF	REF	4-22284-9	SPRING, FEED RETURN	21	
1	1	691353-1	STRIPPER	19	
1	1	2-690518-4	HOLDER, TERMINAL	18	
1	1	691667-1	GUARD, CHIP, FRONT	16	
1	1	1-690691-3	PLATE, SHEAR (REAR)	15	
1	1	690462-1	HOLDER, SHEAR (REAR)	14	
1	1	690463-1	SHEAR, FLOAT (REAR)	13	
1	1	3-22280-3	SPRING, SHEAR	12	
2	2	690461-1	STOP, SHEAR	11	
1	1	468798-1	HOLDER, SHEAR (FRONT)	10	
1	1	462006-3	SHEAR, FLOAT (FRONT)	9	
1	1	904132-6	ANVIL	8	
1	1	240641-1	SPACER, DEPRESSOR (REAR)	7	
1	1	690468-2	DEPRESSOR, SHEAR (REAR)	6	
1	1	1-455889-4	DEPRESSOR, SHEAR (FRONT)	5	
1	1	238011-7	SPACER, BLOCK CRIMPER	4	
1	1	8-456135-3	CRIMPER, INSULATION	3	
1	1	455888-6	SPACER, CRIMPER	2	
1	1	456401-3	CRIMPER, WIRE	1	
-77	-3	-2	-1	U/M	



- 1 RECOMMENDED SPARE PARTS.
- 2 GREASE LIGHTLY.
- 3 GUARD MUST BE IN PLACE WHEN OPERATING APPLICATOR IN A BENCH MACHINE.
- 4 LUBRICATE DAILY USING NO. 20 MACHINE OIL.
- 5. ITEMS WITH QTY OF REF SPECIFIED (EXCEPT ITEMS 78 AND 79) ARE USED ON ITEM 46.



THIS INFORMATION IS CONFIDENTIAL AND PROPRIETARY TO TYCO ELECTRONICS CORPORATION AND ITS WORLDWIDE SUBSIDIARIES AND AFFILIATES. IT MAY NOT BE DISCLOSED TO ANYONE OTHER THAN TYCO ELECTRONICS PERSONNEL, WITHOUT WRITTEN AUTHORIZATION FROM TYCO ELECTRONICS CORPORATION, HARRISBURG, PENNSYLVANIA, USA.

LOC
A
DIST
66

P	LTR	REVISION RECORD	DATE	DN	APVD	TE
T	ECR-09-027431		12-2009	MY		

DIMENSIONS: INCHES	TOLERANCES UNLESS OTHERWISE SPECIFIED:	0 PLC ±.005	1 PLC ±.003	2 PLC ±.002	3 PLC ±.001	4 PLC ±.0005
D.SALTZER 11-15-95 MATERIAL - HEAT TREAT -		C.ERISMAN 11-16-95				
APVD T.BEDDICK 11-16-95		Tyco Electronics Corporation Harrisburg, PA 17105-3608				
SIDE FEED HDM APPLICATOR						
SCALE: A1	SIZE: 11	DRAWING NO: 567297	SHEET: 1	OF: 1	REV: T	