

4

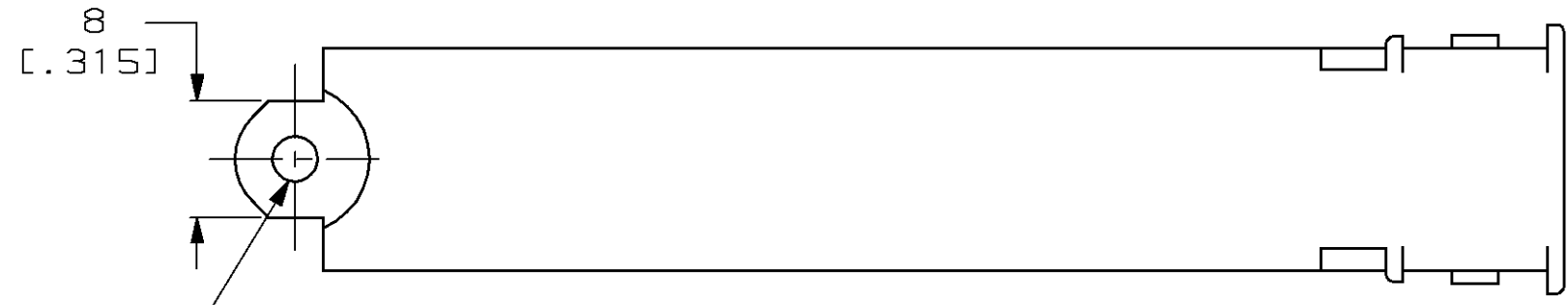
3

2

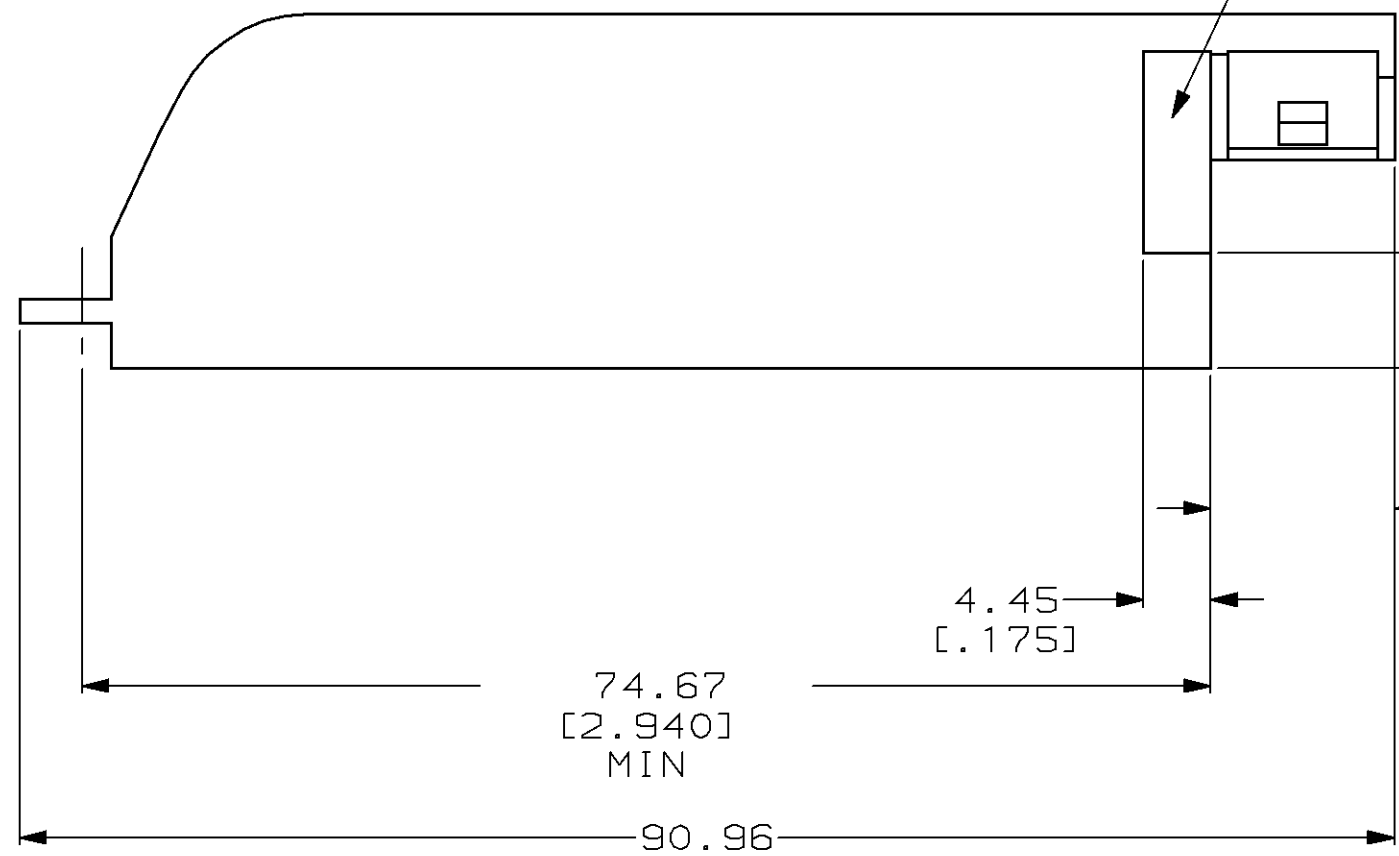
1

THIS DRAWING IS UNPUBLISHED. RELEASED FOR PUBLICATION, 19 .
 © COPYRIGHT 19 BY AMP INCORPORATED. ALL RIGHTS RESERVED.

LOC	DIST	REVISIONS			
P	LTR	DESCRIPTION	DATE	DWN	APVD
AA	20	A	REDRAWN PER EC 0502-0051-98	21 JAN 98	CW MH



8
[.315]
Ø3.15
[.124]
MAX



1.45 [.057]
MIN DEEP RECESS

74.67
[2.940]
MIN

90.96
[3.581]
REF

4.45
[.175]

7.62
[.300]

12.17
[.479]
REF

3.3
[.130]
REF

18.42
[.725]
REF

23.55
[.927]
MAX

13.77
[.542]
REF

15.37
[.605]
MAX

GRAY	552617-4
BLACK	552617-1
COLOR	PART NO.

THIS DRAWING IS A CONTROLLED DOCUMENT.		DWN T. PITTS 02JUL76	AMP AMP Incorporated Harrisburg, PA 17105-3608															
DIMENSIONS: mm [INCHES]		CHK J. COMPTON 02JUL76																
TOLERANCES UNLESS OTHERWISE SPECIFIED:		APVD G.H. FOSTER 02JUL76	NAME COVER, SLIDE-ON, 50 POSN, CHAMP®															
<table border="0"> <tr><td>0 PLC</td><td>±-</td></tr> <tr><td>1 PLC</td><td>±-</td></tr> <tr><td>2 PLC</td><td>±-</td></tr> <tr><td>3 PLC</td><td>±.005</td></tr> <tr><td>4 PLC</td><td>±-</td></tr> <tr><td>ANGLES</td><td>±-</td></tr> </table>		0 PLC	±-	1 PLC	±-	2 PLC	±-	3 PLC	±.005	4 PLC	±-	ANGLES	±-	PRODUCT SPEC -	SIZE A3	CAGE CODE 00779	DRAWING NO C- 552617	RESTRICTED TO -
0 PLC	±-																	
1 PLC	±-																	
2 PLC	±-																	
3 PLC	±.005																	
4 PLC	±-																	
ANGLES	±-																	
MATERIAL NORYL 990		FINISH -	WEIGHT -	SCALE 2:1		SHEET 1 OF 1	REV A											
CUSTOMER DRAWING																		