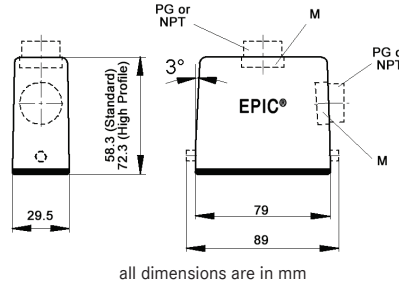
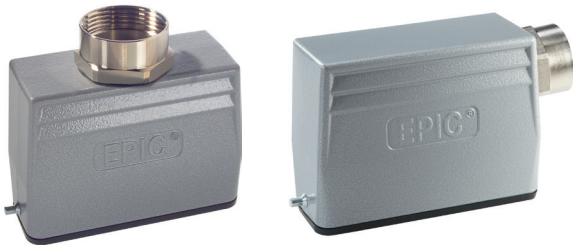


EPIC® HA 16 standard & high profile hood

Hood with single lever bolts



Technical data

IP Protection class: UL 50E Type 4, 12 IP65

Complete the installation

HA dust covers page 429

Approvals

UL US RoHS DE

PG

size	PG hood part number	Profile	SKINTOP® gland	
			plastic	metal
Top entry				
16	105650	std	53015040	52015740
16	704902	high	53015040	52015740
21	10565200	std	53015050	52015750
21	704904	high	53015050	52015750
Side entry				
16	105640	std	53015040	52015740
16	704922	high	53015040	52015740
21	105645	std	53015050	52015750
21	704924	high	53015050	52015750

PG hood provided with EPIC® SM/SP gland

NPT

size	NPT hood part number	Profile	SKINTOP® gland	
			plastic	metal
Top entry				
1/2"	105650NP	std	S1112	53112024
1/2"	704902NP	high	S1112	53112024
3/4"	105652NP	std	S1134	53112034
3/4"	704904NP	high	S1134	53112034
Side entry				
1/2"	105640NP	std	S1112	53112024
1/2"	704922NP	high	S1112	53112024
3/4"	105645NP	std	S1134	53112034
3/4"	704924NP	high	S1134	53112034

NPT hood provided with NPT fitting

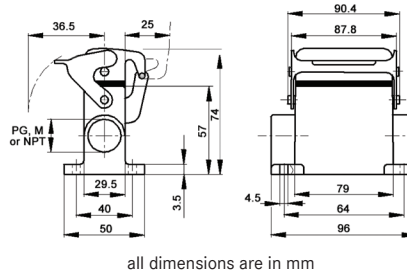
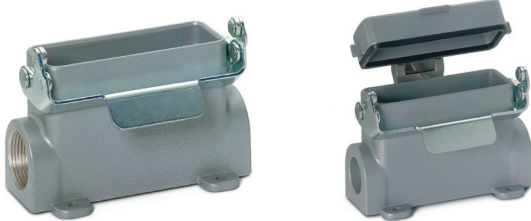
metric

size	Metric hood* part number	Profile	SKINTOP® gland	
			plastic	metal
Top entry				
20	19565000	std	53111020	53112020
20	79490200	high	53111020	53112020
25	19565300	std	53111030	53112030
25	79490400	high	53111030	53112030
Side entry				
20	19564000	std	53111020	53112020
20	79492200	high	53111020	53112020
25	19564500	std	53111030	53112030
25	79492400	high	53111030	53112030

* Top-entry and high profile hoods do not come with a neck

EPIC® HA 16 surface mount base

Surface mount with single lever



Technical data

IP Protection class: UL 50E Type 4, 12 IP65

Complete the installation

HA dust covers page 429

Approvals

UL US RoHS DE

PG

size	PG base part number	Dust cover	SKINTOP® gland	
			plastic	metal
One entry				
16	105671	no	53015040	52015740
16	704852	yes	53015040	52015740
21	105670	no	53015050	52015750
21	704854	yes	53015050	52015750
Two entries				
16	704862	yes	53015040	52015740
21	105680	no	53015050	52015750

PG base provided with EPIC® SM/SP gland

NPT

size	NPT base part number	Dust cover	SKINTOP® gland	
			plastic	metal
One entry				
1/2"	105671NP	no	S1112	53112024
1/2"	704852NP	yes	S1112	53112024
3/4"	105670NP	no	S1134	53112034
3/4"	704854NP	yes	S1134	53112034
Two entries				
1/2"	704862NP	yes	S1112	53112024
3/4"	105680NP	no	S1134	53112034

NPT base provided with NPT fitting

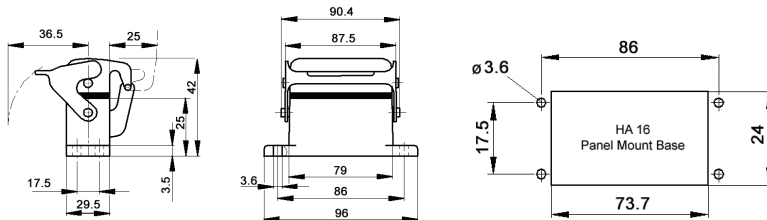
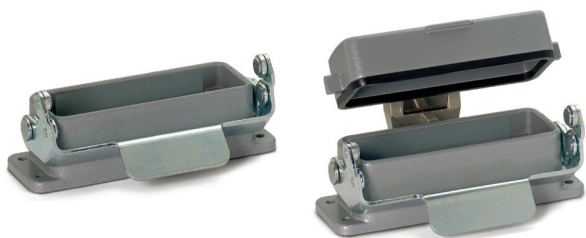
metric

size	Metric base part number	Dust cover	SKINTOP® gland	
			plastic	metal
One entry				
20	19567100	no	53111020	53112020
20	79485200	yes	53111020	53112020
25	19567000	no	53111030	53112030
25	79485400	yes	53111030	53112030
Two entries				
25	19568000	no	53111030	53112030
25	79486400	yes	53111030	53112030

If not otherwise specified, all values relating to the product are nominal values. Photographs are not to scale and are not true representations of the products in question.

EPIC® HA 16 panel mount base

Panel mount base with single lever



all dimensions are in mm

Technical data

IP Protection class: UL 50E Type 4, 12
IP65

Complete the installation

HA dust covers
page 429

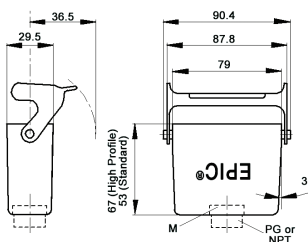
Approvals



Dust cover included	Part number
no	104620C0
yes	704740C0

EPIC® HA 16 cable coupler hood

Cable coupler with single lever



all dimensions are in mm

Technical data

IP Protection class: UL 50E Type 4, 12
IP65

Complete the installation

HA dust covers
page 429

Approvals



PG

PG coupler		SKINTOP® gland	
size	part number	plastic	metal
Standard profile			
PG 16	105630	53015040	52015740
High profile			
PG 16	704802	53015040	52015740
PG 21	704804	53015050	52015750

PG coupler provided with EPIC® SM/SP gland

NPT

NPT coupler		SKINTOP® gland	
size	part number	plastic	metal
Standard profile			
1/2"	105630NP	S 1112	53112024
High profile			
1/2"	704802NP	S 1112	53112024
3/4"	704804NP	S 1134	53112034

NPT coupler provided with NPT fitting

metric

Metric coupler*		SKINTOP® gland	
size	part number	plastic	metal
Standard profile			
M20	19563000	53111020	53112020
M25	19563200	53111030	53112030
High profile			
M20	79480200	53111030	53112030
M25	79480400	53111030	53112030

* Metric couplers do not come with a neck