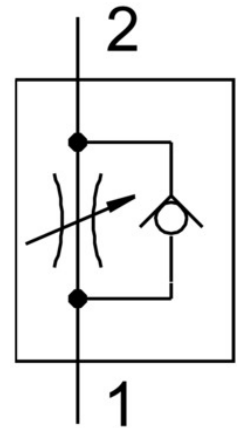


One-way flow control valve GR-QB-5/32-U

Part number: 534680

FESTO



Data sheet

Feature	Value
Valve function	Flow control non-return function
Pneumatic connection 1	QB-5/32
Pneumatic connection 2	QB-5/32
Actuation type	Manual
Adjusting element	Slotted screw
Type of mounting	Optionally: Line installation With through-hole
Standard nominal flow rate in flow control direction	216.1 l/min
Standard nominal flow rate in non-return direction	76.271 l/min ... 216.102 l/min
Operating pressure	-0.951 bar ... 7.998 bar
Ambient temperature	0 °C ... 60 °C
Housing material	PBT-reinforced
Mounting position	Any
Symbol	00991453
Standard flow rate in flow control direction 6 -> 0 bar	381.4 l/min
Standard flow rate in non-return direction at 6 -> 0 bar	305.085 l/min ... 406.78 l/min
Operating medium	Compressed air as per ISO 8573-1:2010 [7:4:4]
Information on operating and pilot media	Operation with oil lubrication possible (required for further use)
LABS (PWIS) conformity	VDMA24364 zone III
Temperature of medium	0 °C ... 60 °C
Product weight	11.34 g
Material of screwed plug	Brass Nickel-plated
Note on materials	RoHS-compliant
Seals material	NBR
Releasing ring material	POM
Knurled head material	Brass Nickel-plated

Feature	Value
Material of adjusting screw	Brass Nickel-plated