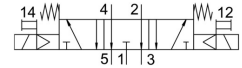
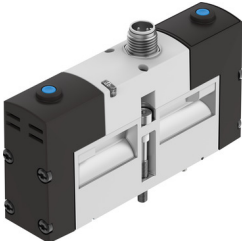


# Air solenoid valve VSVA-B-P53E-H-A1-1R5L

Part number: 534560

FESTO



## Data sheet

| Feature                                      | Value   |
|--|---|
| Valve function                               | 5/3, exhausted  |
| Actuation type                               | Electrical  |
| Width  | 26 mm   |
| Standard nominal flow rate                   | 1000 l/min  |
| Pneumatic working port                       | Sub-base, size 26 mm according to ISO 15407-1                             |
| Operating voltage                            | 24V DC  |
| Operating pressure                           | 0.3 MPa ... 0.8 MPa   |
| Operating pressure                           | 3 bar ... 8 bar   |
| Structural design                            | Piston gate valve   |
| Reset method                                 | Mechanical spring   |
| Certification                                | RCM compliance mark<br>c UL us - Recognized (OL)                          |
| CE marking (see declaration of conformity)   | As per EU EMC directive   |
| UKCA marking (see declaration of conformity) | To UK instructions for EMC<br>To UK RoHS instructions                     |
| Degree of protection                         | IP65<br>NEMA 4  |
| Nominal width                                | 9 mm  |
| Width dimension                              | 27 mm   |
| Exhaust air function                         | With flow control option<br>Via throttle plate<br>Via individual sub-base |
| Sealing principle                            | Soft  |
| Mounting position                            | Any   |
| Conforms to standard                         | ISO 15407-1   |
| Manual override                              | Non-detenting   |
| Type of control                              | Pilot-controlled  |
| Pilot air supply port                        | Internal  |
| Flow direction                               | Non-reversible  |
| Symbol                                       | 00991082  |
| Lap  | Overlap   |
| Reverse polarity protection                  | for all electrical connections  |
| Additional functions                         | Holding current reduction<br>Safety shut-down                             |
| Signal status display                        | LED   |
| b-value                                      | 0.3   |
| C value                                      | 2.9 l/sbar  |

| Feature  | Value  |
|--|--|
| Flow rate of pneumatic valve   | 1400 l/min   |
| Flow rate of pneumatic valve on individual sub-base                    | 1100 l/min   |
| Optimized flow rate of pneumatic valve pneumatically concatenated flow | 1000 l/min   |
| Switching time off   | 52 ms  |
| On switching time  | 20 ms  |
| Duty cycle   | 100%   |
| Max. positive test pulse with 0 signal                                 | 400 µs   |
| Max. negative test pulse on 1 signal                                   | 100 µs   |
| Nominal pick-up current per solenoid coil                              | 110 mA to 20 ms  |
| Nominal current with current reduction                                 | 30 mA after 20 ms  |
| Coil characteristics   | 24 V DC: low-current phase 1.0 W, high-current phase 2.4 W                           |
| Permissible voltage fluctuations                                       | +/- 10 %   |
| Operating medium   | Compressed air as per ISO 8573-1:2010 [7:4:4]  |
| Information on operating and pilot media                               | Operation with oil lubrication possible (required for further use)                   |
| Vibration resistance   | Transport application test with severity level 2 as per FN 942017-4 and EN 60068-2-6 |
| Shock resistance   | Shock test with severity level 2 as per FN 942017-5 and EN 60068-2-27                |
| Corrosion resistance class (CRC)                                       | 2 - Moderate corrosion stress  |
| LABS (PWIS) conformity   | VDMA24364-B1/B2-L  |
| Temperature of medium  | -5 °C ... 50 °C  |
| Relative air humidity  | 0 - 90 %   |
| Protection against direct and indirect contact                         | PELV   |
| Pilot medium   | Compressed air as per ISO 8573-1:2010 [7:4:4]  |
| Ambient temperature  | -5 °C ... 50 °C  |
| Max. tightening torque for valve mounting                              | 1.8 Nm ... 2.2 Nm  |
| Product weight   | 270 g  |
| Electrical connection  | 3-pin<br>M12x1<br>Central plug<br>Round design                                       |
| Type of mounting   | On sub-base<br>With through-hole and screw   |
| Note on materials  | RoHS-compliant   |
| Seals material   | FPM<br>HNBR<br>NBR   |
| Housing material   | Die-cast aluminum  |