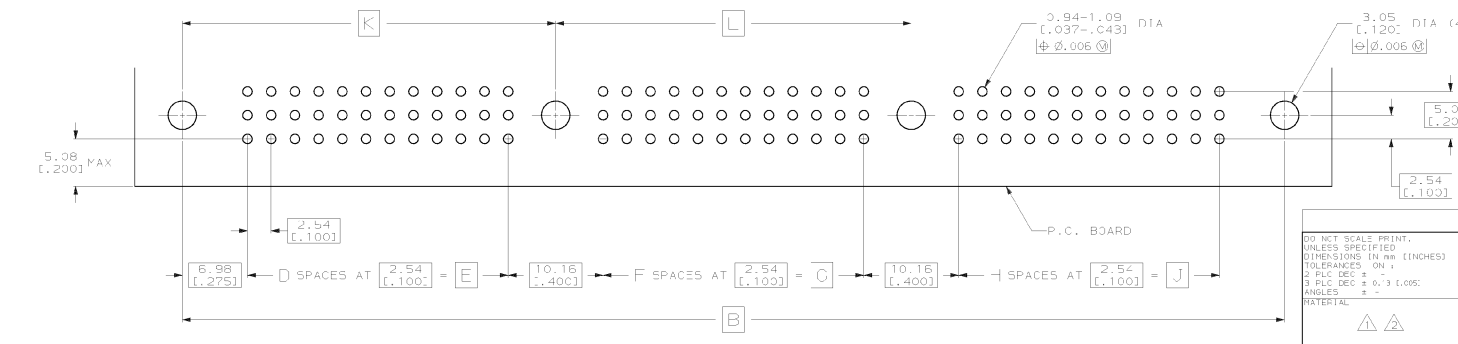
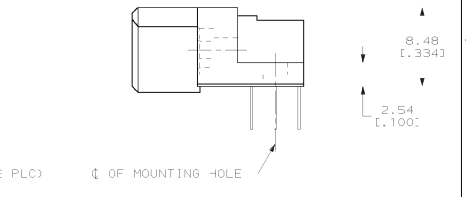
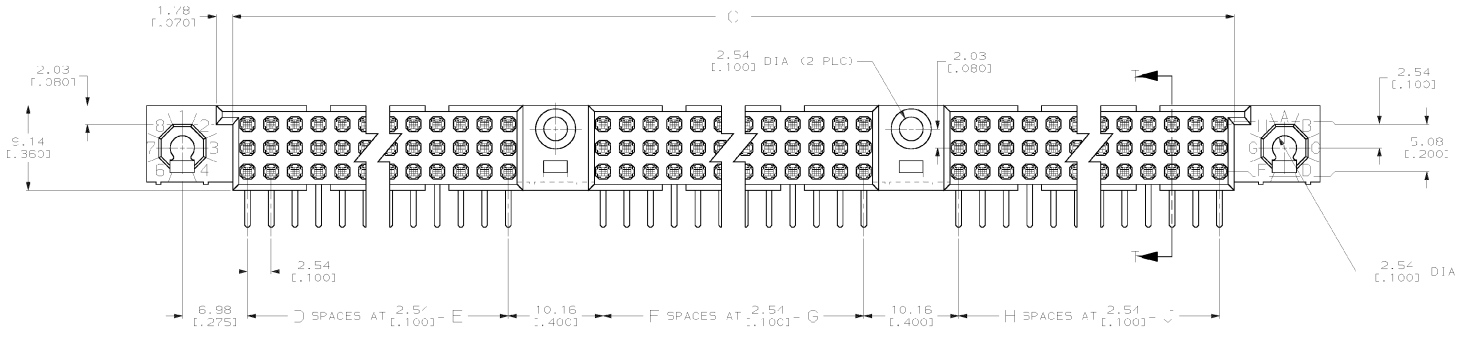
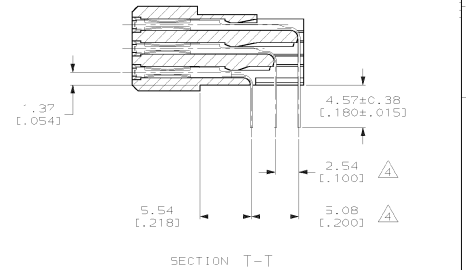
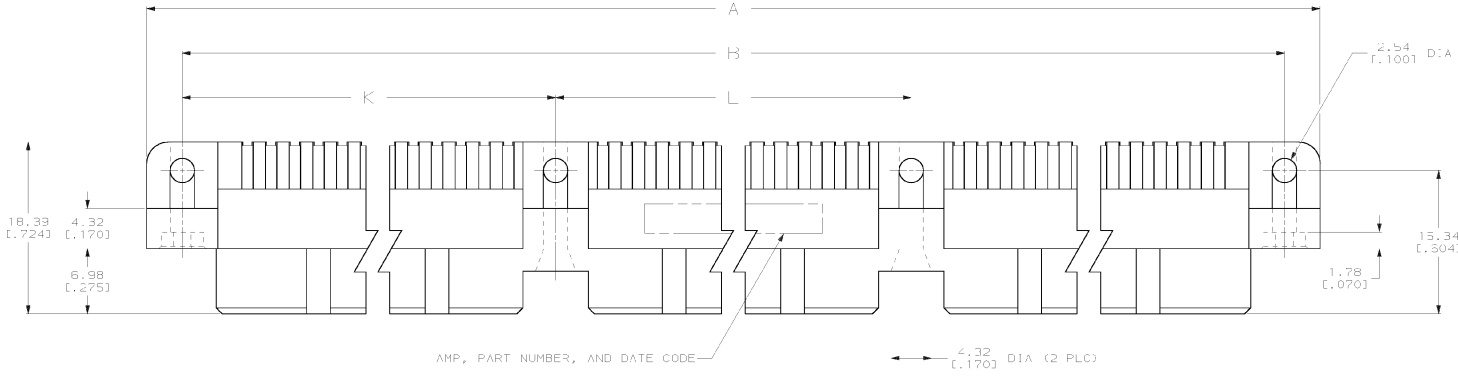


REV		DATE		DESCRIPTION		DATE	APPD
C	CCN AD421B					06/25/90	RMG
E	ECN. 0010 1069 93					11/11/99	UES
F	REV PER 0512-3091-03					21/03/03	MLM



FINISH		APPLICATOR SPEC		SIZE	CAGE CODE	DRAWING NO
A		-		D	00779	532838
-		-		SCALE: 4:1		SHEET 1 OF 2



CUSTOMER DRAWING

THIS DRAWING IS UNPUBLISHED. RELEASED FOR PUBLICATION .19
 © COPYRIGHT 19 BY AMP INCORPORATED. ALL INTERNATIONAL RIGHTS RESERVED.

REV	DATE	BY	CHK	APP	DESCRIPTION	DATE	APP
AD	25				SEE SHEET 1		

- △ HOUSING MATERIAL: THERMOPLASTIC, COLOR-NATURAL.
- △ CONTACT MATERIAL: COPPER ALLOY.
- △ CONTACT FINISH: .00127-.00254 [.000050-.000100] NICKEL UNDERPLATE ALL OVER; .00076 [.000030] GOLD PLATE IN CONTACT AREA, TIN-LEAD PLATED SOLDER TAILS.
- △ SOLDER TAILS MUST FIT HOLE PATTERN AS SHOWN ON THE RECOMMENDED P.C. BOARD LAYOUT.
- 5. DIMENSIONS IN BRACKETS ARE IN INCHES.
- △ PART NUMBER 15 OBSOLETE.

△																				532838-8
△																				532838-7
△																				532838-6
△																				532838-5
△																				532838-4
△																				532838-3
	12" .92 [4.800]	123.82 [4.875]	117.76 [4.400]	44	111.76 [4.400]	44	111.76 [4.400]	44	358.75 [14.124]	369.57 [14.550]	377.79 [14.850]	405								532838-2
	116.84 [4.600]	118.74 [4.675]	106.68 [4.200]	42	106.68 [4.200]	42	106.68 [4.200]	42	343.51 [13.524]	354.33 [13.950]	351.95 [14.250]	387								532838-1
	L	K	J	H	G	F	E	D	C	B	A	POSN	PART NUMBER							

METRIC

DO NOT SCALE PRINT. UNLESS SPECIFIED DIMENSIONS IN MM (INCHES) TOLERANCES ON ± 3 P.L.C. DEC ± 0.13 (.005) ANGLES ±	DR 06/26/90 P.A. SEIFFERD CHK 11/1/93 G.E. SKIPPER APP'D 11/1/93 G.E. SKIPPER AP'D 11/1/93 G.E. SKIPPER PRODUCT SPEC	AMP Incorporated Harrisburg, PA 17105-3506
MATERIAL △ △	FINISH △	NAME HD: 3 ROW RECEPTACLE ASSEMBLY, 2 GJDC P-IN, 4 MOUNTING HOLES, 4.57 [.180] LONG SOLDER TAILS, .00076 [.00030] GOLD PLATE
APPLICATION SPEC -	SIZE D 00779	DRAWING NO 532838
HEIGHT -	SCALE 4:1	SHEET 2 OF 2