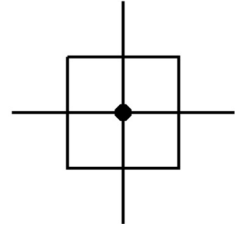
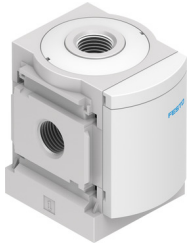


Branching module MS6-FRM-1/2

Part number: 529853

FESTO



Data sheet

Feature	Value
Mounting position	Any
Structural design	Branching module
Symbol	00991510
Operating pressure	0 bar ... 20 bar
Standard nominal flow rate in main flow direction 1 -> 2	14700 l/min
Standard nominal flow rate outlet at top	4400 l/min
Standard nominal flow rate outlet down	4600 l/min
Operating voltage range AC	0 V ... 250 V
DC operating voltage range	0 V ... 125 V
Operating medium	Compressed air as per ISO 8573-1:2010 [7:4:4] Inert gas
Information on operating and pilot media	Operation with oil lubrication possible (required for further use)
Corrosion resistance class (CRC)	2 - Moderate corrosion stress
LABS (PWIS) conformity	VDMA24364-B1/B2-L
Storage temperature	-10 °C ... 60 °C
For use in the food industry	See supplementary material information
Temperature of medium	-10 °C ... 60 °C
Ambient temperature	-10 °C ... 60 °C
Product weight	458 g
Pneumatic connection 1	G1/2
Pneumatic connection 2	G1/2
Pneumatic connection 3	G1/2
Pneumatic connection 4	G1/2
Note on materials	RoHS-compliant
Housing material	Die-cast aluminum